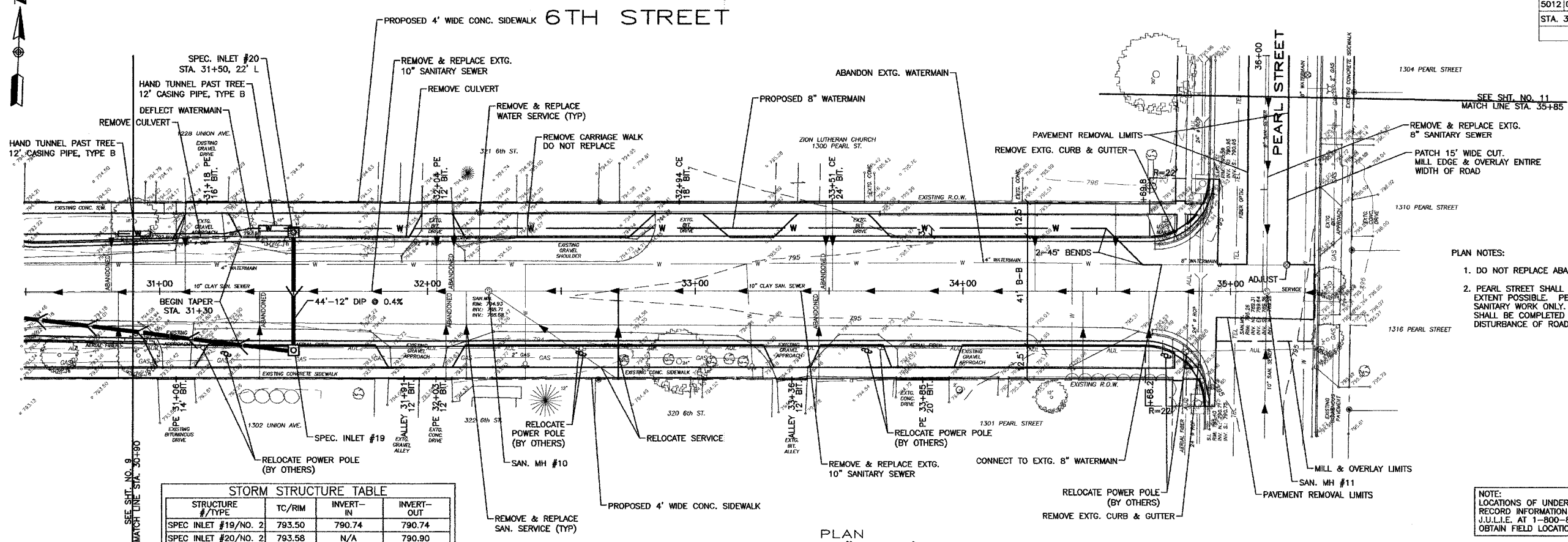


F.A. RTE.	SECTION	COUNTY	TOTAL SHEETS	SHEET NO.
5012	02-00098-00-FP	BOONE	30	10
STA. 30+90 TO STA. 35+85				
ILLINOIS FED. AID PROJECT				

PLAN	DATE
BY	DATE
CHECKED	DATE
NO. _____	NO. _____

PROFILE	DATE
BY	DATE
CHECKED	DATE
NO. _____	NO. _____



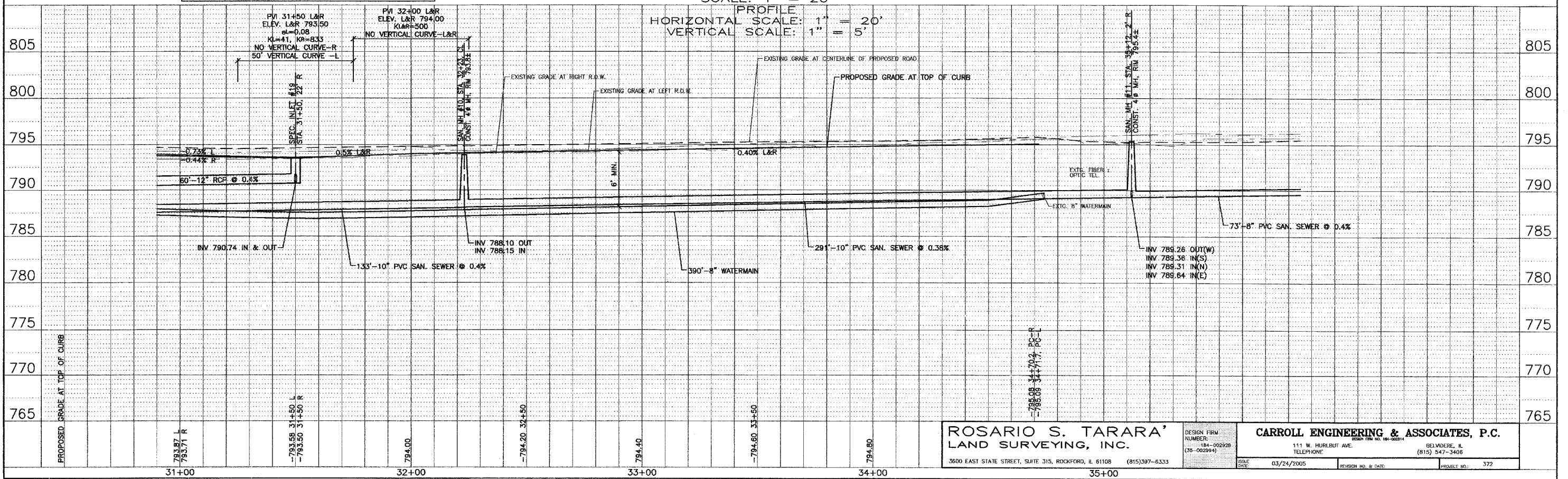
STORM STRUCTURE TABLE

STRUCTURE #/TYPE	TC/RIM	INVERT-IN	INVERT-OUT
SPEC INLET #19/NO. 2	793.50	790.74	790.74
SPEC INLET #20/NO. 2	793.58	N/A	790.90

- PLAN NOTES:
- DO NOT REPLACE ABANDONED SANITARY SERVICES.
  - PEARL STREET SHALL REMAIN OPEN TO TRAFFIC TO MAXIMUM EXTENT POSSIBLE. PEARL STREET MAY BE CLOSED DURING SANITARY WORK ONLY. FINAL RESTORATION OF PEARL STREET SHALL BE COMPLETED WITHIN 14 CALENDAR DAYS OF FIRST DISTURBANCE OF ROADWAY, INCLUDING NEW CURBS.

NOTE: LOCATIONS OF UNDERGROUND UTILITIES ARE TAKEN FROM RECORD INFORMATION AND ARE APPROXIMATE. CALL J.U.L.I.E. AT 1-800-892-0123, BEFORE DIGGING, TO OBTAIN FIELD LOCATIONS.

PLAN SCALE: 1" = 20'  
 PROFILE SCALE: 1" = 20'  
 HORIZONTAL SCALE: 1" = 20'  
 VERTICAL SCALE: 1" = 5'



**ROSARIO S. TARARA**  
 LAND SURVEYING, INC.  
 3600 EAST STATE STREET, SUITE 315, ROCKFORD, IL 61108 (815)397-6333

DESIGN FIRM NUMBER: 184-002928 (35-002994)

**CARROLL ENGINEERING & ASSOCIATES, P.C.**  
 111 W. HURLBUT AVE. BELLEVILLE, IL (815) 547-3406

ISSUE DATE: 03/24/2005 REVISION NO. & DATE: PROJECT NO.: 372