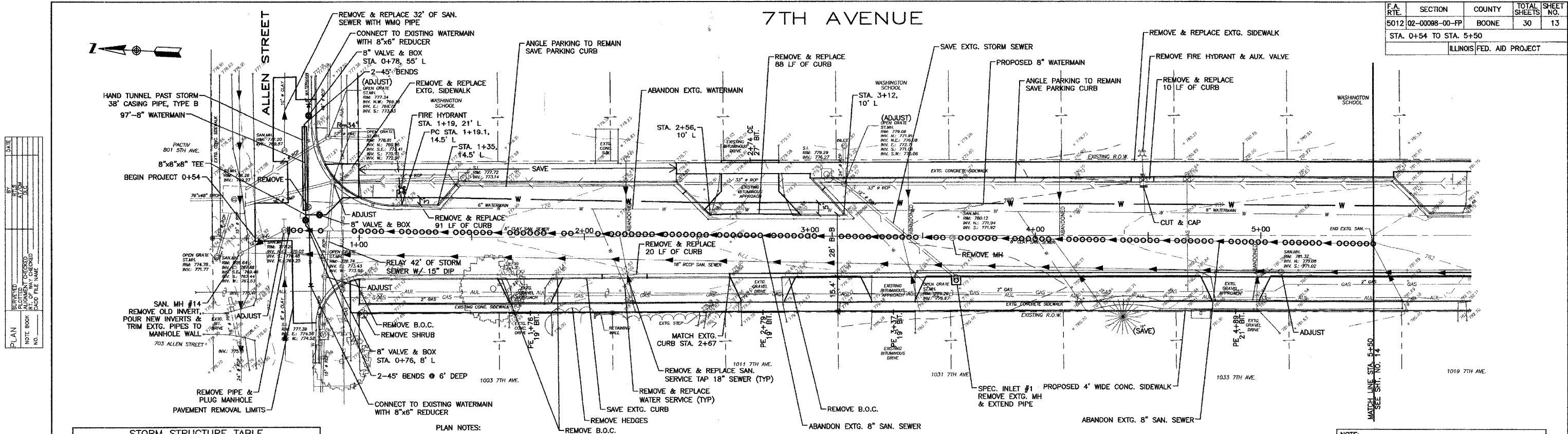


F.A. RTE.	SECTION	COUNTY	TOTAL SHEETS	SHEET NO.
5012	02-00098-00-FP	BOONE	30	13
STA. 0+54 TO STA. 5+50				
ILLINOIS FED. AID PROJECT				



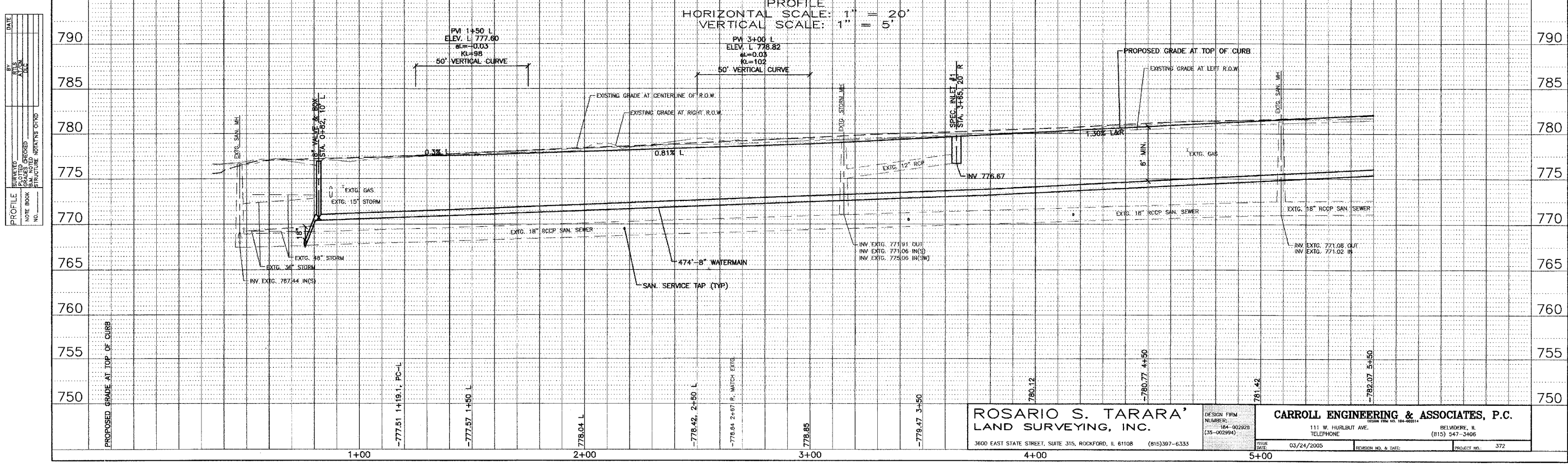
STORM STRUCTURE TABLE

STRUCTURE #/TYPE	TC/RIM	INVERT-IN	INVERT-OUT
SPEC INLET #1/NO. 2	779.66	N/A	776.67

- PLAN NOTES:**
- DO NOT REPLACE ABANDONED SANITARY SERVICES.
 - ALL WORK IN ALLEN STREET AND 7TH AVENUE BETWEEN STA. 0+54 AND 8+00 TO BE COMPLETED BETWEEN JUNE 1, 2005 AND AUGUST 20, 2005. FAILURE TO MEET THIS SCHEDULE SHALL CAUSE LIQ DAMAGES CLAUSE TO BE IMPLEMENTED.

NOTE:
LOCATIONS OF UNDERGROUND UTILITIES ARE TAKEN FROM RECORD INFORMATION AND ARE APPROXIMATE. CALL J.U.L.L.I.E. AT 1-800-892-0123, BEFORE DIGGING, TO OBTAIN FIELD LOCATIONS.

PLAN SCALE: 1" = 20'
 PROFILE SCALE: 1" = 20'
 HORIZONTAL SCALE: 1" = 20'
 VERTICAL SCALE: 1" = 5'



ROSARIO S. TARARA LAND SURVEYING, INC. 3600 EAST STATE STREET, SUITE 315, ROCKFORD, IL 61108 (815)397-6333	DESIGN FIRM NUMBER: 184-002928 (35-002994) ISSUE DATE: 03/24/2005 REVISION NO. & DATE:	CARROLL ENGINEERING & ASSOCIATES, P.C. 111 W. HURLBURT AVE. BELVIDERE, IL (815) 547-3406 DESIGN FIRM NO. 184-00014