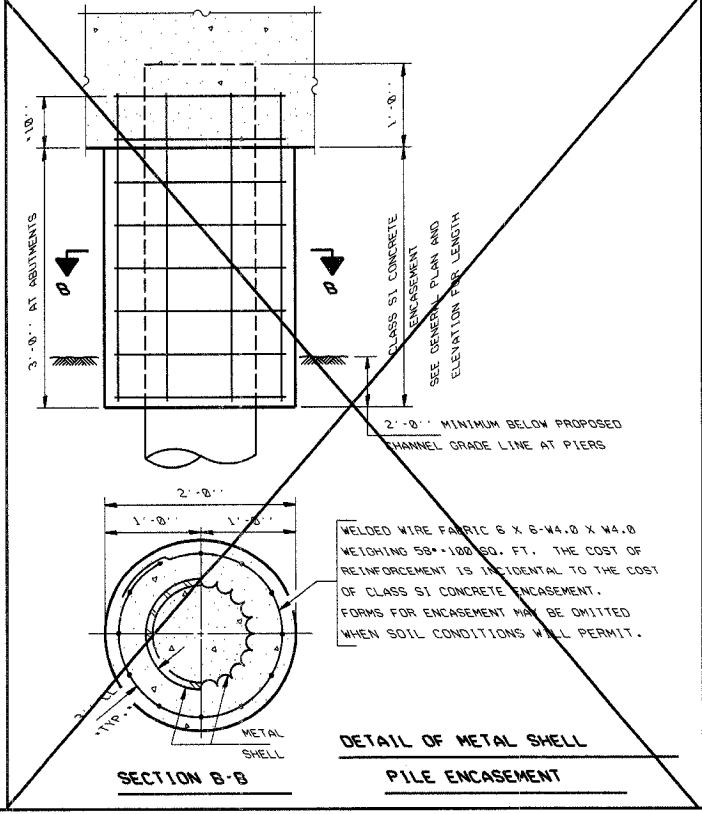
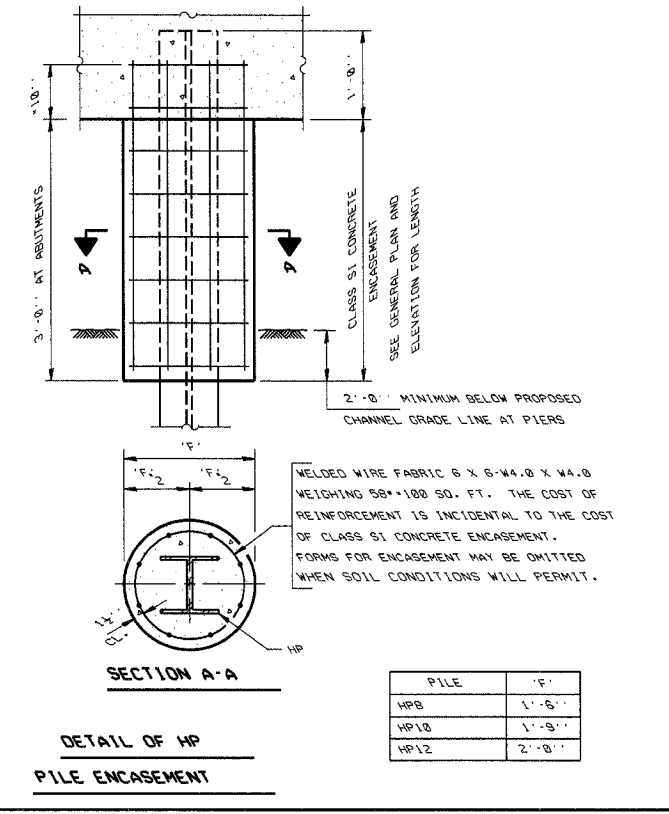
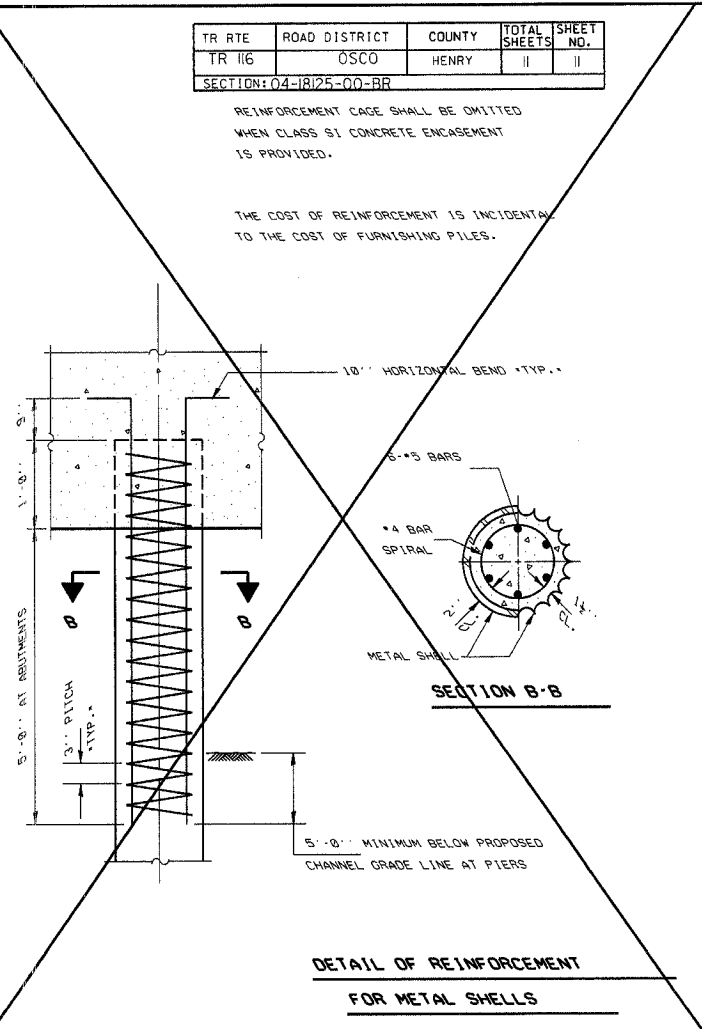
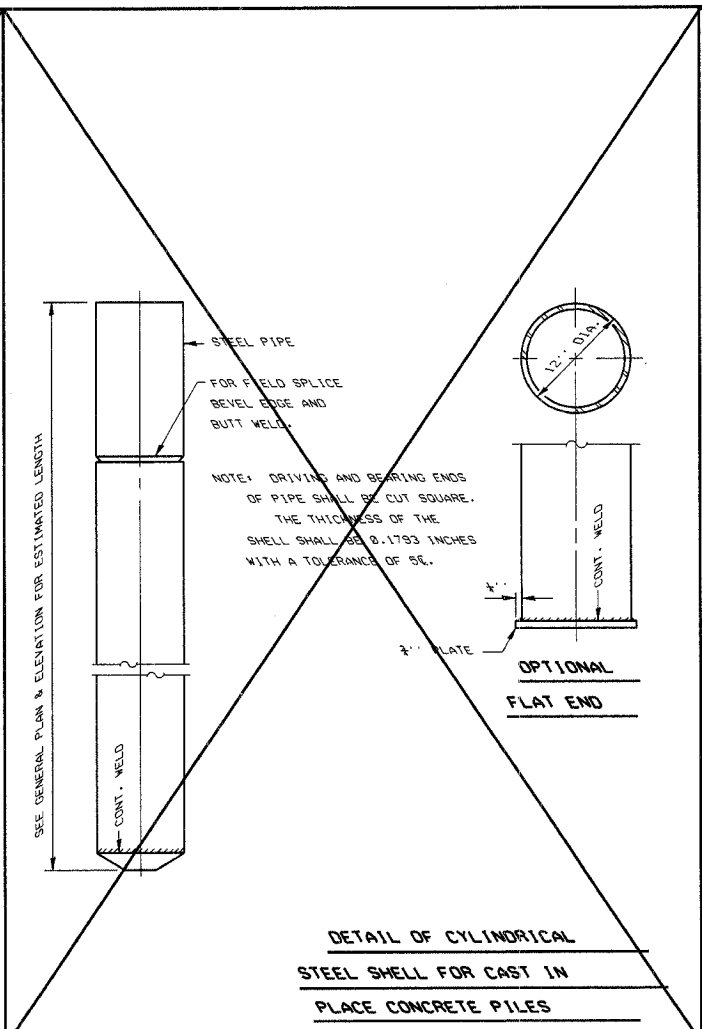
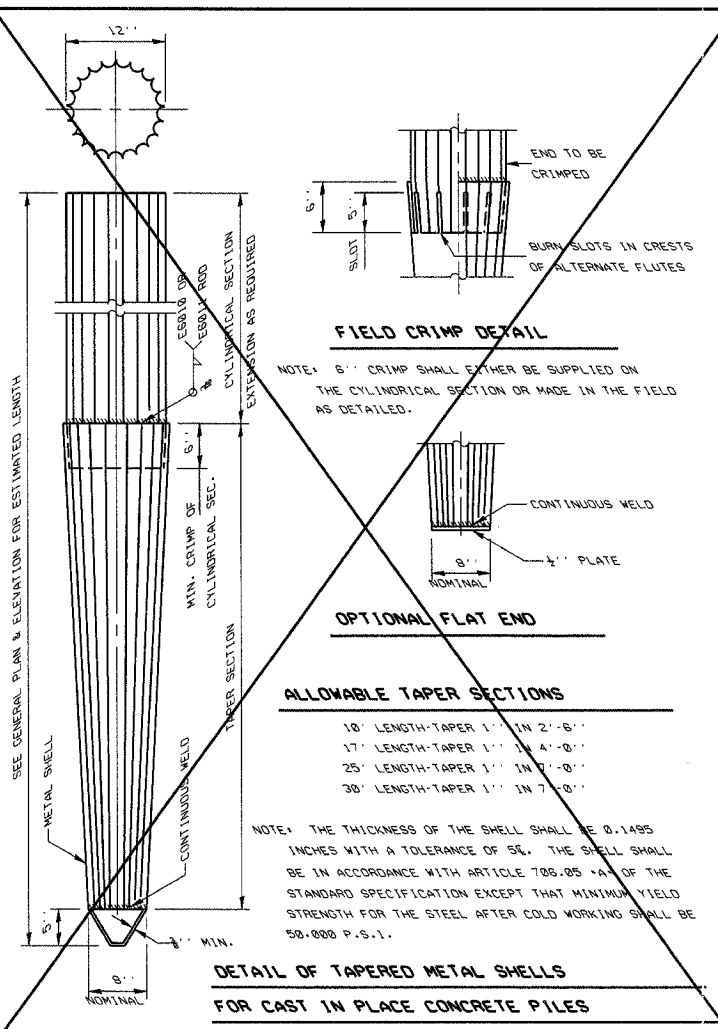
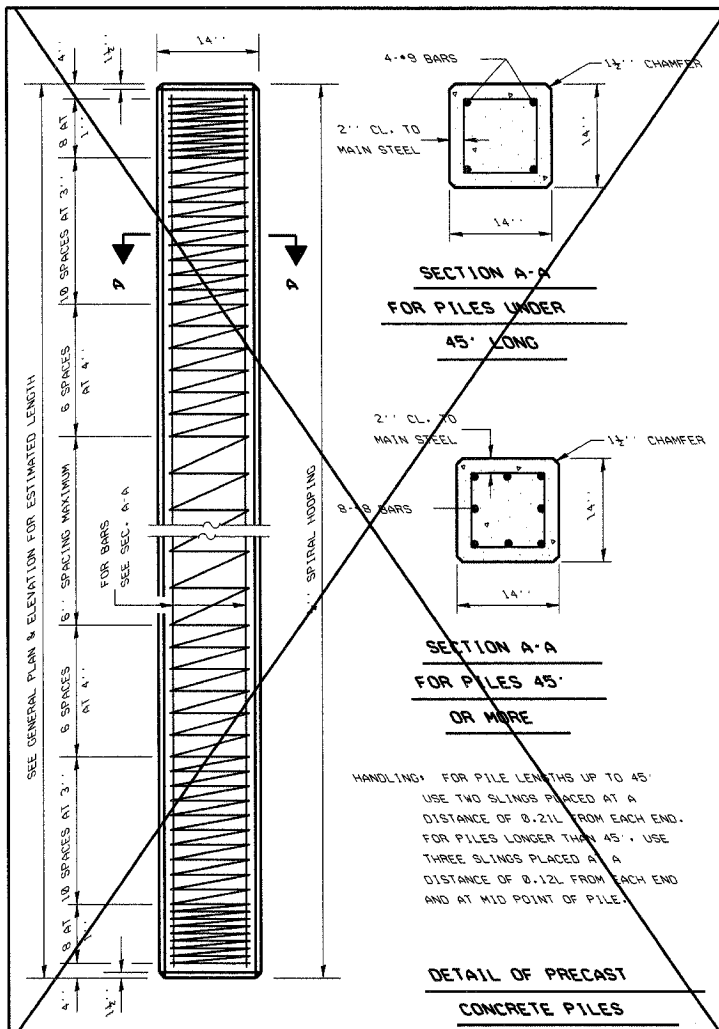


TR RTE	ROAD DISTRICT	COUNTY	TOTAL SHEETS	SHEET NO.
TR 116	OSCO	HENRY	11	11
SECTION: 04-18125-00-BB				

REINFORCEMENT CAGE SHALL BE OMITTED WHEN CLASS S1 CONCRETE ENCASEMENT IS PROVIDED.

THE COST OF REINFORCEMENT IS INCIDENTAL TO THE COST OF FURNISHING PILES.



QUANTITIES-LIN. FT. OF ENCASEMENT

STEEL PILES

PILE SIZE	ITEM	QUANTITY
HP8	CLASS S1 CONCRETE ENCASEMENT	0.863 C.Y.
HP10	CLASS S1 CONCRETE ENCASEMENT	0.886 C.Y.
HP12	CLASS S1 CONCRETE ENCASEMENT	0.112 C.Y.

METAL SHELL PILES

PILE SIZE	ITEM	QUANTITY
12" DIA.	CLASS S1 CONCRETE ENCASEMENT	0.887 C.Y.

Illinois Department of Transportation

PASSED November 1, 1995

Ray D. Kasper
Engineer of Bridge Design

APPROVED November 1, 1995

Ralph E. Anderson
Engineer of Bridges and Structures

ISSUED 18-11-81

PILE DETAILS
STANDARD CX-1