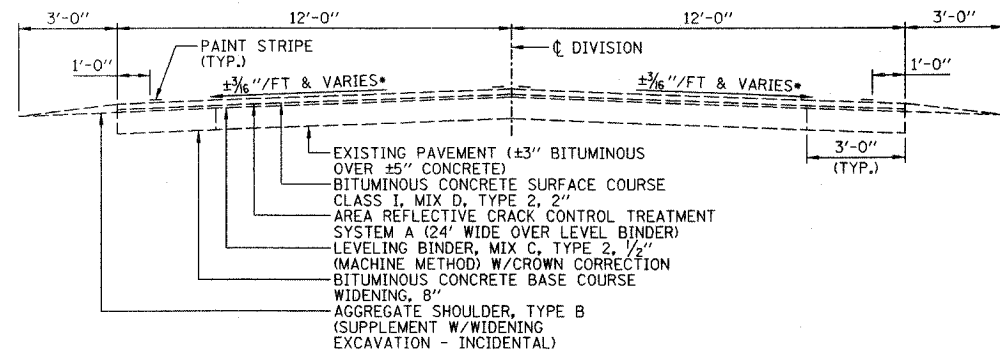


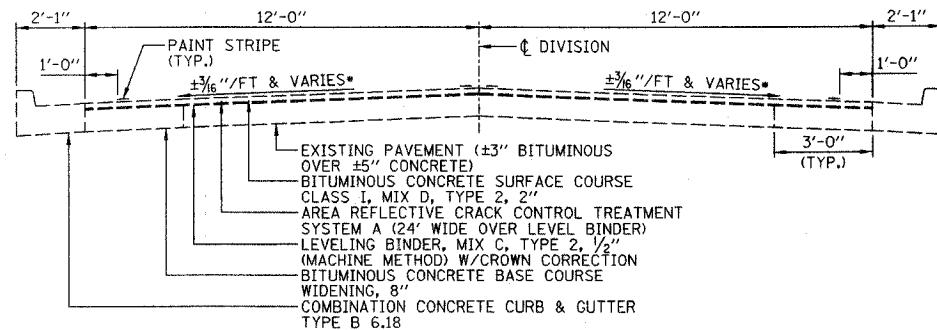
F.A.U. RTE.	SECTION	COUNTY	TOTAL SHEETS	SHEET NO.
6325	02-00090-00-BR	LIVINGSTON	31	4
STA.		TO STA.		
FED. ROAD DIST. NO. 7		ILLINOIS	FED. AID PROJECT	
CONTRACT NO. 87238				



**EXISTING TYPICAL SECTION
(SOUTH OF BRIDGE)**

FROM STA. 22+51 LT/RT TO STA. 27+73.33 LT/RT
& STA. 28+06 LT/RT TO STA. 28+14 LT/RT

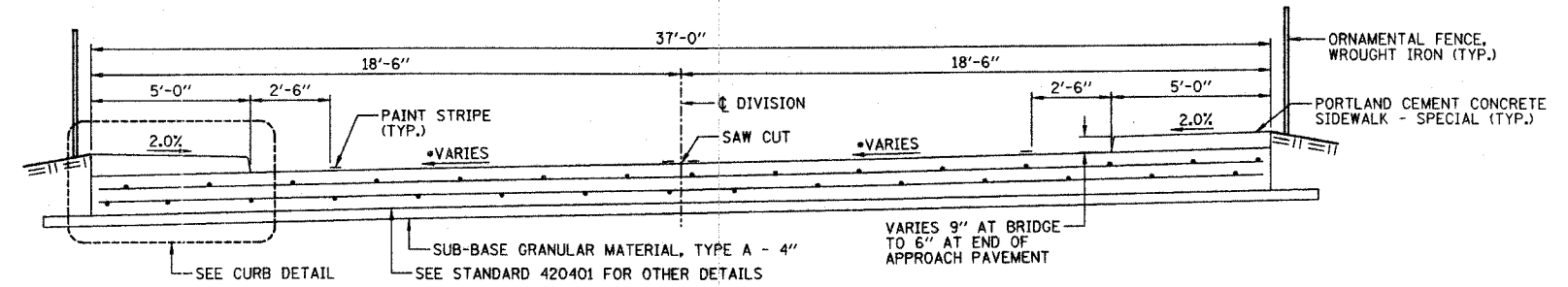
• PAVEMENT CROSS SLOPE VARIES THRU HORIZONTAL CURVE
(SEE CURVE DATA ON THE PLAN & PROFILE FOR SUPERELEVATION)



**EXISTING TYPICAL SECTION
(NORTH OF BRIDGE)**

FROM STA. 28+14 LT TO STA. 34+60 LT
& STA. 28+14 RT TO STA. 32+88 RT

• PAVEMENT CROSS SLOPE VARIES THRU HORIZONTAL CURVE
(SEE CURVE DATA ON THE PLAN & PROFILE FOR SUPERELEVATION)

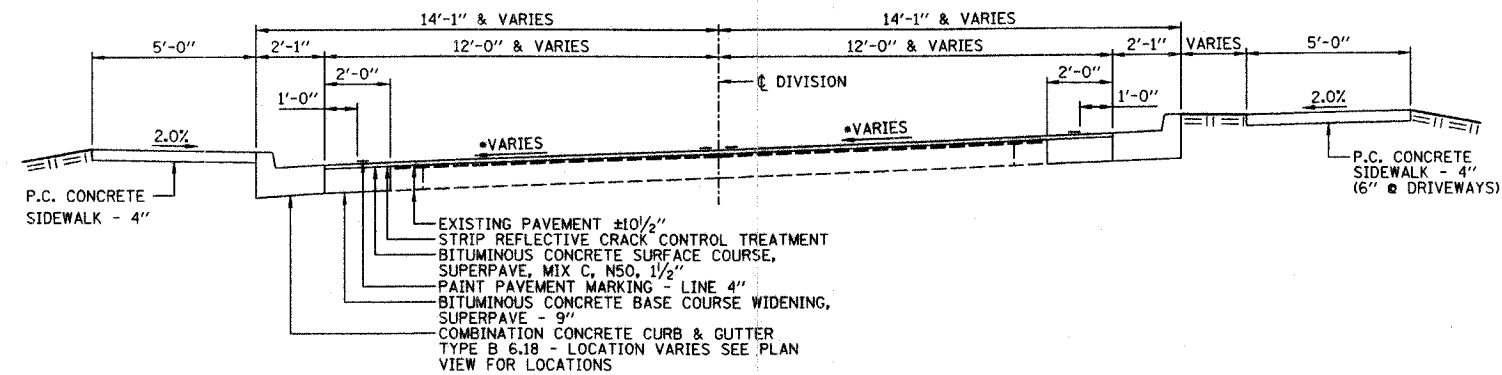


**PROPOSED TYPICAL SECTION
BRIDGE APPROACH PAVEMENT**

FROM STA. 27+43 TO STA. 27+73
& STA. 28+07 TO STA. 28+37

NOTE: BRIDGE FROM STA. 27+73 TO STA. 28+07

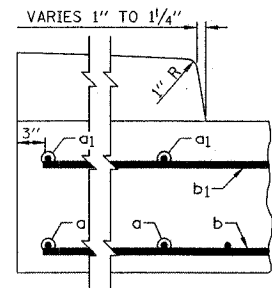
• PAVEMENT CROSS SLOPE VARIES THRU HORIZONTAL CURVE
(SEE CURVE DATA ON THE PLAN & PROFILE FOR SUPERELEVATION)



**PROPOSED TYPICAL SECTION
(SOUTH OF BRIDGE)**

FROM STA. 25+57 TO STA. 27+43

• PAVEMENT CROSS SLOPE VARIES THRU HORIZONTAL CURVE
(SEE PLAN VIEW FOR SUPERELEVATION DATA)



**BRIDGE APPROACH PAVEMENT
CURB DETAIL**

	SUPERPAVE SURFACE	SUPERPAVE BASE COURSE
PG GRADE	PG64-22	PG64-22
MAX % RAP ALLOWABLE*	0%	25%
DESIGN AIR VOIDS	4.0% @ N50	4.0% @ N50
MIXTURE COMPOSITION	IL 12.5 OR IL 9.5	IL 19.0
FRICTION AGGREGATE	MIXTURE C	

* IF RAP OPTION IS SELECTED, THE ASPHALT CEMENT GRADE MAY NEED TO BE ADJUSTED. THIS WILL BE DETERMINED BY THE ENGINEER.

ASSUMED BITUMINOUS WEIGHT = 112 LB/SQ YD-IN

**TOP OF BRIDGE APPROACH
PAVEMENT ELEVATION TABLE**

STATION	APPROACH PAVEMENT	ELEVATION 13.5' LT	ELEVATION P.G.L.	ELEVATION 13.5' RT
27+43.00	SOUTH	641.94	642.25	642.55
27+53.00	SOUTH	641.97	642.23	642.49
27+63.00	SOUTH	642.01	642.22	642.43
27+73.00	SOUTH	642.00	642.20	642.37
28+07.00	NORTH	641.95	642.16	642.15
28+17.00	NORTH	641.94	642.14	642.09
28+27.00	NORTH	641.93	642.13	642.02
28+37.00	NORTH	641.91	642.11	641.96

SECTION 02-00090-00-BR
LIVINGSTON COUNTY
PONTIAC, ILLINOIS

TYPICAL SECTIONS

DRAWN BY DMM	Farnsworth GROUP 2700 Meadow Drive Bloomington, Illinois 61704 309.908-8488 309.908-8771 fax	FILE NO. 24-6884
DATE 01/14/05		BOOK NO. 2233
CHECKED BY MSW		SHEET NO. 4 OF 31