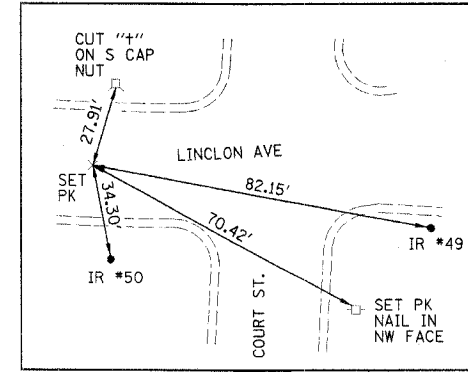
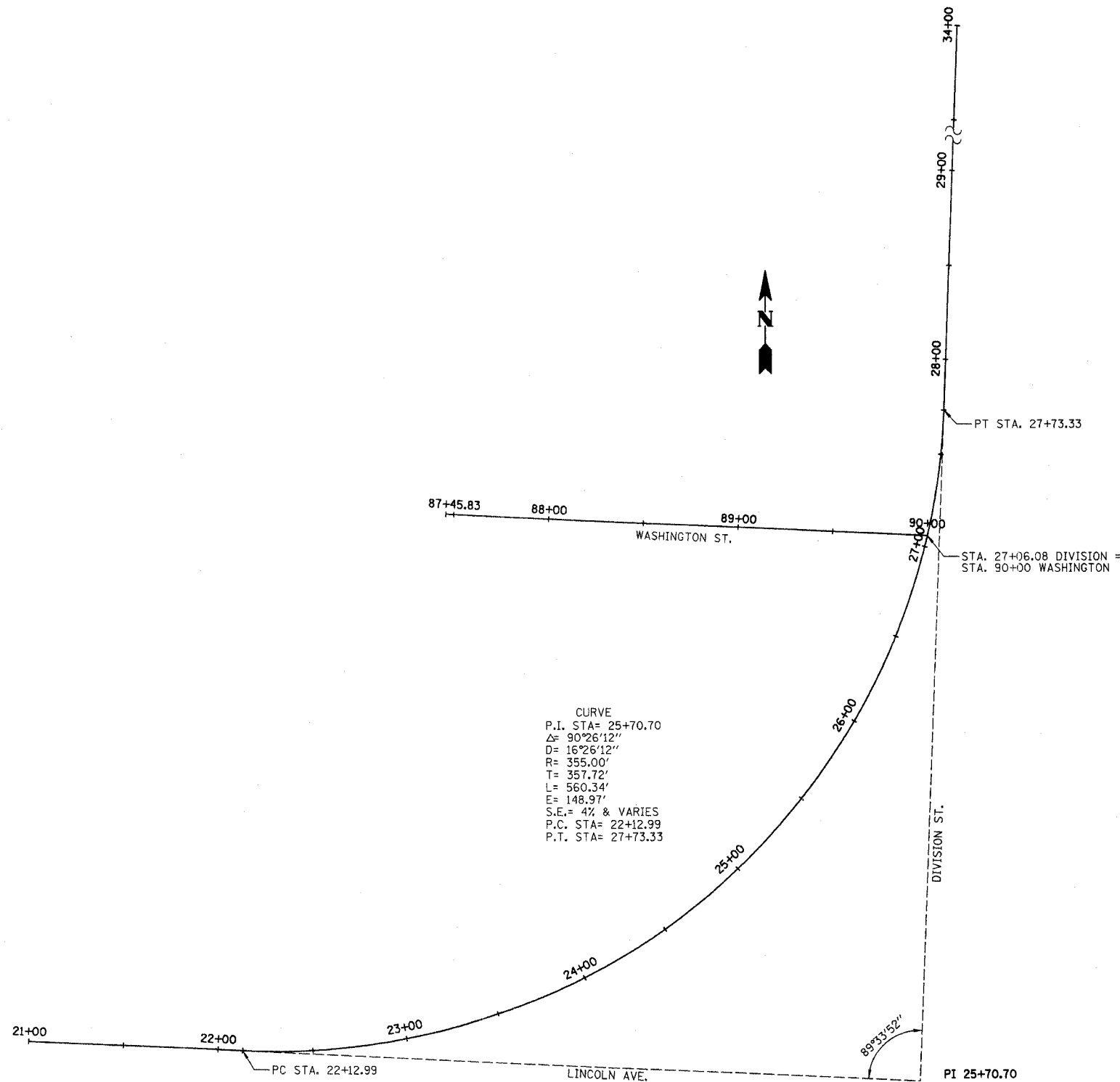
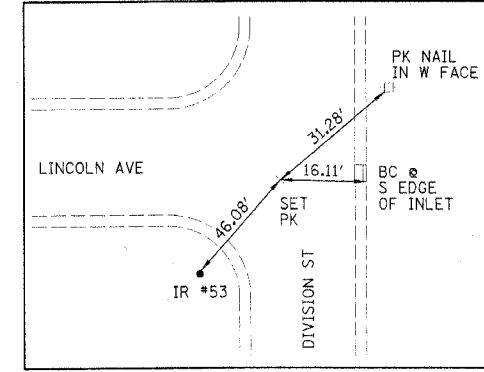


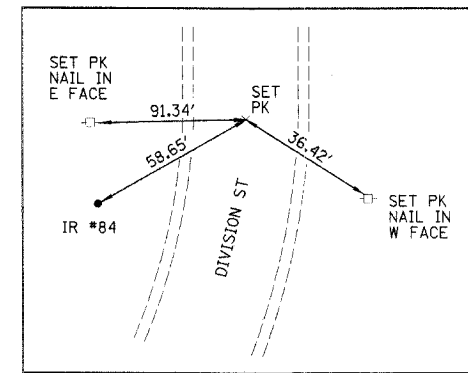
F.A.U. RTE.	SECTION	COUNTY	TOTAL SHEETS	SHEET NO.
6325	02-00090-00-BR	LIVINGSTON	31	5
STA.		TO STA.		
FED. ROAD DIST. NO. 7		ILLINOIS FED. AID PROJECT*		
CONTRACT NO. 87238				



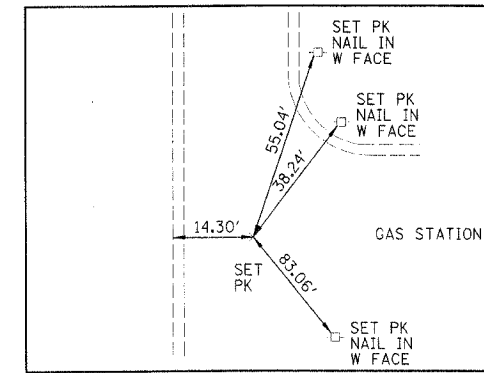
TIES TO PC
STA 22+12.99



TIES TO PI
STA 25+70.70



TIES TO PT
STA 27+73.33



TIES TO
STA 34+00.00

SECTION 02-00090-00-BR LIVINGSTON COUNTY PONTIAC, ILLINOIS			
TRANSIT LINE AND TIES			
DRAWN BY DMM	 2708 McHenry Drive Bloomington, Illinois 61704 309/908-9496 309/908-9871 fax	FILE NO. 24-6884	
DATE 01/14/05		BOOK NO. 2233	
CHECKED BY MSW		SHEET NO. 5 OF 31	