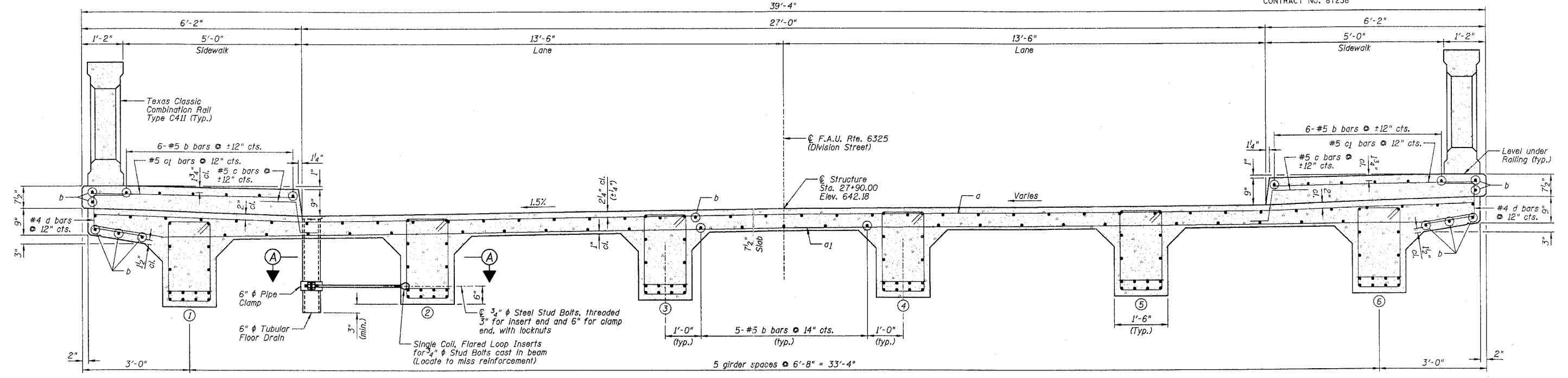
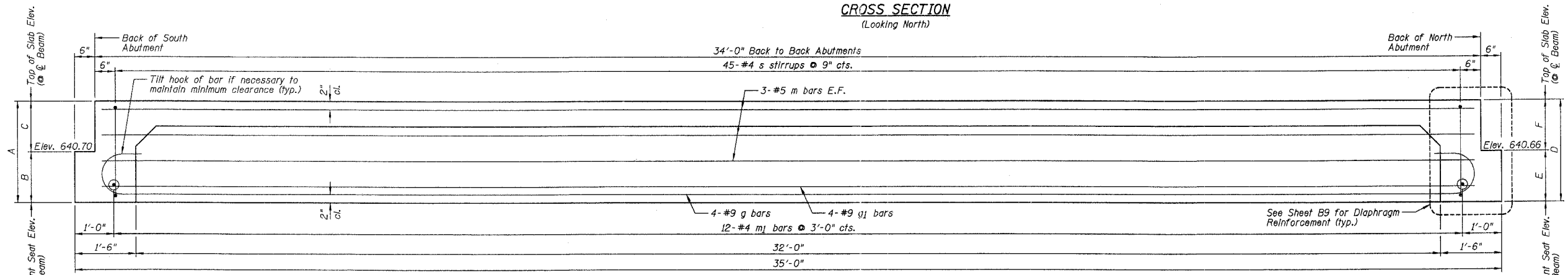


F.A.U. RTE.	SECTION	COUNTY	TOTAL SHEETS	SHEET NO.	SHEET NO. B8 OF 18 SHEETS
6325	02-00090-00-BR	LIVINGSTON	31	15	
STA.	TO STA.				
FED. ROAD DIST. NO. 7	ILLINOIS FED. AID PROJECT*		CONTRACT NO. 87238		



**CROSS SECTION**  
(Looking North)



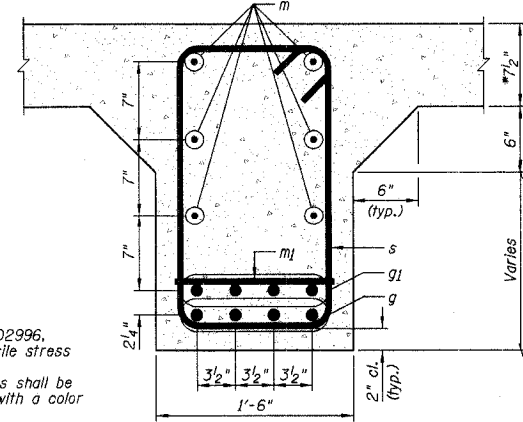
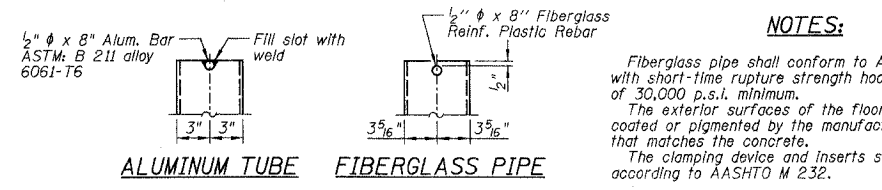
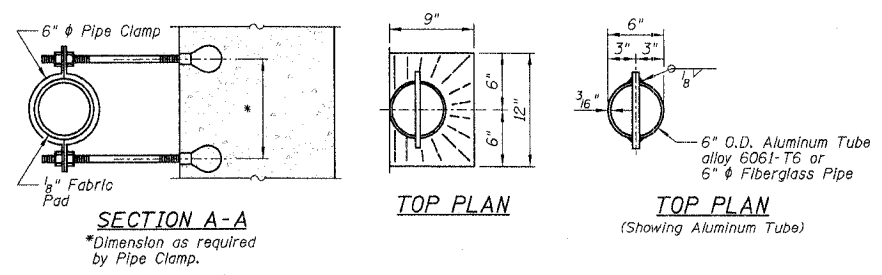
**GIRDER ELEVATION**

**SUPERSTRUCTURE  
BILL OF MATERIALS**

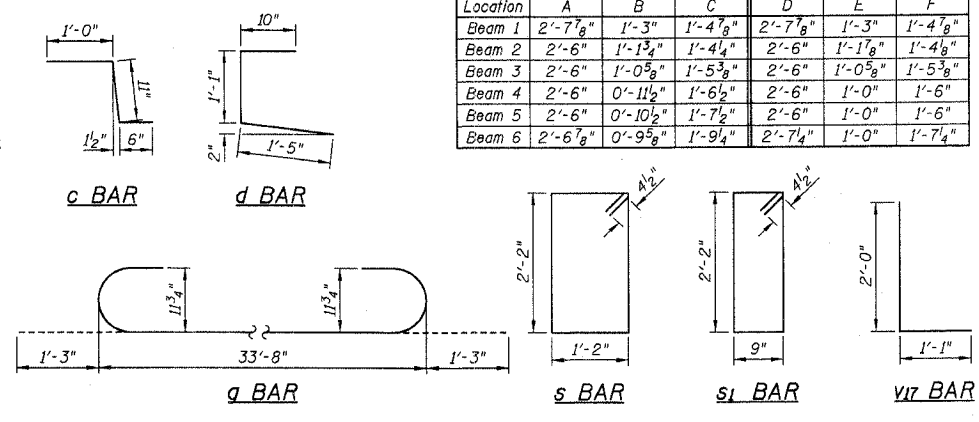
Bar	No.	Size	Length	Shape
a	46	#5	38'-8"	—
a1	41	#5	38'-8"	—
b	86	#5	33'-8"	—
c	68	#5	2'-5"	┌
c1	68	#5	5'-8"	┌
d	68	#4	3'-4"	┌
g	24	#9	36'-2"	┌
g1	24	#9	33'-8"	┌
m	36	#5	33'-8"	—
m1	72	#4	1'-2"	—
m2	14	#5	40'-8"	—
s	270	#4	7'-5"	┌
sl	76	#4	6'-7"	┌
v7	82	#5	3'-1"	┌

**END OF BEAM DIMENSION TABLE**

Location	A	B	C	D	E	F
Beam 1	2'-7 <sup>7</sup> / <sub>8</sub> "	1'-3"	1'-4 <sup>1</sup> / <sub>8</sub> "	2'-7 <sup>7</sup> / <sub>8</sub> "	1'-3"	1'-4 <sup>1</sup> / <sub>8</sub> "
Beam 2	2'-6"	1'-1 <sup>3</sup> / <sub>4</sub> "	1'-4 <sup>1</sup> / <sub>4</sub> "	2'-6"	1'-1 <sup>7</sup> / <sub>8</sub> "	1'-4 <sup>1</sup> / <sub>8</sub> "
Beam 3	2'-6"	1'-0 <sup>5</sup> / <sub>8</sub> "	1'-5 <sup>3</sup> / <sub>8</sub> "	2'-6"	1'-0 <sup>5</sup> / <sub>8</sub> "	1'-5 <sup>3</sup> / <sub>8</sub> "
Beam 4	2'-6"	0'-11 <sup>1</sup> / <sub>2</sub> "	1'-6 <sup>1</sup> / <sub>2</sub> "	2'-6"	1'-0"	1'-6"
Beam 5	2'-6"	0'-10 <sup>1</sup> / <sub>2</sub> "	1'-7 <sup>1</sup> / <sub>2</sub> "	2'-6"	1'-0"	1'-6"
Beam 6	2'-6"	0'-9 <sup>3</sup> / <sub>8</sub> "	1'-9 <sup>1</sup> / <sub>4</sub> "	2'-7 <sup>1</sup> / <sub>4</sub> "	1'-0"	1'-7 <sup>1</sup> / <sub>4</sub> "



**TYPICAL GIRDER DETAIL**  
\*Greater than 7<sup>1</sup>/<sub>2</sub>" @ Beam #1 & #6.



**NOTE:**  
Work this sheet with Sheets B5-B7, B9 & B10.

**SECTION 02-00090-00-BR  
LIVINGSTON COUNTY  
PONTIAC, ILLINOIS  
SUPERSTRUCTURE CROSS SECTION,  
GIRDER ELEVATION & TYPICAL  
DETAIL AND FLOOR DRAIN DETAILS**

DESIGNED BY J.M.L.	<b>Farnsworth GROUP</b> 2706 McGraw Drive Bloomington, Illinois 61704 309/898-8636, 309/898-1871 fax	FILE NO. 24-6884
DRAWN BY D.J.M.		DATE 01-14-05
CHECKED BY M.S.W.		SHEET NO. 15 of 31