

INDEX OF SHEETS

Sheet No.	Description
1	COVER SHEET
2	TYPICAL CROSS SECTION AND DETAILS
3	DETAILS & SCHEDULES

STANDARDS

701301-02	TRAFFIC CONTROL
701306-01	TRAFFIC CONTROL
702001-05	TRAFFIC CONTROL

SUMMARY OF QUANTITIES

CODE NO.	DESCRIPTION	QUANTITY	UNIT
* X4066518	POLYMERIZED BITUMINOUS CONCRETE SURFACE COURSE, SUPERPAVE, MIX "C", N90	2672	TON
X4066775	LEVELING BINDER (MACHINE METHOD), SUPERPAVE N90	2635	TON
* 20200100	EARTH EXCAVATION	20	CU YD
* 35100100	AGGREGATE BASE COURSE, TYPE A	41	TON
* 40600100	BITUMINOUS MATERIALS (PRIME COAT)	6315	GALLON
40600300	AGGREGATE (PRIME COAT)	128	TON
40600980	BITUMINOUS SURFACE REMOVAL - BUTT JOINT	262	SQ YD
40600990	TEMPORARY RAMP	35	SQ YD
40800040	INCIDENTAL BITUMINOUS SURFACING	80	TON
44300100	AREA REFLECTIVE CRACK CONTROL TREATMENT	8800	SQ YD
44300200	STRIP REFLECTIVE CRACK CONTROL TREATMENT	9131	FOOT
* 48101200	AGGREGATE SHOULDERS, TYPE B	1787	TON
* 70100460	TRAFFIC CONTROL AND PROTECTION, STANDARD 701306	1	L SUM
* 70300100	SHORT-TERM PAVEMENT MARKING	2558	FOOT

Construction Code 1000  
\* Special Provisions

CONSTRUCTION ENDS  
STA. 214+61  
(NORTH E.O.P. IL RT 115)

CONTRACT NO. 87307

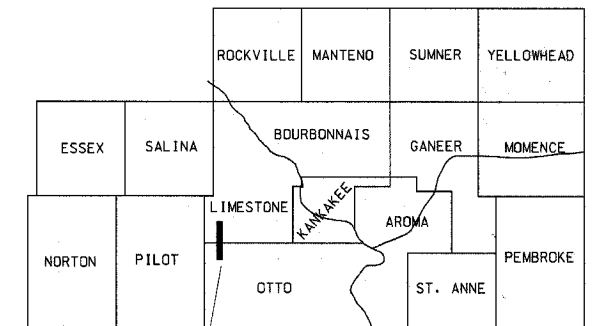
J.U.L.I.E. 1-800-892-0123

STATE OF ILLINOIS  
DEPARTMENT OF TRANSPORTATION  
COUNTY OF KANKAKEE  
DEPARTMENT OF HIGHWAYS  
PLANS FOR PROPOSED  
FEDERAL AID SECONDARY PROJECT  
SECTION 02-00072-06-RS  
F.A.S. 316 (C.H.28) PROJECT RS-316 (108)  
JOB NO. C-93-046-05

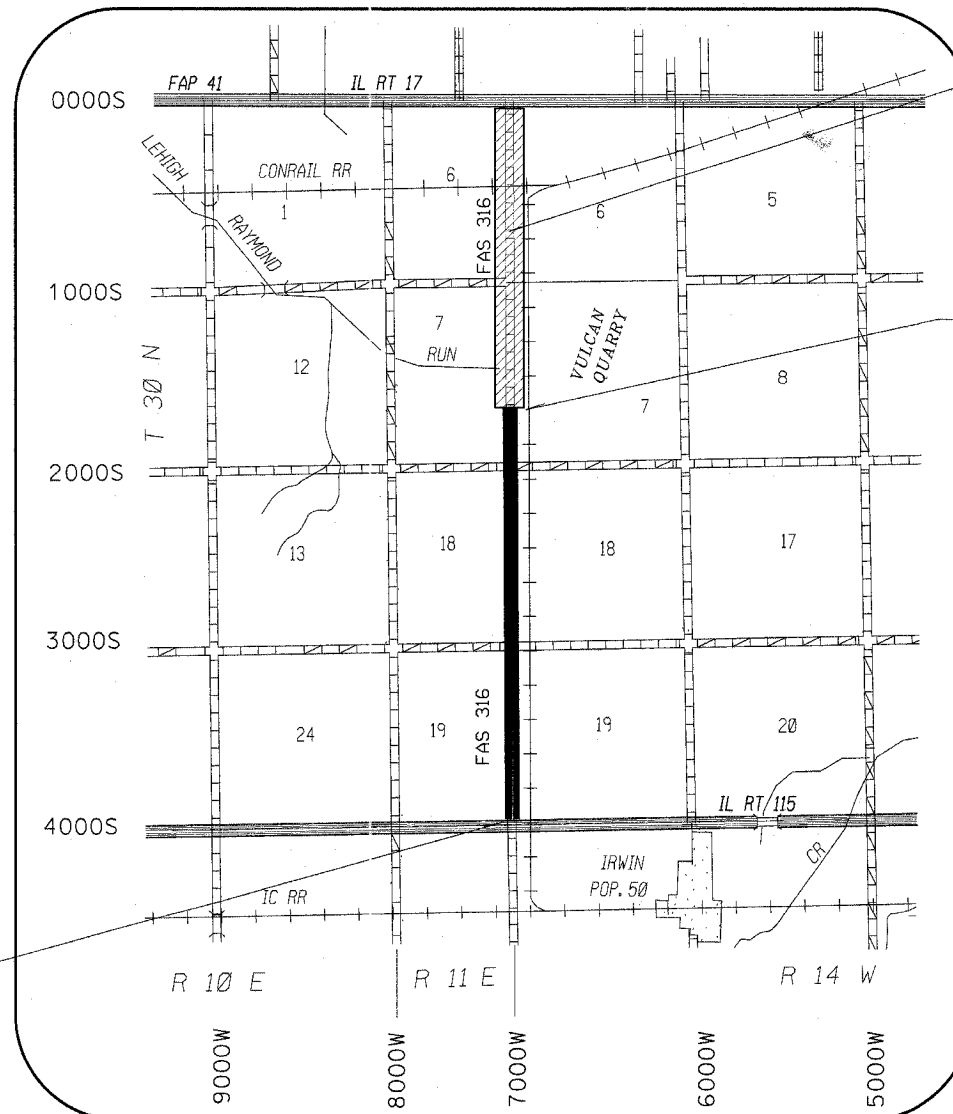
F.A.S. ROUTE NO.	SEC.	COUNTY	NO. SHEETS	SHEET NO.
316	*	Kankakee	3	1
ILLINOIS PROJECT RS-316 (108)			CONTRACT NO. 87307	

\* 02-00072-06-RS

KANKAKEE COUNTY



PROJECT LOCATION



STA. 0+07 TO STA. 87+00  
ROAD IMPROVEMENT SEGMENT  
UNDER A SEPARATE CONTRACT.  
SEC. 02-00072-07-RS

CONSTRUCTION  
STARTS  
STA. 86+70

THE ACCEPTANCE OF THIS PROJECT  
IS BASED ON THE MINIMUM DESIGN  
CRITERIA FOR LOCAL AGENCY  
PAVEMENT PRESERVATION POLICY  
(LAPP) PROJECTS

CLASS III ROAD  
2005 CURRENT A.D.T. = 1337  
2015 DESIGN A.D.T. = 1479  
DESIGN SPEED = 55 M.P.H.  
ROADWAY CLASSIFICATION = COLLECTOR

STATE OF ILLINOIS  
DEPARTMENT OF TRANSPORTATION  
DIVISION OF HIGHWAYS

Submitted April 6, 2005

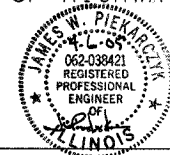
James W. Piekarczyk, P.E.  
County Engineer

Passed 4/11, 2005

James R. Threadgill III  
Bureau Chief, Local Roads & Streets

Approved APRIL 11, 2005

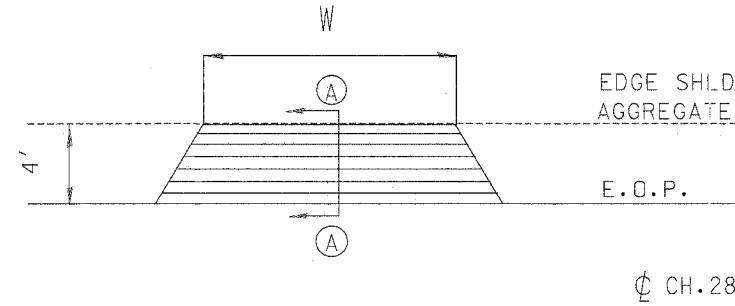
Gregory L. Mounts, P.E.  
Region 2 Engineer



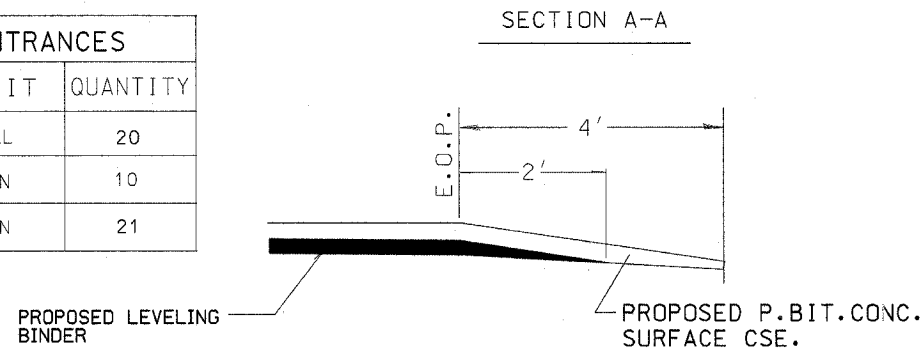
GROSS LENGTH = 12,791 LIN FT = 2.423 MILES

# TYPICAL ENTRANCE DETAIL

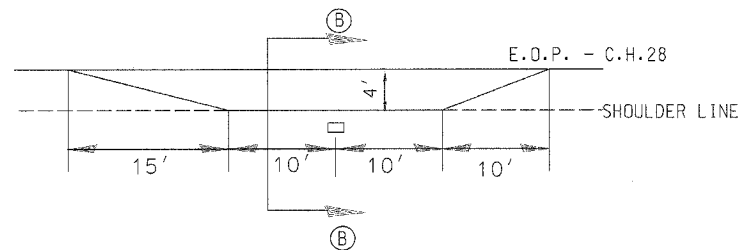
W : WIDTH OF APPROACH PADS IS ESTIMATED AT 20' PER ENTRANCE . THE ACTUAL CONSTRUCTED WIDTH MAY VARY AS DIRECTED BY THE ENGINEER TO FIT THE EXISTING ENTRANCES .  
FIELD ENTRANCES SHALL NOT RECEIVE BIT.CONCRETE SURFACING



ESTIMATED QUANTITIES- 11 ENTRANCES		
ITEM	UNIT	QUANTITY
BITUMINOUS MATERIALS ( PRIME COAT )	GAL	20
LEVELING BINDER (MM) SP N90	TON	10
POLY BIT.CONC.SURFACE CSE SP MIX C, N90	TON	21

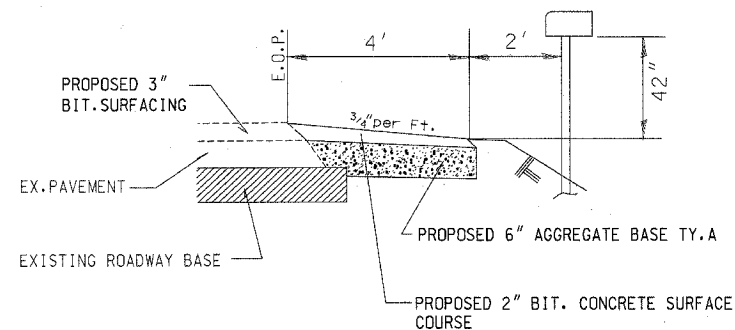


# TYPICAL MAILBOX TURNOUT DETAIL



MAILBOX TURNOUT SCHEDULE			
STATION	SIDE	STATION	SIDE
99+56	LT	177+47	LT
113+96	LT	182+16	LT
151+37	LT	209+00	LT

SECTION B-B

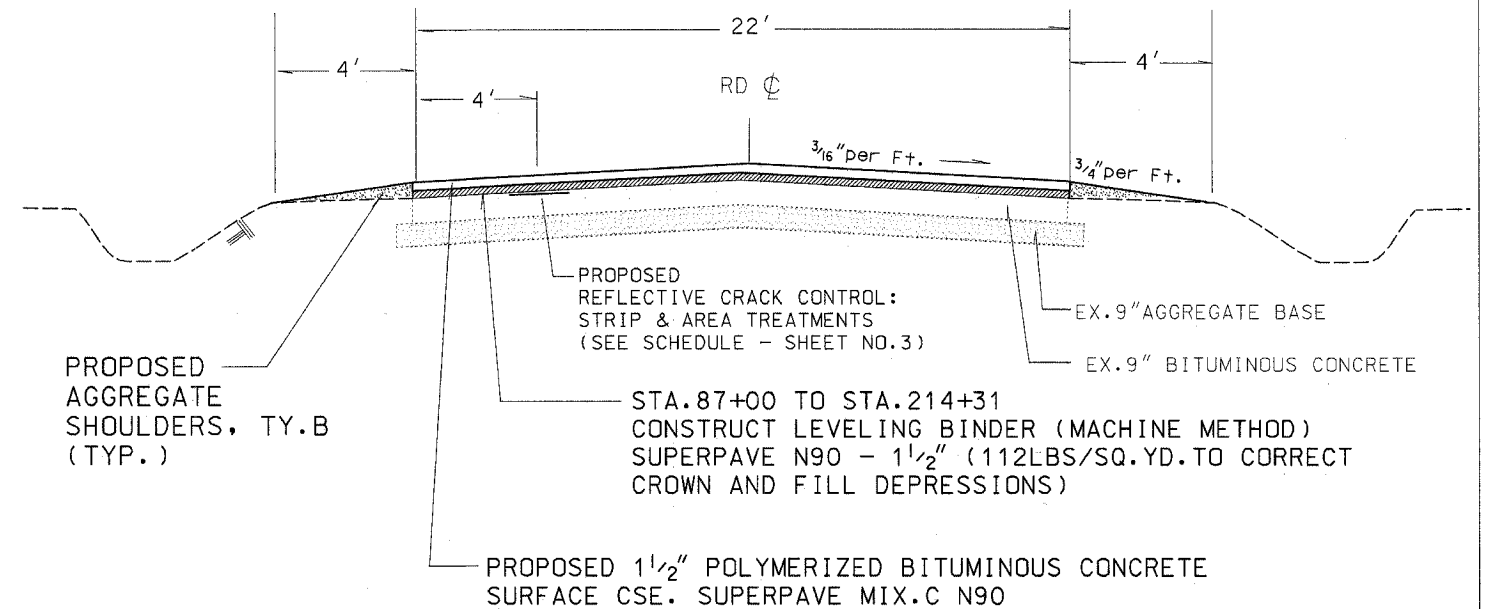


ESTIMATED QUANTITIES - 6 MAILBOX TURNOUTS		
ITEM	UNIT	QUANTITY
EARTH EXCAVATION	CU YD	20
AGG. BASE CSE. , TY. A	TON	41
BIT. MATERIALS ( PRIME COAT )	GAL	12
POLY.BIT. CONC. SURFACE CSE. SUPERPAVE MIX C , N90	TON	16

SECTION	COUNTY	TOTAL SHEETS	SHEET NO.
02-00072-06-RS	KANKAKEE	3	2
CONTRACT NO. 87307			

# TYPICAL CROSS SECTION

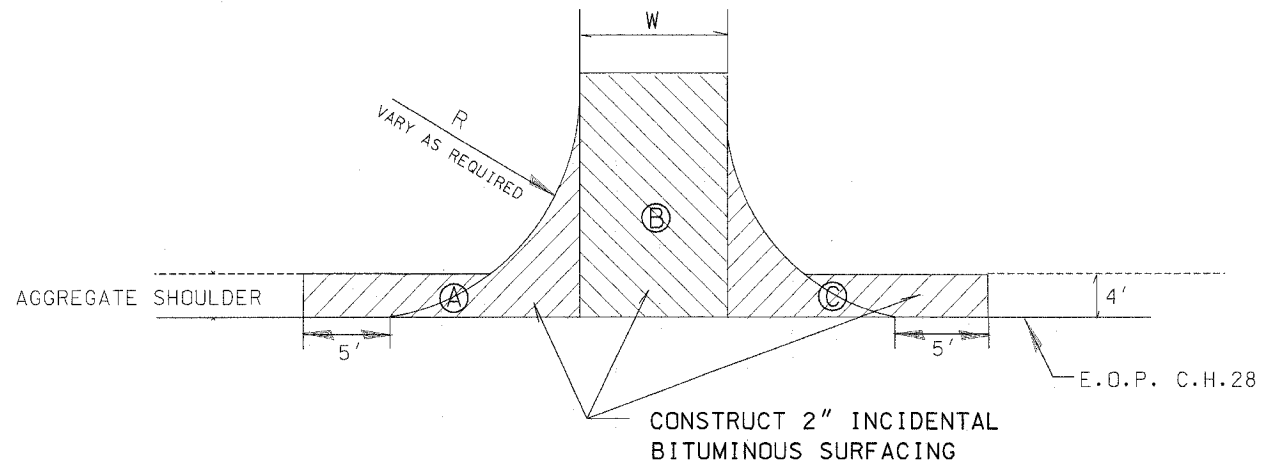
STA.86+70 TO STA.214+61



# ESTIMATED QUANTITIES ON TANGENTS

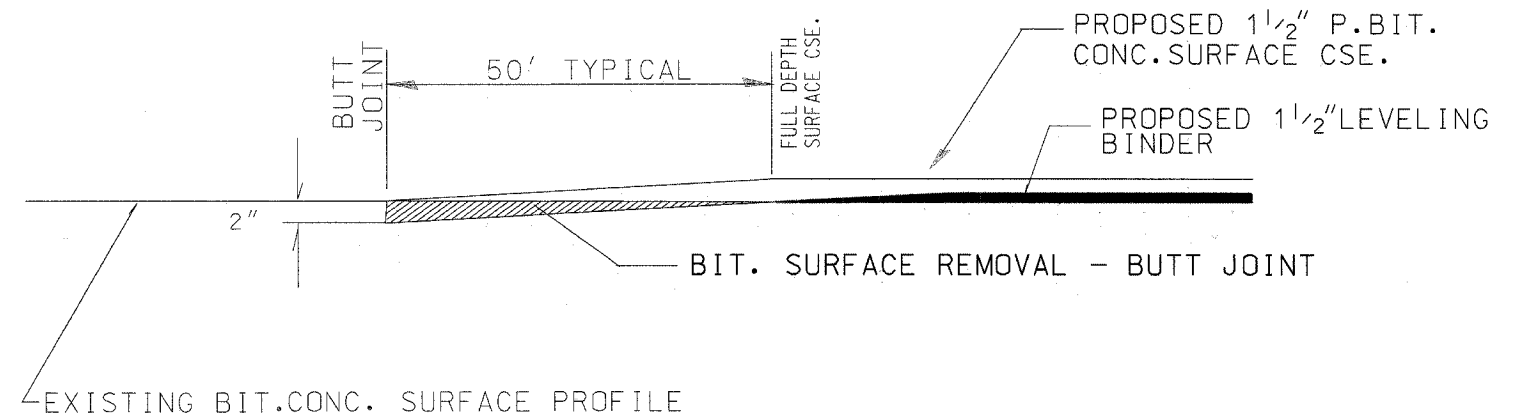
ITEM	UNIT	QUANTITY
AGGREGATE SHOULDERS TY.B	TON	1787
BITUMINOUS MATERIALS ( PRIME COAT )	GALLON	6253
AGGREGATE (PRIME COAT)	TON	125
POLY.BIT.CONC.SURF.CSE. SUPERPAVE MIX C , N90	TON	2635
LEVELING BINDER (MM) SUPERPAVE N90	TON	2625
SHORT-TERM PAVEMENT MARKING	FOOT	2558

# INTERSECTION DETAIL



SECTION	COUNTY	TOTAL SHEETS	SHEET NO.
02-00072-06-RS	KANKAKEE	3	3
CONTRACT NO. 87307			

# PAVEMENT REMOVAL DETAILS



STATION	AREA			WIDTH	RADIUS	INCIDENTAL BIT. SURFACING (TON)	BIT. MATRLS. (PRIME COAT) (GAL)	AGGREGATE (PRIME COAT) (TON)	LOCATION
	A	B	C						
107+51LT	A	B	C	16	30	15	5	0.5	2000S
107+51RT	A	B	C	16	30	15	5	0.5	2000S
161+06LT	A	B	C	16	30	15	5	0.5	3000S
161+06RT	A	B	C	16	30	15	5	0.5	3000S
214+61	A		C	22	30	20	10	1.0	IL RT 115
TOTALS						80	30	3	

STATION	BIT. SURFACE REMOVAL - BUTT JOINT	TEMPORARY RAMP (3' Wide)
86+70	73	7
214+61	189	28
TOTALS	262 SQ YD	35 SQ YD

## Pavement Design Data

Design Period = 20 Years  
 ADT = 1337 (2005) 1479 (2015)  
 P.V. = 80 = 1183 S.U. = 5% = 74 M.U. = 15% = 222  
 T.F. = 0.76  
 Dt = 3.30

Pavement Structure Number

Ex. 9"	AGGREGATE BASE (crushed)	9	x 0.08 =	0.72
Ex. 4"	CLASS B PLANT MIX	4	x 0.12 =	0.48
Ex. 4"	CLASS B PLANT MIX	3	x 0.17 =	0.51
Ex. 2"	CLASS I	2	x 0.23 =	0.60
Prop. 3"	BC Surface Cse.	3	x 0.40 =	1.20
				3.51

Marshall Stability  $\geq$  1700

	SUPERPAVE LEVEL BINDER	SUPERPAVE SURFACE
PG GRADE	PG64-22	SBS PG70-22
MAX % RAP ALLOWABLE**	-	0 %
DESIGN AIR VOIDS	4.0% @ N90	4.0% @ N90
MIXTURE COMPOSITION	IL 9.5 OR IL 12.5	IL 9.5 OR IL 12.5
FRICTION AGGREGATE	-	MIXTURE C
PLANT CONTROL LIMITS	CLASS I	CLASS I
DENSITY TEST METHOD	CORES/NUCLEAR	CORES/NUCLEAR

\*\* IF RAP OPTION IS SELECTED, THE ASPHALT CEMENT GRADE MAY NEED TO BE ADJUSTED. THIS WILL BE DETERMINED BY THE ENGINEER.

## REFLECTIVE CRACK CONTROL SCHEDULE

STATION	AREA TREATMENT	STRIP TREATMENT
87+00 TO 162+00		7500 FOOT
162+00 TO 198+00	8800 SQ YD	
198+00 TO 214+31		1631
	8800 SQ YD	9131 FOOT

## GENERAL NOTES:

- IT SHALL BE THE CONTRACTOR'S RESPONSIBILITY TO DETERMINE THE ACTUAL LOCATION OF ALL UTILITY LOCATIONS.
- PERMANENT PAVEMENT MARKINGS TO BE INSTALLED BY THE KANKAKEE COUNTY HIGHWAY DEPT.