

F.A.S. ROUTE NO.	SEC.	COUNTY	TOTAL SHEETS	SHEET NO.
FAS 221	*	MERCER	11	1
ILLINOIS PROJECT				

INDEX OF SHEETS

- 1. COVER SHEET
- 2. TYPICAL SECTION
- 3.-5. GENERAL NOTES, SUMMARY OF QUANTITIES, AND SCHEDULES
- 6.-7. DETAILS
- 8.-14. PLAN AND PROFILE
- CROSS SECTIONS

STATE OF ILLINOIS
DEPARTMENT OF TRANSPORTATION

PLANS FOR PROPOSED
LOCAL AGENCY IMPROVEMENT

PLAN 1 INCH = 100 FEET
 PROFILE HOR. 1 INCH = 100 FEET
 PROFILE VERT. 1 INCH = 10 FEET
 CROSS SECTIONS 1 INCH = 5 FEET

RS-221(104)

* 01-00093-00-RS

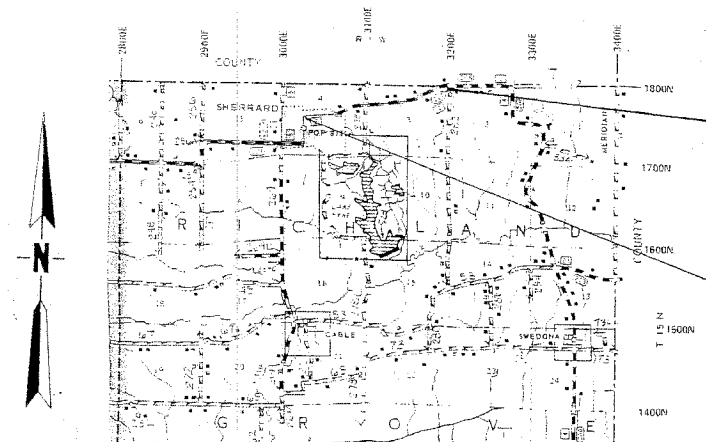
CONTRACT 89315

FAS ROUTE 221 SECTION 01-00093-00-RS COUNTY: MERCER
 Sherrard Road
 PROJECT RS-221(104)

3R GUIDELINES

STANDARDS

000001-04	STANDARD SYMBOLS, ABBREVIATIONS AND PATTERNS
280001-02	TEMPORARY EROSION CONTROL SYSTEMS
542301--	PRECAST REIN. CONC. FLARED END SECTIONS
701001-01	OFF ROAD OPERATION 2L-2W 15MIN AWAY 45 MPH
701006-02	OFF ROAD OPERATION 2L-2W 15' TO PVT EDGE 45 MPH
701011-01	OFF ROAD OPERATION 2L-2W DAY ONLY 45 MPH
701201-02	LANE CLOSURE 2L-2W DAY ONLY ON RD TO 24' OFF RD 45 MPH
701301-02	LANE CLOSURE 2L-2W SHORT TIME OPERATIONS
701306-01	LANE CLOSURE 2L-2W SLOW MOVE OPS DAY ONLY 45 MPH
701311-02	LANE CLOSURE 2L-2W MOVING OPERATIONS DAY ONLY
701501-03	URBAN LANE CLOSURE 2L-2W UNDIVIDED
702001-06	TRAFFIC CONTROL DEVICES
780001-01	TYPICAL PAVEMENT MARKINGS

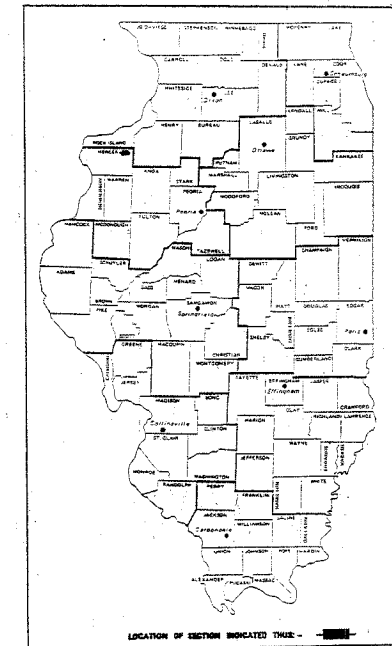


LOCATION MAP

END PROJECT
STATION 98+00

BEGIN PROJECT
STATION 0+00

IMPROVEMENT CONSISTS OF RESURFACING
2 MILES OF ROADWAY.



LOCATION OF SECTION INDICATED THERE -

QC/QA BITUMINOUS SUPERPAVE PROJECT

JOB NO. - C-94-102-03

CONTRACT - 89315

FUNCTIONAL CLASSIFICATION - MAJOR COLLECTOR

TRAFFIC - 2275 ADT (2014)

DESIGN SPEED - 50 MPH

VARIANCES GRANTED = NONE

UTILITY LOCATION: J.U.L.I.E. 1-800-892-0123

GROSS LENGTH OF SECTION - 9800.00 FEET (1.856 MI.)

NET LENGTH OF SECTION - 9800.00 FEET (1.856 MI.)



Star L. Rheynard
3-14-05
MY LICENSE EXPIRES 11-30-05

APPROVED	<i>April 4, 2005</i> <i>Star L. Rheynard</i> COUNTY ENGINEER
PASSED	<i>April 11, 2005</i> <i>L. Scott DeBelle</i> DISTRICT FOUR ENGINEER OF LOCAL ROADS & STREETS
Releasing For	<i>Blume</i> 20 05
Bid Based on	<i>Blume</i> 20 05
Limited Review	<i>Blume</i>
DEPUTY DIRECTOR OF HIGHWAYS, REGION THREE ENGINEER STATE OF ILLINOIS DEPARTMENT OF TRANSPORTATION	

Cat. # 032808 - 00D