

B.M. Spk. & W. In Root of Oak Tree
 73 Ft. 21.56 Elev. 547.00 Elev. 794.97

B.M. Spk. & W. In Gate Post 59 Ft.
 Lt. Sta. 694.97 Elev. 800.32

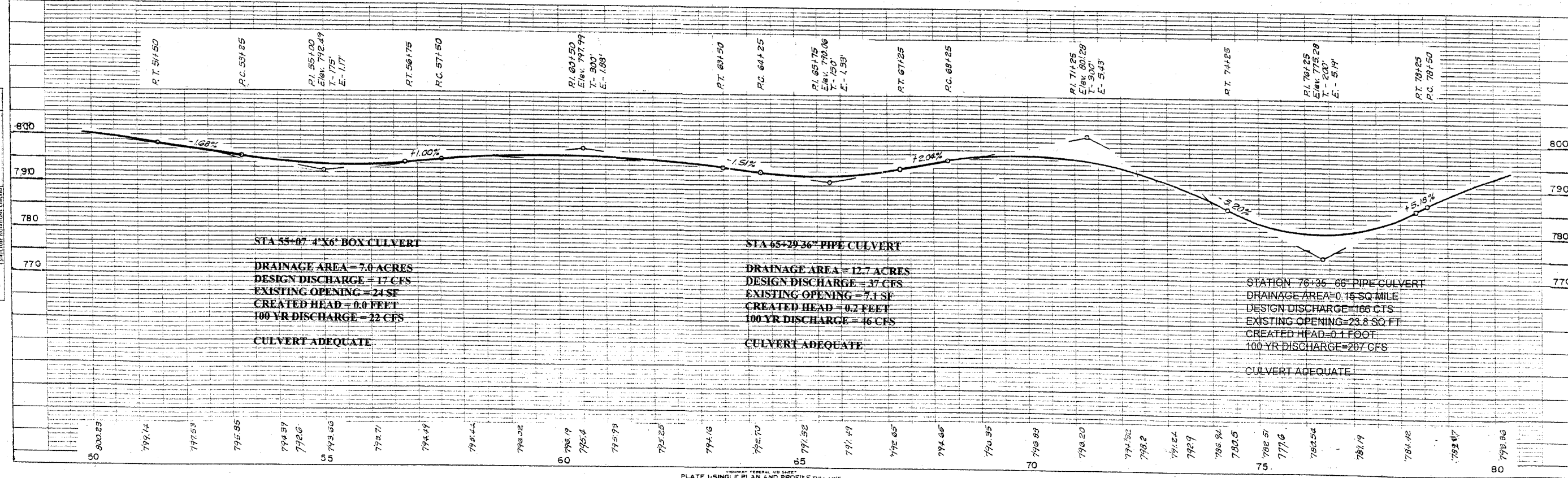
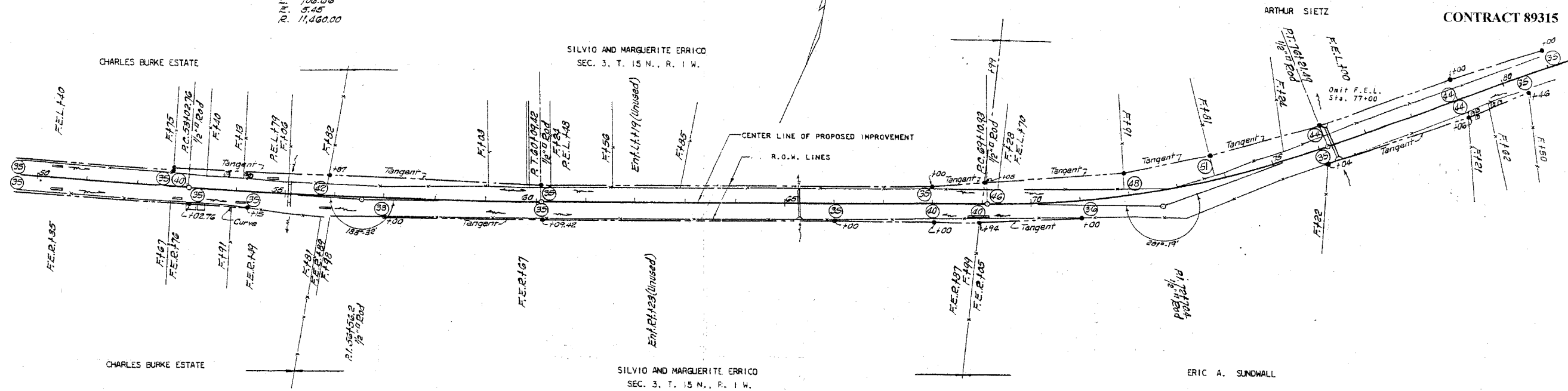
CURVE DATA
 P.I. 56+56.2
 I. 3° 32'
 D. 0° 30' 00"
 L. 353.24
 E. 706.66
 F. 5.45
 R. 11,460.00

CURVE DATA
 P.I. 78+70.4
 I. 2° 19'
 D. 5° 00'
 L. 359.47
 E. 710.56
 F. 33.32
 R. 1910.00

ROUTE NO.	SEC.	COUNTY	TOTAL SHEETS	SHEET NO.
FAS 221	*	MERCER	11	10

ILLINOIS PROJECT RS-221(104)

* 01-00093-00-RS
 CONTRACT 89315



STA 55+07 4'x6' BOX CULVERT
 DRAINAGE AREA = 7.0 ACRES
 DESIGN DISCHARGE = 17 CFS
 EXISTING OPENING = 24 SF
 CREATED HEAD = 0.0 FEET
 100 YR DISCHARGE = 22 CFS
 CULVERT ADEQUATE

STA 65+29 36" PIPE CULVERT
 DRAINAGE AREA = 12.7 ACRES
 DESIGN DISCHARGE = 37 CFS
 EXISTING OPENING = 7.1 SF
 CREATED HEAD = 0.2 FEET
 100 YR DISCHARGE = 46 CFS
 CULVERT ADEQUATE

STATION 76+35 66" PIPE CULVERT
 DRAINAGE AREA = 0.15 SQ MILE
 DESIGN DISCHARGE = 166 CFS
 EXISTING OPENING = 23.8 SQ FT
 CREATED HEAD = 0.1 FOOT
 100 YR DISCHARGE = 207 CFS
 CULVERT ADEQUATE

NOTES:
 1. ALL DIMENSIONS ARE IN FEET AND DECIMALS THEREOF.
 2. THE PROPOSED IMPROVEMENT IS SHOWN IN DASHED LINES.
 3. THE EXISTING IMPROVEMENT IS SHOWN IN SOLID LINES.
 4. THE CENTER LINE OF THE PROPOSED IMPROVEMENT IS SHOWN IN DASHED LINES.
 5. THE R.O.W. LINES ARE SHOWN IN SOLID LINES.
 6. THE CURVE DATA IS SHOWN IN THE PLAN VIEW.
 7. THE PROFILE VIEW IS SHOWN IN THE PROFILE VIEW.
 8. THE CULVERT DETAILS ARE SHOWN IN THE CULVERT DETAILS.