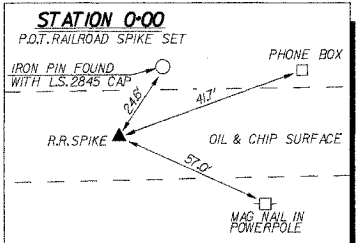


ROUTE #	SECTION	COUNTY	TOTAL	SHEET #
TR35	98-0312-00-BR	COLES	15	2
JOB # 3137-454-99				



**TREE REMOVAL**  
6" DIAMETER TO 15" DIAMETER

STATION	OFFSET	UNIT
3+92	35' LT.	12"
4+01	22' LT.	10"
4+05	31' LT.	10"
4+13	25' LT.	13"
45 UNITS		

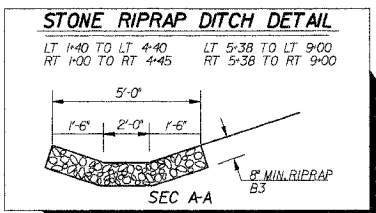
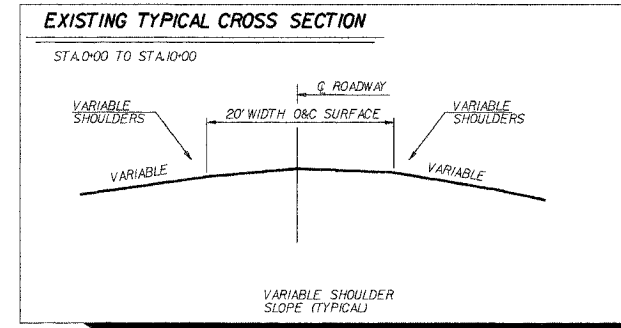
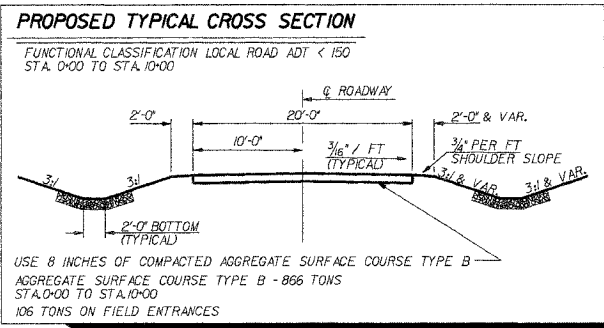
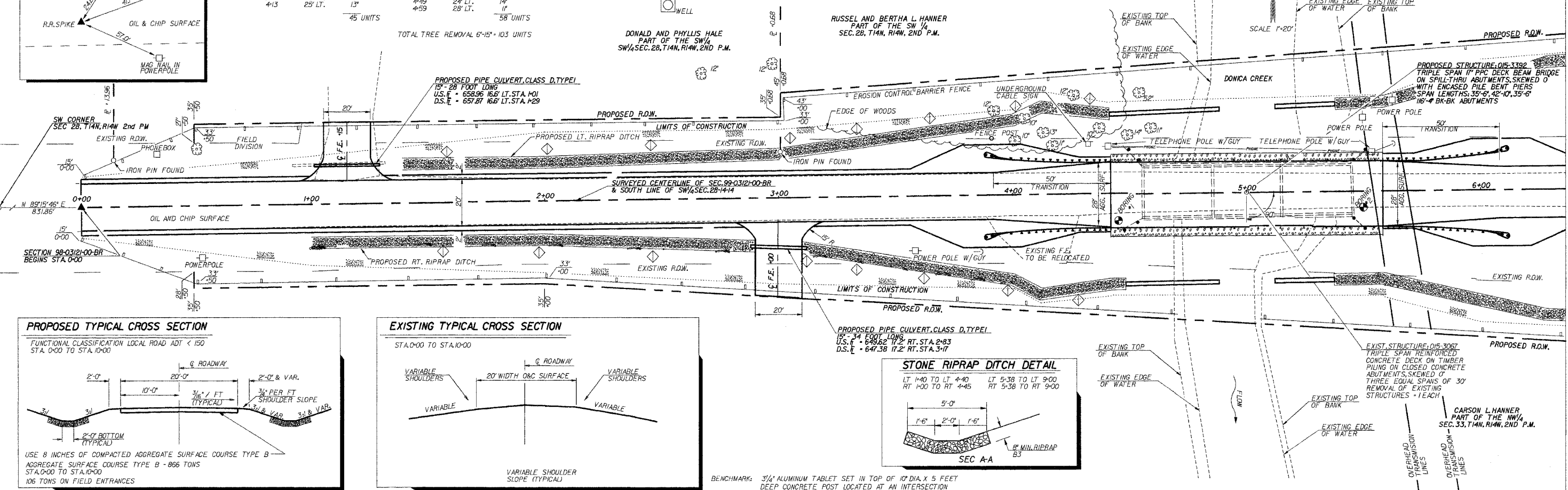
**TREE REMOVAL**  
6" DIAMETER TO 15" DIAMETER

STATION	OFFSET	UNIT
4+17	20' LT.	11"
4+26	4' LT.	12"
4+31	21' LT.	10"
4+49	24' LT.	14"
4+59	28' LT.	11"
58 UNITS		

TOTAL TREE REMOVAL 6"-15" = 103 UNITS

**TREE REMOVAL**  
OVER 15" DIAMETER

STATION	OFFSET	UNIT
4+54	42' LT.	52'
52 UNITS		



BENCHMARK: 3/4" ALUMINUM TABLET SET IN TOP OF 10" DIA. X 5 FEET DEEP CONCRETE POST LOCATED AT AN INTERSECTION LABELED 1700, 2700E. ELEV. = 652.41 MONU. # 3067

