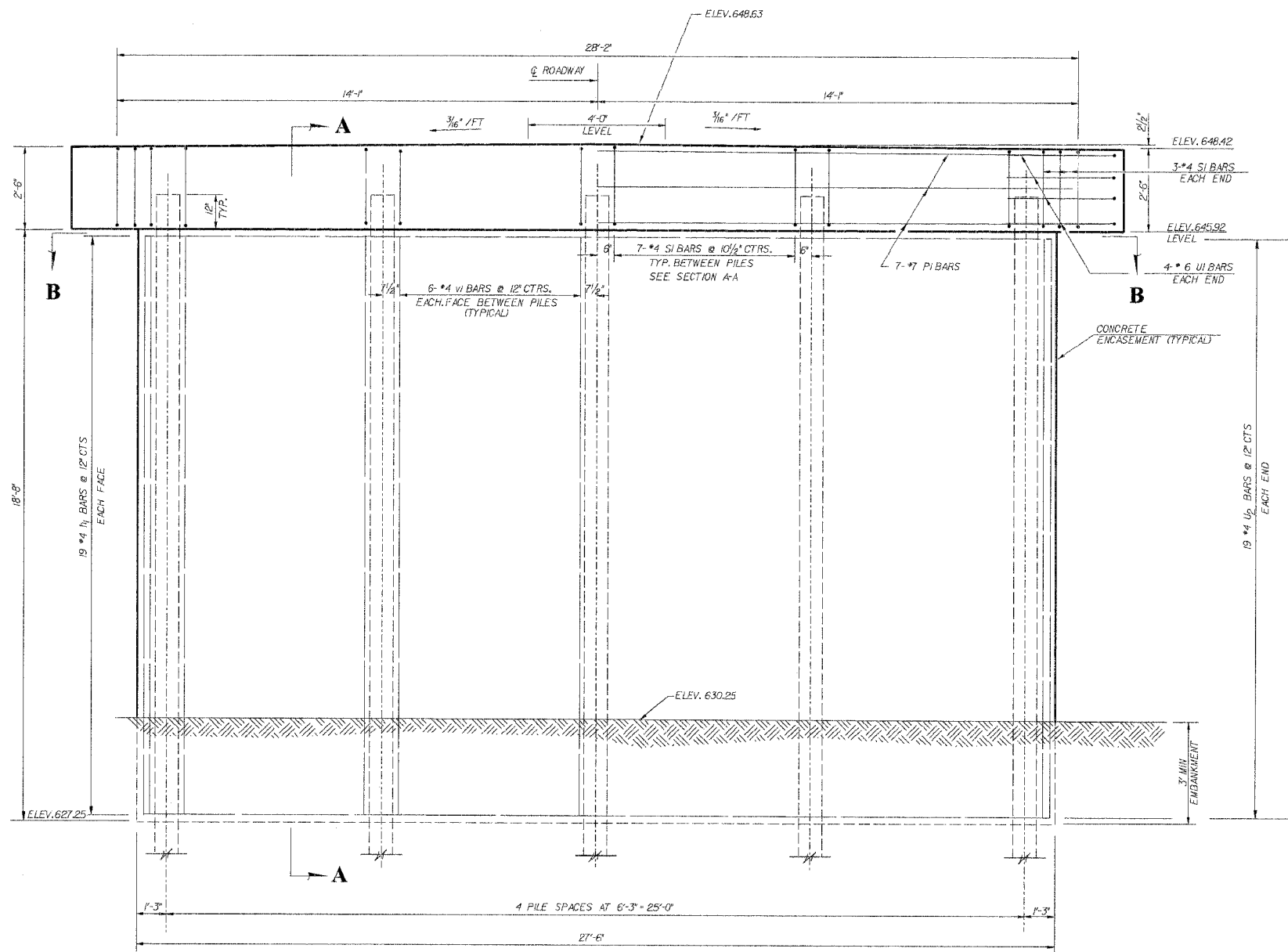
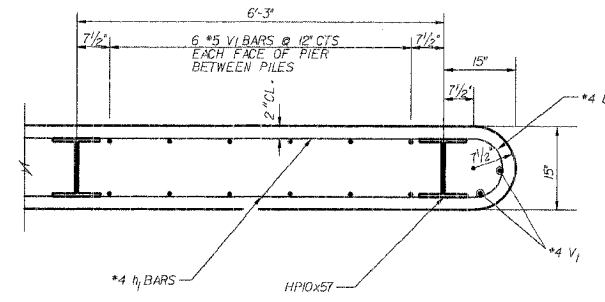


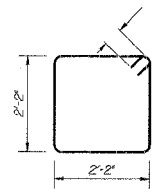
PLAN



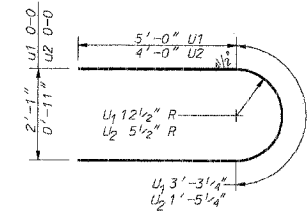
ELEVATION



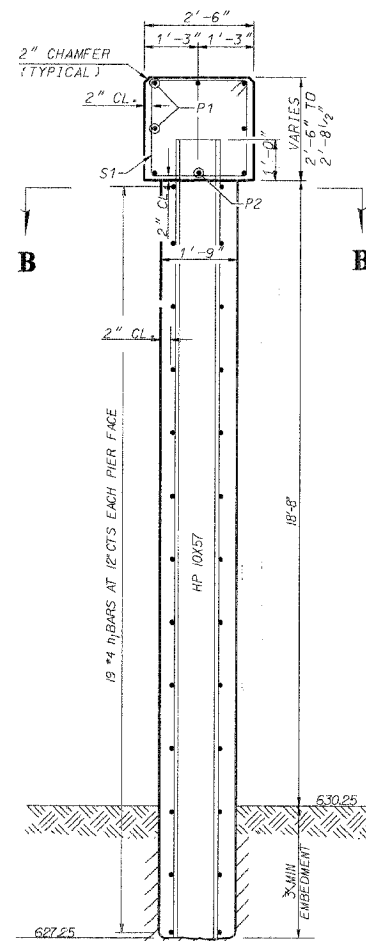
PARTIAL SECTION B-B



BAR S1



BAR U1 & U2



SECTION A-A

PILE DATA

TYPE	STEEL HP10x57
NO. REQUIRED	10 *
WEST PIER CAPACITY	44.3 TON/PILE DRIVEN TO 66.5 TON BEARING
EAST PIER CAPACITY	44.3 TON/PILE DRIVEN TO 66.5 TON BEARING
EST. LENGTH FOR WEST PIER	50'
EST. LENGTH FOR EAST PIER	45'

* INCLUDES ONE TEST PILE TO BE DRIVEN AT A PERMANENT LOCATION IN WEST PIER

BILL OF MATERIALS

TWO PIERS				
BAR	NO.	SIZE	LENGTH	SHAPE
h1	76	#4	26'-0"	—
p1	14	#7	28'-2"	—
p2	8	#7	5'-8"	—
s1	68	#4	9'-5"	□
u1	16	#6	13'-3"	U
u2	76	#4	9'-5"	U
v1	108	#5	18'-4"	—
CONCRETE STRUCTURES			CU. YD.	14.5
REINFORCEMENT BARS			POUND	5510
TEST PILE - ST. HP10x57			EACH	1
FUR STEEL PILES HP10x57			FOOT	405
DRIVE STEEL PILES			FOOT	405
CONCRETE ENCASEMENT			CU. YD.	47.1

NOTE: ALL EXPOSED EDGES SHALL HAVE STANDARD 3/4" CHAMFER

PIER DETAILS

SEC. 98-03121-00-BR
EAST OAKLAND TOWNSHIP
COLES COUNTY

McCLINTOCK
CIVIL ENGINEERING SERVICE
404 SHAW AVENUE, PARIS, ILL. 61944
PHONE (217) 466-6110

DRW. R.T. DATE 10/27/02 SHEET 8 OF 15
CK. SCALE
APPR. JOB NO. 3137-454-99