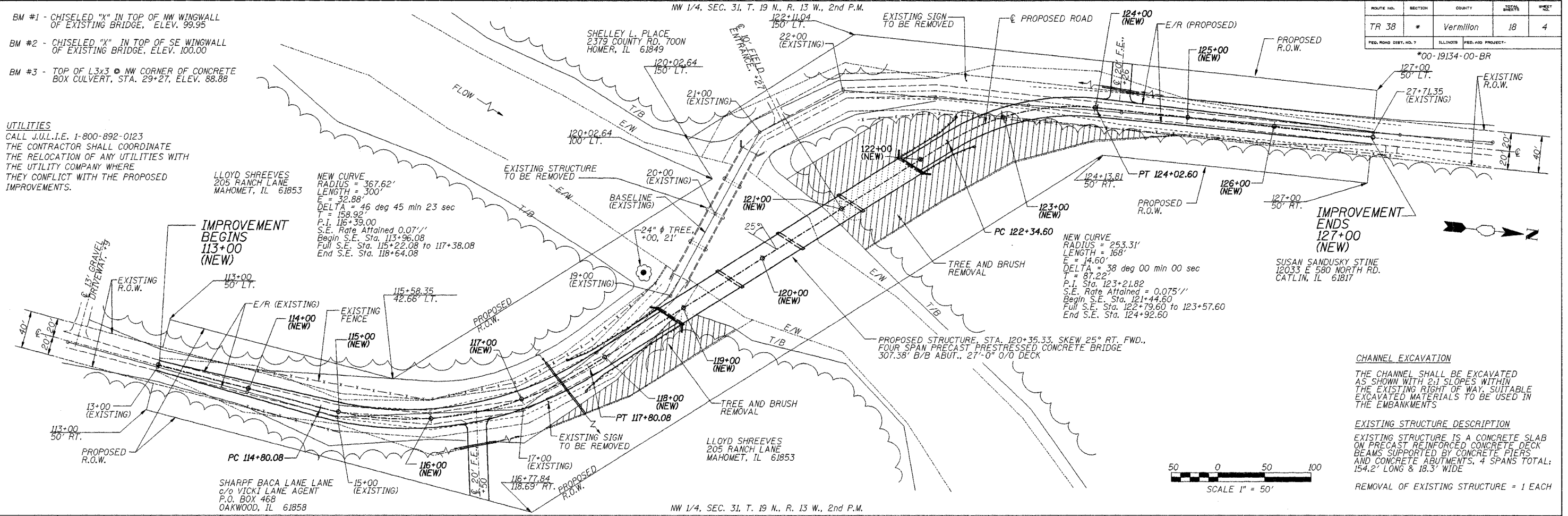


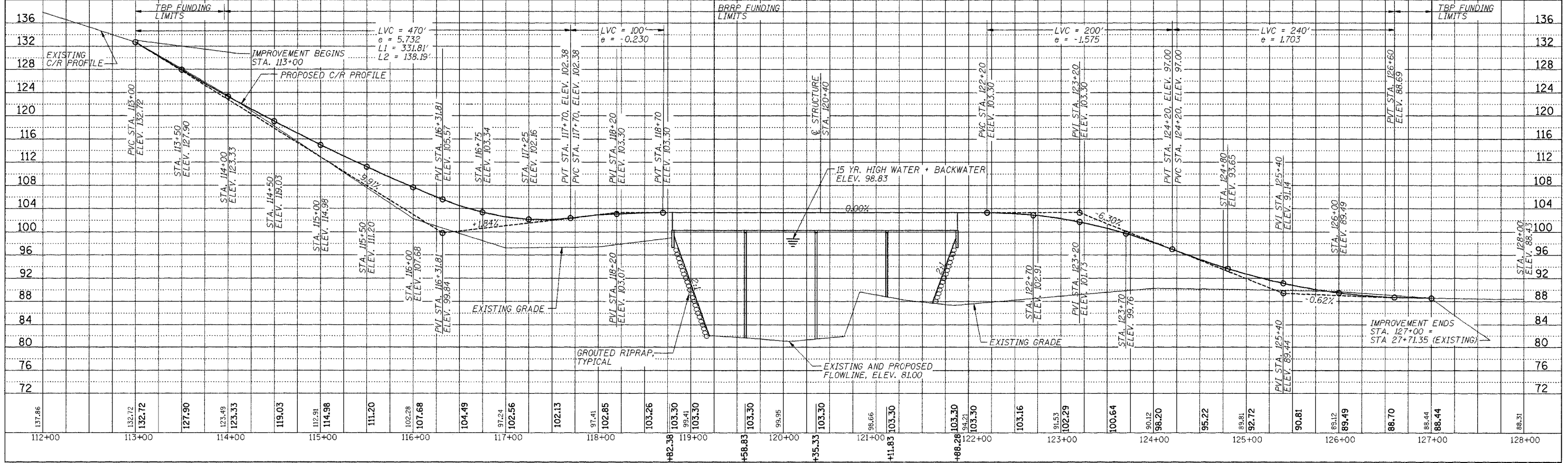
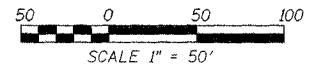
ROUTE NO.	SECTION	COUNTY	SHEET NO.	TOTAL SHEETS
TR 38	*	Vermilion	18	4



**CHANNEL EXCAVATION**  
 THE CHANNEL SHALL BE EXCAVATED AS SHOWN WITH 2:1 SLOPES WITHIN THE EXISTING RIGHT OF WAY. SUITABLE EXCAVATED MATERIALS TO BE USED IN THE EMBANKMENTS

**EXISTING STRUCTURE DESCRIPTION**  
 EXISTING STRUCTURE IS A CONCRETE SLAB ON PRECAST REINFORCED CONCRETE DECK BEAMS SUPPORTED BY CONCRETE PIERS AND CONCRETE ABUTMENTS, 4 SPANS TOTAL, 154.2' LONG & 18.3' WIDE

REMOVAL OF EXISTING STRUCTURE = 1 EACH



PLAN & PROFILE STA. 112+00 TO STA. 128+00