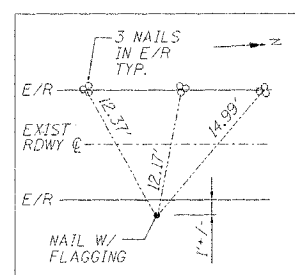
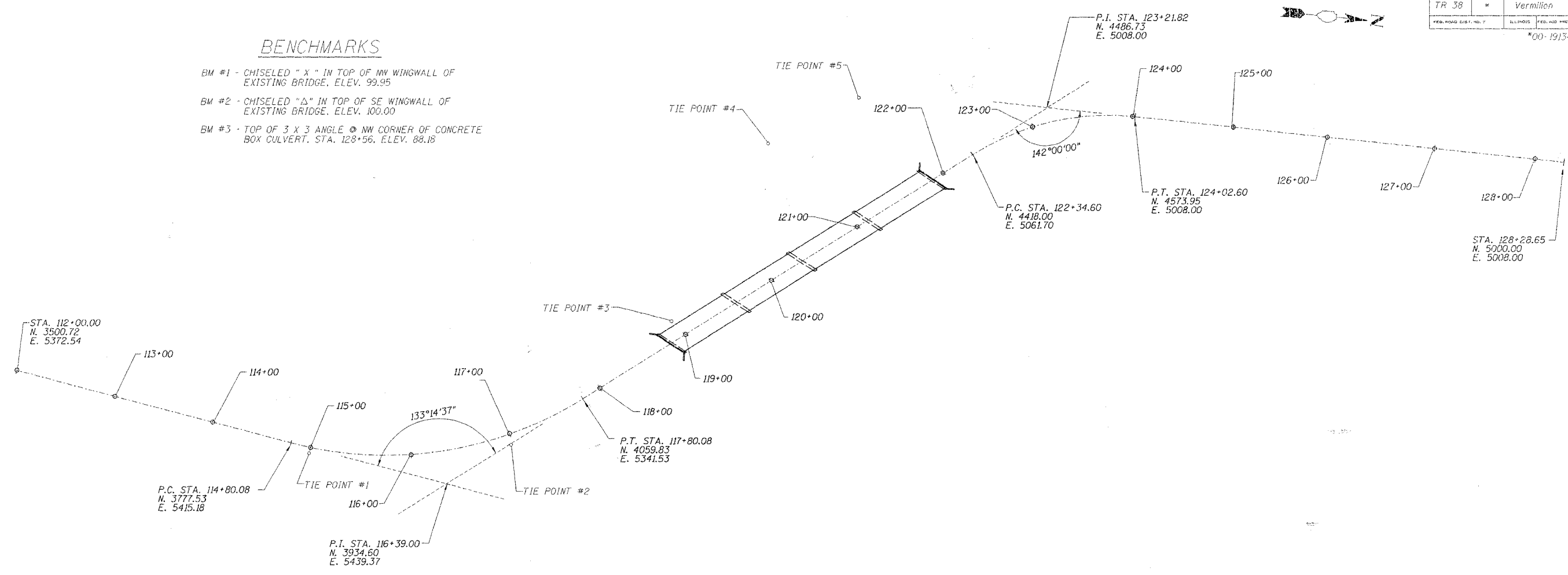


PROJECT NO.	SECTION	COUNTY	SHEET
TR 38	*	Vermilion	18
FED. ROAD DIST. NO. 7		ILLINOIS	FED. ROAD PROJECT

*00-19134-00-BR

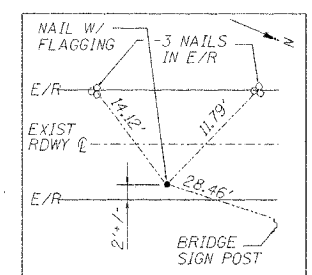
BENCHMARKS

- BM #1 - CHISELED "X" IN TOP OF NW WINGWALL OF EXISTING BRIDGE, ELEV. 99.95
- BM #2 - CHISELED "Δ" IN TOP OF SE WINGWALL OF EXISTING BRIDGE, ELEV. 100.00
- BM #3 - TOP OF 3 X 3 ANGLE @ NW CORNER OF CONCRETE BOX CULVERT, STA. 128+56, ELEV. 88.18



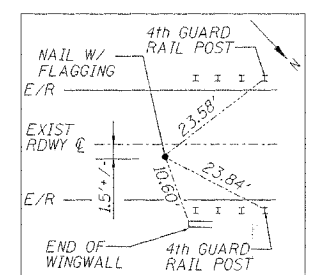
© STA. 114+99.64, 6.03' RT.
 @ STA. 15+00
 N. 3796.34
 E. 5423.64

TIE POINT #1



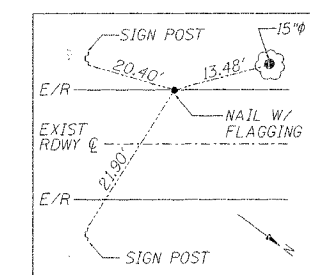
© STA. 116+97.58, 10.51' RT.
 @ STA. 17+00
 N. 3994.15
 E. 5394.14

TIE POINT #2



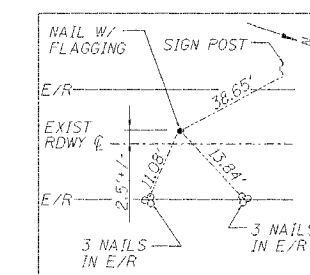
© STA. 118+95.02, 18.07' LT.
 @ STA. 19+00
 N. 4139.27
 E. 5256.53

TIE POINT #3



© STA. 120+69.12, 116.50' LT.
 @ STA. 21+00
 N. 4215.88
 E. 5071.78

TIE POINT #4



© STA. 121+68.66, 106.38' LT.
 @ STA. 22+00
 N. 4300.23
 E. 5018.08

TIE POINT #5