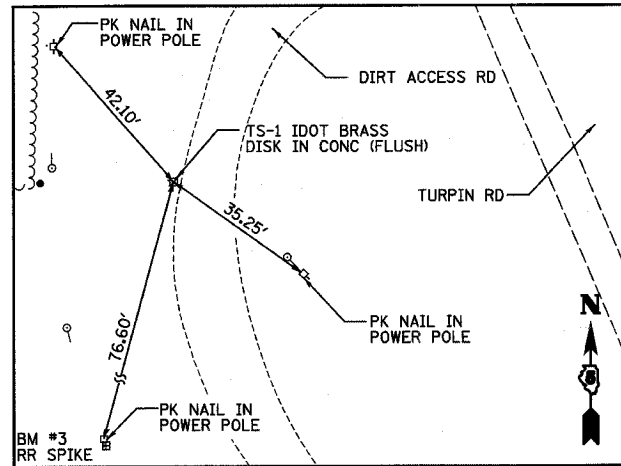
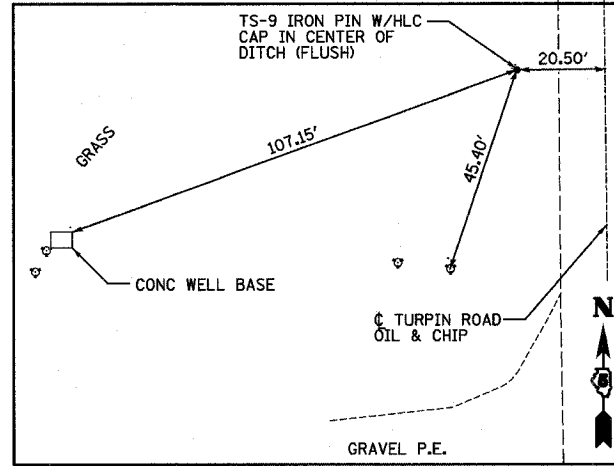


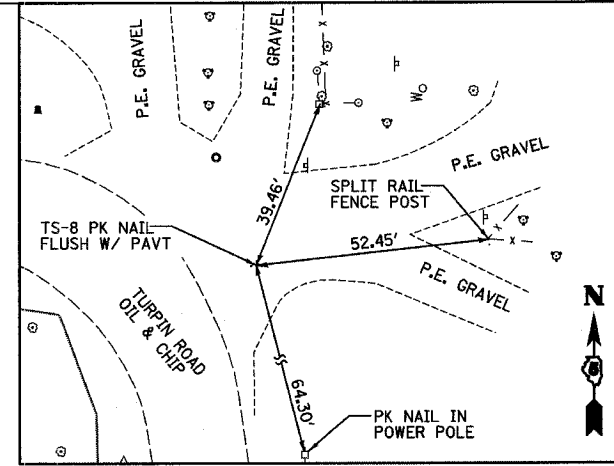
ROUTE NO.	SECTION	COUNTY	TOTAL SHEETS	SHEET NO.
CH 31	*	MACON	162	13
FED. ROAD DIST. NO.		ILLINOIS	PROJECT	
* 02-00175-00-PV				



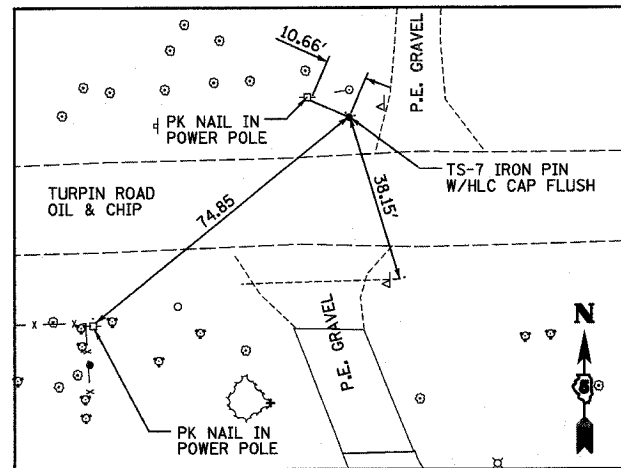
TS - 1
 STA 502+01.76
 O/S 97.71 LT
 E 19402.11
 N 138242.98



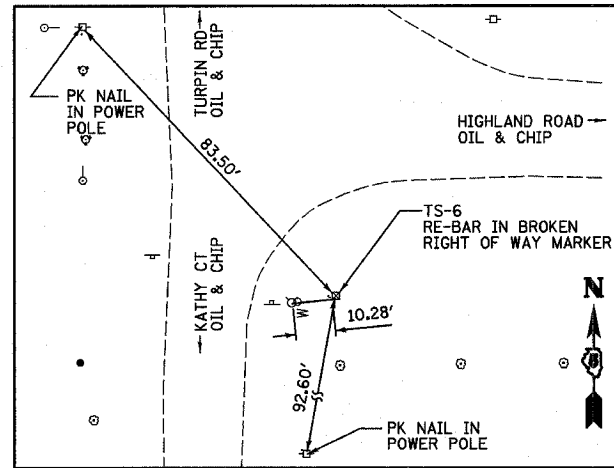
TS - 9
 STA 524+95.09
 O/S 22.79 LT
 E 19351.01
 N 140559.31



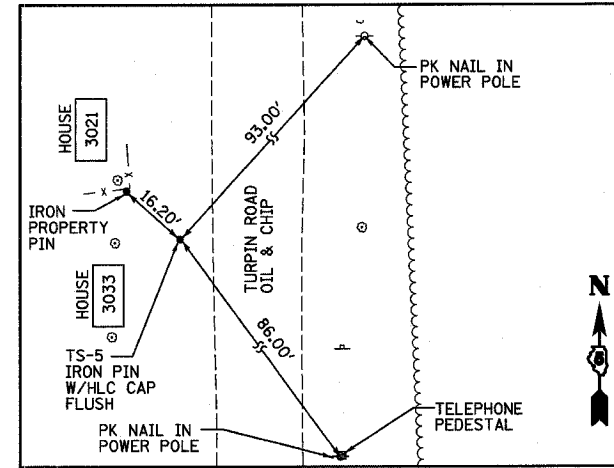
TS - 8
 STA 537+38.15
 O/S 52.01 RT
 E 19373.73
 N 141828.60



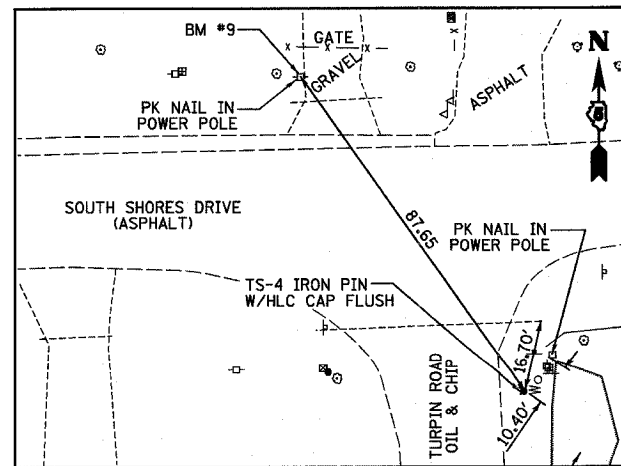
TS - 7
 STA 544+79.43
 O/S 19.91 RT
 E 18606.42
 N 141848.49



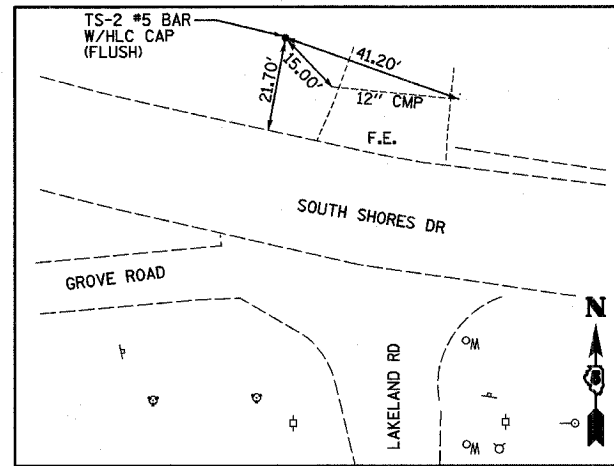
TS - 6
 STA 549+91.35
 O/S 65.63 LT
 E 18064.78
 N 141779.74



TS - 5
 STA 558+16.12
 O/S 18.13 LT
 E 18010.94
 N 142638.09

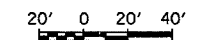


TS - 4
 STA 564+98.59
 O/S 70.62 RT
 E 18037.28
 N 143354.36



TS - 2
 STA 569+93.31
 O/S 33.48 RT
 E 17520.24
 N 143444.64

BM#	STA	O/S	ELEV	DESCRIPTION
3	501+41.48	144.34 LT	670.72	RR SPIKE IN POWER POLE W OF HARRYLAND AND TURPIN INTERSECTION
4	508+96.98	29.19 LT	666.07	RR SPIKE IN POWER POLE W SIDE OF TURPIN RD
5	529+21.91	21.74 RT	670.04	RR SPIKE IN POWER POLE EAST OF TURPIN RD NW CORNER OF PROPERTY
6	539+55.62	37.50 RT	654.71	"M" IN MUELLER ON FIRE HYDRANT NE CORNER OF TEMPE DR AND HIGHLAND RD.
7	549+96.34	72.24 LT	676.16	"M" IN MUELLER ON FIRE HYDRANT SE CORNER OF KATHY CT AND HIGHLAND RD
8	559+03.07	26.01 RT	679.07	"M" IN MUELLER ON FIRE HYDRANT SE CORNER OF LILAC DR AND TURPIN RD
9	565+60.91	87.95 RT	675.61	RR SPIKE IN POWER POLE NW CORNER OF SOUTH SHORES AND TURPIN RD.



REVISIONS		TIES AND BENCHMARKS		DRAWN BY DATE	
NO.	DATE	INITIALS	TURPIN ROAD CONNECTOR (CH 31) MACON COUNTY, ILLINOIS		EMR 8/03
1					CHECKED BY DATE GLF 03/05
2					BOOK NUMBER 471
3					PROJECT No. 4805
4					SHEET No.
5					
6					
7					
8					
9					
10					

**HOMER L.
CHASTAIN
& ASSOCIATES, LLP**
CONSULTING ENGINEERS
184-00197

DECATUR
(317) 422-8544
CHICAGO
(773) 714-0050