

ROUTE NO.	SECTION	COUNTY	TOTAL SHEETS	SHEET NO.
CH 31	*	MACON	162	25
STA.	TO STA.			
FED. RD. DIST. NO. 7	ILLINOIS	PROJECT		

* 02-00175-00-PV

DATE	BY

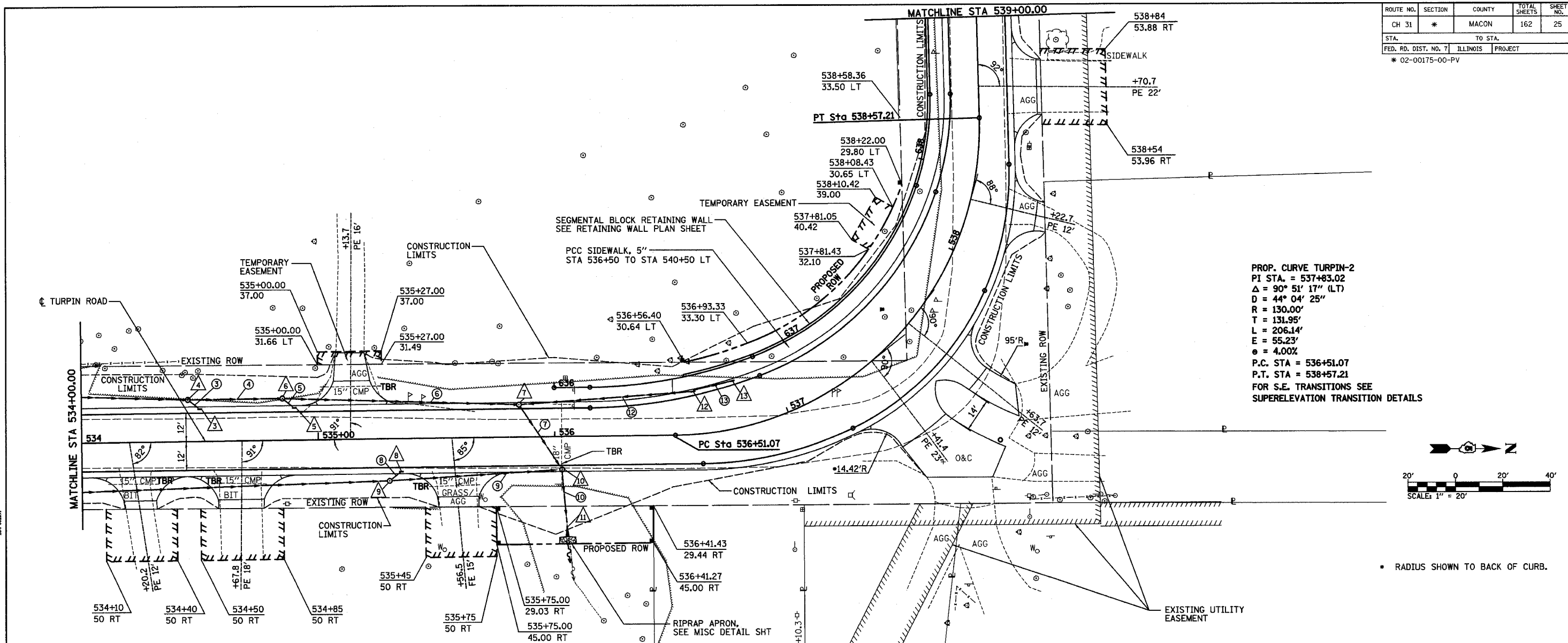
PLAN
SURVEYED
NOTED
ALIGNED
CHECKED
FIT. OF WAY
CHECKED
NO.

DECATUR
0317 425-8644
CHICAGO
0779 714-0060

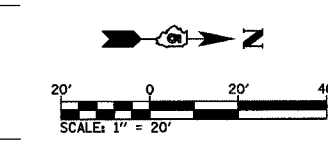
ROMER L.
CHASTAIN
& ASSOCIATES, LLP
CONSULTING ENGINEERS
14-00897

DATE	BY

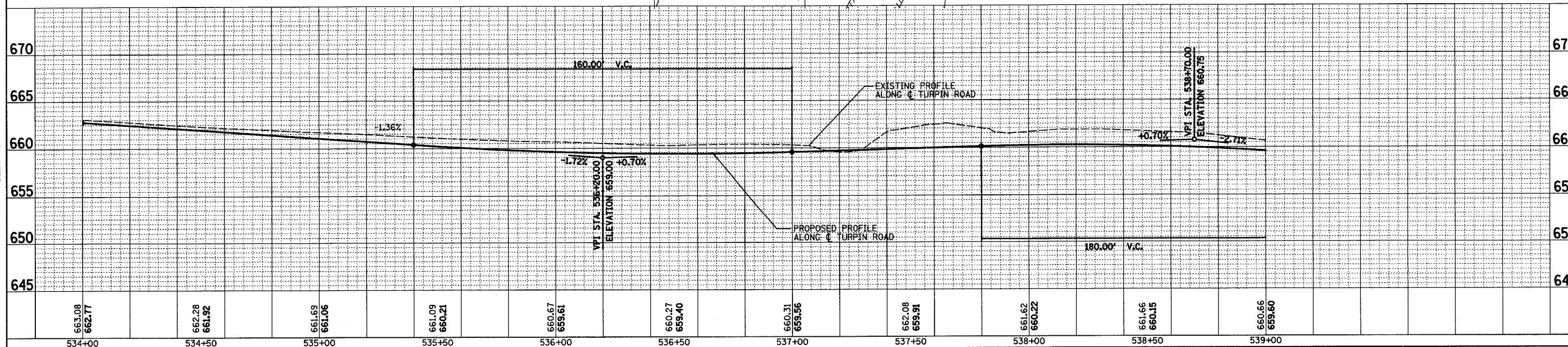
PROFILE
SURVEYED
NOTED
CHECKED
BY
STRUCTURE NOTATIONS
CIRD
NO.



PROP. CURVE TURPIN-2
 PI STA. = 537+83.02
 $\Delta = 90^\circ 51' 17''$ (LT)
 $D = 44^\circ 04' 25''$
 $R = 130.00'$
 $T = 131.95'$
 $L = 206.14'$
 $E = 55.23'$
 $\theta = 4.00\%$
 P.C. STA = 536+51.07
 P.T. STA = 538+57.21
 FOR S.E. TRANSITIONS SEE
 SUPERELEVATION TRANSITION DETAILS



• RADIUS SHOWN TO BACK OF CURB.



STA 534+00 TO STA 539+00