

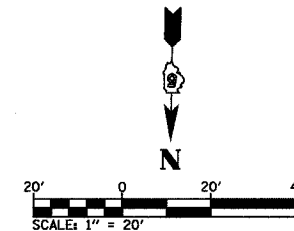
ROUTE NO.	SECTION	COUNTY	TOTAL SHEETS	SHEET NO.
CH 31	*	MACON	162	39
STA.		TO STA.		
FED. RD. DIST. NO. 7		ILLINOIS PROJECT		

* 02-00175-00-PV

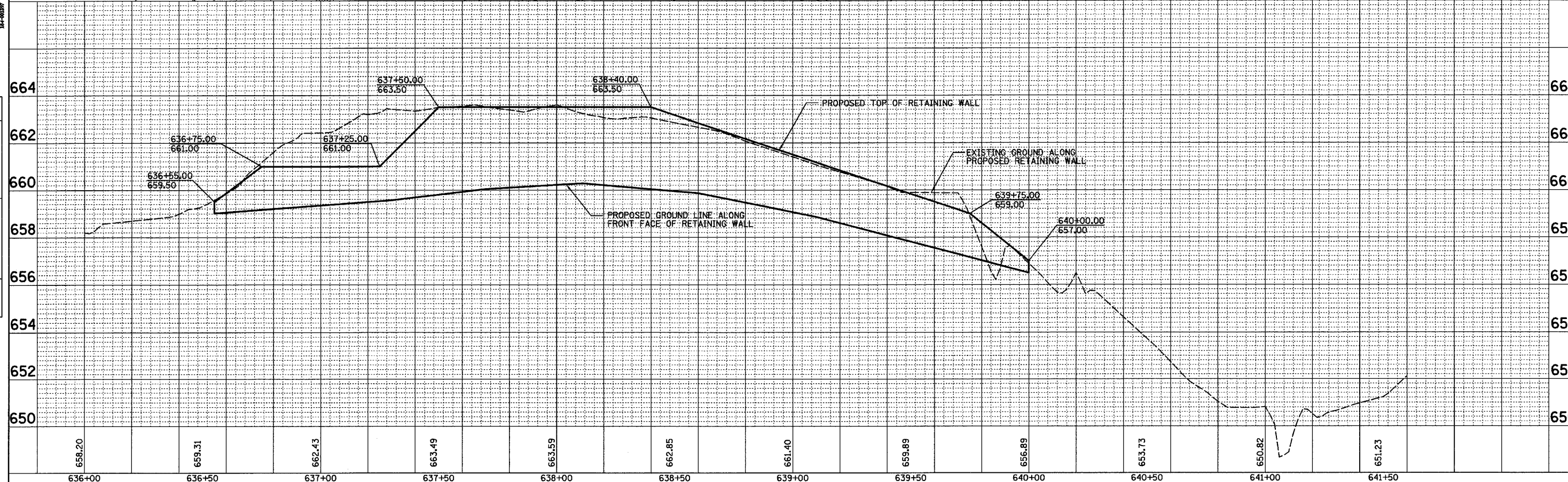
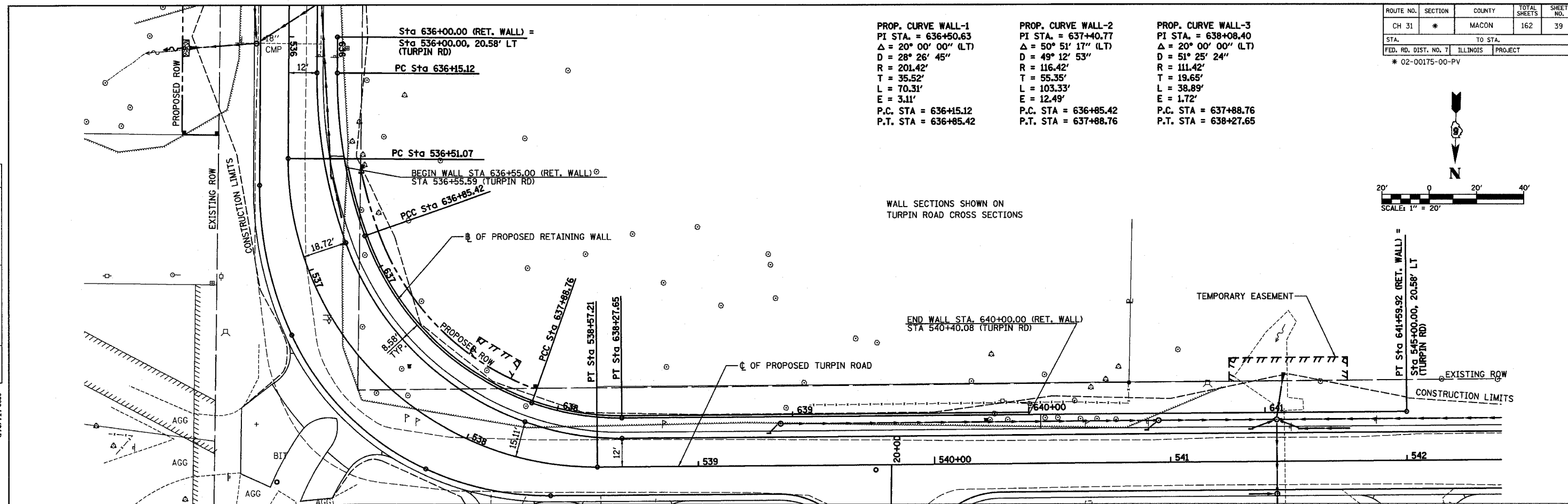
PROP. CURVE WALL-1
 PI STA. = 636+50.63
 $\Delta = 20^\circ 00' 00''$ (LT)
 $D = 28^\circ 26' 45''$
 $R = 201.42'$
 $T = 35.52'$
 $L = 70.31'$
 $E = 3.11'$
 P.C. STA = 636+15.12
 P.T. STA = 636+85.42

PROP. CURVE WALL-2
 PI STA. = 637+40.77
 $\Delta = 50^\circ 51' 17''$ (LT)
 $D = 49^\circ 12' 53''$
 $R = 116.42'$
 $T = 55.35'$
 $L = 103.33'$
 $E = 12.49'$
 P.C. STA = 636+85.42
 P.T. STA = 637+88.76

PROP. CURVE WALL-3
 PI STA. = 638+08.40
 $\Delta = 20^\circ 00' 00''$ (LT)
 $D = 51^\circ 25' 24''$
 $R = 111.42'$
 $T = 19.65'$
 $L = 38.89'$
 $E = 1.72'$
 P.C. STA = 637+88.76
 P.T. STA = 638+27.65



WALL SECTIONS SHOWN ON
 TURPIN ROAD CROSS SECTIONS



STA 636+00 TO STA 641+59.92 RETAINING WALL

PLAN

DATE	BY
SURVEYED	
NOTED	
CHECKED	
NO.	

DECATUR 0317 429-8644
 CHICAGO 0779 714-0060

HOMER L. CHASTAIN & ASSOCIATES, L.P.
 CONSULTING ENGINEERS
 14-0007

PROFILE

DATE	BY
SURVEYED	
NOTED	
CHECKED	
NO.	

STRUCTURE NOTATIONS CARD