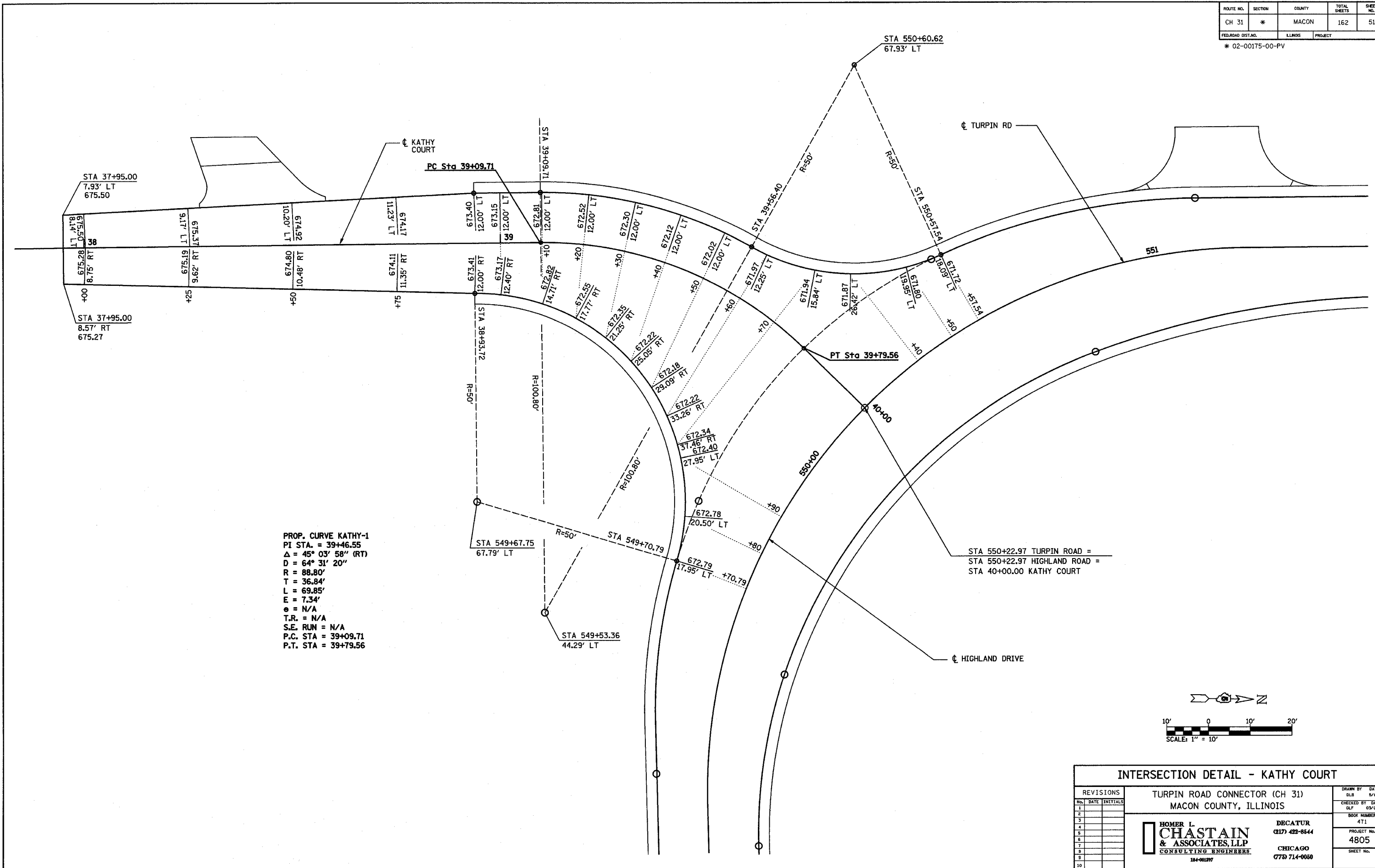


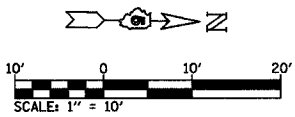
ROUTE NO.	SECTION	COUNTY	TOTAL SHEETS	SHEET NO.
CH 31	*	MACON	162	51

FED. ROAD DIST. NO. ILLINOIS PROJECT
* 02-00175-00-PV



PROP. CURVE KATHY-1
 PI STA. = 39+46.55
 $\Delta = 45^\circ 03' 58''$ (RT)
 $D = 64^\circ 31' 20''$
 $R = 88.80'$
 $T = 36.84'$
 $L = 69.85'$
 $E = 7.34'$
 $\theta = N/A$
 $T.R. = N/A$
 $S.E. RUN = N/A$
 $P.C. STA = 39+09.71$
 $P.T. STA = 39+79.56$

STA 550+22.97 TURPIN ROAD =
 STA 550+22.97 HIGHLAND ROAD =
 STA 40+00.00 KATHY COURT



REVISIONS		TURPIN ROAD CONNECTOR (CH 31) MACON COUNTY, ILLINOIS		DRAWN BY	DATE
NO.	DATE	INITIALS		DLB	5/04
1				CHECKED BY	DATE
2				GLF	03/05
3				BOOK NUMBER	471
4				PROJECT NO.	4805
5				SHEET NO.	
6					
7					
8					
9					
10					

HOMER L. CHASTAIN & ASSOCIATES, LLP
CONSULTING ENGINEERS

DECATUR
(217) 422-8444

CHICAGO
(773) 714-0050