

F.A.P. RTE.	SECTION	COUNTY	TOTAL SHEETS	SHEET NO.
322	11-10	CHRISTIAN	310	1

CONTRACT # 92677

STATE OF ILLINOIS
DEPARTMENT OF TRANSPORTATION
DIVISION OF HIGHWAYS

**PROPOSED
HIGHWAY PLANS**

FAP ROUTE 322 (US 51)
SECTION 11-10
PROJECT: NHF-0322(074)
FOUR LANE EXPRESSWAY – PARTIAL ACCESS CONTROL
CHRISTIAN COUNTY
C-96-516-04

FOR INDEX OF SHEETS, SEE SHEET NO. 2

DESIGN DESIGNATION:

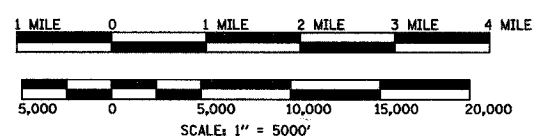
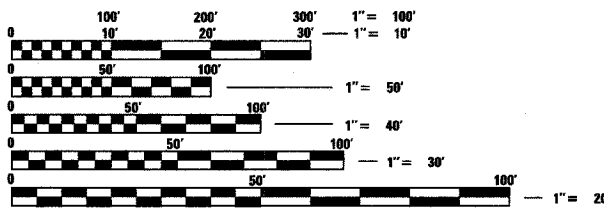
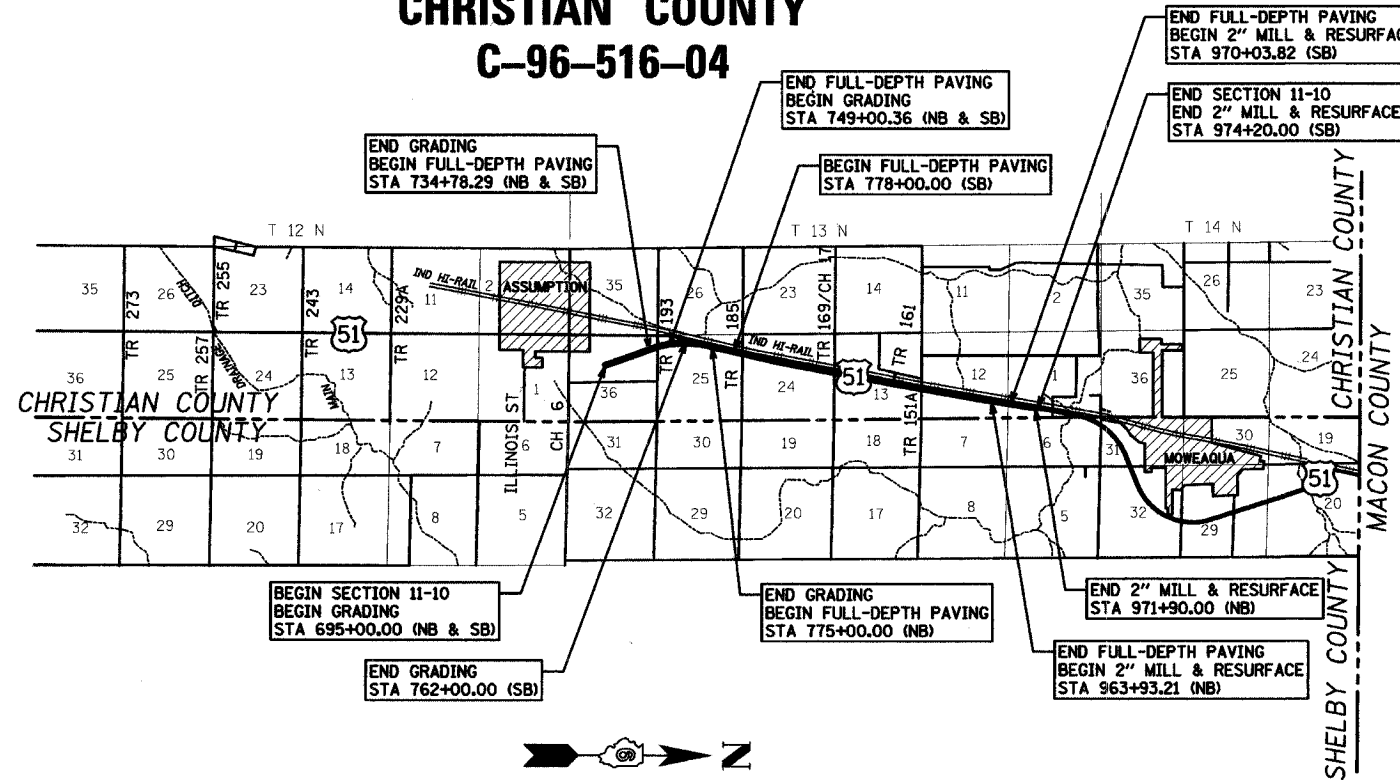
FAP 322 (ARTERIAL)
ADT = 4,650 (2003)
% SU = 3
% MU = 10

TR 193 (COLLECTOR)
ADT = 125 (2003)

TR 185 (COLLECTOR)
ADT = 50(2003)

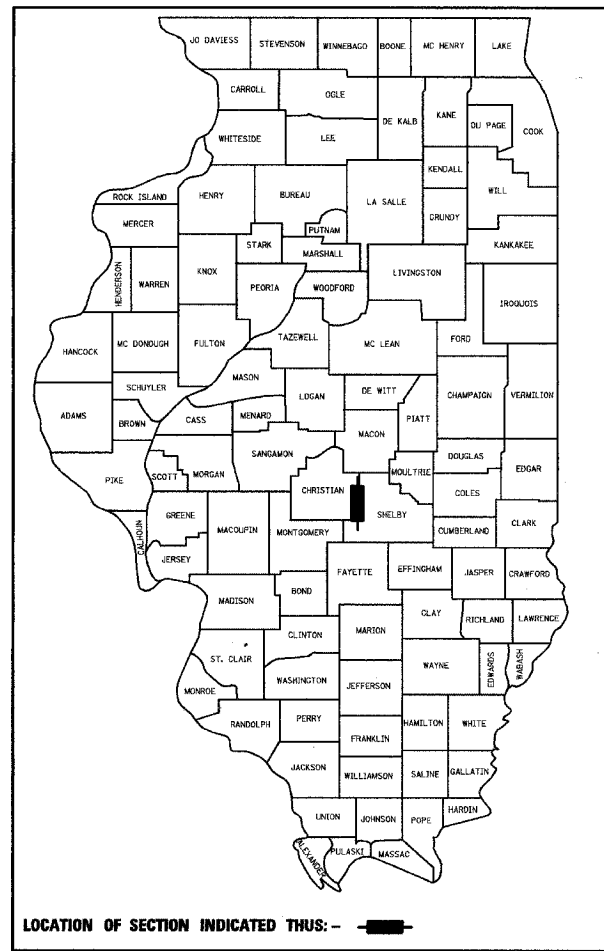
TR 169/CH 17 (COLLECTOR)
ADT = 125(2003)

TR 151A (COLLECTOR)
ADT = 250(2003)



LOCATION MAP
GROSS LENGTH OF SECTION 11-10 = 27,690 ft = 5.24 miles
NET LENGTH OF SECTION 11-10 = 27,690 ft = 5.24 miles

D-96-533-01



STATE OF ILLINOIS
DEPARTMENT OF TRANSPORTATION
DIVISION OF HIGHWAYS

SUBMITTED April 2005
Deputy Director of Highways, Region Engineer

May 13, 2005
Engineer of Design and Environment

May 13, 2005
Director of Highways, Chief Engineer

FULL SIZE PLANS HAVE BEEN PREPARED USING STANDARD ENGINEERING SCALES, REDUCED SIZED PLANS WILL NOT CONFORM TO STANDARD SCALES, IN MAKING MEASUREMENTS ON REDUCED PLANS, THE ABOVE SCALES MAY BE USED.

J.U.L.I.E.
JOINT UTILITY LOCATION INFORMATION FOR EXCAVATION
1-800-892-0123

CONTRACT NO. 92677

PLANS PREPARED BY:
KLINGNER & ASSOCIATES, P.C.
Engineers / Architects
616 North 24th Street (217) 223-3670
Quincy, Illinois 62301 FAX: 223-3603
Internet Address: www.klingner.com
STATE OF ILLINOIS DESIGN FIRM # 1842738

STEVE E. BANGE
REGISTERED PROFESSIONAL ENGINEER
STATE OF ILLINOIS NO. 062-053338
LICENSE EXPIRES NOVEMBER 30, 2005

**PRINTED BY THE AUTHORITY
OF THE STATE OF ILLINOIS**

PROJECT ENGINEER: SAL MADONIA (217) 782-4161
SQUAD LEADER: KIM ZUMMO (217) 782-8728
FILE: I:\es\010329\Ncr-thr\Plans\001\cover.dgn