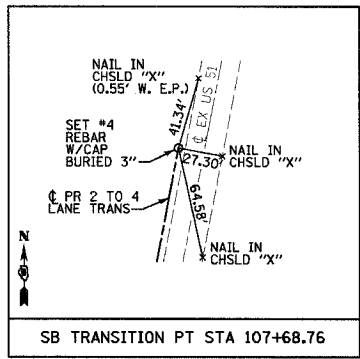
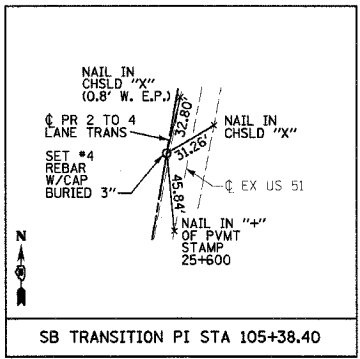
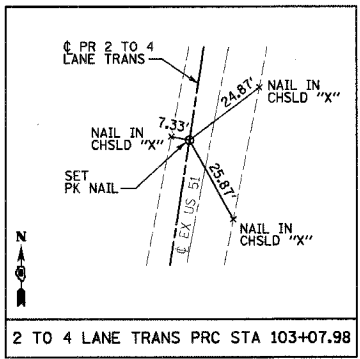
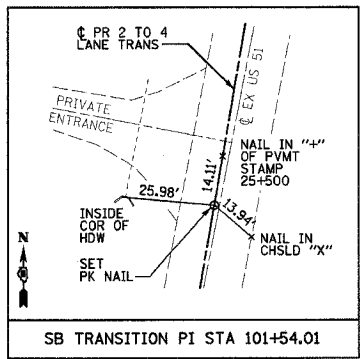
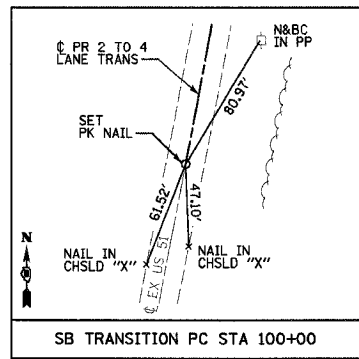
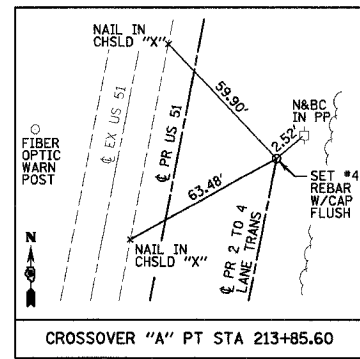
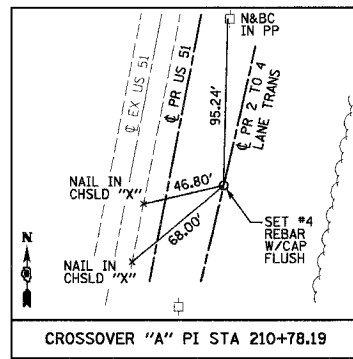
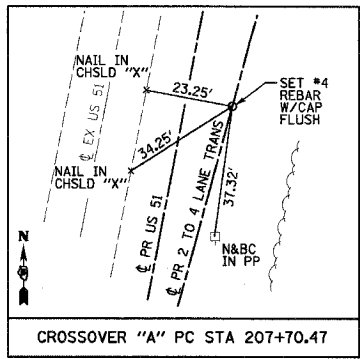
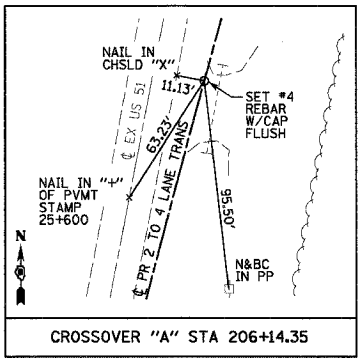
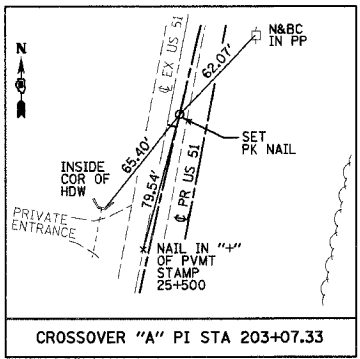
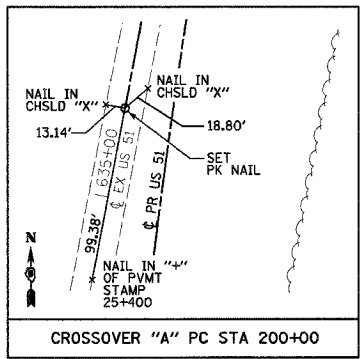
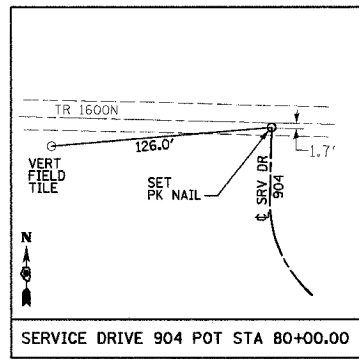
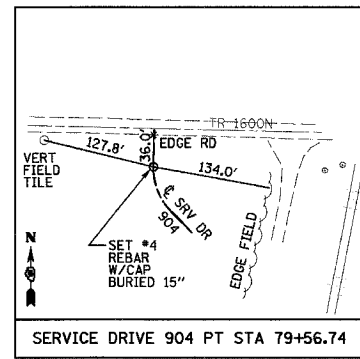
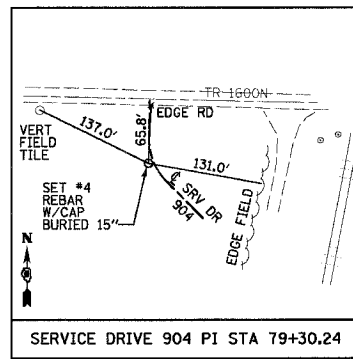
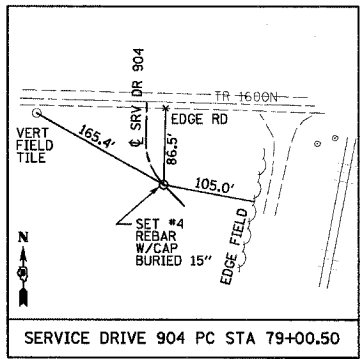
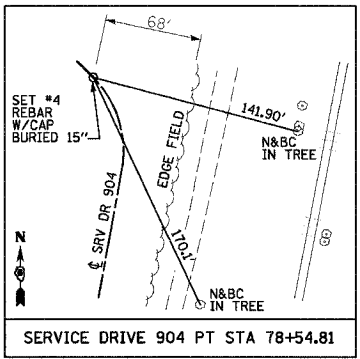
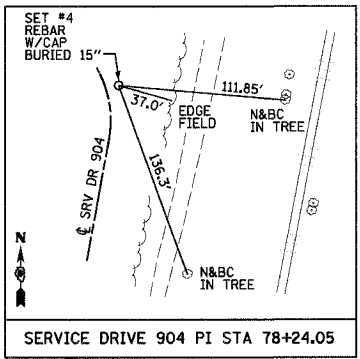
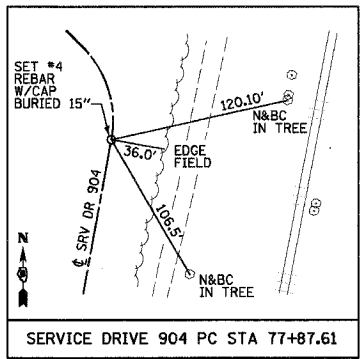
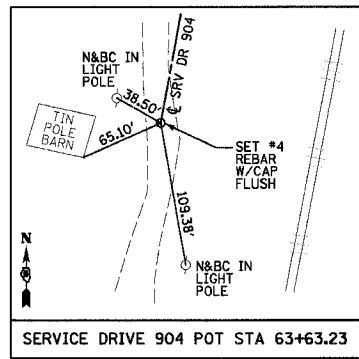
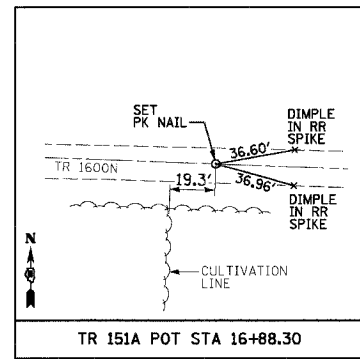
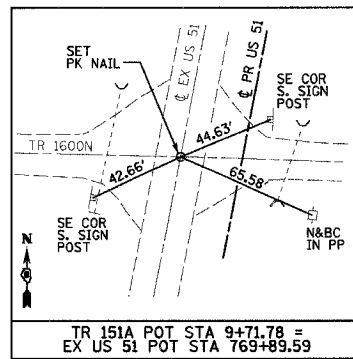
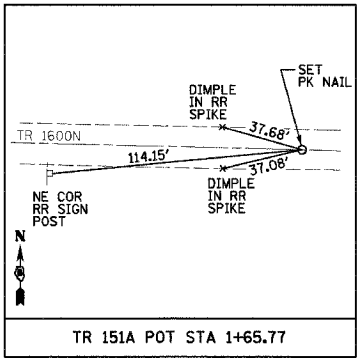
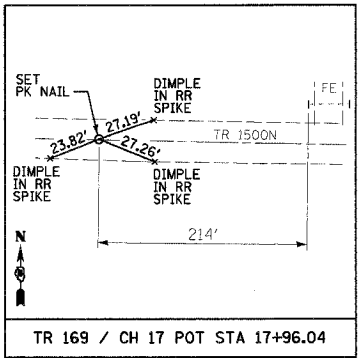
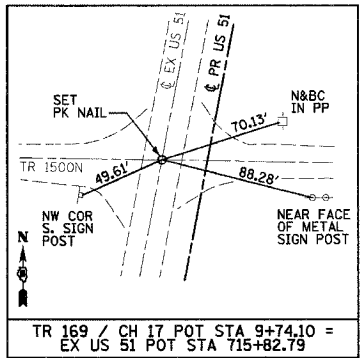
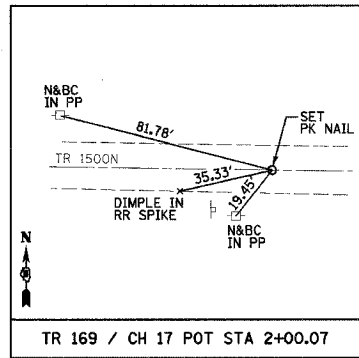
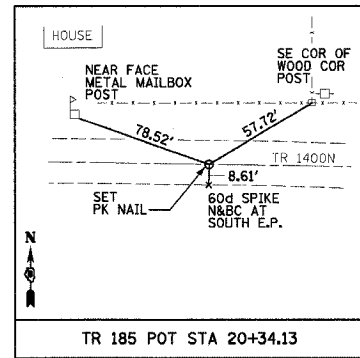
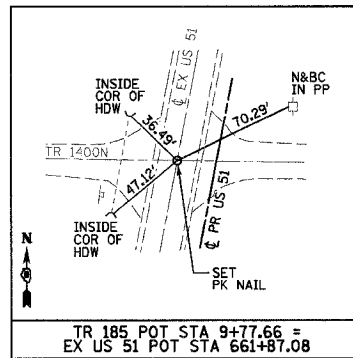


F.A.P. RTE.	SECTION	COUNTY	TOTAL SHEETS	SHEET NO.
322	11-10	CHRISTIAN	310	36
STA.		TO STA.		
FED. ROAD DIST. NO.		ILLINOIS FED. AID PROJECT		



3/21/2005

\\blj\lan\blj\23\work\chsl\hans\RB6\aebl.dwg

REVISIONS	
NAME	DATE

ILLINOIS DEPARTMENT OF TRANSPORTATION
 HORIZONTAL CONTROL TIES
 FAP 322 (US 51)
 SECTION 11-1
 CHRISTIAN COUNTY
 SCALE: NONE DRAWN BY: BLJ
 DATE: 3/17/05 CHECKED BY: SEB