

NW 1/4 SEC 36, T13N, R1E, 3RD PM

SEE SHEET 72 FOR TR 193 PLAN AND PROFILE  
SEE SHEET 104 FOR TR 193 INTERSECTION GEOMETRICS

SW 1/4 SEC 25, T13N, R1E, 3RD PM

F.A.P. RTE.	SECTION	COUNTY	TOTAL SHEET SHEETS NO.
322	11-10	CHRISTIAN	310 54
STA. TO STA.		ILLINOIS FED. AID PROJECT	
FED. ROAD DIST. NO.			

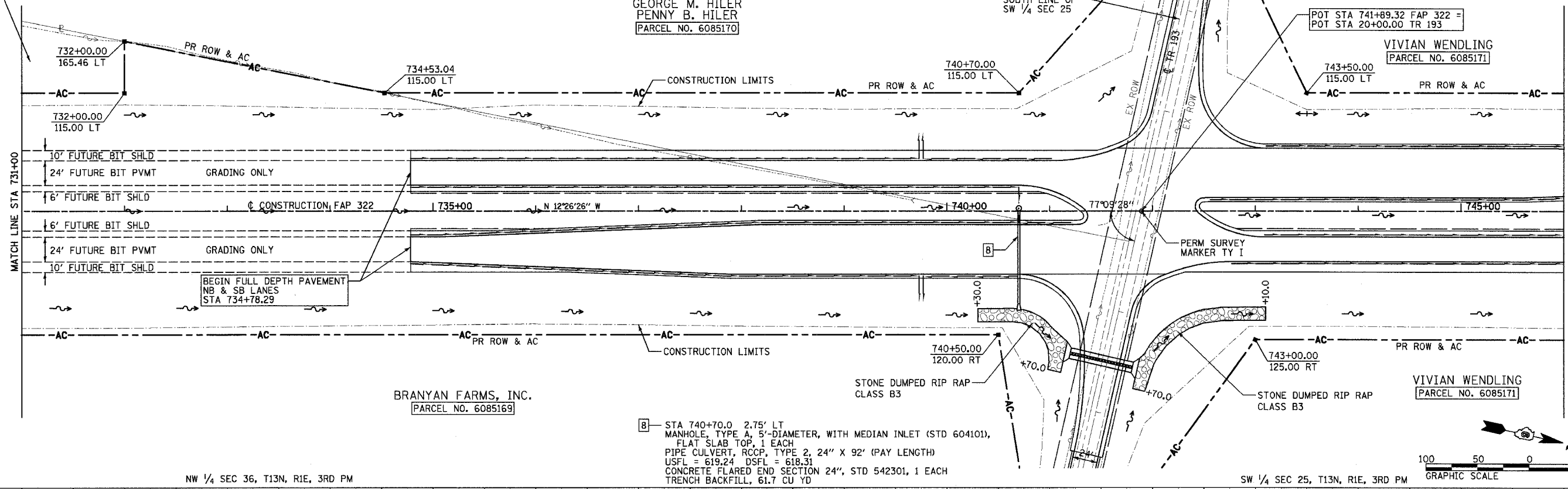
BRANYAN FARMS, INC.  
PARCEL NO. 6085169

GEORGE M. HILER  
PENNY B. HILER  
PARCEL NO. 6085170

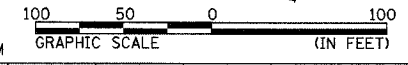
VIVIAN WENDLING  
PARCEL NO. 6085171

BRANYAN FARMS, INC.  
PARCEL NO. 6085169

VIVIAN WENDLING  
PARCEL NO. 6085171

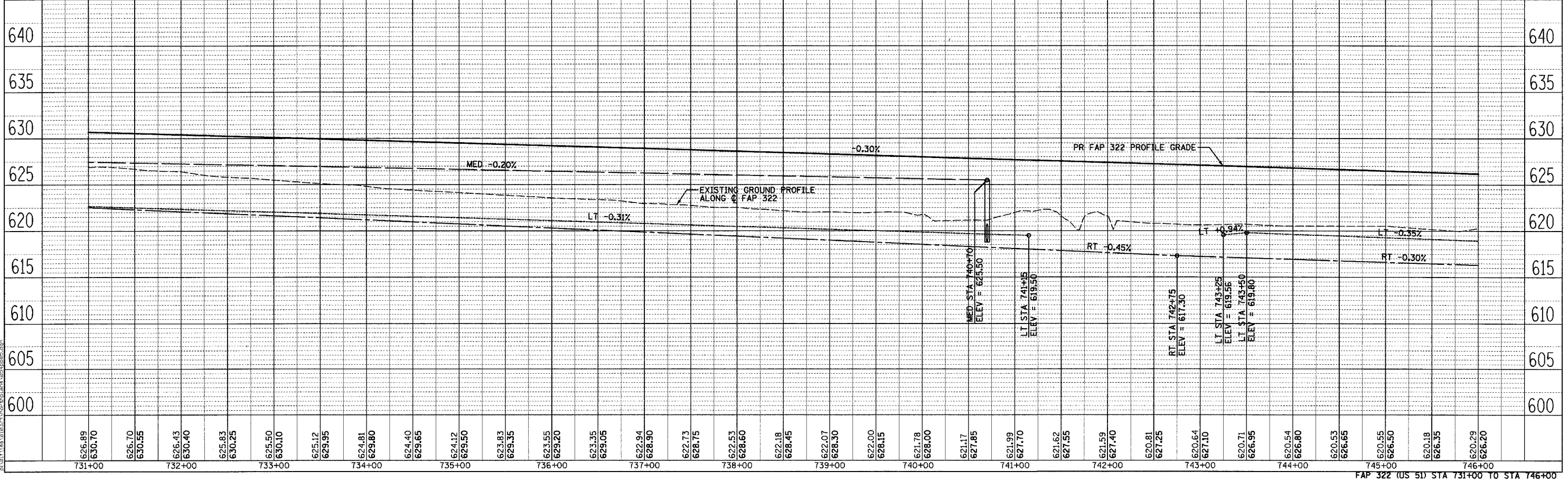


ⓑ STA 740+70.0 2.75' LT MANHOLE, TYPE A, 5'-DIAMETER, WITH MEDIAN INLET (STD 604101), FLAT SLAB TOP, 1 EACH  
 PIPE CULVERT, RCCP, TYPE 2, 24" X 92" (PAY LENGTH)  
 USFL = 619.24 DSFL = 618.31  
 CONCRETE FLARED END SECTION 24", STD 542301, 1 EACH  
 TRENCH BACKFILL, 61.7 CU YD



NW 1/4 SEC 36, T13N, R1E, 3RD PM

SW 1/4 SEC 25, T13N, R1E, 3RD PM



FAP 322 (US 51) STA 731+00 TO STA 746+00

PLAN	DATE	BY
SURVEYED		
PLOTTED		
CHECKED		
RT. OF WAY CHECKED		
NOTE BOOK		
NO.		
CADD FILE NAME		

PROFILE	DATE	BY
SURVEYED		
PLOTTED		
CHECKED		
B.M. NOTED		
STRUCTURE NOTATIONS CHKD		

3/29/2005

\\n:\data\010224\user\tholana\254\p086.dwg