

F.A.P. RTE.	SECTION	COUNTY	TOTAL SHEETS	SHEET NO.
322	11-10	CHRISTIAN	310	60
STA.		TO STA.		
FED. ROAD DIST. NO.		ILLINOIS	FED. AID PROJECT	

SW 1/4 SEC 24, T13N, R1E, 3RD PM

NW 1/4 SEC 24, T13N, R1E, 3RD PM

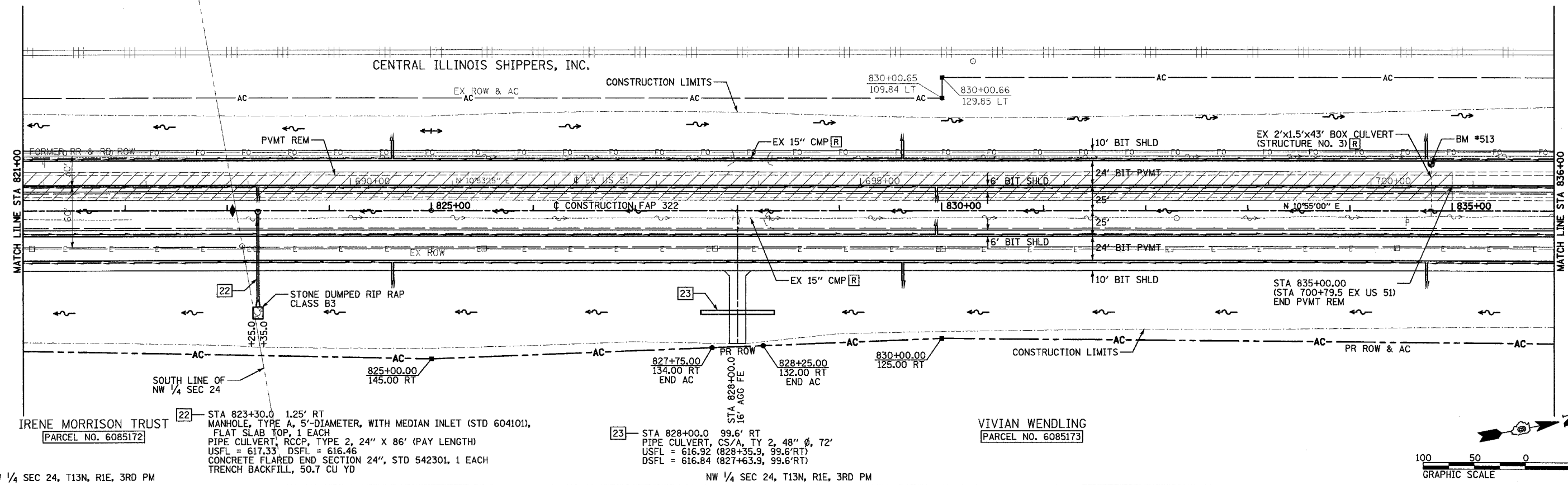
STA 823+05.1
DITCH CHECK, STD 202001
TOP EL = 624.94

CENTRAL ILLINOIS SHIPPERS, INC.

CONSTRUCTION LIMITS

830+00.65
109.84 LT

830+00.66
129.85 LT



SOUTH LINE OF
NW 1/4 SEC 24

IRENE MORRISON TRUST
[PARCEL NO. 6085172]

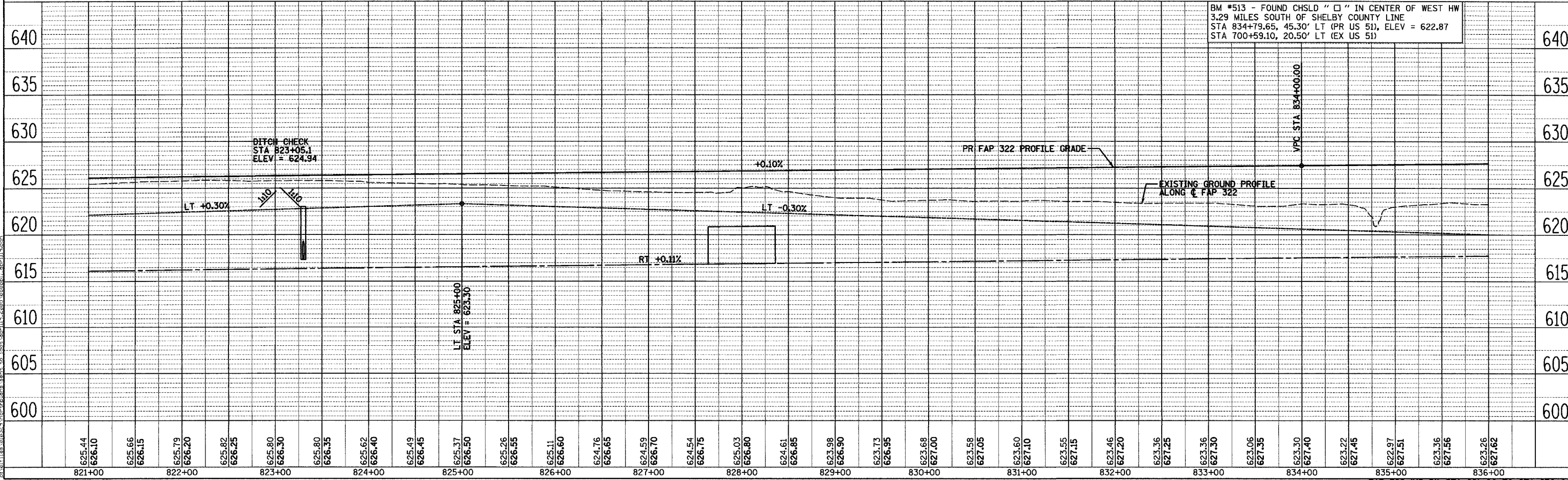
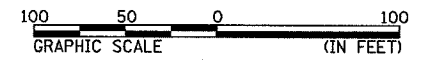
22 - STA 823+30.0 1.25' RT
MANHOLE, TYPE A, 5'-DIAMETER, WITH MEDIAN INLET (STD 604101),
FLAT SLAB TOP, 1 EACH
PIPE CULVERT, RCCP, TYPE 2, 24" X 86' (PAY LENGTH)
USFL = 617.33, DSFL = 616.46
CONCRETE FLARED END SECTION 24", STD 542301, 1 EACH
TRENCH BACKFILL, 50.7 CU YD

23 - STA 828+00.0 99.6' RT
PIPE CULVERT, CS/A, TY 2, 48" Ø, 72'
USFL = 616.92 (828+35.9, 99.6' RT)
DSFL = 616.84 (827+63.9, 99.6' RT)

VIVIAN WENDLING
[PARCEL NO. 6085173]

SW 1/4 SEC 24, T13N, R1E, 3RD PM

NW 1/4 SEC 24, T13N, R1E, 3RD PM



BM #513 - FOUND CHSLD "C" IN CENTER OF WEST HW
3.29 MILES SOUTH OF SHELBY COUNTY LINE
STA 834+79.65, 45.30' LT (PR US 51), ELEV = 622.87
STA 700+59.10, 20.50' LT (EX US 51)

SURVEYED
PLOTTED
CHECKED
BY
DATE
NO.

SURVEYED
PLOTTED
CHECKED
BY
DATE
NO.

4/28/2006
 04:01:11.000329\ncor\p\plan\sw_1_4_sec_24_t13n_r1e_3rd_pm.dwg