

SE 1/4 SEC 1, T13N, R1E, 3RD PM

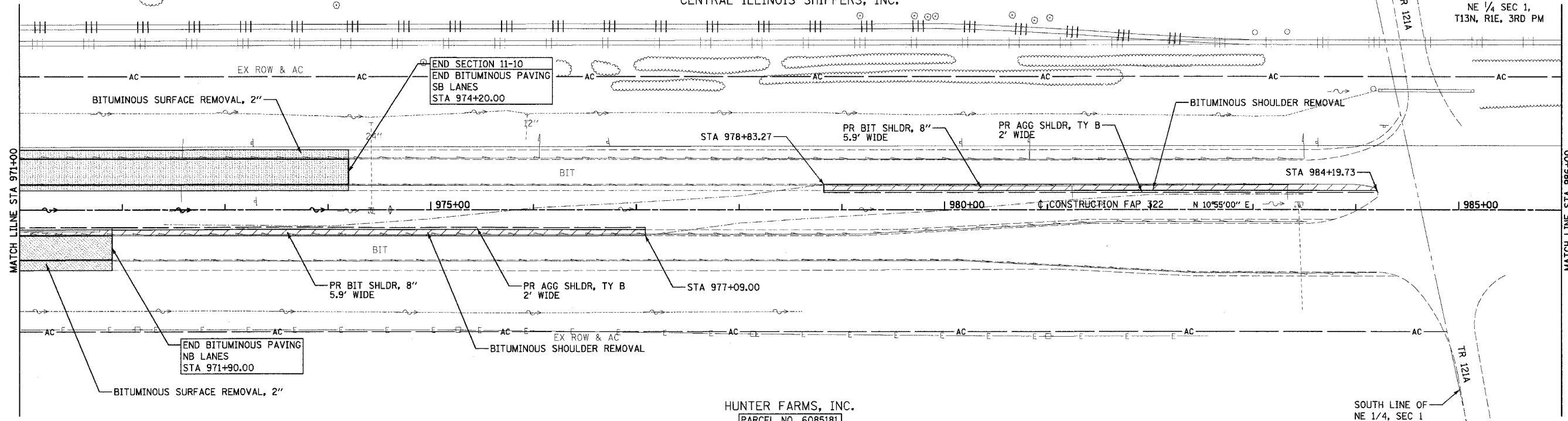
F.A.P. RTE.	SECTION	COUNTY	TOTAL SHEETS	SHEET NO.
322	11-10	CHRISTIAN	310	70
STA.		TO STA.		
FED. ROAD DIST. NO.		ILLINOIS FED. AID PROJECT		

NE 1/4 SEC 1, T13N, R1E, 3RD PM

CENTRAL ILLINOIS SHIPPERS, INC.

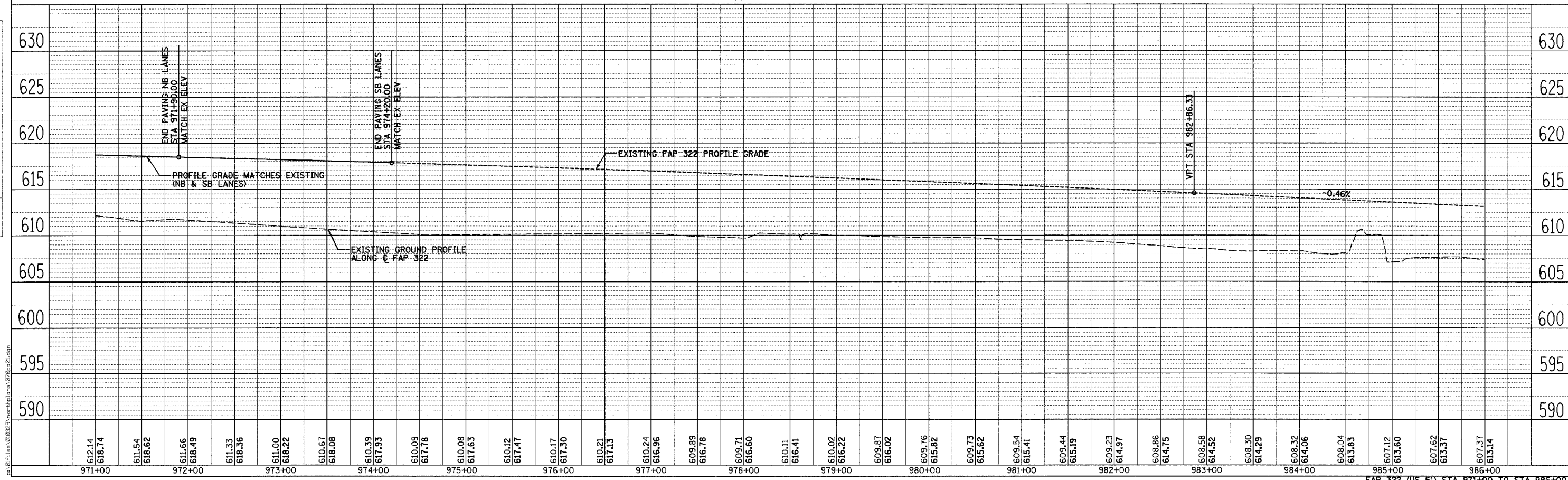
HUNTER FARMS, INC.  
PARCEL NO. 6085181

SE 1/4 SEC 1, T13N, R1E, 3RD PM



DATE	
BY	
SURVEYED	
ALIGNED	
GRADES CHECKED	
CONSTRUCTION NOTES	
NO.	

DATE	
BY	
PROF. FILE	
NO.	



FAP 322 (US 51) STA 971+00 TO STA 986+00