

NW 1/4 SEC 13, T13N, R1E, 3RD PM

SD904 #1 CURVE DATA:

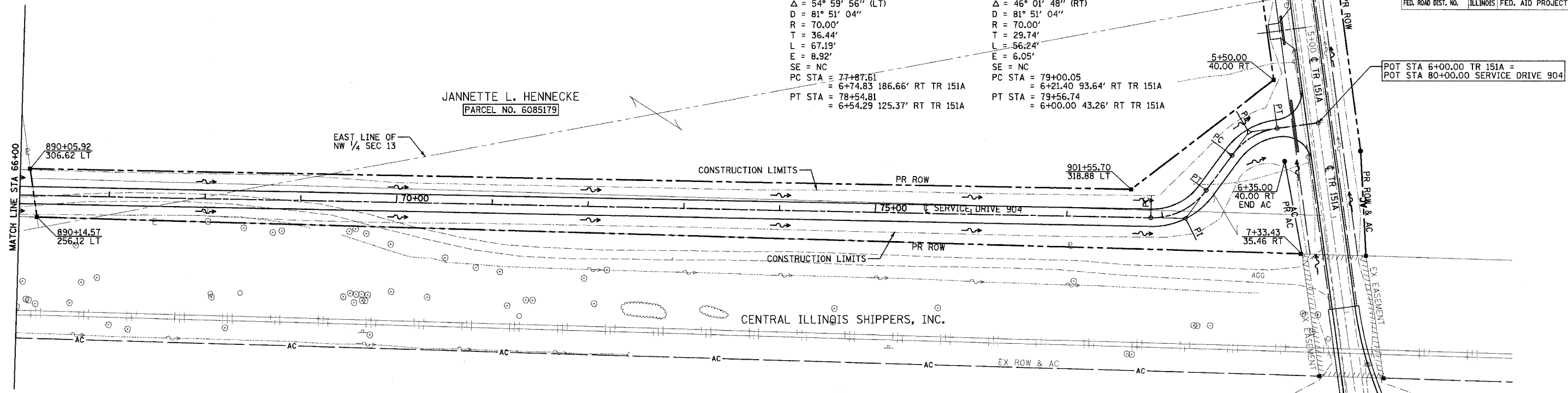
PI STA = 78+24.05
 = 6+80.51 150.67' RT TR 151A
 $\Delta = 54^\circ 59' 56''$ (LT)
 $D = 81^\circ 51' 04''$
 $R = 70.00'$
 $T = 36.44'$
 $L = 67.19'$
 $E = 8.92'$
 $SE = NC$
 $PC STA = 77+87.61$
 $= 6+74.83 186.66' RT TR 151A$
 $PT STA = 78+54.81$
 $= 6+54.29 125.37' RT TR 151A$

SD904 #2 CURVE DATA:

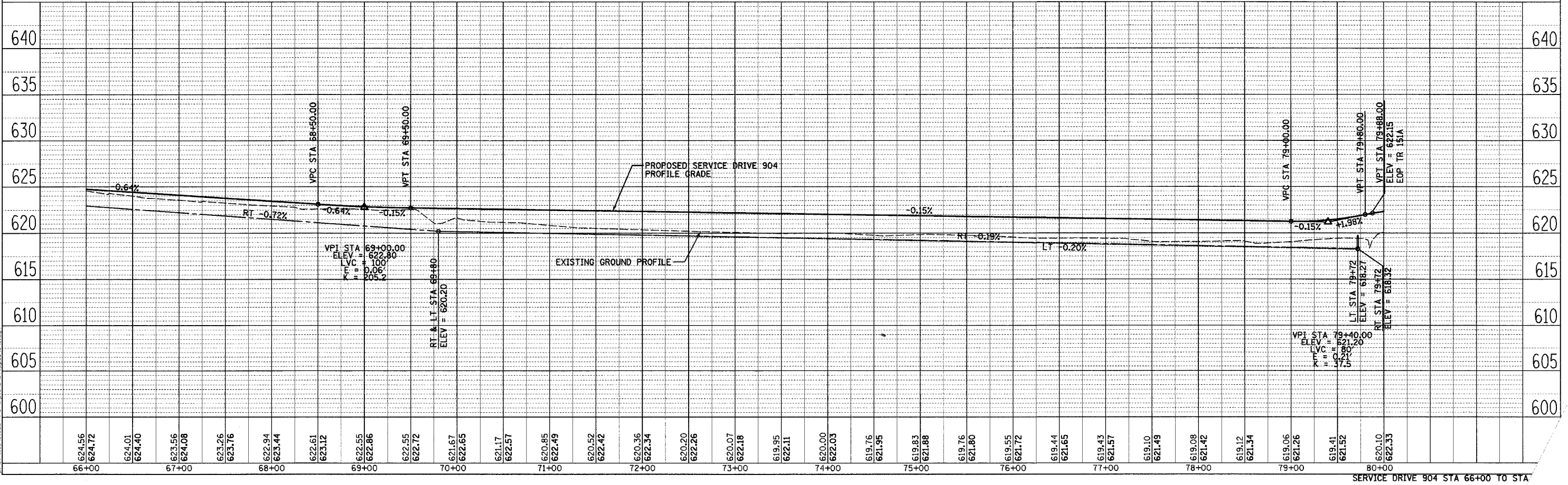
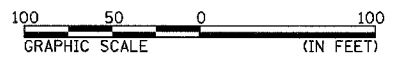
PI STA = 79+30.24
 = 6+00.00 73.00' RT TR 151A
 $\Delta = 46^\circ 01' 48''$ (RT)
 $D = 81^\circ 51' 04''$
 $R = 70.00'$
 $T = 29.74'$
 $L = 56.24'$
 $E = 6.05'$
 $SE = NC$
 $PC STA = 79+00.05$
 $= 6+21.40 93.64' RT TR 151A$
 $PT STA = 79+56.74$
 $= 6+00.00 43.26' RT TR 151A$

F.A.P. RTE.	SECTION	COUNTY	TOTAL SHEETS	SHEET NO.
322	11-10	CHRISTIAN	310	78
STA.		TO STA.		
FED. ROAD DIST. NO.		ILLINOIS		FED. AID PROJECT

JANNETTE L. HENNECKE
 PARCEL NO. 6085179



NE 1/4 SEC 13, T13N, R1E, 3RD PM



PLAN	DATE
SURVEYED	
ALIGNED	
CHECKED	
BY	
NO.	

PROFILE	DATE
SURVEYED	
GRADES	
CHECKED	
BY	
NO.	

P:\M\F\11as\01224\11as\11as.dwg 12/29/2005 12:29:58 PM