

STATE OF ILLINOIS
DEPARTMENT OF TRANSPORTATION

F.A.P. RTE.	SECTION	COUNTY	TOTAL SHEETS	SHEET NO.
322	11-1	CHRISTIAN	310	82
STA.		TO STA.		
FED. ROAD DIST. NO.	ILLINOIS	FED. AID PROJECT		

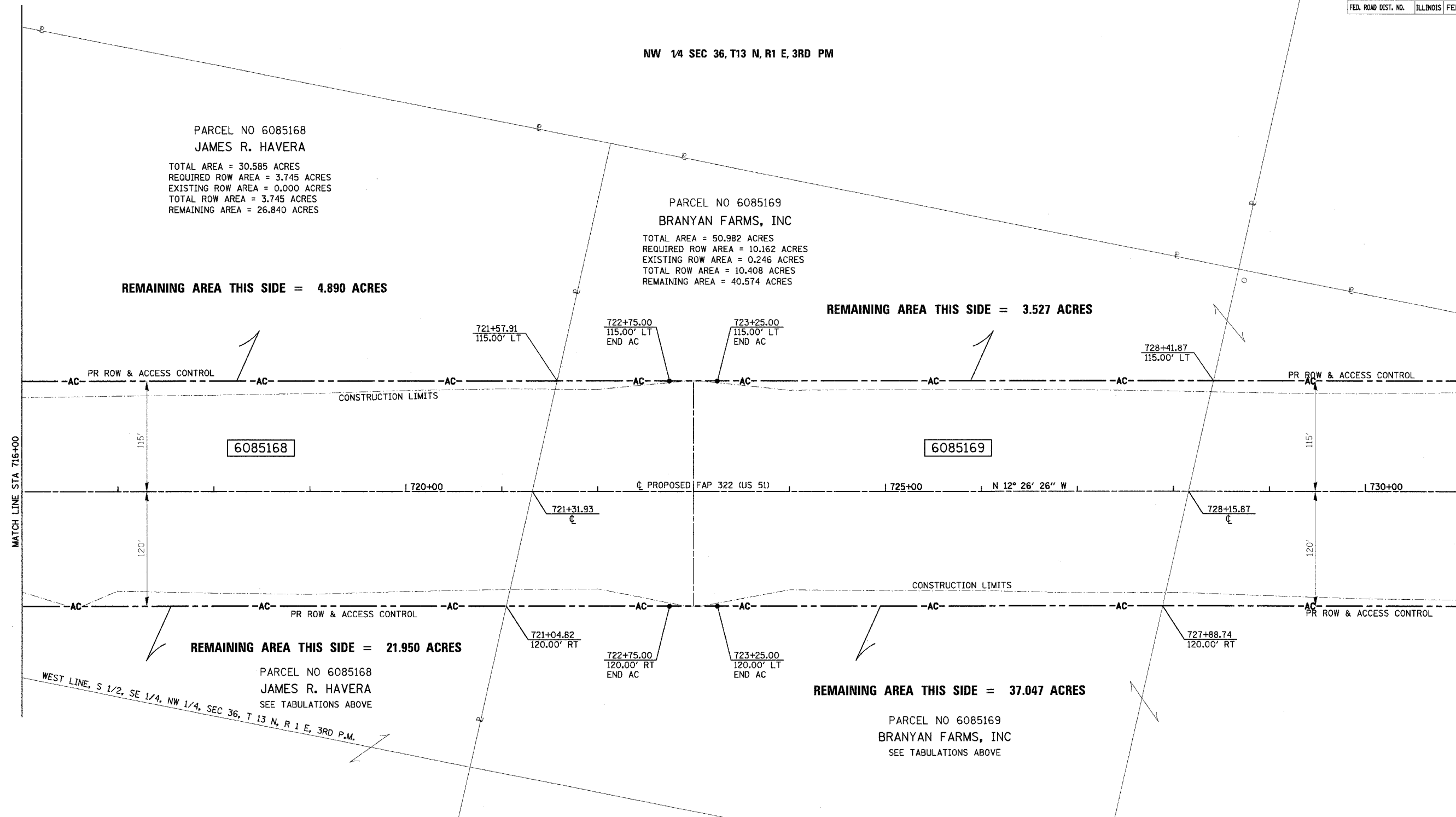
NW 1/4 SEC 36, T13 N, R1 E, 3RD PM

PARCEL NO 6085168
 JAMES R. HAVERA
 TOTAL AREA = 30.585 ACRES
 REQUIRED ROW AREA = 3.745 ACRES
 EXISTING ROW AREA = 0.000 ACRES
 TOTAL ROW AREA = 3.745 ACRES
 REMAINING AREA = 26.840 ACRES

PARCEL NO 6085169
 BRANYAN FARMS, INC
 TOTAL AREA = 50.982 ACRES
 REQUIRED ROW AREA = 10.162 ACRES
 EXISTING ROW AREA = 0.246 ACRES
 TOTAL ROW AREA = 10.408 ACRES
 REMAINING AREA = 40.574 ACRES

REMAINING AREA THIS SIDE = 4.890 ACRES

REMAINING AREA THIS SIDE = 3.527 ACRES



MATCH LINE STA 716+00

MATCH LINE STA 731+00

REMAINING AREA THIS SIDE = 21.950 ACRES

REMAINING AREA THIS SIDE = 37.047 ACRES

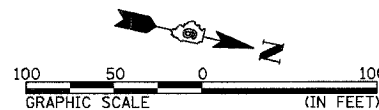
PARCEL NO 6085168
 JAMES R. HAVERA
 SEE TABULATIONS ABOVE
 WEST LINE, S 1/2, SE 1/4, NW 1/4, SEC 36, T 13 N, R 1 E, 3RD P.M.

PARCEL NO 6085169
 BRANYAN FARMS, INC
 SEE TABULATIONS ABOVE

NW 1/4 SEC 36, T13 N, R1 E, 3RD PM

NOTES:
 BEARINGS ARE BASED ON THE ILLINOIS STATE PLANE
 COORDINATE SYSTEM, NAD83 1986 - WEST ZONE
 SURVEYED IN ENGLISH.

PLAT DISTANCES AND STATIONING ARE IN GRID ENGLISH.
 TO CONVERT TO GROUND DIVIDE BY GRID FACTOR.
 GRID FACTOR = 1.00003150



RIGHT OF WAY PLANS

ROUTE F.A.P. 322 (US 51)
 SECTION 11-1
 PROJECT
 COUNTY CHRISTIAN
 JOB NO. R-96-008-95
 STA 716+00 TO STA 731+00
 SCALE 1 = 50'

SHEET NO. 4 OF 24