

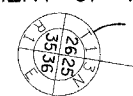
STATE OF ILLINOIS
DEPARTMENT OF TRANSPORTATION

F.A.P. RTE.	SECTION	COUNTY	TOTAL SHEETS	SHEET NO.
322	11-1	CHRISTIAN	310	84
STA.		TO STA.		
FED. ROAD DIST. NO.	ILLINOIS FED. AID PROJECT			

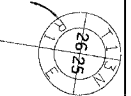
SW 1/4 SEC 25, T13 N, R1 E, 3RD PM

PARCEL NO 6085171
 VIVIAN WENDLING
 TOTAL AREA = 51.156 ACRES
 REQUIRED ROW AREA = 10.195 ACRES
 EXISTING ROW AREA = 0.617 ACRES
 TOTAL ROW AREA = 10.812 ACRES
 REMAINING AREA = 40.344 ACRES

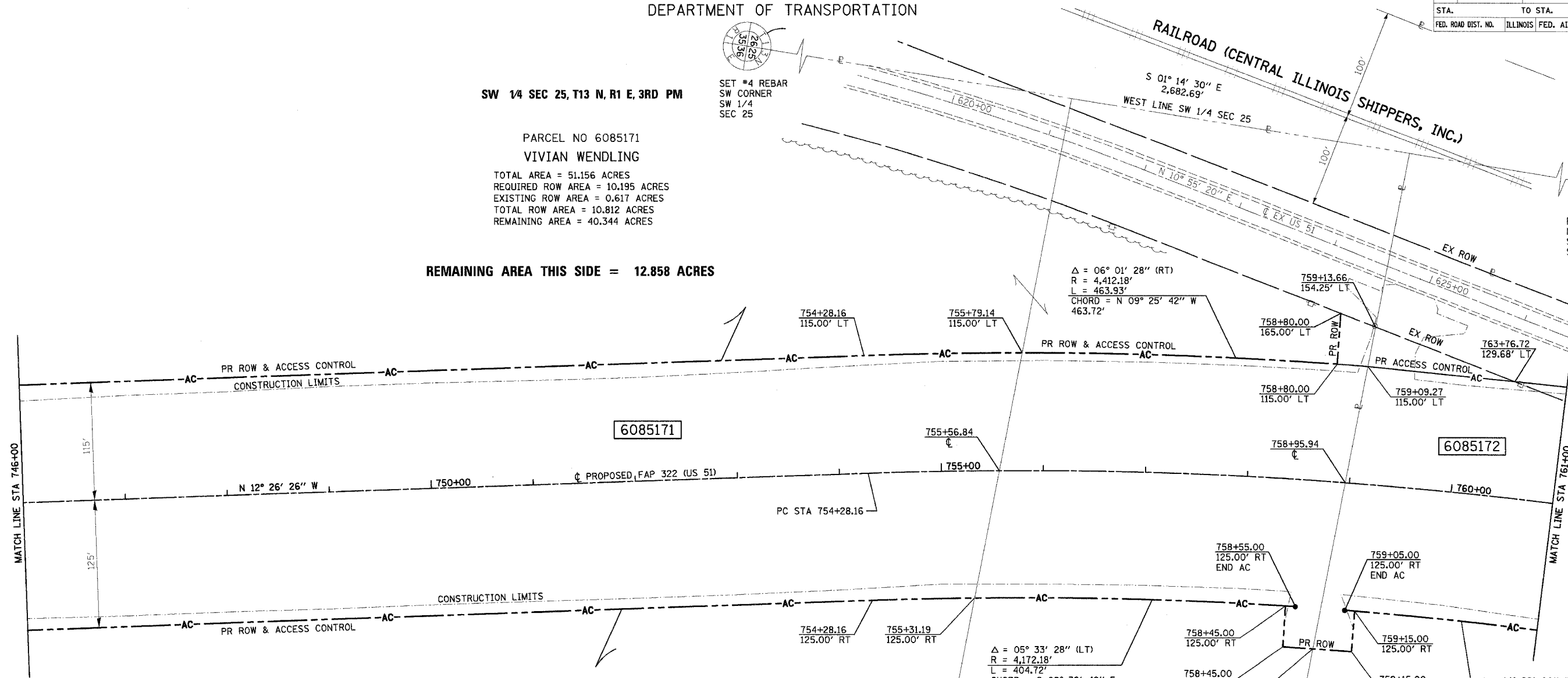
REMAINING AREA THIS SIDE = 12.858 ACRES



SET #4 REBAR
 SW CORNER
 SW 1/4
 SEC 25



FOUND STONE
 NW CORNER
 SW 1/4
 SEC 25



6085171

6085172

REMAINING AREA THIS SIDE = 27.486 ACRES

PARCEL NO 6085171
 VIVIAN WENDLING
 SEE TABULATIONS ABOVE

SW 1/4 SEC 25, T13 N, R1 E, 3RD PM

PROP CURVE 3-P
 PI STA = 763+16.39
 $\Delta = 23^\circ 21' 26''$ (RT)
 D = $1^\circ 20' 00''$
 R = 4,297.18'
 T = 888.23'
 L = 1,751.79'
 E = 90.84'
 SE = 4.2%
 PC STA = 754+28.16
 PT STA = 771+79.95
 SE ATTAINED STA 752+61 TO STA 754+91
 SE REMOVED STA 771+17 TO STA 773+47

PARCEL NO 6085172
 IRENE MORRISON TRUST
 FOR TABULATIONS SEE SHEET 7

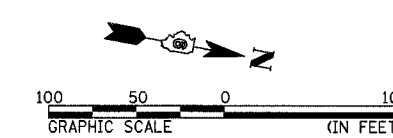
RIGHT OF WAY PLANS

ROUTE F.A.P. 322 (US 51)
 SECTION 11-1
 PROJECT
 COUNTY CHRISTIAN
 JOB NO. R-96-008-95
 STA 746+00 TO STA 761+00
 SCALE 1 = 50'

SHEET NO. 6 OF 24

NOTES:
 BEARINGS ARE BASED ON THE ILLINOIS STATE PLANE
 COORDINATE SYSTEM, NAD83 1986 - WEST ZONE
 SURVEYED IN ENGLISH.

PLAT DISTANCES AND STATIONING ARE IN GRID ENGLISH.
 TO CONVERT TO GROUND DIVIDE BY GRID FACTOR.
 GRID FACTOR = 1.00003150



4/21/2005 3:21/2005