

STATE OF ILLINOIS
DEPARTMENT OF TRANSPORTATION

F.A.P. RTE.	SECTION	COUNTY	TOTAL SHEETS	SHEET NO.
322	11-1	CHRISTIAN	310	101
STA.		TO STA.		
FED. ROAD DIST. NO.		ILLINOIS FED. AID PROJECT		

SW 14 SEC 13, T13 N, R1 E, 3RD PM

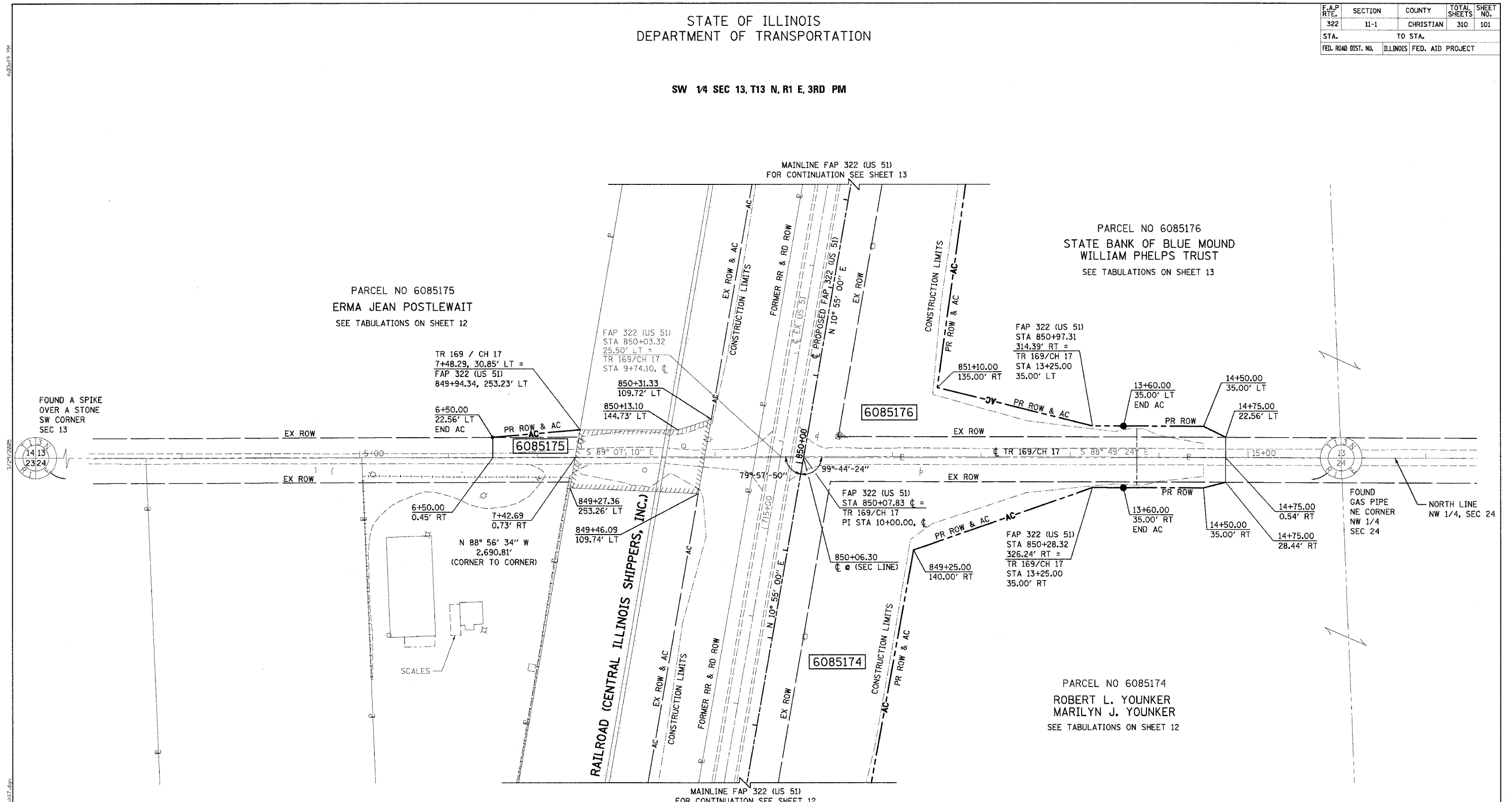
PARCEL NO 6085175
ERMA JEAN POSTLEWAIT
SEE TABULATIONS ON SHEET 12

PARCEL NO 6085176
STATE BANK OF BLUE MOUND
WILLIAM PHELPS TRUST
SEE TABULATIONS ON SHEET 13

PARCEL NO 6085174
ROBERT L. YOUNKER
MARILYN J. YOUNKER
SEE TABULATIONS ON SHEET 12

FOUND A SPIKE
OVER A STONE
SW CORNER
SEC 13

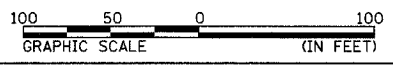
FOUND
GAS PIPE
NE CORNER
NW 1/4
SEC 24



NW 14 SEC 24, T13 N, R1 E, 3RD PM

NOTES:
BEARINGS ARE BASED ON THE ILLINOIS STATE PLANE
COORDINATE SYSTEM, NAD83 1986 - WEST ZONE
SURVEYED IN ENGLISH.

PLAT DISTANCES AND STATIONING ARE IN GRID ENGLISH.
TO CONVERT TO GROUND DIVIDE BY GRID FACTOR.
GRID FACTOR = 1.00003150



RIGHT OF WAY PLANS	
ROUTE	F.A.P. 322 (US 51)
SECTION	11-1
PROJECT	
COUNTY	CHRISTIAN
JOB NO.	R-96-008-95
STA	2+00 TO STA 17+00
SCALE	1" = 50'
SHEET NO. 23 OF 24	