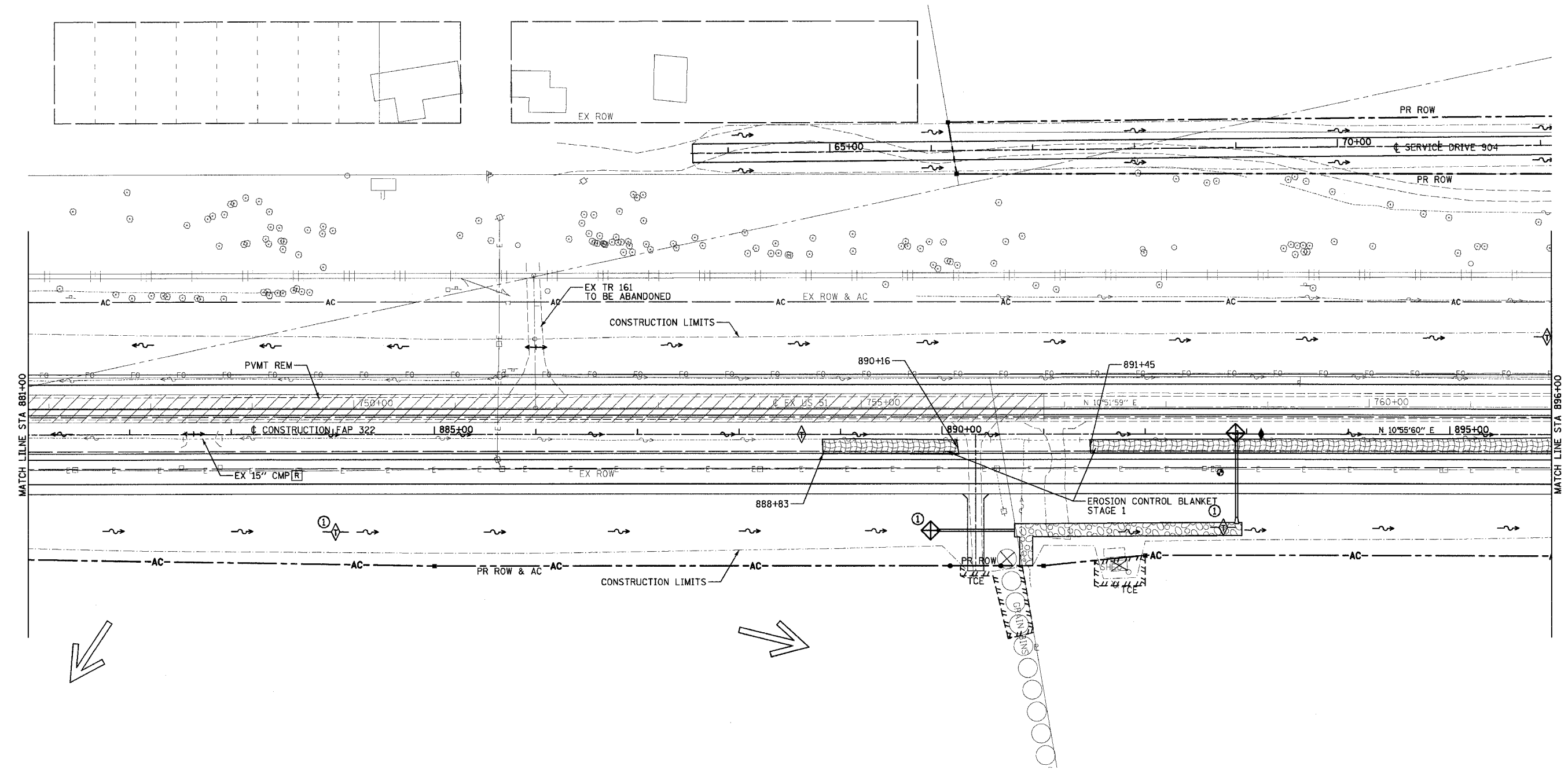


NW 1/4 SEC 13, T13N, R1E, 3RD PM

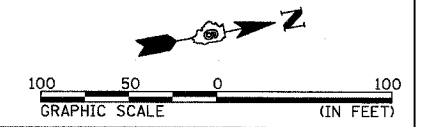
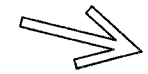
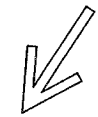
F.A.P. RTE.	SECTION	COUNTY	TOTAL SHEETS	SHEET NO.
322	11-10	CHRISTIAN	310	152
STA.		TO STA.		
FED. ROAD DIST. NO.		ILLINOIS FED. AID PROJECT		

NE 1/4 SEC 13, T13N, R1E, 3RD PM



MATCH LINE STA 881+00

MATCH LINE STA 896+00



REVISIONS	
NAME	DATE

ILLINOIS DEPARTMENT OF TRANSPORTATION  
 STORM WATER POLLUTION  
 PREVENTION PLAN  
 FAP 322 (US 51)  
 SECTION 11-1  
 CHRISTIAN COUNTY

SCALE: 1"=50' DRAWN BY: BDJ  
 DATE: 3/18/05 CHECKED BY: SEB  
 FAP 322 (US 51) STA 881+00 TO STA 896+00

NE 1/4 SEC 13, T13N, R1E, 3RD PM

3/27/2005

D:\BILT\Users\BILT257\work\shp\plans\1126\1126.dwg