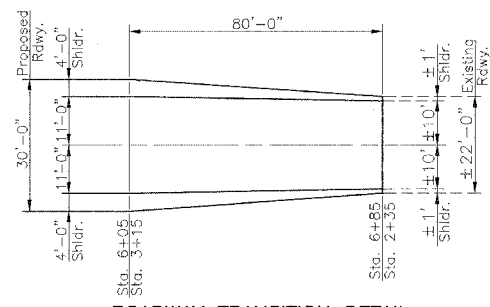
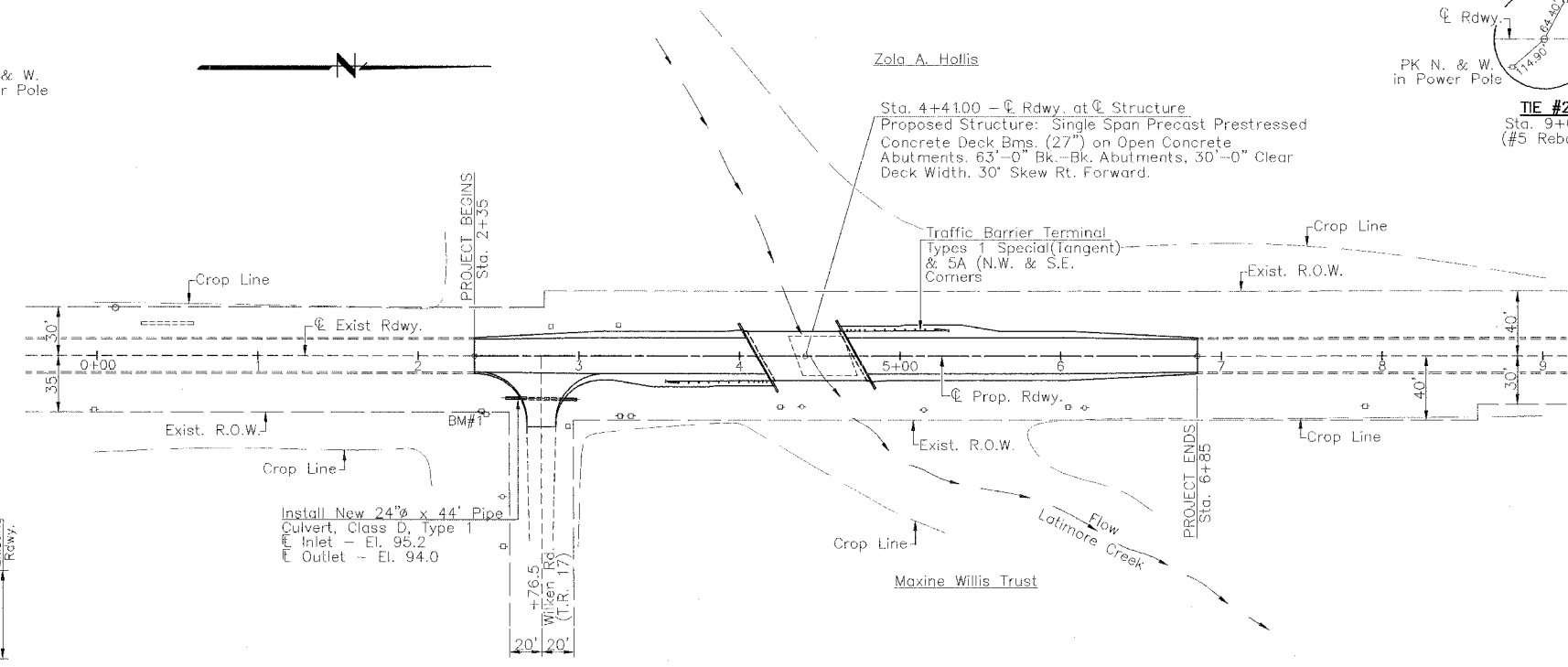
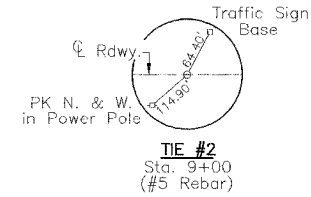
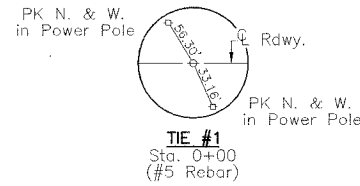
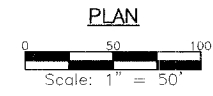


RTE.	SECTION	COUNTY	TOTAL SHEETS	SHEET NO.
F.A.S.575	*	MENARD	9	3
PROJECT				
* 01-00050-00-BR				

SECTION 15 T. 19 N. R. 7 W. 3rd P.M.



ROADWAY TRANSITION DETAIL



Seeding - Sta. 2+35 to Sta. 6+85 - R.O.W. to R.O.W. - 0.55 Acre

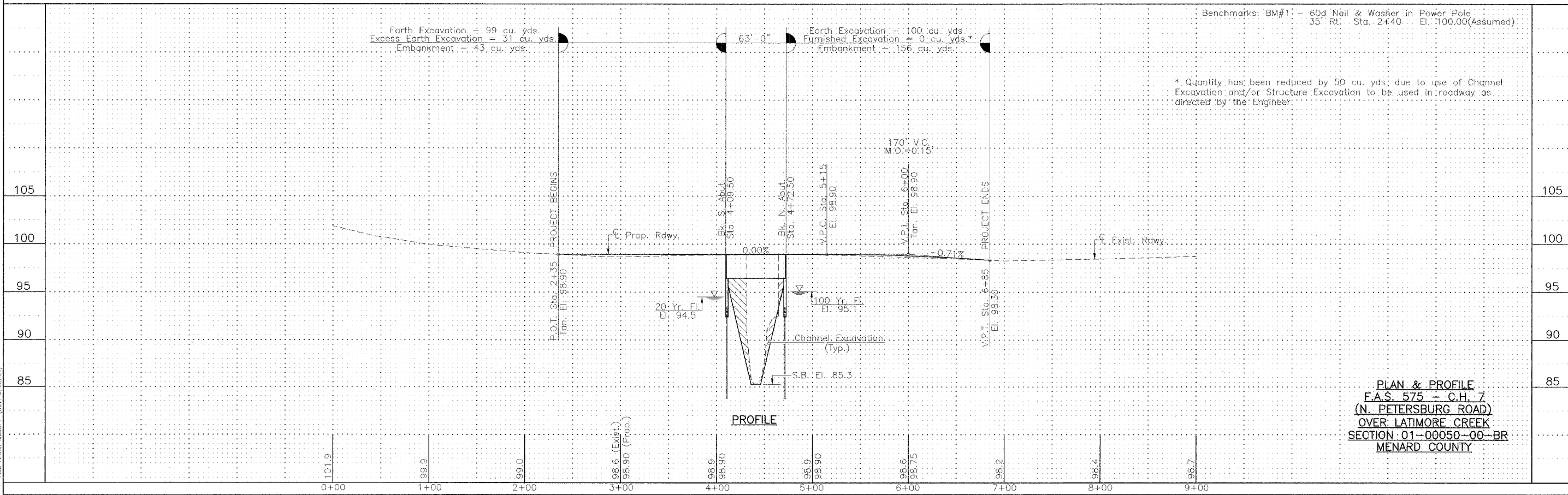
**UTILITIES**  
 S.B.C.  
 529 South 7th Street  
 Springfield, Illinois 62721  
 1-217-789-8367  
 Menard Electric Cooperative  
 P.O. Box 200  
 Petersburg, Illinois 62675  
 1-217-632-7746

Earth Excavation = 99 cu. yds.  
 Excess Earth Excavation = 31 cu. yds.  
 Embankment = 43 cu. yds.

Earth Excavation = 100 cu. yds.  
 Furnished Excavation = 0 cu. yds.\*  
 Embankment = 156 cu. yds.

Benchmarks: BM#1 - 60d Nail & Washer in Power Pole 35' Rt. Sta. 2+40 El. 100.00 (Assumed)

\* Quantity has been reduced by 50 cu. yds. due to use of Channel Excavation and/or Structure Excavation to be used in roadway as directed by the Engineer.



PROFILE

PLAN & PROFILE  
 F.A.S. 575 - C.H. 7  
 (N. PETERSBURG ROAD)  
 OVER LATIMORE CREEK  
 SECTION 01-00050-00-BR  
 MENARD COUNTY

FILE NAME: MCDOPP (REV. 9/25/04)