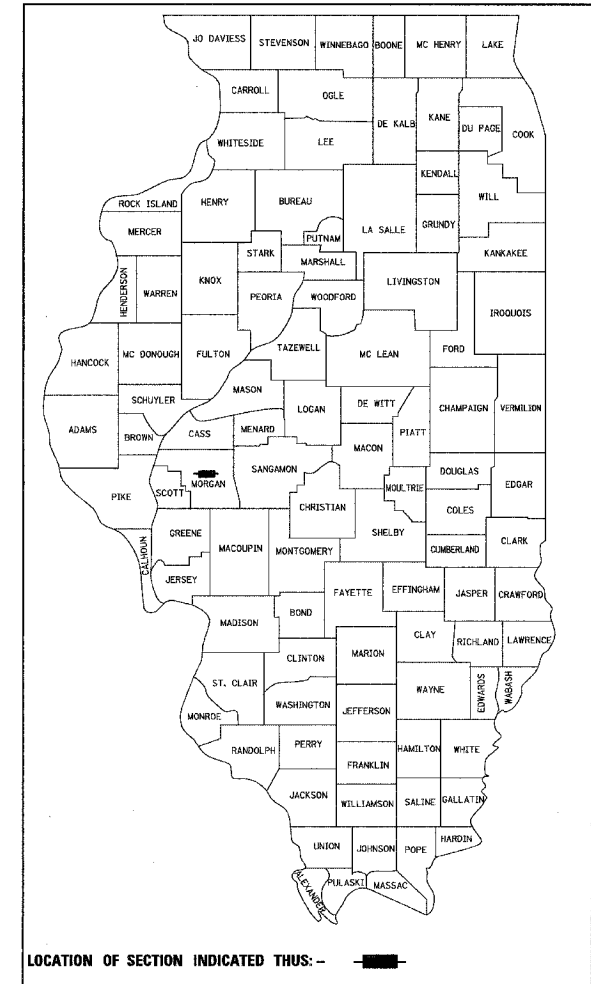


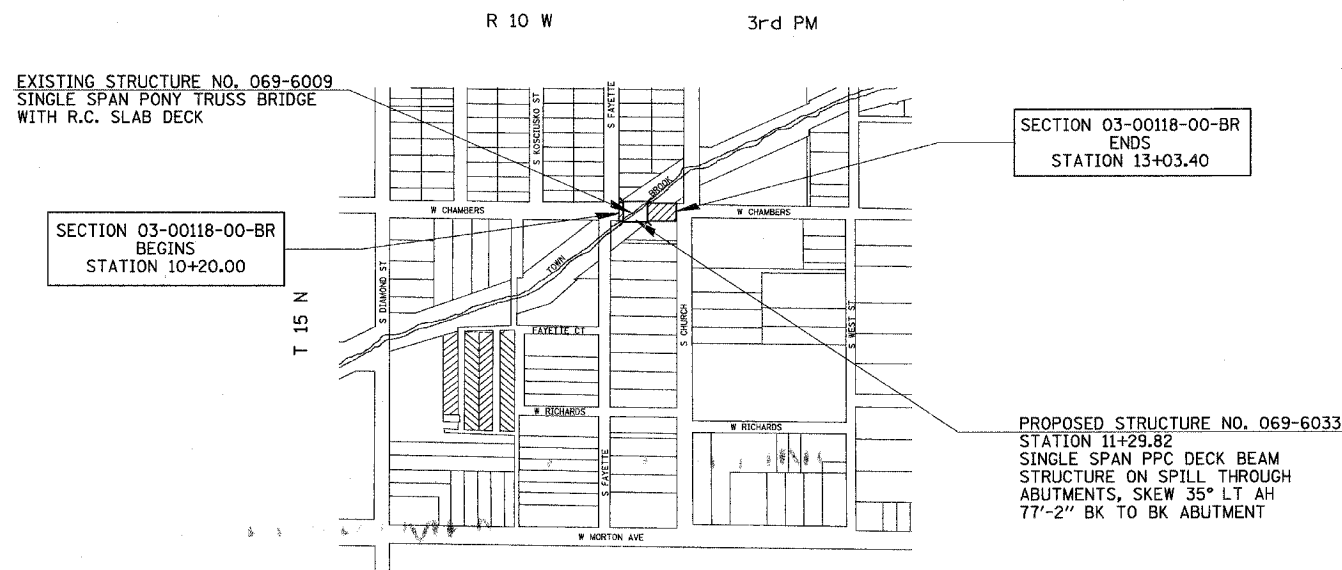
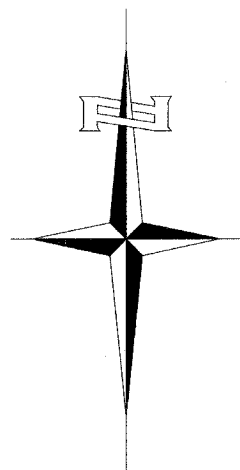
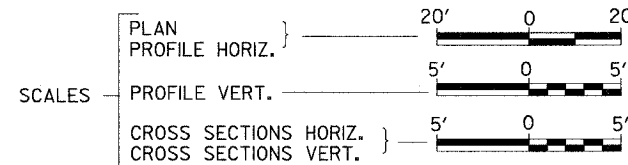
INDEX OF SHEETS

- 1 COVER SHEET
- 2 GENERAL NOTES, LEGEND
- 3 SUMMARY OF QUANTITIES
- 4 SCHEDULE OF QUANTITIES
- 5-6 TYPICAL SECTIONS
- 7 TRAFFIC CONTROL PLAN
- 8 EROSION CONTROL PLAN
- 9 PLAN AND PROFILE
- 10-14 BRIDGE PLANS
- 15 INTERSECTION DETAILS
- 16 SPECIAL DETAILS
- 17-19 CROSS SECTIONS

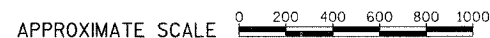
STATE OF ILLINOIS
DEPARTMENT OF TRANSPORTATION
PLANS FOR PROPOSED
BRIDGE REPLACEMENT AND REHABILITATION PROGRAM
CITY OF JACKSONVILLE
SECTION 03-00118-00-BR
WEST CHAMBERS STREET OVER THE TOWN BROOK
PROJECT NO. BRM-5032(22)
JOB NO. C-96-215-04



- REQUIRED HIGHWAY STANDARDS**
- 000001-04 ABBREVIATIONS AND SYMBOLS
 - 280001-02 TEMPORARY EROSION CONTROL SYSTEMS
 - 424001-03 CURB RAMPS FOR SIDEWALKS
 - 515001-02 NAME PLATE FOR BRIDGES
 - 602301 INLET, TYPE A
 - 604001-02 FRAME AND LIDS TYPE 1
 - 604051-01 FRAME AND GRATE, TYPE 11
 - 606001-02 CONCRETE CURB TYPE B AND COMBINATION CONCRETE CURB AND GUTTER
 - 630001-05 STEEL PLATE BEAM GUARDRAIL
 - 630301-03 SHOULDER WIDENING FOR TYPE 1, (SPECIAL) GUARDRAIL TERMINALS
 - 631026-02 TRAFFIC BARRIER TERMINAL TYPE 5 & 5A
 - 635006-02 REFLECTOR AND TERMINAL MARKER PLACEMENT
 - 701501-03 URBAN LANE CLOSURE, 2L, 2W UNDIVIDED
 - 701801-03 LANE CLOSURE MULTILANE 1W OR 2W CROSSWALK OR SIDEWALK CLOSURE
 - 702001-05 TRAFFIC CONTROL DEVICES
 - 780001-01 TYPICAL PAVEMENT MARKINGS
 - BLR 21-6 TYPICAL APPLICATION OF TRAFFIC CONTROL DEVICES FOR CONSTRUCTION ON RURAL LOCAL HIGHWAYS
 - BLR 22-4 TYPICAL APPLICATION OF TRAFFIC CONTROL DEVICES FOR CONSTRUCTION ON RURAL LOCAL HIGHWAYS



LOCATION MAP



TOTAL LENGTH OF PROJECT = 283.40 FEET = 0.054 MILES

DESIGN DESIGNATION

LOCAL STREET (TS-2): ADT = 1697 (2024)
 DESIGN SPEED: 30 MPH

UTILITY COMPANY

GAS & ELECTRIC
 ILLINOIS POWER COMPANY
 2460 NORTH JASPER STREET
 DECATUR, IL 62526

CABLE T.V.
 MEDIACOM CABLE
 409 MASSEY LANE
 JACKSONVILLE, ILLINOIS

TELEPHONE
 VERIZON
 300 WEST BEECHER
 JACKSONVILLE, ILLINOIS

WATER & SEWER
 CITY OF JACKSONVILLE
 MUNICIPAL BUILDING
 200 WEST DOUGLAS
 JACKSONVILLE, ILLINOIS

CALL J.U.L.I.E.
 BEFORE YOU DIG
 1-800-892-0123

CONTRACT NO. 93390

SECTION 03-00118-00-BR
 ENDS
 STATION 13+03.40

PROPOSED STRUCTURE NO. 069-6033
 STATION 11+29.82
 SINGLE SPAN PPC DECK BEAM
 STRUCTURE ON SPILL THROUGH
 ABUTMENTS, SKEW 35° LT AH
 77'-2" BK TO BK ABUTMENT

APPROVED 3-1-05 2005

Don Anderson
 MAYOR - CITY OF JACKSONVILLE

PASSED Mar 23 2005

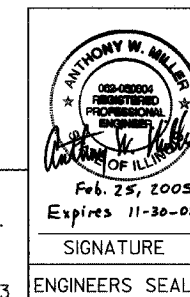
W.B. Jones
 DISTRICT ENGINEER OF CONSTRUCTION

PASSED MARCH 23 2005

Christie M. Reed
 DISTRICT ENGINEER OF LOCAL ROADS & STREETS

APPROVED MARCH 25 2005

Christie M. Reed
 DISTRICT ENGINEER
 STATE OF ILLINOIS
 DEPARTMENT OF TRANSPORTATION



Hutchison Engineering, Inc.
 JACKSONVILLE ILLINOIS

2005 JOB#2223

SIGNATURE
 ENGINEERS SEAL

2223C001

F.A. RTE.	SECTION	COUNTY	TOTAL SHEETS	SHEET NO.
*	**	MORGAN	19	2

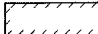
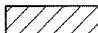
* WEST CHAMBERS STREET ** 03-00118-00-BR
D-96

CONTRACT NO. 93390

GENERAL NOTES

1. THE REMOVAL OF BITUMINOUS SURFACING NOT ON A RIGID TYPE BASE REMOVED IN CONJUNCTION WITH THE BASE SHALL BE REMOVED AS EARTH EXCAVATION.
2. WHENEVER IT IS NECESSARY TO REMOVE EXISTING GRAVEL OR CRUSHED STONE BASE COURSE, IT SHALL BE REMOVED AT THE CONTRACT UNIT PRICE PER CUBIC YARD FOR EARTH EXCAVATION. NO ADDITIONAL COMPENSATION WILL BE ALLOWED FOR ADDITIONAL LABOR OR EQUIPMENT REQUIRED.
3. THE LOCATION OF UNDERGROUND UTILITIES SHOWN ON THE PLANS REPRESENTS THE BEST KNOWLEDGE OF THE CITY AND THE INDICATED ADJUSTMENTS OR RECONSTRUCTION ARE CONSIDERED TO BE REASONABLY ACCURATE. IT SHALL BE THE CONTRACTORS RESPONSIBILITY, AS DETAILED IN SECTION 563 OF THE STANDARD SPECIFICATIONS FOR ROAD AND BRIDGE CONSTRUCTION TO VERIFY LOCATIONS OF UNDERGROUND INSTALLATIONS BEFORE STARTING CONSTRUCTION OPERATIONS. THE CONTRACTOR SHALL IDEMNIFY THE CITY, ITS OFFICERS, AND EMPLOYEES AGAINST ALL CLAIMS DUE TO DAMAGE TO CORPORATE OR PRIVATE PROPERTY RESULTING FROM HIS CONSTRUCTION OPERATIONS AS DESCRIBED IN ARTICLE 107.20 AND 107.26 OF THE STANDARD SPECIFICATIONS FOR ROAD AND BRIDGE CONSTRUCTION.
4. THE CONTRACTOR MAY BE REQUIRED TO CONDUCT SOME OF HIS GRADING AND TRENCHING OPERATIONS AROUND TRANSMISSION POLES AND UNDER TRANSMISSION LINES. THE ADDED COST OF SO DOING SHALL BE INCLUDED IN THE COST OF EARTH EXCAVATION.
5. EXISTING CONCRETE SIGN BASES AND OTHER MISCELLANEOUS CONCRETE NOT SPECIFICALLY SHOWN ON THE PLANS, BUT INTERFERING WITH PROPOSED CONSTRUCTION, SHALL BE REMOVED. COST OF THIS WORK SHALL BE INCLUDED IN THE COST OF EARTH EXCAVATION.
6. WHERE SECTION OR SUB-SECTION MONUMENTS ARE ENCOUNTERED, THE ENGINEER SHALL BE NOTIFIED BEFORE SUCH MONUMENTS ARE REMOVED. THE CONTRACTOR SHALL PROTECT AND PRESERVE PROPERTY MARKERS AND MONUMENTS UNTIL THE OWNER, AN AUTHORIZED SURVEYOR OR AGENT HAS WITNESSED OR OTHERWISE REFERENCED THEIR LOCATION.
7. WHEREVER IN THESE PLANS REFERENCE IS MADE TO THE "STANDARD SPECIFICATIONS", IT IS UNDERSTOOD TO INCLUDE THE "SUPPLEMENTAL SPECIFICATIONS" INCLUDED IN THE PROPOSAL.
8. ALL ELEVATIONS SHOWN REFER TO THE U.S.G.S. DATUM AT MEAN SEA LEVEL.
9. POLLUTION CONTROL : THE CONTRACTOR WILL BE REQUIRED TO COMPLY WITH ALL STATE REGULATIONS REGARDING AIR, WATER AND NOISE POLLUTION. HE WILL NOT BE ALLOWED TO BUILD FIRES ON THE SITE.
10. IT IS THE CONTRACTOR'S RESPONSIBILITY TO ASCERTAIN EXISTING FIELD CONDITIONS BEFORE BIDDING ON THIS PROJECT, SPECIFICALLY AS THEY RELATE TO THE LUMP SUM PAY ITEMS.
11. THE CONTRACTOR SHALL NOTIFY THE AGENCIES AND UTILITIES AT LEAST 10 (TEN) DAYS PRIOR TO ANY CONSTRUCTION IN THE AREA AND SHALL COMPLY WITH ALL RESTRICTIONS FOR EQUIPMENT MOVEMENTS AND CLEARANCES AS REGARDS TO THEIR FACILITIES.
12. BEFORE STARTING ANY EXCAVATION, THE CONTRACTOR MUST CALL J.U.L.I.E. AT 1-800-892-0123 FOR FIELD LOCATIONS OF BURIED ELECTRICAL, TELEPHONE, GAS FACILITIES, AND ALL PUBLIC UTILITIES. A 48 HOUR NOTIFICATION IS REQUIRED.
13. THE CONTRACTOR SHALL USE ALL NECESSARY PRECAUTIONS AND PROTECTIVE MEASURES REQUIRED TO MAINTAIN EXISTING UTILITIES, SEWER AND APPURTENANCES THAT MUST BE KEPT IN OPERATION. IN PARTICULAR, THE CONTRACTOR WILL TAKE ADEQUATE MEASURES TO PREVENT THE UNDERMINING OF UTILITIES AND SEWERS WHICH ARE STILL IN SERVICE.
14. VERIFICATION OF DIMENSIONS : IT IS THE CONTRACTOR'S RESPONSIBILITY TO VERIFY ALL DIMENSIONS AND CONDITIONS EXISTING IN THE FIELD PRIOR TO CONSTRUCTION AND ORDERING MATERIALS.
15. THE CONTRACTOR SHALL BE REQUIRED TO PROVIDE ACCESS TO ABUTTING PROPERTY OWNERS AT ALL TIMES DURING CONSTRUCTION OF THE PROJECT.
16. DURING CONSTRUCTION OPERATIONS, IF ANY LOOSE MATERIAL IS DEPOSITED IN THE FLOW LINE OF DITCHES, GUTTERS OR DRAINAGE STRUCTURES SO THAT THE NATURAL FLOW OF WATER IS OBSTRUCTED, IT SHALL BE REMOVED AT THE CLOSE OF EACH WORKING DAY. AT THE CONCLUSION OF CONSTRUCTION OPERATIONS, ALL DRAINAGE STRUCTURES SO AFFECTED SHALL BE FREE FROM ALL DEBRIS. THIS WORK SHALL BE INCLUDED WITH THE COST OF THE EARTH EXCAVATION.
17. ALL FRAMES, GRATES, SIGNS, FENCES AND DELINEATORS, NEW OR EXISTING, DAMAGED THROUGH CONTRACTOR'S NEGLIGENCE DURING CONSTRUCTION SHALL BE REPLACED BY THE CONTRACTOR AT HIS EXPENSE.
18. THE COST OF ADDITIONAL LABOR AND MATERIALS NOT ACCOUNTED FOR ON THE PLANS, WHICH MIGHT BE INVOLVED IN CONNECTING EXISTING DRAIN TILE OR STORM SEWERS TO PROPOSED DRAINAGE STRUCTURES, SHALL BE INCLUDED WITH THE COST OF THE STORM SEWER.
19. THE ENDS OF EXISTING DRAINAGE LINES WHICH ARE NOT TO BE INCORPORATED INTO THE PROPOSED IMPROVEMENT ARE TO BE SEALED TO THE SATISFACTION OF THE ENGINEER. COST OF SUCH WORK SHALL BE INCLUDED WITH THE COST OF THE STORM SEWER.
20. EXISTING PAVEMENT, SIDEWALK, DRIVEWAY PAVEMENT, CURB AND GUTTER AND EXISTING DRAINAGE STRUCTURES NOT INCLUDED IN THE PLANS FOR REMOVAL, BUT DAMAGED DUE TO THE CONTRACTOR'S NEGLIGENCE SHALL BE REPLACED AT THE EXPENSE OF THE CONTRACTOR.
21. TRAFFIC SIGNS REMOVED MUST BE RESET AT THEIR PERMANENT LOCATIONS IN A WORKMANLIKE MANNER AND VISIBLE TO TRAFFIC ON THE ROADWAY AS DIRECTED BY THE ENGINEER. THESE SIGNS SHALL BE RESET BEFORE THE ROADWAY IS OPEN TO TRAFFIC. COST OF SUCH WORK SHALL BE CONSIDERED INCIDENTAL TO THE CONTRACT.
22. THE CONTRACTOR SHALL COMPLY WITH THE ENVIRONMENTAL PROTECTION AGENCY (E.P.A.) REGULATIONS WHICH APPLY TO STORM SEWER CONSTRUCTION REGARDING THE HORIZONTAL AND VERTICAL SEPARATION OF A STORM SEWER LINE FROM ANY EXISTING OR PROPOSED WATERMAIN. AT LOCATIONS WHERE THE SEPARATION IS INADEQUATE, THE CONTRACTOR SHALL ADJUST THE WATERMAIN TO PROVIDE THE REQUIRED SEPARATION OR CONSTRUCT THE STORM SEWER OF THE MATERIAL SPECIFIED IN THE E.P.A. REGULATIONS.
23. FOR INLETS CONSTRUCTED IN CONJUNCTION WITH THE CURB/GUTTER, THE OFFSET DISTANCE SHOWN ON THE PLANS IS FROM THE CENTERLINE OF CONSTRUCTION TO THE FACE OF CURB/GUTTER. IT SHALL BE THE RESPONSIBILITY OF THE CONTRACTOR TO CONSTRUCT EACH INLET AT THE PROPOSED LOCATION SO THAT THE FRAME MATCHES THE CURB LINE.
24. FRAMES AND GRATES ON EXISTING STRUCTURES, PIPE CULVERTS AND WATER MAIN WHICH ARE TO BE REMOVED, ABANDONED, OR WHICH OTHERWISE ARE NOT INCORPORATED INTO THE IMPROVEMENT SHALL BECOME THE PROPERTY OF THE CITY OF JACKSONVILLE. THE CONTRACTOR SHALL STORE THESE ITEMS WITHIN THE RIGHT OF WAY AT LOCATIONS DESIGNATED BY THE ENGINEER.
25. ANY REFERENCE TO STANDARDS THROUGHOUT THE PLANS SHALL BE INTERPRETED TO BE THE LATEST STANDARDS OF THE DEPARTMENT AS SHOWN ON THE TABULATION OF REQUIRED STATE STANDARDS SHOWN IN THE PLANS.
26. THE FINISHED EARTHWORK SHALL HAVE A VEGETATION SUSTAINING SOIL COVERING THE TOP 4 INCHES IN AREAS TO BE SEEDED. THE VEGETATION SUSTAINING SOIL REQUIRED WILL NOT BE PAID FOR SEPARATELY BUT SHALL BE INCLUDED IN THE COST OF EARTH EXCAVATION.
27. THE TRENCH BACKFILL REQUIRED WILL NOT BE PAID FOR INDIVIDUALLY, BUT SHALL BE INCLUDED IN THE COST OF STORM SEWER (WATER MAIN REQUIREMENTS) 12 INCH.

LEGEND

-  = CURB & GUTTER, SIDEWALK REMOVAL
-  = BITUMINOUS SURFACE REMOVAL, BUTT JOINT
- TBR = TO BE REMOVED
- SS WM REQ = STORM SEWER (WATER MAIN REQUIREMENT)
- TC = TOP OF CURB ELEVATION
- L = LID ELEVATION

REVISIONS		ILLINOIS DEPARTMENT OF TRANSPORTATION
NAME	DATE	
		<p>WEST CHAMBERS STREET GENERAL NOTES, LEGEND</p> <p>DRAWN BY _____ CHECKED BY _____</p> <p>DATE _____</p>

F.A. RTE.	SECTION	COUNTY	TOTAL SHEETS	SHEET NO.
*	**	MORGAN	19	3
STA.		TO STA.		
FED. ROAD DIST. NO.		ILLINOIS	FED. AID PROJECT	
* WEST CHAMBERS STREET				
** 03-00118-00-BR				

SUMMARY OF QUANTITIES

CODE NO.	ITEM	UNIT	TOTAL QUANTITY
20100110	TREE REMOVAL (6 TO 15 UNITS DIAMETER)	UNIT	22
20200100	EARTH EXCAVATION	CU YD	130
20300100	CHANNEL EXCAVATION	CU YD	335
20400800	FURNISHED EXCAVATION	CU YD	180
25000100	SEEDING, CLASS 1	ACRE	0.25
25000400	NITROGEN FERTILIZER NUTRIENT	POUND	22
25000500	PHOSPHORUS FERTILIZER NUTRIENT	POUND	22
25000600	POTASSIUM FERTILIZER NUTRIENT	POUND	22
25100115	MULCH, METHOD 2	ACRE	0.25
* 28000250	TEMPORARY EROSION CONTROL SEEDING	POUND	100
28000300	TEMPORARY DITCH CHECKS	EACH	6
28000400	PERIMETER EROSION BARRIER	FOOT	165
28000500	INLET AND PIPE PROTECTION	EACH	1
28100207	STONE RIPRAP, CLASS A4	TON	265
28200200	FILTER FABRIC	SQ YD	385
31100100	SUB-BASE GRANULAR MATERIAL, TYPE A	TON	147
40200800	AGGREGATE SURFACE COURSE, TYPE B	TON	26
40600100	BITUMINOUS MATERIALS (PRIME COAT)	GAL	13
40600980	BITUMINOUS SURFACE REMOVAL - BUTT JOINT	SQ YD	66
42001300	PROTECTIVE COAT	SQ YD	52
42400100	PORTLAND CEMENT CONCRETE SIDEWALK 4 INCH	SQ FT	268
44000100	PAVEMENT REMOVAL	SQ YD	76
44000500	COMBINATION CURB AND GUTTER REMOVAL	FOOT	79
44000600	SIDEWALK REMOVAL	SQ FT	251
48101200	AGGREGATE SHOULDERS, TYPE B	TON	38
* 50100100	REMOVAL OF EXISTING STRUCTURES	EACH	1
* 50105210	REMOVE EXISTING CULVERTS	FOOT	19
50200100	STRUCTURE EXCAVATION	CU YD	135

CODE NO.	ITEM	UNIT	TOTAL QUANTITY
* 50300225	CONCRETE STRUCTURES	CU YD	51.0
* 50400605	PRECAST PRESTRESSED CONCRETE DECK BEAMS (33" DEPTH)	SQ FT	2248
50800105	REINFORCEMENT BARS	POUND	4720
51201000	FURNISHING METAL PILE SHELLS 12"	FOOT	738
51202600	DRIVING AND FILLING SHELLS	FOOT	738
51203200	TEST PILE METAL SHELLS	EACH	2
* 51204315	CONCRETE ENCASEMENT	CU YD	3.7
51500100	NAME PLATES	EACH	1
54200220	PIPE CULVERTS, CLASS D, TYPE 1 15"	FOOT	34
* 56400800	FIRE HYDRANT AND VALVE TO BE MOVED	EACH	1
58100200	WATERPROOFING MEMBRANE SYSTEM	SQ YD	250
58300100	PORTLAND CEMENT MORTAR FAIRING COURSE	FOOT	170
60236800	INLETS, TYPE A, TYPE 11 FRAME AND GRATE	EACH	1
60260400	INLETS TO BE ADJUSTED WITH NEW TYPE 1 FRAME, CLOSED LID	EACH	1
60603800	COMBINATION CONCRETE CURB AND GUTTER, TYPE B-6.12	FOOT	99
63000000	STEEL PLATE BEAM GUARDRAIL, TYPE A	FOOT	87.5
63100075	TRAFFIC BARRIER TERMINAL, TYPE 5A	EACH	3
63100167	TRAFFIC BARRIER TERMINAL, TYPE 1, SPECIAL (TANGENT)	EACH	1
70103700	TRAFFIC CONTROL COMPLETE	L SUM	1
* 78201000	TERMINAL MARKER - DIRECT APPLIED	EACH	3
* X0322033	STORM SEWER (WATER MAIN REQUIREMENTS) 12 INCH	FOOT	4
* X3550400	BITUMINOUS BASE COURSE, SUPERPAVE, 7"	SQ YD	660
* X4066414	BITUMINOUS CONCRETE SURFACE COURSE, SUPERPAVE, MIX "C", N50	TON	96
* X4066614	BITUMINOUS CONCRETE BINDER COURSE, SUPERPAVE, IL-19.0, N50	TON	103
* Z0013798	CONSTRUCTION LAYOUT	L SUM	1
* Z0013825	CONTROLLED LOW-STRENGTH MATERIAL	CU YD	36.2
*	STEEL BRIDGE RAIL, TYPE SM (SPECIAL)	FOOT	154

* SEE SPECIAL PROVISIONS

CONSTRUCTION TYPE CODE
X081

REVISIONS	
NAME	DATE

ILLINOIS DEPARTMENT OF TRANSPORTATION

**WEST CHAMBERS STREET
SUMMARY OF QUANTITIES**

SCALE: VERT. _____
HORIZ. _____

DATE _____ DRAWN BY _____
CHECKED BY _____

AGGREGATE SHOULDERS, TYPE B

STATION TO STATION	SIDE	LENGTH FT	CU. YD.	TON
10+21.59	11+03.85	LT	93.6	5.1
10+18.34	10+78.64	RT	74.5	4.1
11+55.80	11+80.81	RT	22.5	1.2
11+78.90	12+67.67	LT	88.8	4.9
12+16.22	12+69.20	RT	53.0	2.9
TOTAL				37.3
USE				38.0

AGGREGATE SURFACE COURSE, TYPE B

STATION	SIDE	AREA SQ. YD.	TON
12+05	RT	75.7	25.8
TOTAL			25.8
USE			26

BITUMINOUS BASE COURSE SUPERPAVE, 7"

STATION TO STATION	SQ. YD.
10+46.00	10+91.24
11+68.40	13+04.11
TOTAL	660

BITUMINOUS SURFACE REMOVAL - BUTT JOINT

STATION TO STATION	AREA SQ YD
10+19.98	10+29.99
TOTAL	65.1
USE	66

REMOVE EXISTING CULVERTS

STATION	SIDE	SIZE	TYPE	LIN FT
11+94.49	RT	12"	CMP	18.7
TOTAL				18.7
USE				19

COMBINATION CURB & GUTTER REMOVAL

STATION	STATION	SIDE	LENGTH (FEET)
12+86.42	13+02.59	LT	38.8
12+84.54	13+04.11	RT	39.3
TOTAL			78.1
USE			79

COMBINATION CONCRETE CURB & GUTTER, TYPE B-6.12

STATION TO STATION	SIDE	LENGTH (FEET)
12+67.7	13+02.66	LT
12+69.2	13+04.11	RT
TOTAL		98.7
USE		99

EROSION CONTROL SCHEDULE

STATION	SIDE	PERIMETER EROSION BARRIER FEET	TEMPORARY DITCH CHECKS EACH	INLET AND PIPE PROTECTION EACH
10+20 TO 10+70	RT	70		
10+95	LT		1	
11+20	RT		1	
11+30	LT		1	
11+04 TO 11+23	LT	30		
11+23 TO 11+54	RT	42		
11+70	RT		1	
11+77 TO 11+90	LT	23		
12+15	LT		1	
12+11.5	RT			1
12+50	RT		1	
TOTAL		165	6	1

PAVEMENT REMOVAL

STATION TO STATION	SIDE	PAVEMENT REMOVAL SQ YD
10+18.35	10+41.76	RT
10+81.69	10+89.23	LT & RT
12+85.48	13+03.40	LT & RT
TOTAL		75.4
USE		76

PORTLAND CEMENT CONCRETE SIDEWALK, 4 INCH

STATION TO STATION	SIDE	WIDTH FEET	LENGTH FEET	AREA SQ. FT.
12+84.85 TO 13+01.09	LT	5.0	26.4	132.0
12+84.35 TO 13+00.24	RT	5.0	27.1	136.0
TOTAL				268.0
USE				268

SIDEWALK REMOVAL

STATION	SIDE	WIDTH FEET	LENGTH FEET	AREA SQ. FT.
12+98.48	LT	5	26.0	130.0
12+97.65	RT	5	24.1	120.5
TOTAL				250.5
USE				251

SUBBASE GRANULAR MATERIAL, TYPE A

STATION TO STATION	THICK	SQ. YD.	TON
10+41.70	10+72.00	4"	19.8
10+59.00	10+72.00	0' TO 4"	33.5
10+72.00	10+91.24	4"	68.8
11+68.40	13+04.11	4"	538.6
TOTAL			146.7
USE			147

EARTHWORK

STATION TO STATION	EARTH EXCAVATION	ADJUSTED EXCAVATION (EXCAVATION X 0.75)	EMBANKMENT	BALANCE WASTE(+) OR SHORTAGE(-)
CU. YD.				
WEST CHAMBERS STREET				
10+20.00	13+03.40	127	95	274
TOTAL		127	95	274
USE		130	95	275

NOTE: QUANTITY FOR DRIVEWAY AT STATION 12+08 HAS BEEN INCLUDED

BITUMINOUS SURFACING SCHEDULE

STATION TO STATION	BITUMINOUS CONCRETE BINDER COURSE, IL-19.0 TONS	BITUMINOUS CONCRETE SURFACE COURSE, MIX "C" TONS	BITUMINOUS MATERIALS (PRIME COAT) GALLON
10+20 TO 10+91.2	39.8	25.6	12.7
10+91.2 TO 11+68.4		28.0	
11+68.4 TO 13+03.4	63.0	41.6	
TOTAL	102.8	95.2	12.7
USE	103	96	13

GUARDRAIL

STATION TO STATION	SIDE	TRAFFIC BARRIER TERMINAL		STEEL PLATE BEAM GUARDRAIL TYPE A FOOT	TERMINAL MARKER - DIRECT APPLIED EACH
		TYPE 5A EACH	TYPE 1 (SPECIAL) TANGENT EACH		
10+16.5	10+80.0	RT	2	87.5	
11+79.6	12+42.9	LT	1		1
CURLED END SECTION		RT			1
CURLED END SECTION		LT			1
TOTAL			3	87.5	3

SEEDING AND MULCH

LOCATION	SEEDING CLASS 1	NITROGEN FERTILIZER NUTRIENT	PHOSPHORUS FERTILIZER NUTRIENT	POTASSIUM FERTILIZER NUTRIENT	MULCH METHOD 2
	ACRE	POUND			ACRE
NW QUAD	0.05	5	5	5	0.05
SW QUAD	0.02	2	2	2	0.02
NE QUAD	0.08	8	8	8	0.08
SE QUAD	0.04	4	4	4	0.04
TOTAL	0.19	19	19	19	0.19
USE	0.25	22	22	22	0.25

PROTECTIVE COAT

ITEM	SQ YD
PCC SIDEWALK	29.8
C & G, TYPE B-6.12	22.0
TOTAL	51.8
USE	52

REVISIONS	
NAME	DATE

ILLINOIS DEPARTMENT OF TRANSPORTATION

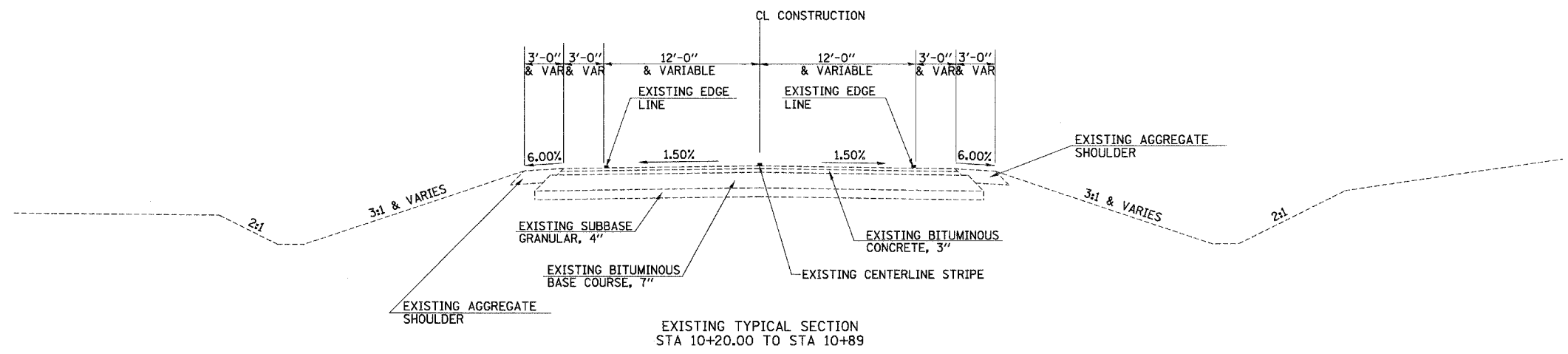
WEST CHAMBERS STREET SCHEDULE OF QUANTITIES

SCALE: VERT. HORIZ. DATE

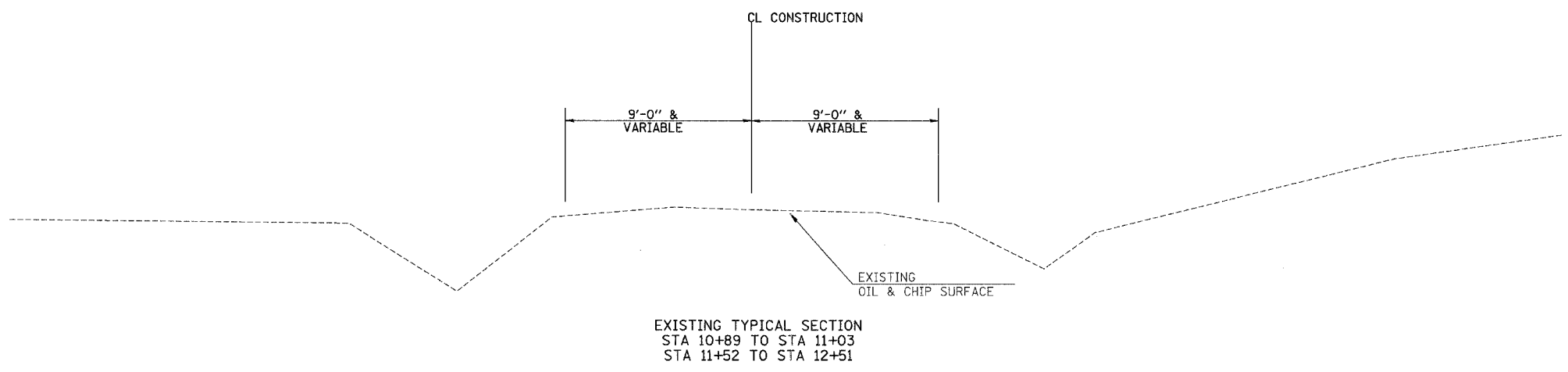
DRAWN BY CHECKED BY

F.A. RTE.	SECTION	COUNTY	TOTAL SHEETS	SHEET NO.
•	•	MORGAN	19	5
FED. ROAD DIST. NO.		ILLINOIS	FED. AID PROJECT	

• WEST CHAMBERS ST. • 03-00118-00-BR
D-96
CONTRACT NO.



• EXCEPT TRANSITIONS



REVISIONS	
NAME	DATE

ILLINOIS DEPARTMENT OF TRANSPORTATION

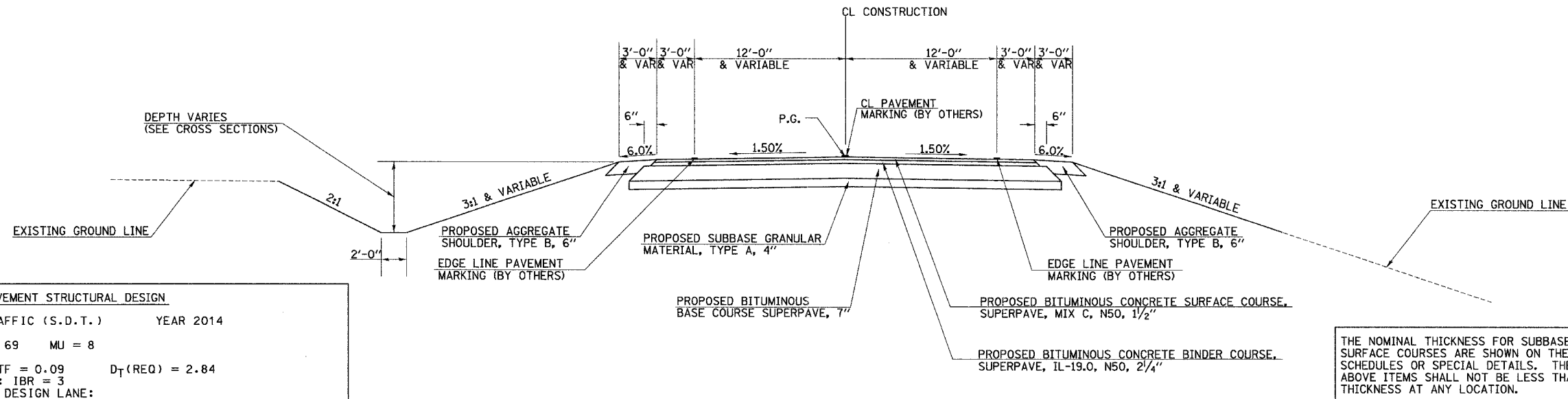
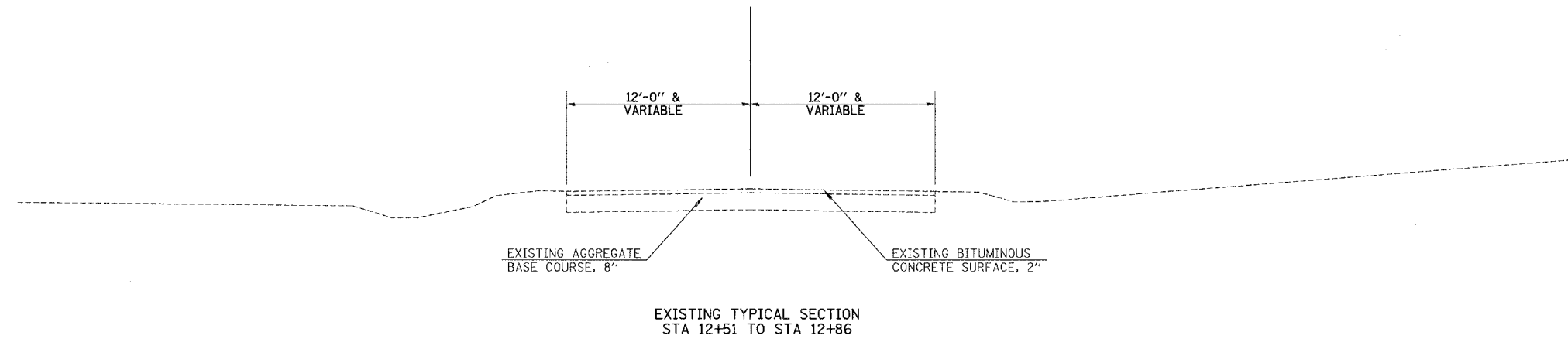
**WEST CHAMBERS STREET
TYPICAL SECTIONS**

DATE _____ DRAWN BY _____
CHECKED BY _____

F.A. RTE.	SECTION	COUNTY	TOTAL SHEETS	SHEET NO.
•	•	MORGAN	19	6

FED. ROAD DIST. NO. ILLINOIS FED. AID PROJECT
 • WEST CHAMBERS ST. • 03-00118-00-BR
 D-96

CONTRACT NO.



PAVEMENT STRUCTURAL DESIGN	
STRUCTURAL DESIGN TRAFFIC (S.D.T.)	YEAR 2014
PV = 1.459	SU = 69 MU = 8
CLASS III ROAD	TF = 0.09 D _T (REQ) = 2.84
MINIMUM SOIL SUPPORT: IBR = 3	PERCENT OF S.D.T. IN DESIGN LANE:
P = 50,	S = 50, M = 50
PAVEMENT STRUCTURE MATERIALS:	
SURFACE COURSE TYPE: BITUMINOUS CONCRETE (N50), 3 3/4", α ₁ = 0.40	
BASE COURSE TYPE: BITUMINOUS, MIN. M.S. = 1500, 7", α ₂ = 0.30	
SUB-BASE COURSE TYPE: GRANULAR MATERIAL, TYPE A, 4", α ₃ = 0.11	
D _T (PROVIDED) = 4.25	

BITUMINOUS MIXTURE REQUIREMENTS				
ITEM	AGGREGATE COMPOSITION	ASPHALT GRADE	ALLOWABLE RAP	VOIDS
BINDER	IL 19.0	PG 64-22	15%	4.0%@N50
SURFACE	MIX "C", IL 9.5 OR 12.5	PG 64-22	15%	4.0%@N50

REVISIONS	
NAME	DATE

ILLINOIS DEPARTMENT OF TRANSPORTATION

**WEST CHAMBERS STREET
TYPICAL SECTIONS**

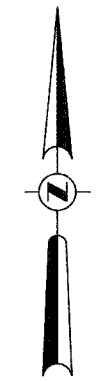
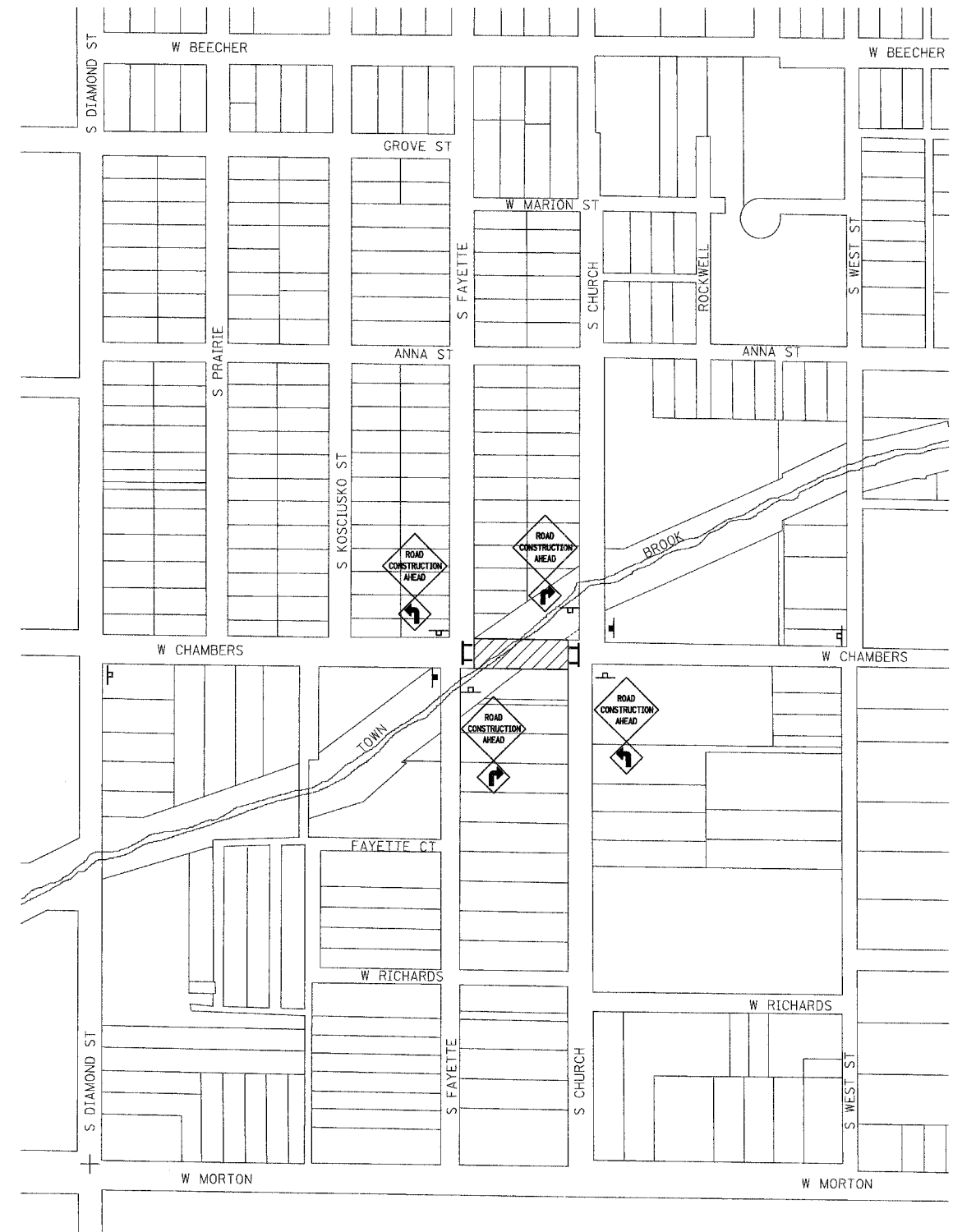
DATE _____ DRAWN BY _____
 CHECKED BY _____

F.A. RTE.	SECTION	COUNTY	TOTAL SHEETS	SHEET NO.
•	••	MORGAN	19	7

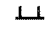

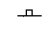
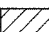
FED. ROAD DIST. NO. ILLINOIS FED. AID PROJECT

• WEST CHAMBERS ST. •• 03-00118-00-BR D-96

CONTRACT NO.



LEGEND

-  TYPE III BARRICADE W/ FLASHING LIGHTS & "ROAD CLOSED" SIGN
-  ROAD CLOSED AHEAD
-  ROAD CONSTRUCTION AHEAD
-  AREA OF CONSTRUCTION

SIGN LOCATIONS AT THE DIRECTION OF THE ENGINEER

TRAFFIC CONTROL PLAN

REVISIONS	
NAME	DATE

ILLINOIS DEPARTMENT OF TRANSPORTATION

**WEST CHAMBERS STREET
TRAFFIC CONTROL PLAN**

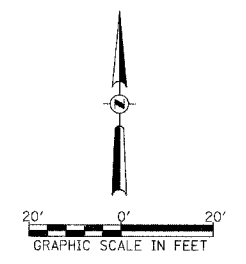
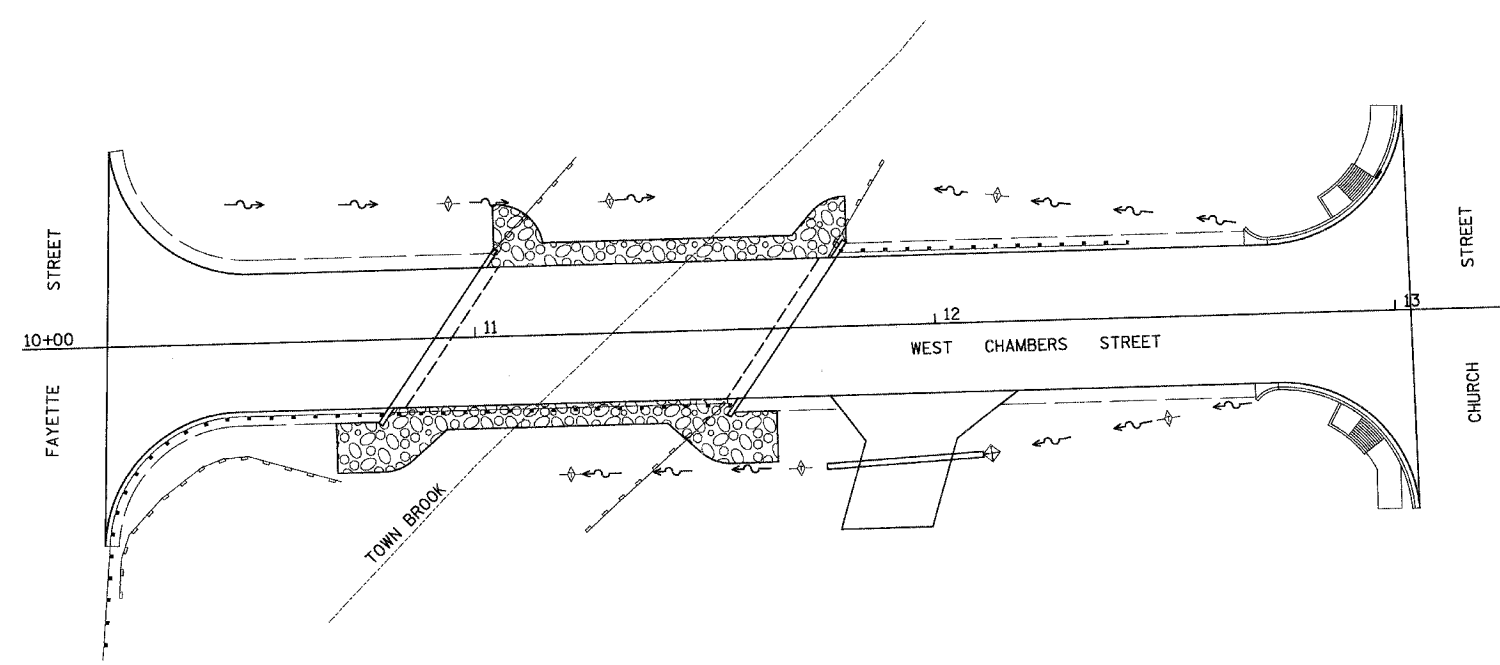
DATE _____

DRAWN BY _____

CHECKED BY _____

F.A. RTE.	SECTION	COUNTY	TOTAL SHEETS	SHEET NO.
*	**	MORGAN	19	8
STA. 10+00.00		TO STA.13+22.95		
FED. ROAD DIST. NO.		ILLINOIS FED. AID PROJECT		
* WEST CHAMBERS STREET		** 03-00118-00-BR		

CONTRACT NO.



- LEGEND**
- ◇ TEMPORARY DITCH CHECK
 - PERIMETER EROSION BARRIER
 - ▨ PROPOSED RIPRAP PLACEMENT
 - ◇ INLET AND PIPE PROTECTION

REVISIONS	
NAME	DATE

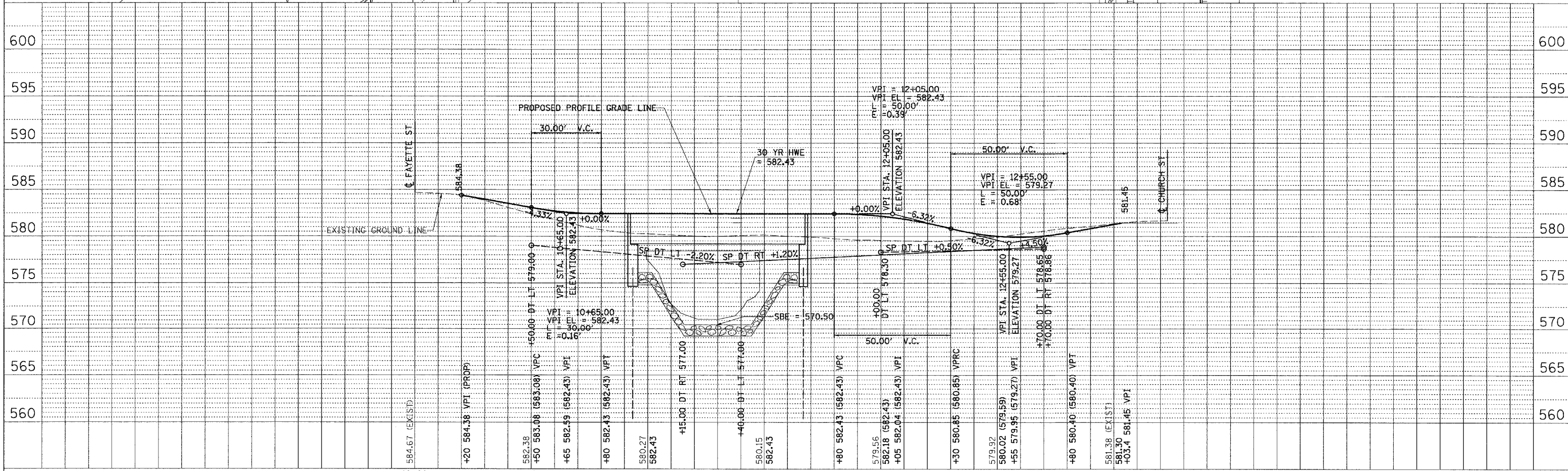
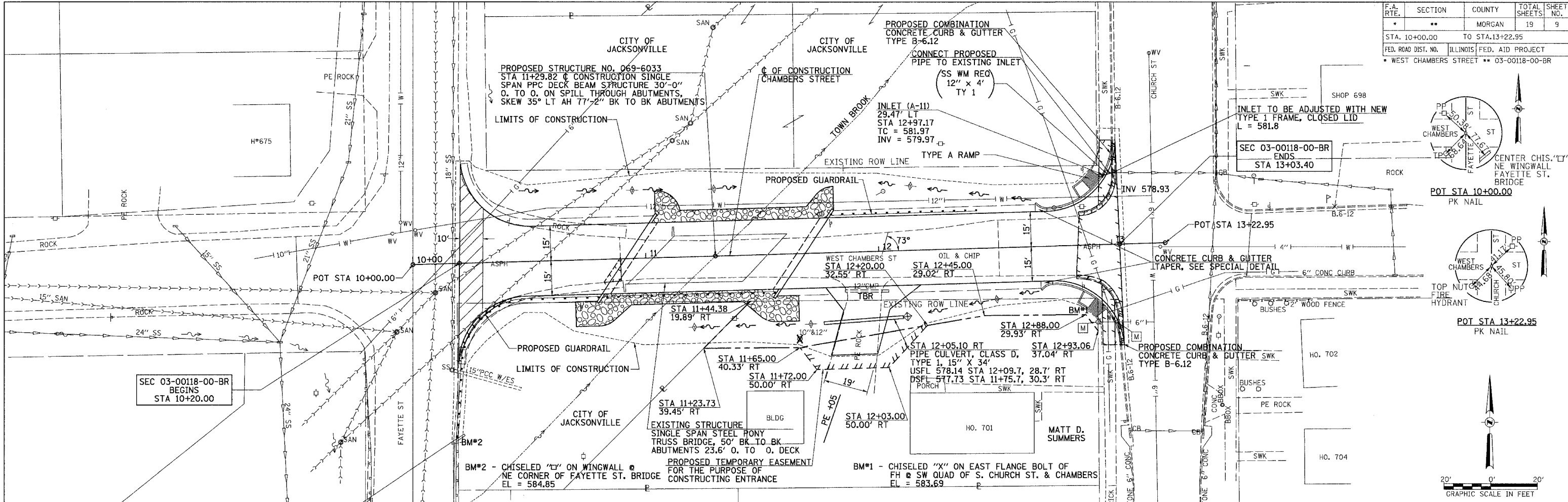
EROSION CONTROL PLAN

DATE _____ DRAWN BY JCC
CHECKED BY _____

F.A. RTE.	SECTION	COUNTY	TOTAL SHEETS	SHEET NO.
*	**	MORGAN	19	9
STA. 10+00.00		TO STA. 13+22.95		
FED. ROAD DIST. NO.		ILLINOIS FED. AID PROJECT		
* WEST CHAMBERS STREET		** 03-00118-00-BR		

DATE	BY

DATE	BY



ROUTE NO.	SECTION	COUNTY	SHEET	PROJECT
**	*	MORGAN	19	10
FED. ROAD DIST. NO. 7	ILLINOIS	PROJECT	BRM-5032(22)	
** CHAMBERS STREET		* 03-00118-00-BR		

SHEET NO. 1
5 SHEETS

B.M.:
Chiseled "L" on Wingwall @ N.E. Corner of Fayette St. Bridge Elev. 584.85
Chiseled "X" on East Flange Bolt of FH @ S.W. quad of S. Church St. & Chambers Elev. 583.69

EXISTING STRUCTURE:
Single span steel modified Warren Pony Truss superstructure with reinforced concrete deck and monolithic concrete curb on concrete caisson supports with timber backing. The structure is 50'-0" back to back of abutments, 23'-7" out to out of deck, and on a 45° skew.
Salvage: Superstructure (See Special Provisions)
Road to be closed to traffic during construction.

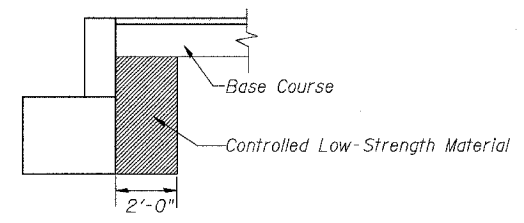
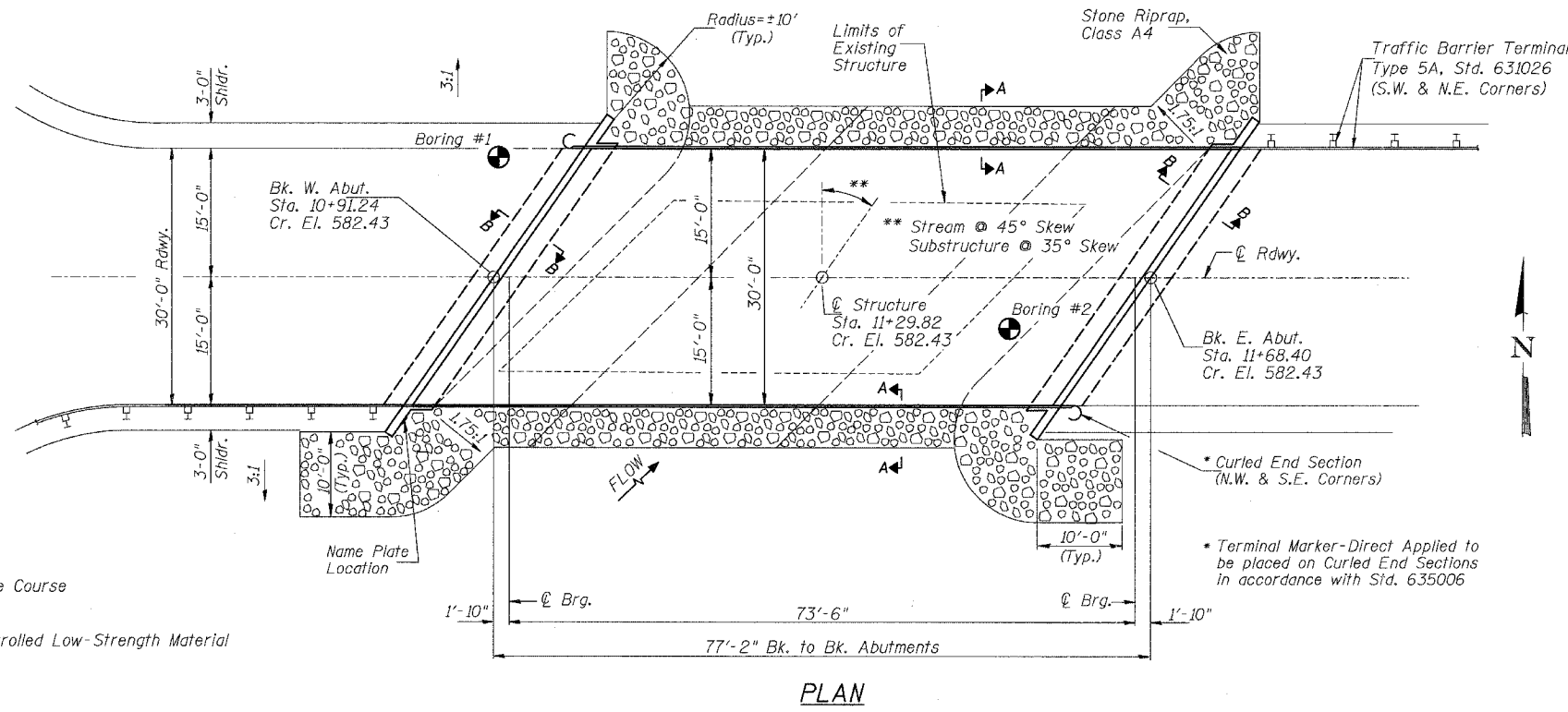
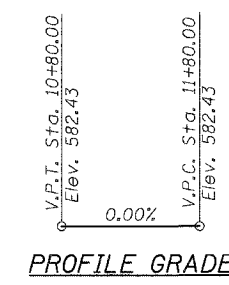
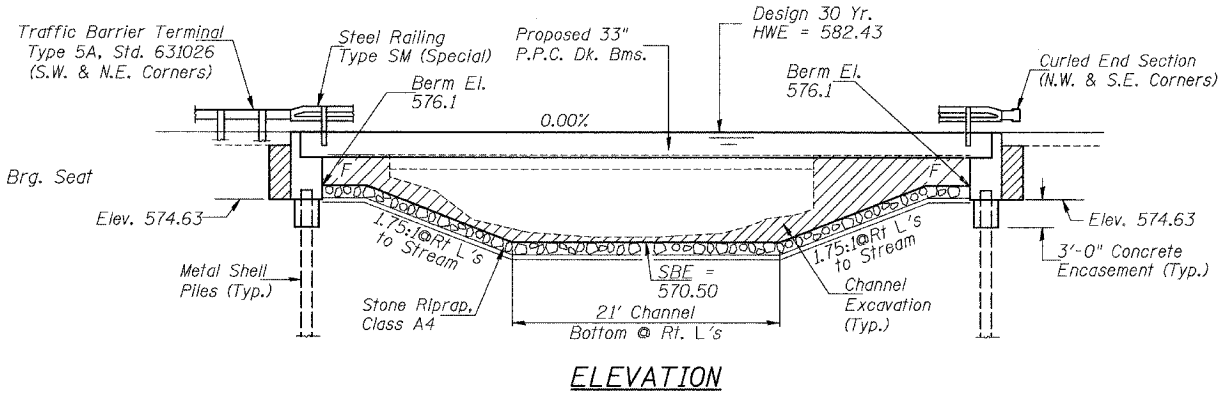
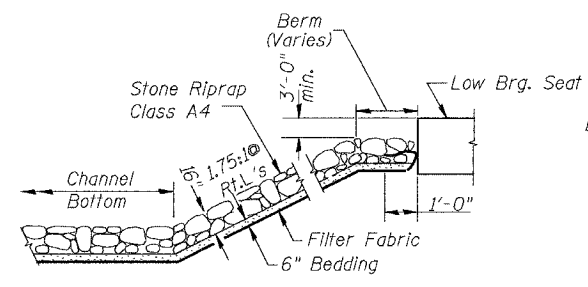
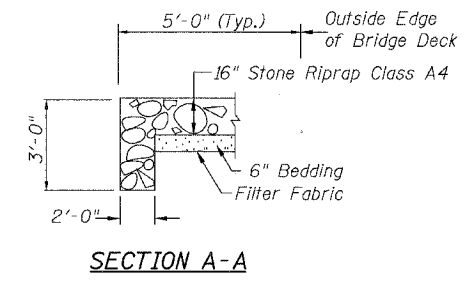
**TOWN BROOK
BUILT 200_ BY
CITY OF JACKSONVILLE
SEC. 03-00118-00-BR
CHAMBERS STREET STATION 11+29.82
F.A. PROJ. BRM-5032(22)
STR. NO. 069-6033 LOADING HS20-44**

NAME PLATE

Locate Name Plate at S.W. Wingwall Corner of Bridge (See Std. 515001)

GENERAL NOTES

The Contractor shall drive 2 test piles, in permanent locations, one at each abutment, as directed by the Engineer before ordering the remaining piles.
For Soil Boring Logs, see Special Provisions.
A Corrosion Inhibitor, as covered in the Special Provisions, shall be used in the concrete for Precast Prestressed Concrete Deck Beams.
Reinforcement Bars shall conform to AASHTO M-31 or M-322, Grade 60.
Layout of the slope protection system may be varied in the field to suit ground conditions as directed by the Engineer.
The top surface of the beams shall be finished in accordance with Article 504.06 of the Standard Specifications except that the surface shall not be roughened by brooming. The finished surface shall be free of depressions or high spots with sharp corners, and the top edge of keys shall be rounded or chamfered a minimum of 1/4".
The existing structural steel coating may contain lead. The contractor should take appropriate precautions to deal with the presence of lead on this project.



TOTAL BILL OF MATERIAL

ITEM	UNIT	SUPER	SUB	TOTAL
Channel Excavation	CU YD		335	335
Stone Riprap, Class A4	TON		265	265
Filter Fabric	SQ YD		385	385
① Removal of Existing Structures	EACH			1
Structure Excavation	CU YD		135	135
① Concrete Structures	CU YD		51.0	51.0
① Precast Prestressed Concrete Deck Beams (33" Depth)	SQ FT	2,248		2,248
Reinforcement Bars	POUND		4,720	4,720
Steel Bridge Rail, Type SM (Special)	FOOT	154		154
Furnishing Metal Pile Shells 12"	FOOT		738	738
Driving and Filling Shells	FOOT		738	738
Test Pile Metal Shells	EACH		2	2
① Concrete Encasement	CU YD		3.7	3.7
Name Plates	EACH		1	1
Waterproofing Membrane System	SQ YD	250		250
Portland Cement Mortar Fairing Course	FOOT	170		170
① Bituminous Concrete Surface Course, Superpave Mix "C", N50	TON	28		28
① Controlled Low-Strength Material	CU YD		36.2	36.2

① See Special Provisions

I certify that to the best of my knowledge, information and belief, this bridge design is structurally adequate for the design loading shown on the plans. The design is an economical one for the style of structure and complies with requirements of the current AASHTO Standard Specification for Highway Bridges. This design complies with all requirements of the current AASHTO Guide Specifications for Seismic Design of highway bridges.

JAMES O. HAMILTON
081-003668
LICENSED
STRUCTURAL
ENGINEER
OF
JACKSONVILLE
ILLINOIS
James O. Hamilton
2/24/2005
License Expires 11/30/2006

James O. Hamilton
Illinois Structural No. 3668
Expires 11/30/2006

WATERWAY INFORMATION

Drainage Area = 5.28 Sq. Mi. Low Grade Elev. = 579.93 @ Sta. 12+59.19

Flood	Freq. Yr.	Q C.F.S.	Opening Sq. ft.		Nat. H.W.E. ft.	Head - ft.		Headwater Elev. - ft.	
			Exist.	Prop.		Exist.	Prop.	Exist.	Prop.
Design	30	1,444	188	320	582.43	0.48	0.48	582.91	582.91
Base	100	1,899	188	320	584.12	0.04	0.04	584.16	584.16

OVER-THE-ROAD AREA

Freq. Yr.	Existing	Proposed
30	394	139
100	739	472

IDNR/OWR has issued permit DS2004171 for the construction of this project.

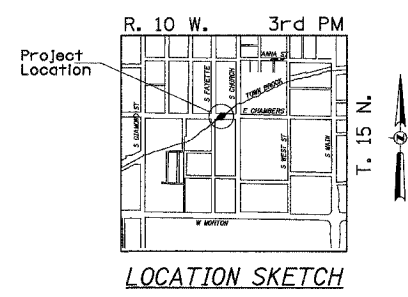
DESIGN SPECIFICATIONS
2002 AASHTO & Interims

DESIGN STRESSES

(FIELD UNITS) $f'_c = 3,500$ p.s.i.
 $f_y = 60,000$ p.s.i. (Rein.)

(PRECAST PRESTRESSED UNITS) $f'_c = 5,000$ p.s.i.
 $f'_{cl} = 4,000$ p.s.i.
 $f'_s = 270,000$ p.s.i. (1/2" Strands)
 $f'_{sl} = 201,960$ p.s.i. (1/2" Strands)

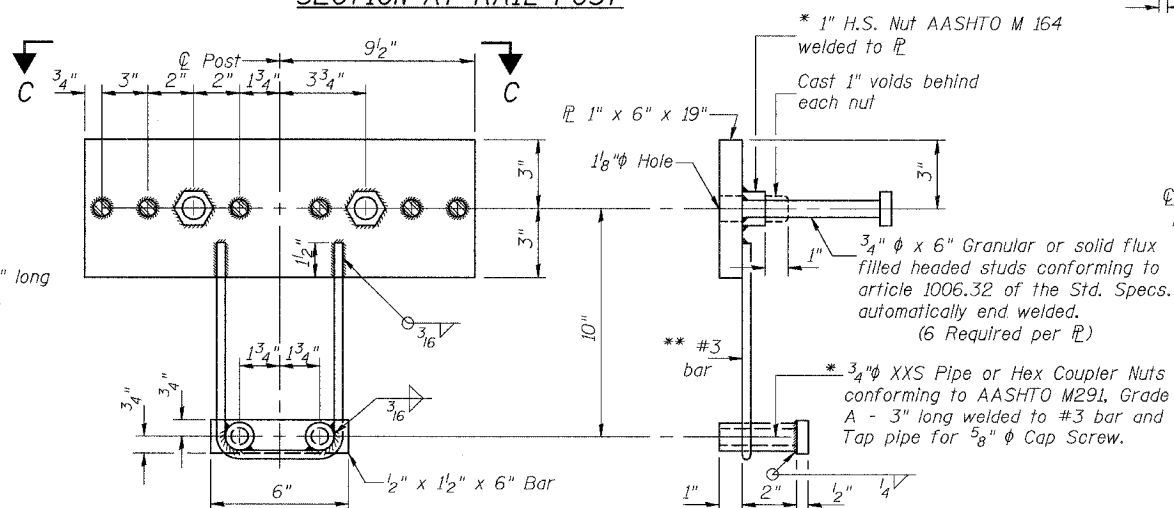
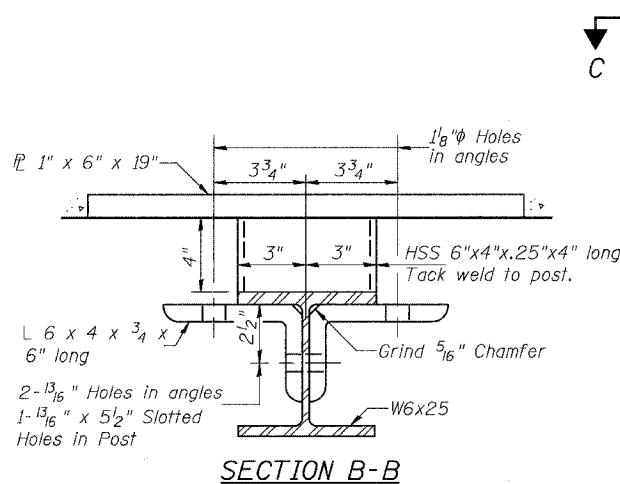
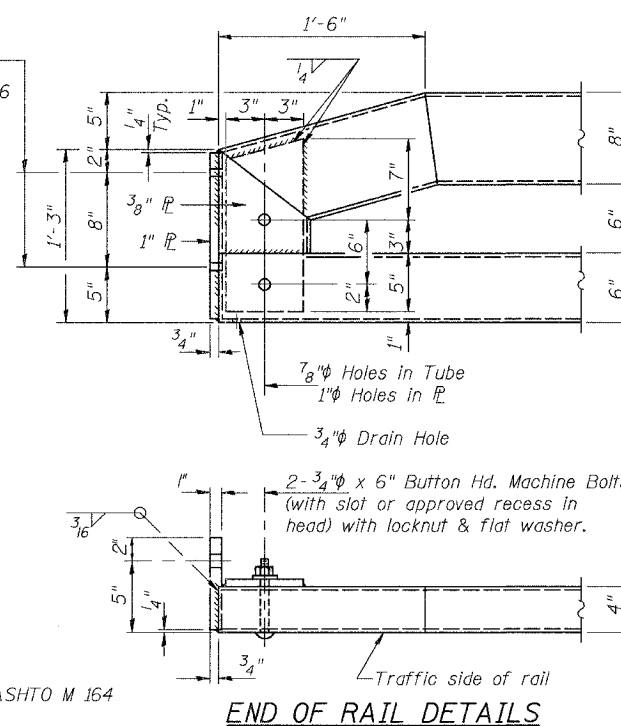
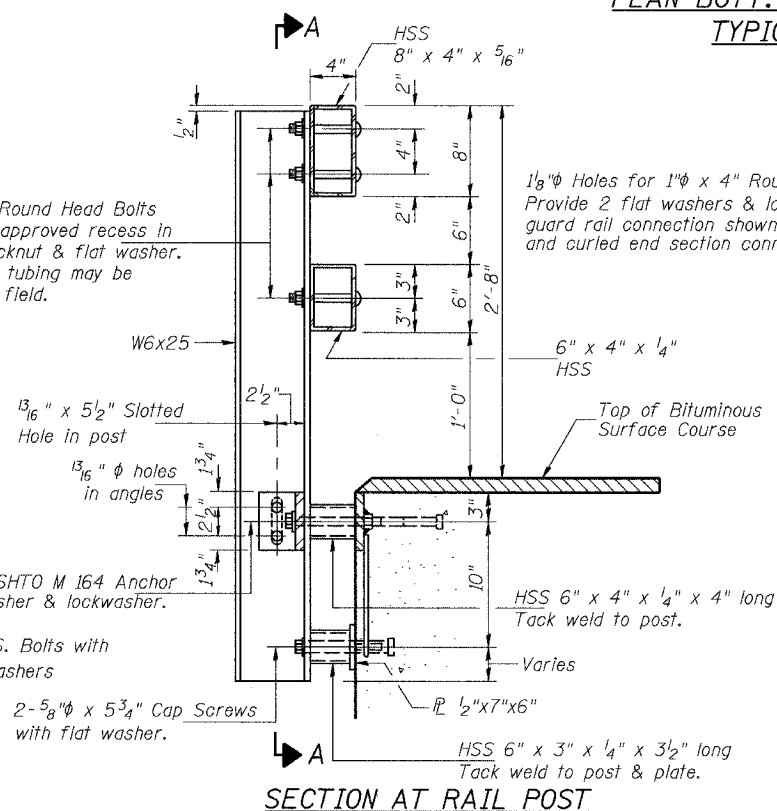
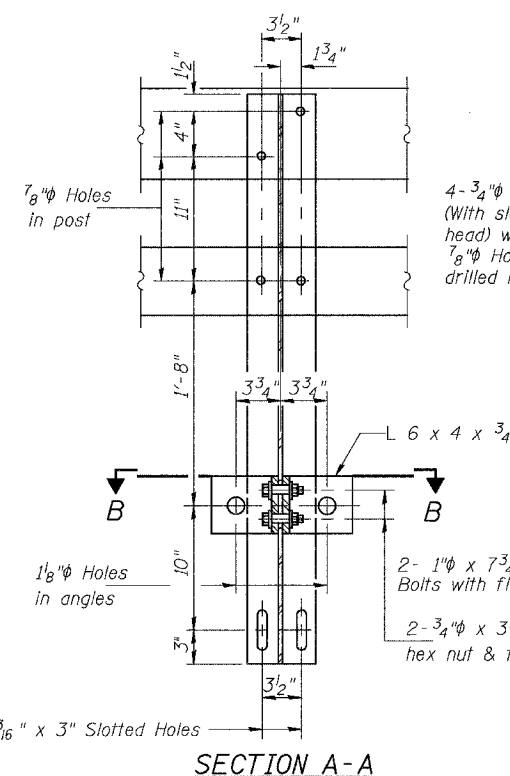
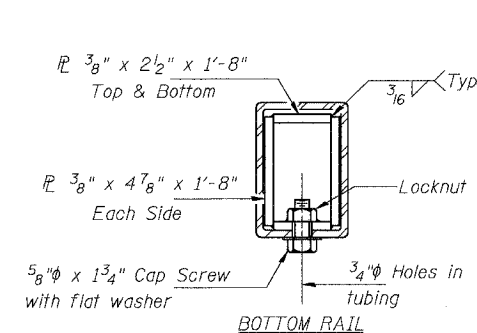
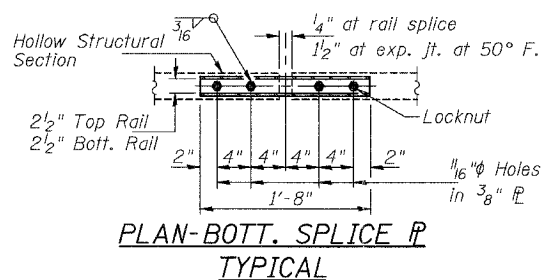
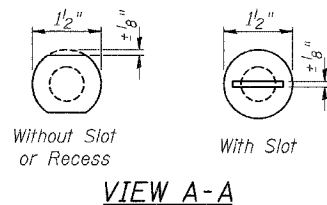
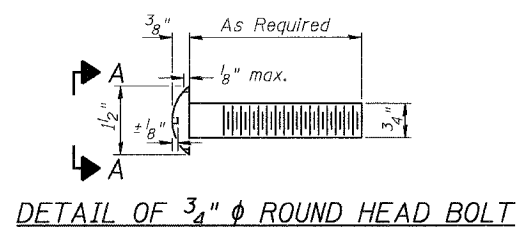
LOADING HS20-44
Allow 50#/sq. ft. future wearing surface.



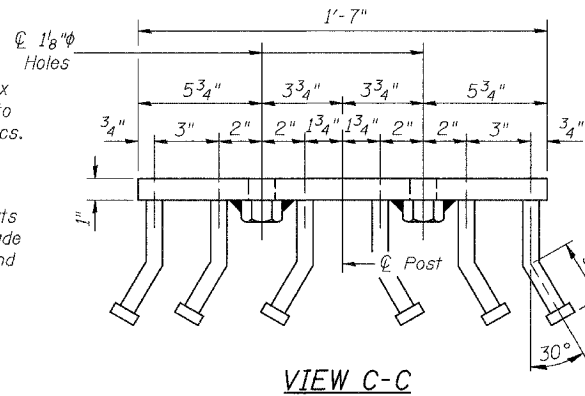
DESIGNED	J.E.H.
CHECKED	J.O.H.
DRAWN	T.A.C./T.R.D.
CHECKED	J.E.H.

ROUTE NO.	SECTION	COUNTY	TOTAL SHEETS	SHEET NO.
**	**	MORGAN	19	12
FED. ROAD DEPT. NO. 7		ILLINOIS	PROJECT	BRM-5032(22)
** CHAMBERS STREET		* 03-00118-00-BR		

FOR RAIL POST SPACING SEE SH.#5 OF 5



END OF RAIL DETAILS



SECTIONS AT RAIL SPLICE

NOTES

Hollow structural sections shall conform to the requirements of ASTM designation A 500 Grade B Structural Steel Tubing and shall meet the longitudinal CVN requirements of 15 ft-lbs at 0° F.

All other steel shapes and plates shall conform to the requirements of AASHTO M 270 Grade 36 except posts and angles shall conform to AASHTO M 270, Grade 50.

Bolts, cap screws, and nuts shall conform to the requirements of ASTM designation A 307 except for high strength bolts, nuts, and washers noted which shall conform to AASHTO M 164.

All bolts, nuts, cap screws, washers, and lock washers shall be galvanized according to AASHTO M 232.

All posts, railing, rail splices, anchor devices, and angles shall be galvanized after shop fabrication according to AASHTO M 111 and ASTM A 385. Galvanized rail shall not be painted.

Railing shall be according to Section 509 of the Standard Specifications, except as noted, and will be paid for at the contract unit price per foot for STEEL BRIDGE RAIL, TYPE SM (SPECIAL).

All field drilled holes shall be coated with an approved zinc rich paint before erection.

The 2" x 7" x 6" plates that come in contact with concrete shall receive two coats of asphalt paint conforming to Section 1060.07 Type II or place 1/8" fabric bearing pads between the plates and concrete.

The 3/4" high strength bolts used to connect the 6 x 4 x 3/4 angles to the post shall be tightened according to Article 505.04(f)(2) of the Standard Specifications. The 1" high strength bolts connecting the angles to the concrete shall be tightened to a snug fit and given an additional 1/8 turn. The 5/8" cap screws in bottom of posts shall be tightened to a snug fit only.

BILL OF MATERIAL

Item	Unit	Quantity
Steel Bridge Rail, Type SM (Special)	FOOT	154

TYPE SM STEEL RAILING
CHAMBERS STREET OVER TOWN BROOK
SECTION 03-00118-00-BR
CITY OF JACKSONVILLE
STATION 11+29.82

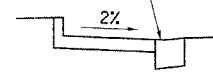
F.A. RTE.	SECTION	COUNTY	TOTAL SHEETS	SHEET NO.
.	**	MORGAN	19	15

FED. ROAD DIST. NO. ILLINOIS FED. AID PROJECT

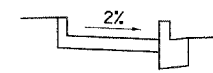
* WEST CHAMBERS ST. **03-00118-00-BR D-96

CONTRACT NO.

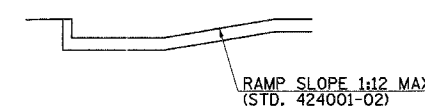
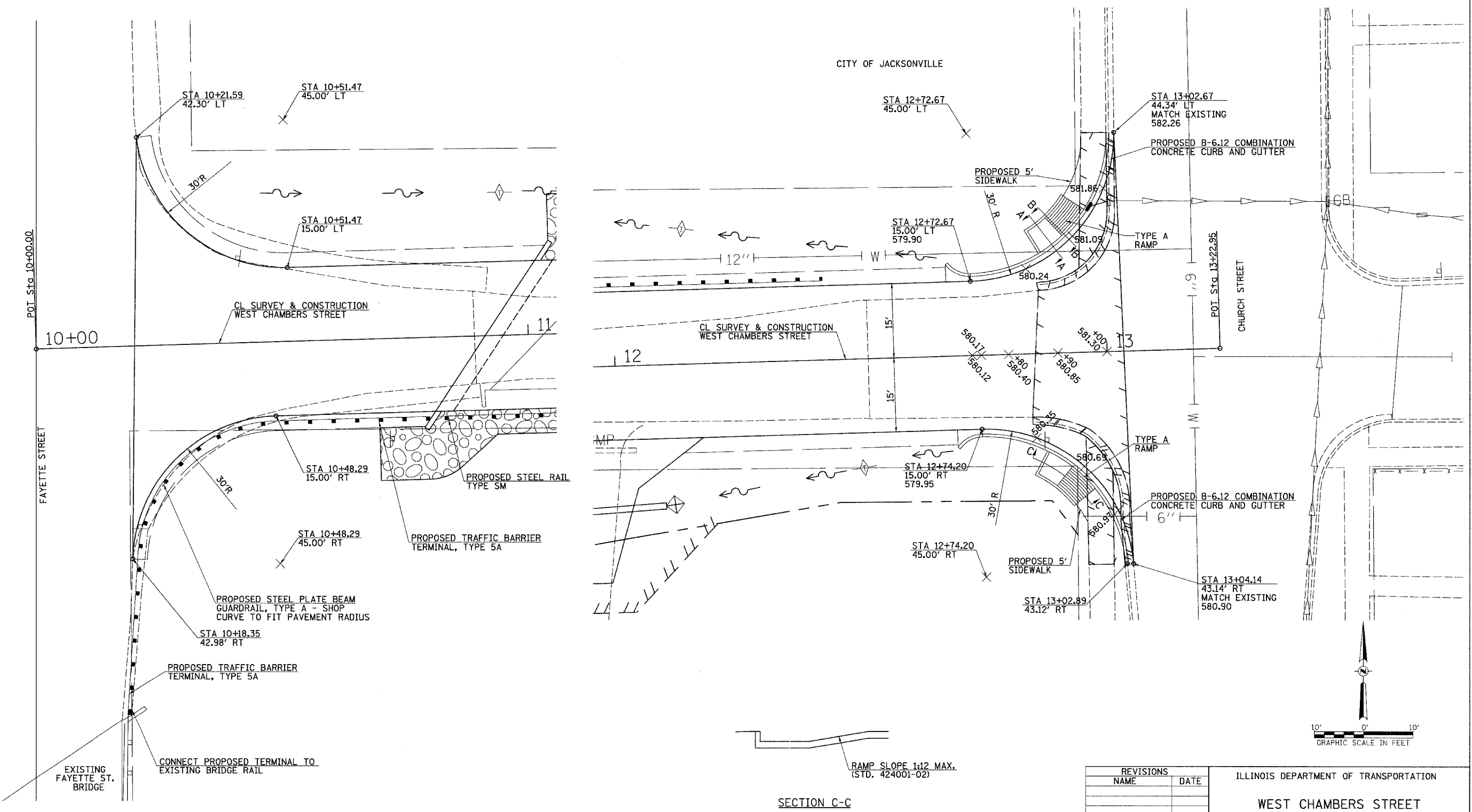
SPECIAL DEPRESSED CURB
(SEE STD. 424001-02)



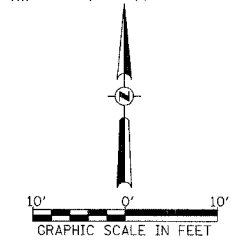
SECTION A-A



SECTION B-B



SECTION C-C



REVISIONS	
NAME	DATE

ILLINOIS DEPARTMENT OF TRANSPORTATION

**WEST CHAMBERS STREET
INTERSECTION DETAILS
FAYETTE STREET &
CHURCH STREET**

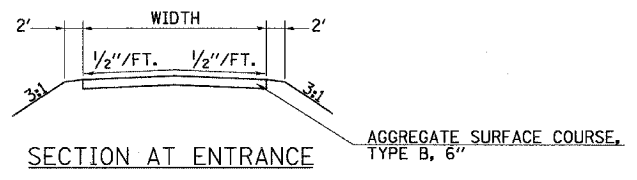
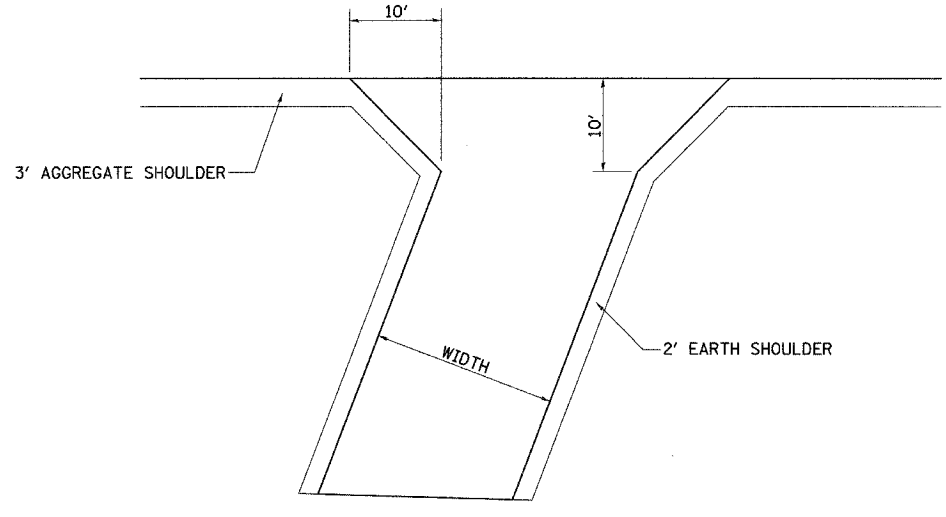
SCALE: VERT. _____
HORIZ. _____

DATE _____ DRAWN BY _____
CHECKED BY _____

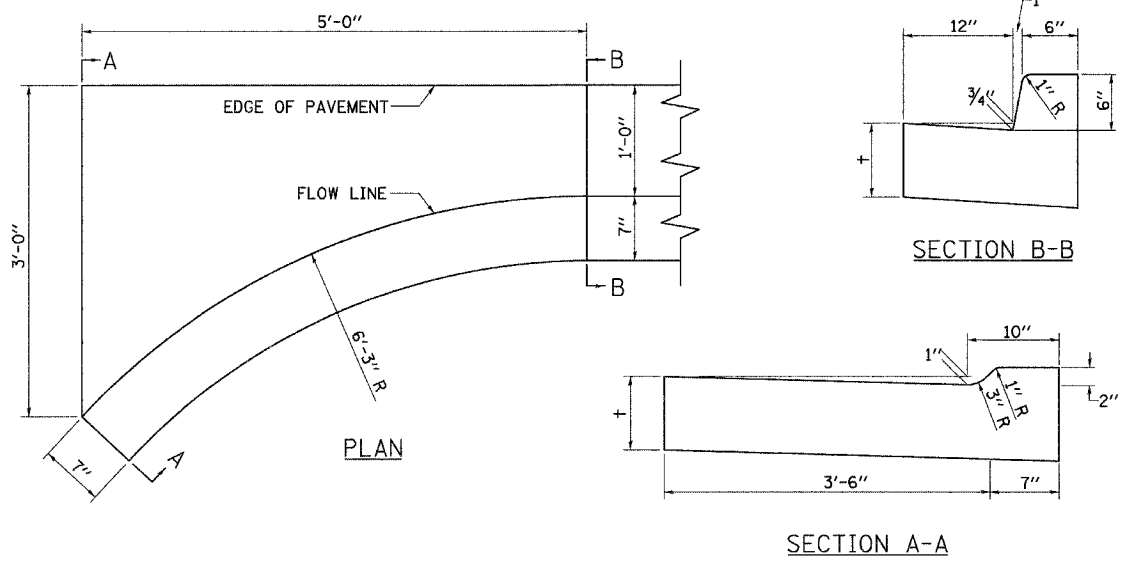
F.A.U. RTE.	SECTION	COUNTY	TOTAL SHEETS	SHEET NO.
*	**	MORGAN	19	16

FED. ROAD DIST. NO. ILLINOIS FED. AID PROJECT
 * WEST CHAMBERS ST. ** 03-0018-00-BR
 D-96

CONTRACT NO.

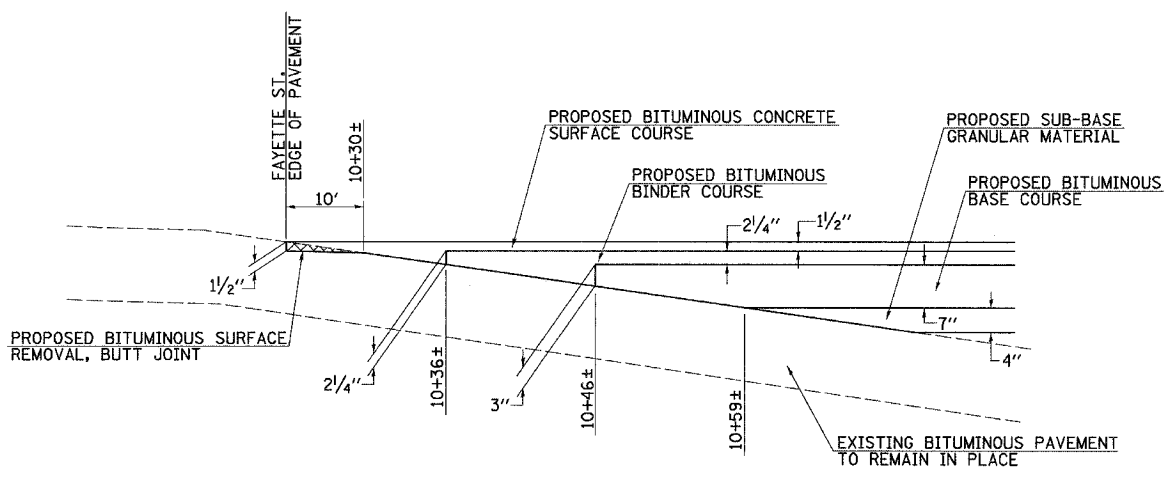


ENTRANCE DETAIL

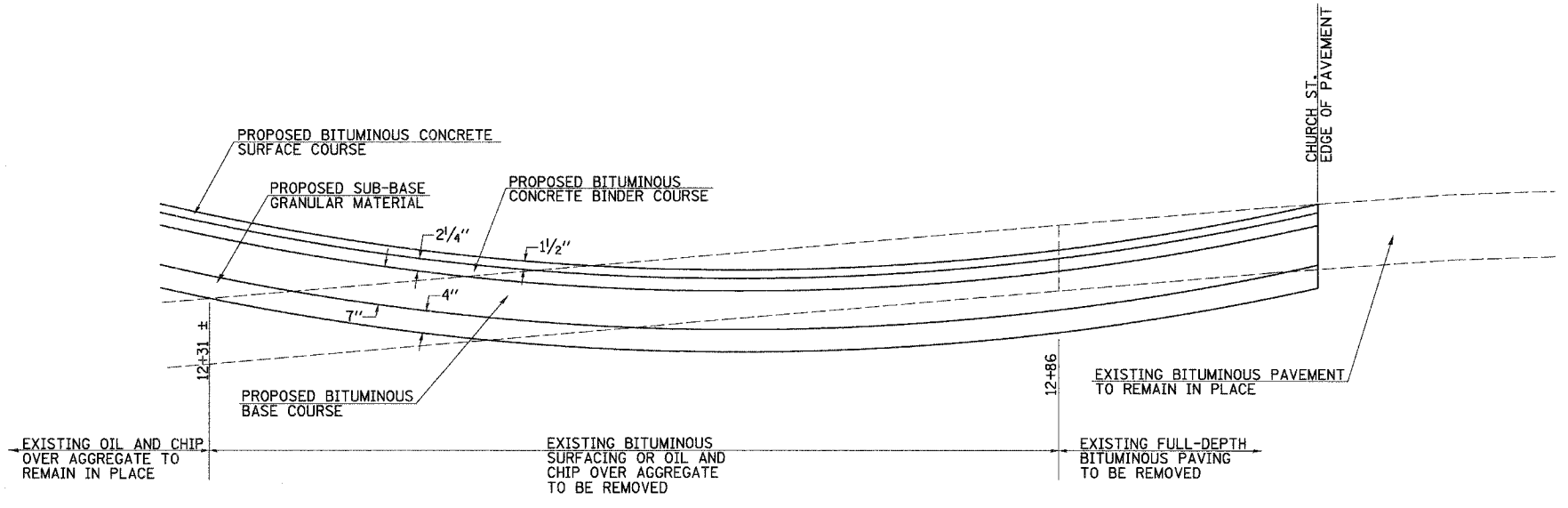


NOTE: TYPE B-6.12 COMBINATION CURB AND GUTTER TAPERS WILL BE PAID FOR AT THE CONTRACT UNIT PRICE PER FOOT FOR COMBINATION CONCRETE CURB AND GUTTER, TYPE B-6.12, AND SHALL BE CONSTRUCTED ACCORDING TO ALL APPLICABLE PORTIONS OF SECTION 606 OF THE STANDARD SPECIFICATIONS.

DETAIL OF TAPER FOR COMBINATION CONCRETE CURB AND GUTTER, TYPE B-6.12



WEST END (FAYETTE STREET)



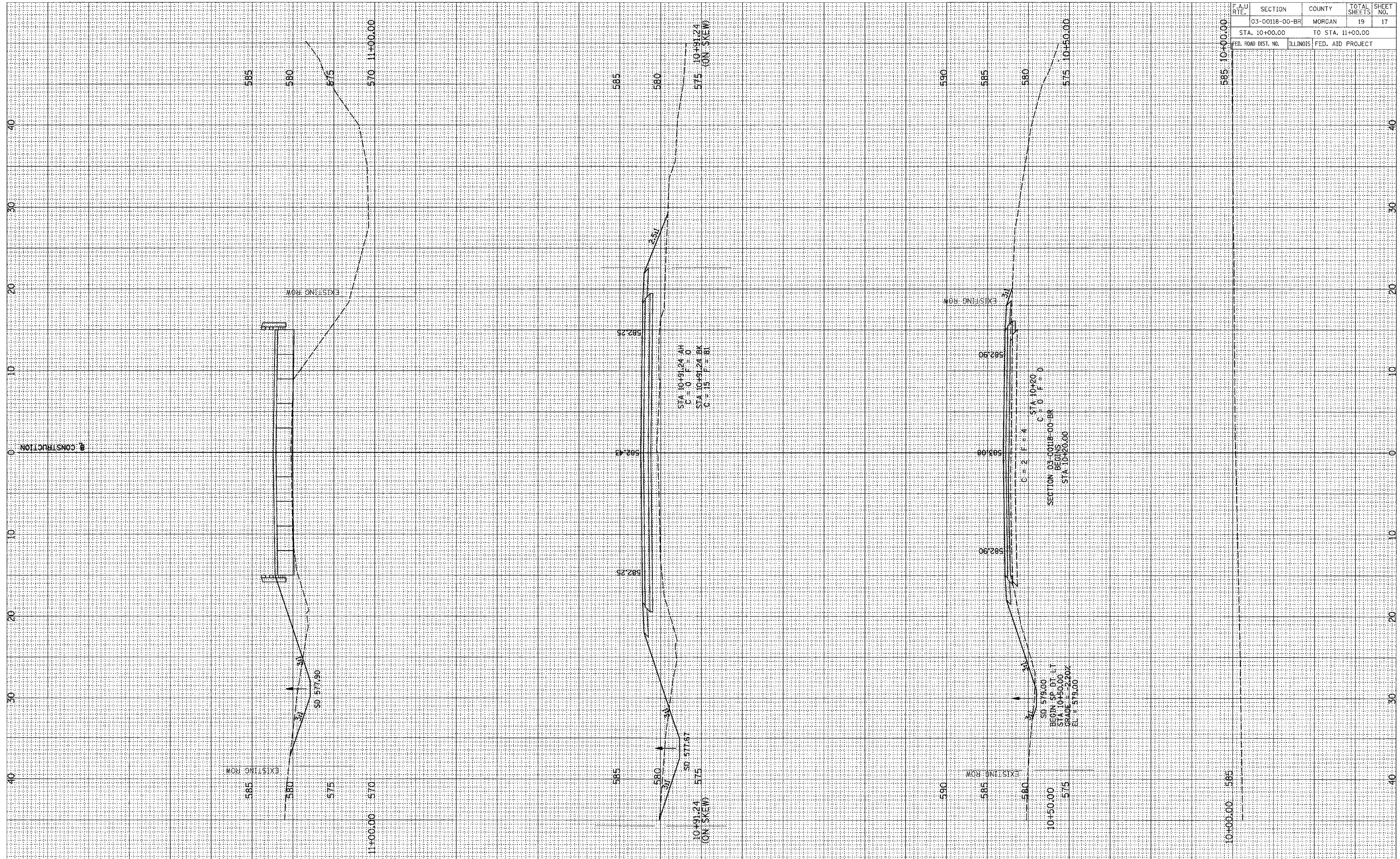
EAST END (CHURCH STREET)

PAVEMENT DETAILS

REVISIONS	
NAME	DATE

ILLINOIS DEPARTMENT OF TRANSPORTATION
 SPECIAL DETAILS
 DRAWN BY
 CHECKED BY
 DATE

F.A.U. RTE.	SECTION	COUNTY	TOTAL SHEETS	SHEET NO.
	03-00118-00-BR	MORGAN	19	17
STA. 10+00.00		TO STA. 11+00.00		
FED. ROAD DIST. NO.		ILLINOIS FED. AID PROJECT		



SURVEYED SURVEY
NOTE BOOK
NO. _____

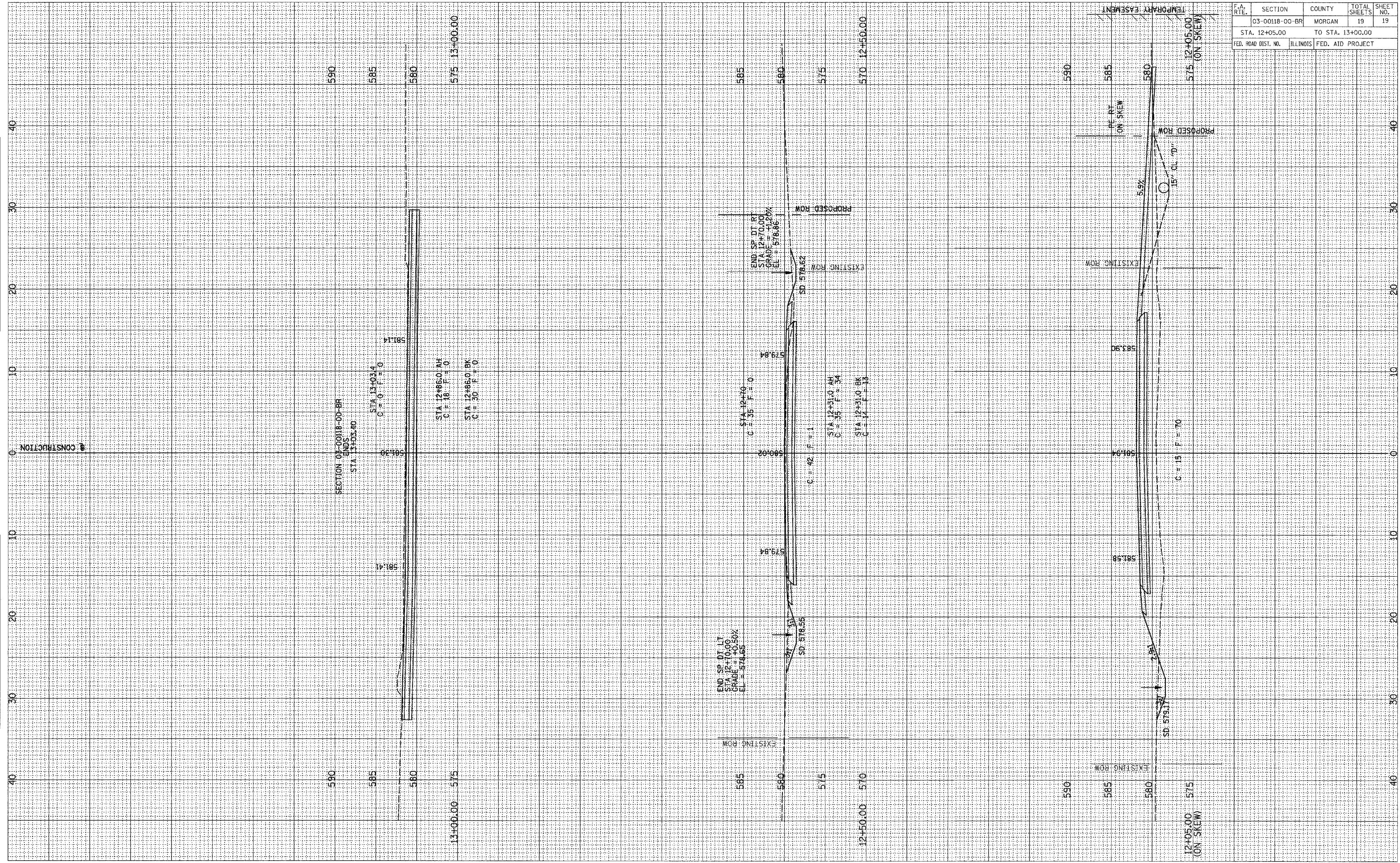
TEMPLATE
AREAS CHECKED _____

SURVEYED SURVEY
NOTE BOOK
NO. _____

TEMPLATE
AREAS CHECKED _____

1:2024-08-01 10:24:00 AM

F.A. RTE.	SECTION	COUNTY	TOTAL SHEETS	SHEET NO.
	03-00118-00-BR	MORGAN	19	19
STA. 12+05.00		TO STA. 13+00.00		
FED. ROAD DIST. NO. ILLINOIS		FED. AID PROJECT		



CHAMBERS STREET CROSS SECTIONS

NOTE BOOK NO. REPORTED AREAS CHECKED

NOTE BOOK NO. REPORTED AREAS CHECKED