

| ROUTE NO. | SECTION | COUNTY | LOTS | SHEET |
|---------------------|----------------|----------|------------------|-------|
| C.H. 12 | 00-00075-00-PV | MACOUPIN | 37 | 1 |
| FED. ROAD DIST. NO. | | ILLINOIS | FED. AID PROJECT | |

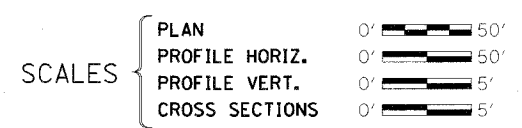
STATE OF ILLINOIS DEPARTMENT OF TRANSPORTATION DIVISION OF HIGHWAYS PLANS FOR PROPOSED SURFACE TRANSPORTATION PROGRAM – RURAL

INDEX OF SHEETS

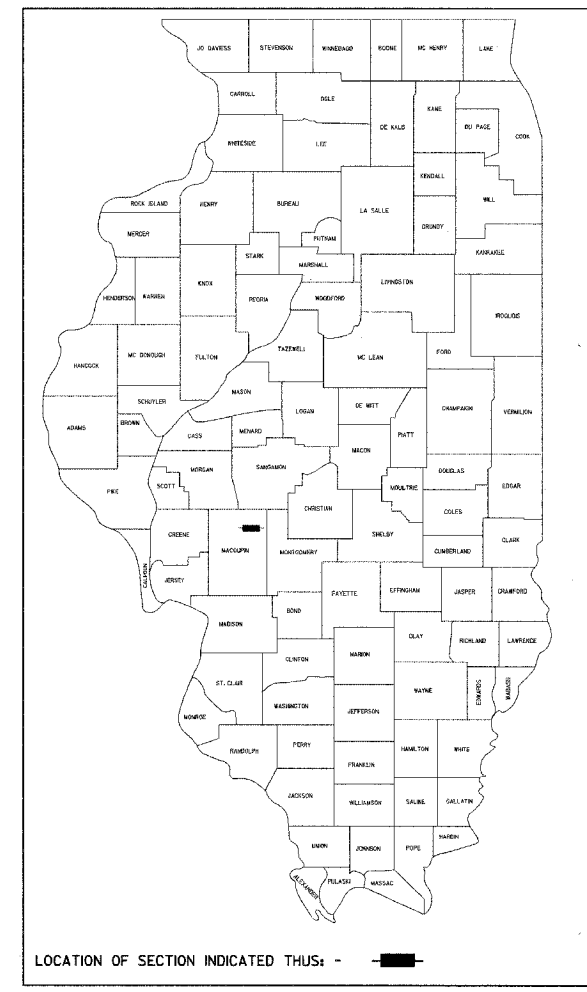
- 1. COVER SHEET
- 2. SUMMARY OF QUANTITIES AND GENERAL NOTES
- 3.-8. SCHEDULE OF QUANTITIES
- 9. TYPICAL SECTIONS
- 10. BUTT JOINT DETAIL & MIXTURE REQUIREMENTS
- 11.-26. PLAN AND PROFILE SHEETS - C.H. 12
- 27. ROADWAY DETAILS
- 28. RAILROAD CROSSING DETAILS
- 29.-34. PAVEMENT MARKING PLAN
- 35.-36. EROSION CONTROL PLAN
- 37. ROAD CLOSURE & TRAFFIC CONTROL

STANDARDS

- 000001-04 STANDARD SYMBOLS, ABBREVIATIONS, AND PATTERNS
- 001006 DECIMAL OF AN INCH AND OF A FOOT
- 542401 METAL END SECTION FOR PIPE CULVERTS
- 601001 SUB-SURFACE DRAINS
- 601101 CONCRETE HEADWALL FOR PIPE DRAIN
- 280001-02 TEMPORARY EROSION CONTROL SYSTEMS
- 630001-05 STEELPLATE BEAM GUARDRAIL
- 630301-03 SHOULDER WIDENING FOR TYPE 1, (SPECIAL) GUARDRAIL TERMINALS
- 635006-02 REFLECTOR AND TERMINAL MARKER PLACEMENT
- 635011-01 REFLECTOR MARKER AND MOUNTING DETAILS
- 701006-02 OFF ROAD OPERATIONS, 2L, 2W, 4.5m (15') to 600mm (24") FROM EDGE OF PAVEMENT
- 701011-01 OFF-ROAD MOVING OPERATIONS 2L, 2W, DAY ONLY FOR SPEEDS ≥ 45 MPH
- 701306-01 LANE CLOSURE, 2L, 2W, SLOW MOVING OPERATIONS DAY ONLY, FOR SPEEDS > 45 MPH
- 701311-02 LANE CLOSURE, 2L, 2W, MOVING OPERATIONS - DAY ONLY
- 702001-05 TRAFFIC CONTROL DEVICES
- 780001-01 TYPICAL PAVEMENT MARKINGS
- 781001-02 TYPICAL APPLICATIONS RAISED REFLECTIVE PAVEMENT MARKERS
- B.L.R. 21-6 TYPICAL APPLICATION OF TRAFFIC CONTROL DEVICES FOR CONSTRUCTION ON RURAL LOCAL HIGHWAYS



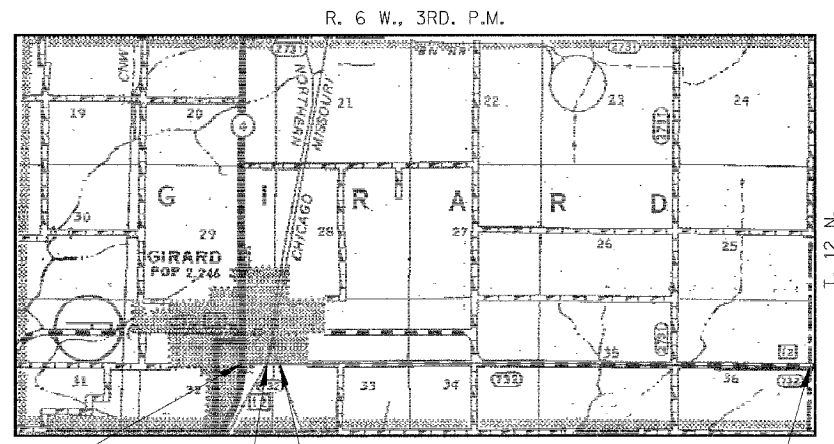
SECTION 00-00075-00-PV FAS 732 C.H. 12 (FARMERSVILLE ROAD) MACOUPIN COUNTY PROJECT SR-732 (145) C-96-234-04



5/4" BITUMINOUS OVERLAY ON A 7 1/2" PROCESSED SOIL CEMENT BASE COURSE WITH AGGREGATE SHOULDERS, UNDERDRAIN INSTALLATION, VERTICAL ADJUSTMENT OF GUARDRAIL, TRAFFIC BARRIER TERMINAL AND MISCELLANEOUS BITUMINOUS RESURFACING.

UTILITIES

- AT&T
620 SOUTH FIFTH STREET
SPRINGFIELD, IL 62701
- AMEREN CIPS
222 N. CHURCH
VIRDEN, IL 62690
- CHARTER COMMUNICATIONS
11 CLEARING
TAYLORVILLE, IL 62568
- CITY OF GIRARD PUBLIC WORKS
GIRARD, IL 62640
- VERIZON NORTH, INC.
1312 EAST EMPIRE
PO BOX 2955
BLOOMINGTON, IL 61701
- MCI
2250 LAKESIDE BOULEVARD
RICHARDSON, TX 75082
- RURAL ELECTRIC CONVENIENCE CO-OP
EAST ROUT 104
PO BOX 19
AUBURN, IL 62615
- SPRINT
5600 NORTH RIVER ROAD, SUITE 500
ROSEMONT, IL 60018



IMPROVEMENT BEGINS STATION 10+1.00

IMPROVEMENT ENDS STATION 236+09.04

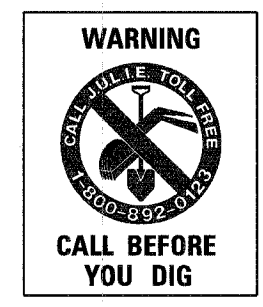
U.P. RAILROAD WEST TRACK OMISSION STA. 17+19.30 TO STA. 17+29.73
U.P. RAILROAD EAST TRACK OMISSION STA. 17+33.80 TO STA. 17+44.20

B.N. RAILROAD TRACK OMISSION STA. 24+19.76 TO STA. 24+29.99

LAYOUT

APPROXIMATE SCALE: 0 1 MILE

GROSS LENGTH OF SECTION = 22,598.04 FEET = 4.280 MILES
NET LENGTH OF SECTION = 22,566.98 FEET = 4.274 MILES



APPROVED 3-14 20 05
Thomas A Reinhart
COUNTY ENGINEER

PASSED APRIL 6 20 05
Jimmy Furt
DISTRICT ENGINEER OF LOCAL ROADS & STREETS

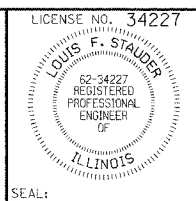
APPROVED APRIL 6 20 05
U.R. Jones 4/6/05
DISTRICT CONSTRUCTION ENGINEER

APPROVED APRIL 6 20 05
Christine M Reed
REGIONAL ENGINEER
STATE OF ILLINOIS
DEPARTMENT OF TRANSPORTATION

DATE: 3-14-2005

BY: *Louis F. Stauder*

LICENSE EXPIRES: NOVEMBER 30, 2005



HLR
Rice, Berry and Associates
A Division of Hampton, Lenzini and Renwick, Inc.
Civil & Structural Engineers
801 S. Durkin Drive
Springfield, Illinois 62704
217-546-3400
P.O. Box 1036
DuQuoin, Illinois 62832
618-790-4637