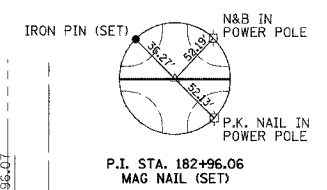


STANLEY ROVEY, ETUX
NE 1/4, SEC 35, T. 12 N., R. 6 W., 3RD P.M.

C.H.	SECTION	COUNTY	TOTAL SHEETS	SHEET NO.
12	00-00075-00-PV	MACOUPIN	37	22
STA. 171+00.00		TO STA. 186+00.00		
FED. ROAD DIST. NO.		ILLINOIS FED. AID PROJECT		

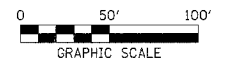
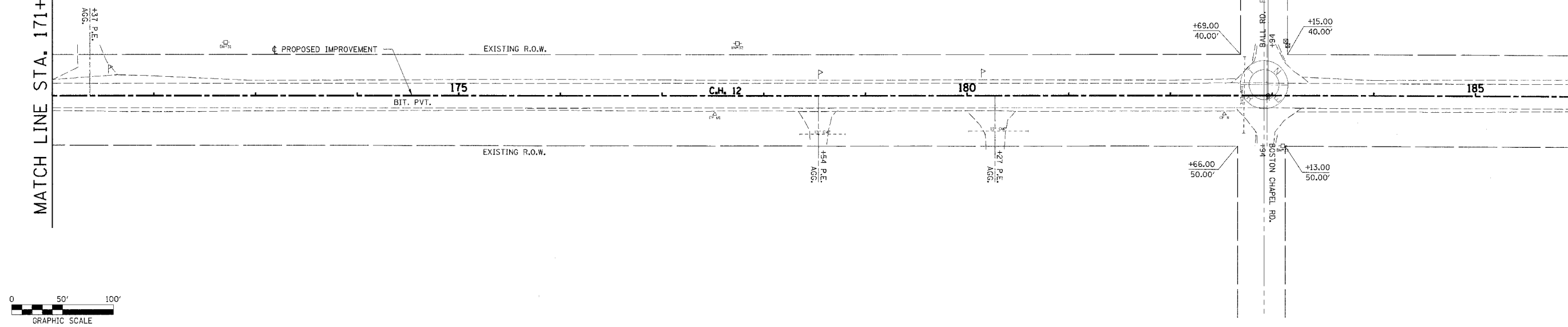
LEWIS BALL
NW 1/4, SEC 36, T. 12 N., R. 6 W., 3RD P.M.



CURVE DATA
P.I. STA. 182+96.07
 $\Delta = 0^\circ 12' 27''$ (RT)
NO CURVE

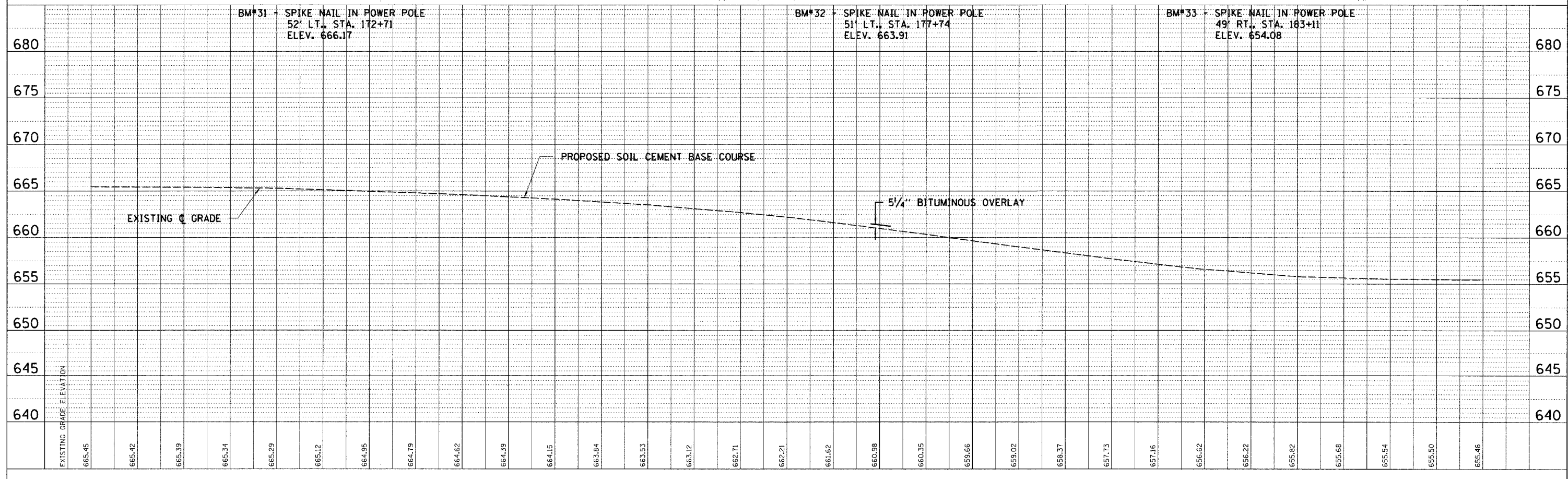
MATCH LINE STA. 171+00

MATCH LINE STA. 186+00



HAYDEN & BETTY KESSINGER
SE 1/4, SEC 35, T. 12 N., R. 6 W., 3RD P.M.

JERRY B. LLOYD
SW 1/4, SEC 36, T. 12 N., R. 6 W., 3RD P.M.



PLAN	DESIGNED	DATE
NOTE BOOK	BY	
NO. AND DATE	BY	
CAD FILE NAME	BY	
DESCRIPTION	BY	

PROFILE	DESIGNED	DATE
GRADES CHECKED	BY	
STRUCTURE NOTATIONS CHECKED	BY	
NO.	BY	