

CONTRACT No. 93396

COUNTY	ROUTE	SECTION	TOTAL SHEETS	SHEET NO.
ADAMS	FAS 2593	05-00193-00-RS	12	1

INDEX OF SHEETS:

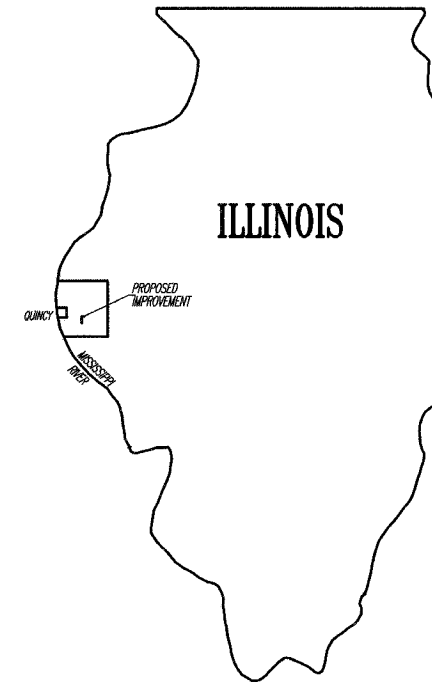
SHEET NO.	SHEET
1	TITLE SHEET
2	SUMMARY OF QUANTITIES
	GENERAL NOTES
3	TYPICAL CROSS SECTIONS
4-11	PLAN SHEETS
12	SIDE ROAD & ENTRANCE DETAILS
	BUTT JOINT DETAIL

STANDARD	701301-02
STANDARD	701306-01
STANDARD	702001-05
STANDARD	BLR 24-1

STATE OF ILLINOIS  
DEPARTMENT OF TRANSPORTATION  
DIVISION OF HIGHWAYS  
PLANS FOR PROPOSED  
SURFACE TRANSPORTATION/RURAL PROGRAM  
LOCAL AGENCY PAVEMENT PRESERVATION

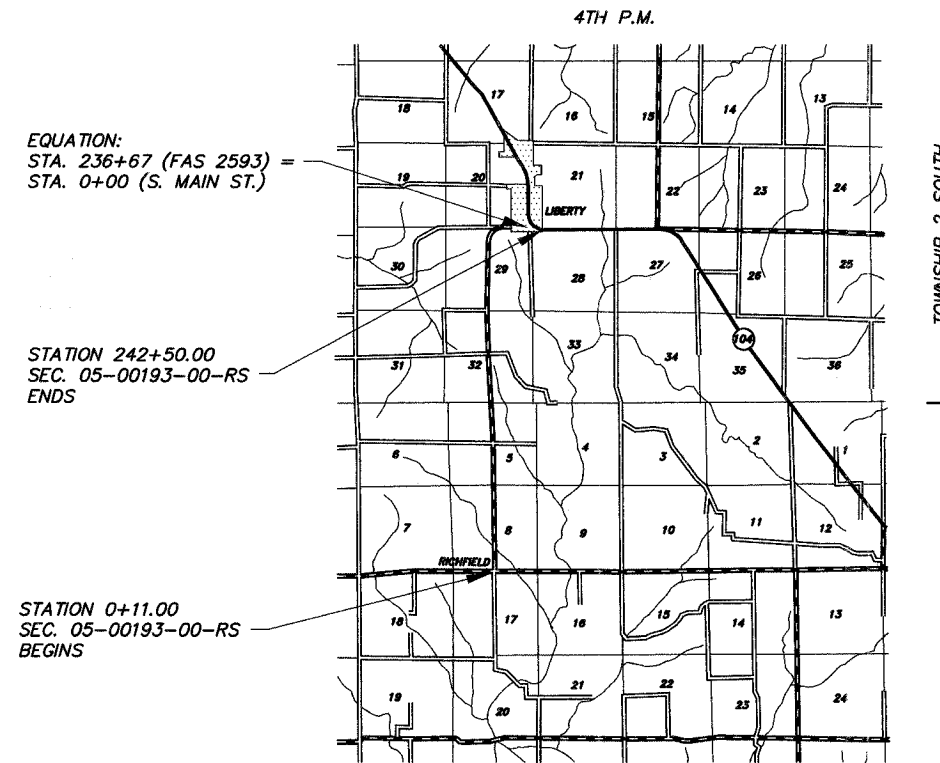
(C.H. 43) FAS 2593      SECTION 05-00193-00-RS      ADAMS COUNTY  
PROJECT NO. RS-2593(101)      JOB NO. C-96-212-05



PROPOSED IMPROVEMENT MARKED THUS —

THESE PLANS WERE PREPARED BY ME OR BY A FULL-TIME MEMBER OF MY STAFF WORKING UNDER MY PERSONAL SUPERVISION.

SUBMITTED BY Richard A. Klump DATE 4-14-05  
COUNTY ENGINEER  
LICENSE NO. 062-032961  
LIC. EXPIRES 11/30/2005



RANGE 6 WEST  
**LOCATION MAP**

FUNCTIONAL CLASS: MAJOR COLLECTOR (NON-URBAN)  
ADT = 650

PROPOSED IMPROVEMENT CONSISTS OF PLACING 2" POLYMERIZED BITUMINOUS CONCRETE SURFACE COURSE, SUPERPAVE, MIX "C", N50 ON THE EXISTING 22' ROADWAY WITH OTHER MISCELLANEOUS CONSTRUCTION

**UTILITIES:**

J.U.L.I.E. .... 1-800-892-0123  
AMERITECH ..... QUINCY, IL  
ADAMS RURAL ELECTRICAL CO-OP ..... CAMP POINT, IL  
AMEREN CIPS ..... QUINCY, IL  
CLAYTON-CAMP POINT WATER DISTRICT .... CLAYTON, IL

GROSS LENGTH:  
STA. 0+11.00 TO STA. 242+50.00 = 24,239.00 FT.  
STA. 0+00.00 TO STA. 5+69.68 = 569.68 FT.  
NET LENGTH TO BE IMPROVED: 24,808.68 FT. = 4.699 MILES

APPROVED <u>April 14</u> 2005 <u>Richard A. Klump</u> COUNTY ENGINEER
PASSED <u>April 19</u> 2005 <u>L.B. Jany</u> DISTRICT ENGINEER OF CONSTRUCTION
PASSED <u>APRIL 19</u> 2005 <u>Tom Ford</u> DISTRICT ENGINEER OF LOCAL ROADS AND STREETS
APPROVED <u>APRIL 19</u> 2005 <u>Christine M. Reed</u> DEPUTY DIRECTOR OF HIGHWAYS REGION FOUR ENGINEER

**STATE OF ILLINOIS  
DEPARTMENT OF TRANSPORTATION**

CONTRACT NO. **93396**

ADAMS COUNTY      SECTION 05-00193-00-RS      ROUTE FAS 2593

COUNTY	ROUTE	SECTION	TOTAL SHEETS	SHEET NO.
ADAMS	FAS 2593	05-00193-00-RS	12	2
SUMMARY OF QUANTITIES - GENERAL NOTES				

## GENERAL NOTES

1. WHERE SECTION OR SUB-SECTION STONES, USGS BENCH MARK MONUMENTS, AND U.S. ARMY CORPS OF ENGINEERS SURVEY MARKERS ARE ENCOUNTERED, THE ENGINEER SHALL BE NOTIFIED BEFORE SUCH STONES AND MONUMENTS ARE REMOVED. THE CONTRACTOR SHALL PROTECT AND CAREFULLY PRESERVE ALL PROPERTY MARKS UNTIL AN OWNER, AN AUTHORIZED SURVEYOR OR THEIR REPRESENTATIVE HAS WITNESSED OR OTHERWISE REFERENCED THE PROPERTY MARKS LOCATION.
2. ALL PRIVATELY OWNED UTILITIES, UNLESS OTHERWISE SPECIFIED, WILL BE MOVED BY THEIR RESPECTIVE OWNERS WHERE REQUIRED. THE FOLLOWING UTILITY COMPANIES HAVE FACILITIES WITHIN THE LIMITS OF CONSTRUCTION:
  - AMERITECH
  - ADAMS RURAL ELECTRICAL CO--OP
  - AMEREN CIPS
  - CLAYTON - CAMP POINT WATER DISTRICT
3. THE NOMINAL THICKNESS FOR THE LEVELING BINDER, SURFACE COURSES AND AGGREGATE SHOULDERS ARE SHOWN ON THE TYPICAL SECTIONS, STANDARDS, SCHEDULES OR SPECIAL DETAILS. THE CONSTRUCTED THICKNESS OF THE ABOVE ITEMS SHALL NOT BE LESS THAN 90% OF THE NOMINAL THICKNESS AT ANY LOCATION. THE THICKNESS OF BITUMINOUS MIXTURE SHOWN ON THE PLANS IS THE NOMINAL THICKNESS. DEVIATIONS FROM THE NOMINAL THICKNESS WILL BE PERMITTED WHEN SUCH DEVIATIONS OCCUR DUE TO IRREGULARITIES IN THE EXISTING SURFACE OR BASE WHICH THE BITUMINOUS MIXTURE IS PLACED.
4. THE CONTRACTOR SHALL BE RESPONSIBLE FOR DETERMINING THE LOCATION AND ELEVATION OF ALL EXISTING UTILITIES AND TO NOTIFY ALL UTILITY COMPANIES PRIOR TO THE BEGINNING OF CONSTRUCTION. THIS WILL BE CONSIDERED INCIDENTAL TO THE CONTRACT.
5. APPLICATION RATES SHALL BE AS FOLLOWS UNLESS OTHERWISE SPECIFIED BY THE ENGINEER:
  - BITUMINOUS MIXTURES  
112 LBS PER SQUARE YARD
  - BITUMINOUS MATERIALS (PRIME COAT)  
0.05-0.10 GALLON PER SQUARE YARD ON PCC OR BITUMINOUS CONCRETE  
0.25-0.35 GALLON PER SQUARE YARD ON AGGREGATE
  - AGGREGATE (PRIME COAT)  
4 LBS PER SQUARE YARD
6. PERMANENT & TEMPORARY PAVEMENT MARKING TO BE DONE BY OTHERS. SHORT TERM PAVEMENT MARKING IS INCLUDED IN THE CONTRACT. THE REMOVAL OF THE SHORT TERM PAVEMENT MARKING TAPE WILL BE DONE BY OTHERS UPON COMPLETION OF THE PERMANENT PAVEMENT MARKING.

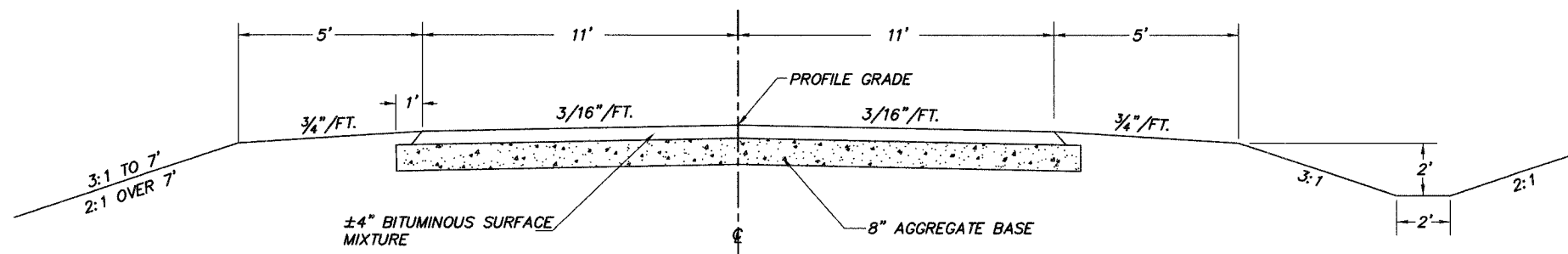
## SUMMARY OF QUANTITIES

QUANTITY	UNIT	ITEM	CODE NO.	SPECIAL PROVISIONS
158	TON	BITUMINOUS CONCRETE SURFACE COURSE, SUPERPAVE, MIX "C", N50	X4066414	*
6,685	TON	POLYMERIZED BITUMINOUS CONCRETE SURFACE COURSE, SUPERPAVE, MIX "C", N50	X4066514	*
1,023	TON	LEVELING BINDER (MACHINE METHOD), SUPERPAVE N50	X4066765	*
5,789	GALLON	BITUMINOUS MATERIALS (PRIME COAT)	40600100	*
116	TON	AGGREGATE (PRIME COAT)	40600300	
300	SQ. YD.	BITUMINOUS SURFACE REMOVAL - BUTT JOINT	40600980	*
150	SQ. YD.	TEMPORARY RAMP	40600990	
1	L. SUM	TRAFFIC CONTROL AND PROTECTION	70101700	*
2,738	FOOT	SHORT TERM PAVEMENT MARKING	70300100	*

CONSTRUCTION TYPE CODE: 1000

COUNTY	ROUTE	SECTION	TOTAL SHEETS	SHEET NO.
ADAMS	FAS 2593	05-00193-00-RS	12	3
TYPICAL CROSS SECTIONS				

# TYPICAL CROSS SECTIONS

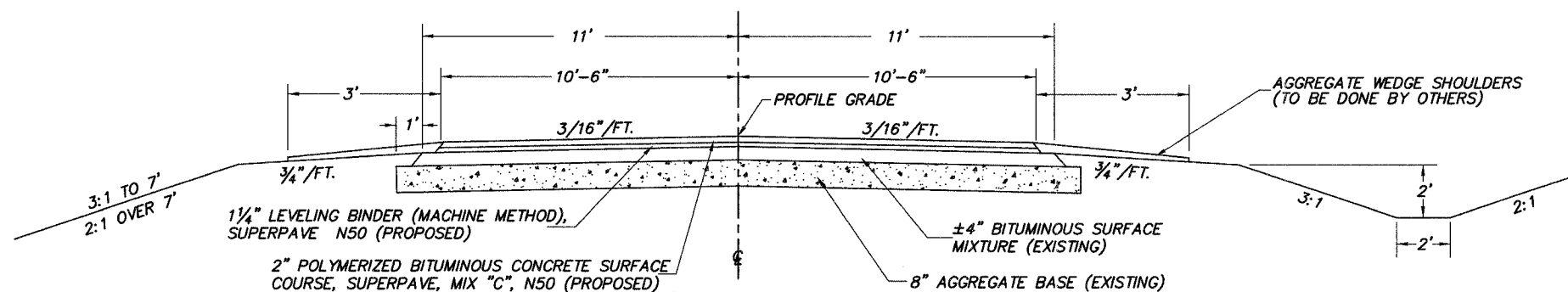


## EXISTING CROSS SECTION

BUILT AS: SECTION 61G

### CLASS I BITUMINOUS MIXTURE REQUIREMENTS

ITEM	ASPHALT GRADE	AGG. COMPOSITION	ALLOWABLE RAP	VOIDS
POLY. SURFACE	SBS PG 64-28	IL-9.5 or 12.5 MIX C	0%	4.0% @ N50
SURFACE	PG 58-22	IL-9.5 or 12.5 MIX C	15%	4.0% @ N50
LEVELING BINDER	PG 58-22	IL-9.5	15%	4.0% @ N50

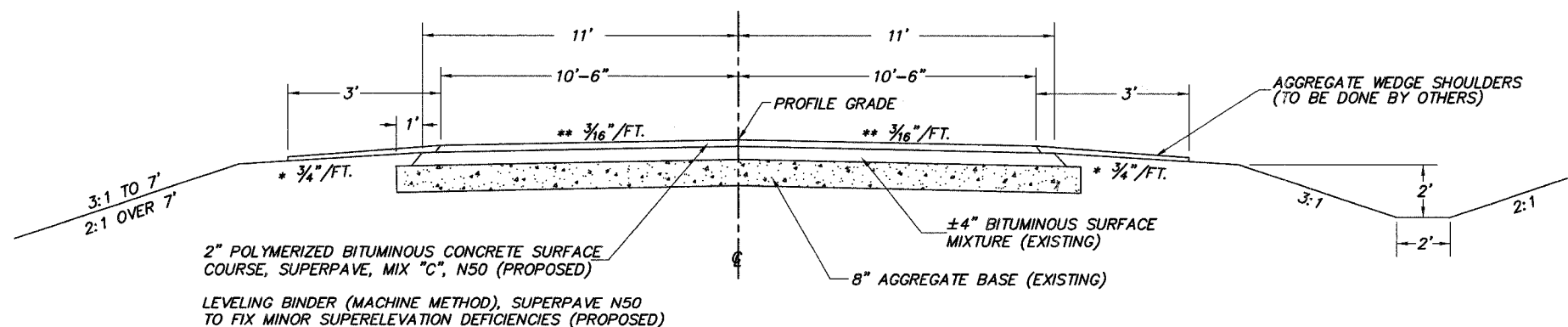


## PROPOSED CROSS SECTION

STA. 0+25 TO STA. 26+00

LEVELING BINDER (MACHINE METHOD), SUPERPAVE N50 TO FIX MINOR SUPERELEVATION DEFICIENCIES

STA. TO STA.	TONS
95+32.5 TO 101+89.2	137
112+27.2 TO 119+33.4	148
205+93.1 TO 219+68.9	304
<b>TOTAL</b>	<b>589</b>



## PROPOSED CROSS SECTION

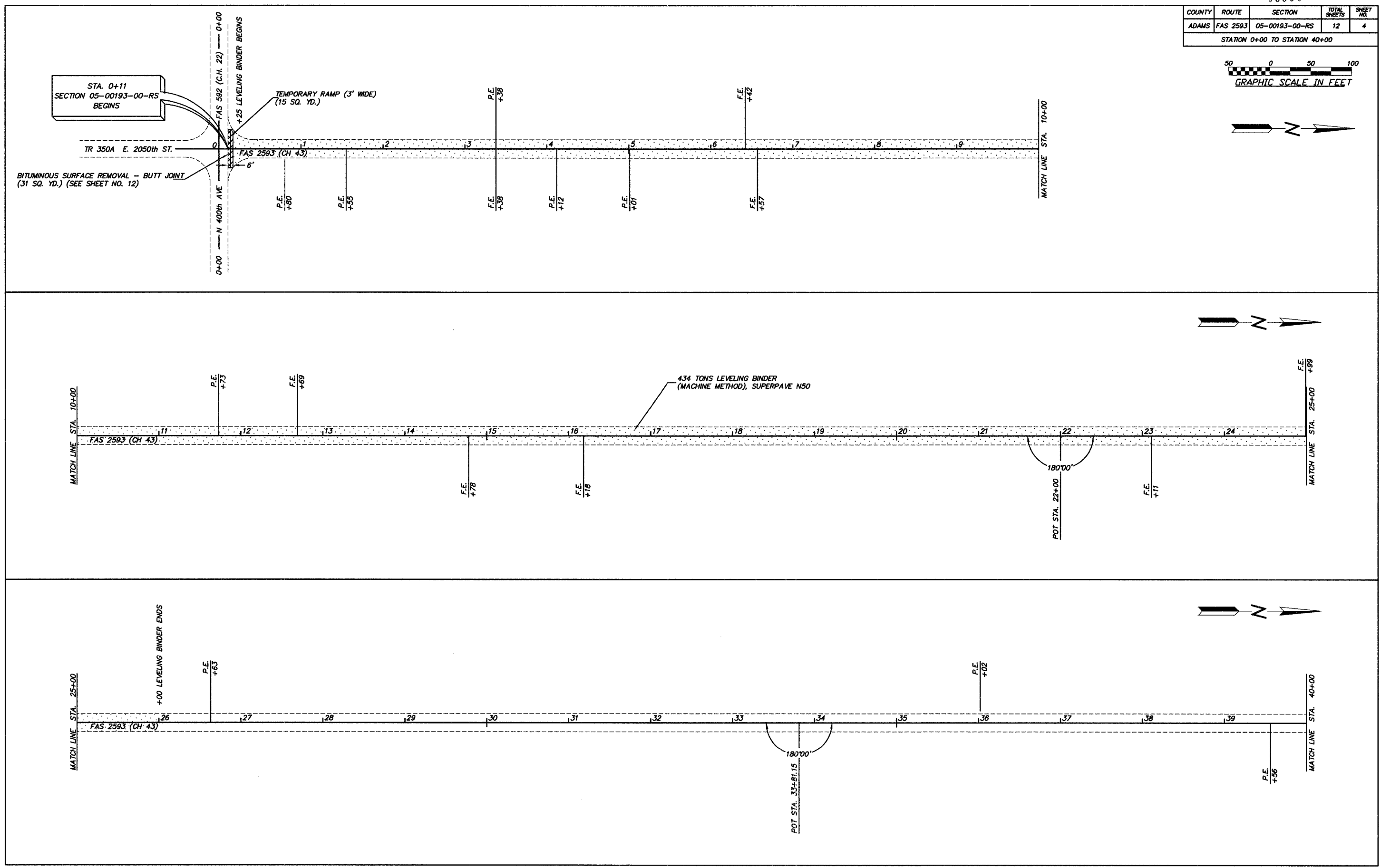
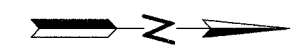
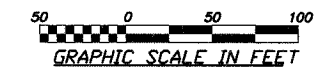
STA. 26+00 TO STA. 242+50  
STA. 0+11 TO STA. 5+69.68 (S. MAIN ST.)

\* THE ALGEBRAIC DIFFERENCE BETWEEN THE SHOULDER SLOPE AND THE PAVEMENT SLOPE SHALL NOT EXCEED 10%

\*\* CROWN DOES NOT APPLY IN AREA OF SUPER-ELEVATION OR SUPER-ELEVATION TRANSITION.

COUNTY	ROUTE	SECTION	TOTAL SHEETS	SHEET NO.
ADAMS	FAS 2593	05-00193-00-RS	12	4

STATION 0+00 TO STATION 40+00



STA. 0+11  
SECTION 05-00193-00-RS  
BEGINS

BITUMINOUS SURFACE REMOVAL - BUTT JOINT  
(31 SQ. YD.) (SEE SHEET NO. 12)

TEMPORARY RAMP (3' WIDE)  
(15 SQ. YD.)

434 TONS LEVELING BINDER  
(MACHINE METHOD), SUPERPAVE N50

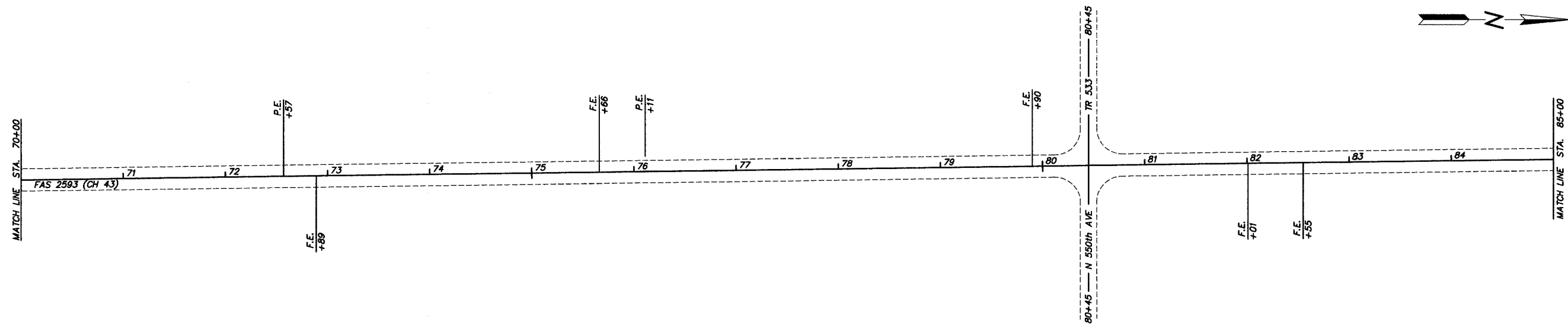
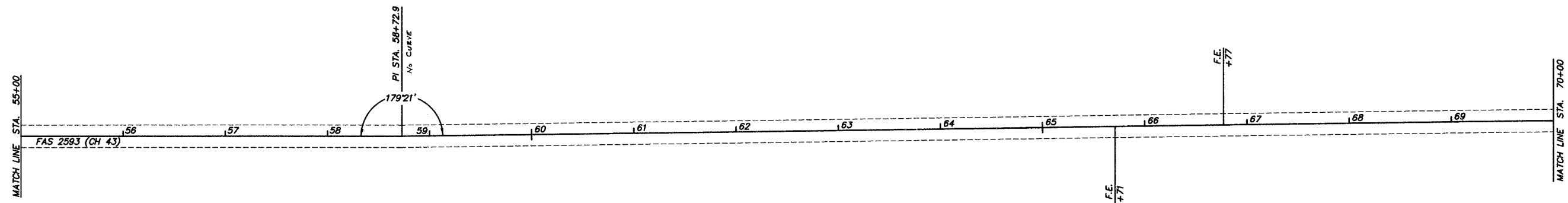
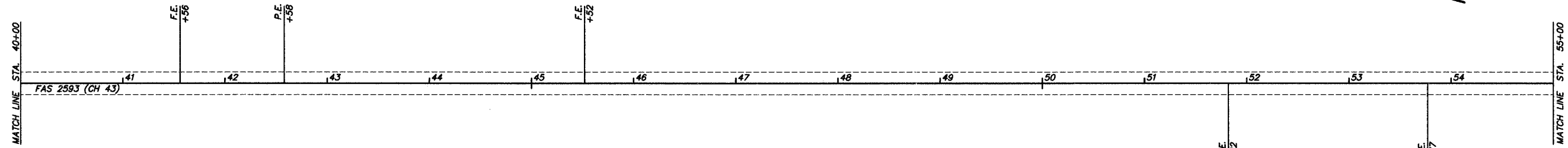
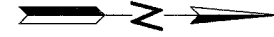
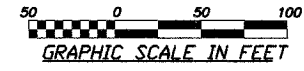
+00 LEVELING BINDER ENDS

POT STA. 33+81.15

POT STA. 22+00

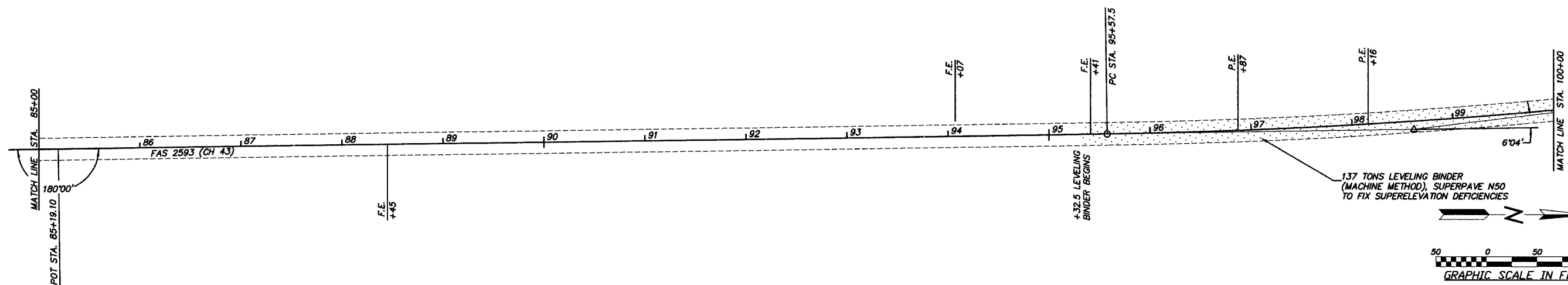
COUNTY	ROUTE	SECTION	TOTAL SHEETS	SHEET NO.
ADAMS	FAS 2593	05-00193-00-RS	12	5

STATION 40+00 TO STATION 85+00



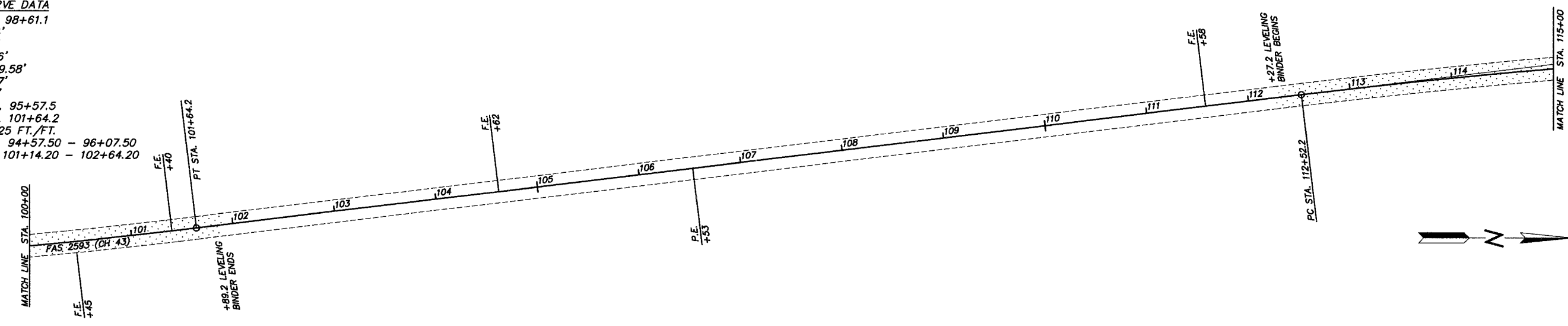
COUNTY	ROUTE	SECTION	TOTAL SHEETS	SHEET NO.
ADAMS	FAS 2593	05-00193-00-RS	12	6

STATION 85+00 TO STATION 130+00



**CURVE DATA**

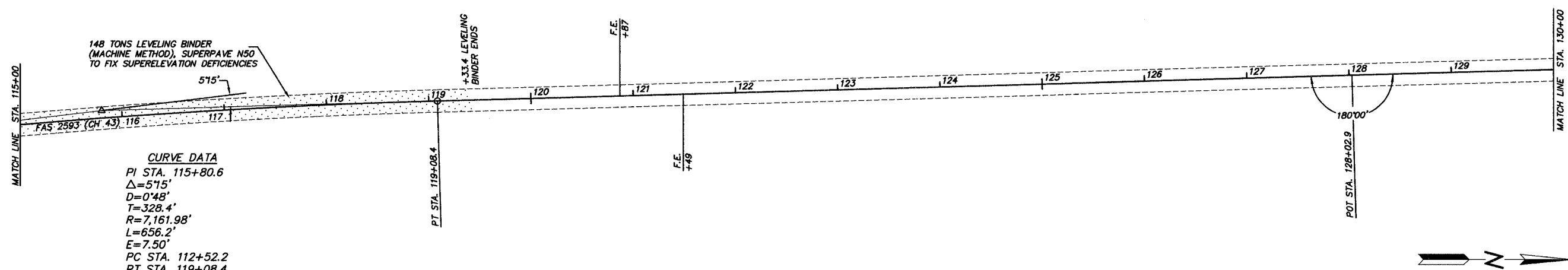
PI STA. 98+61.1  
 $\Delta=6'04''$   
 $D=1'00''$   
 $T=303.6'$   
 $R=5,729.58'$   
 $L=606.7'$   
 $E=8.04'$   
 PC STA. 95+57.5  
 PT STA. 101+64.2  
 $SE=0.025 \text{ FT./FT.}$   
 $SE \text{ ATT. } 94+57.50 - 96+07.50$   
 $101+14.20 - 102+64.20$



148 TONS LEVELING BINDER  
 (MACHINE METHOD), SUPERPAVE N50  
 TO FIX SUPERELEVATION DEFICIENCIES

**CURVE DATA**

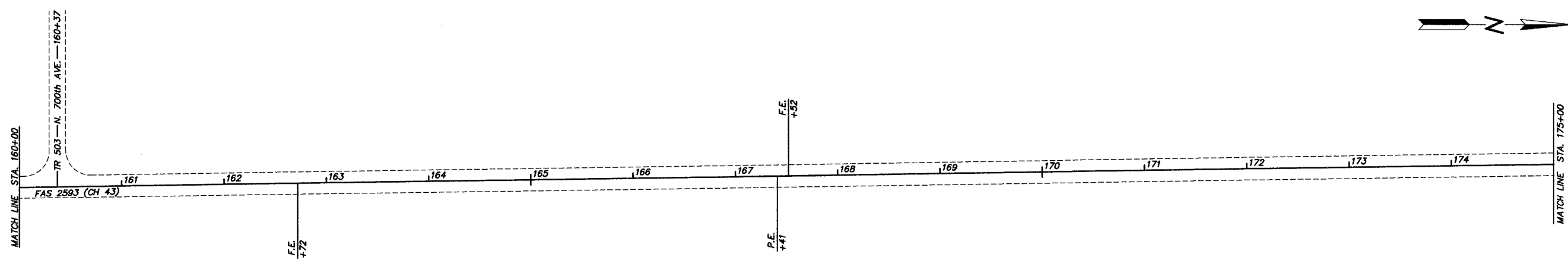
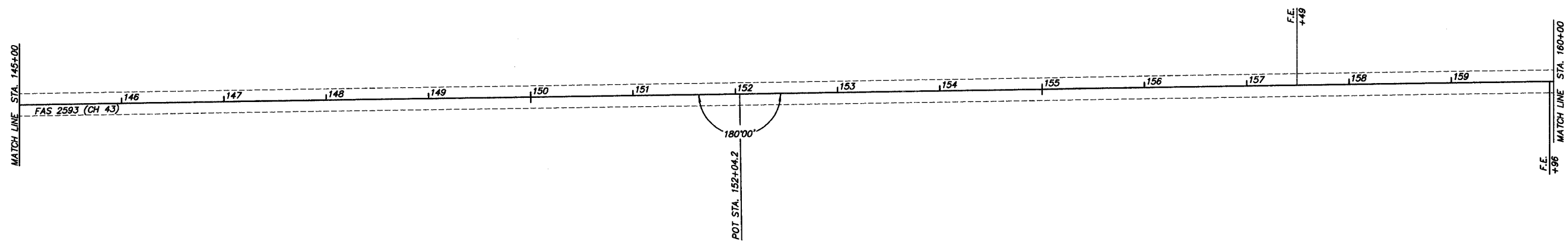
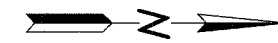
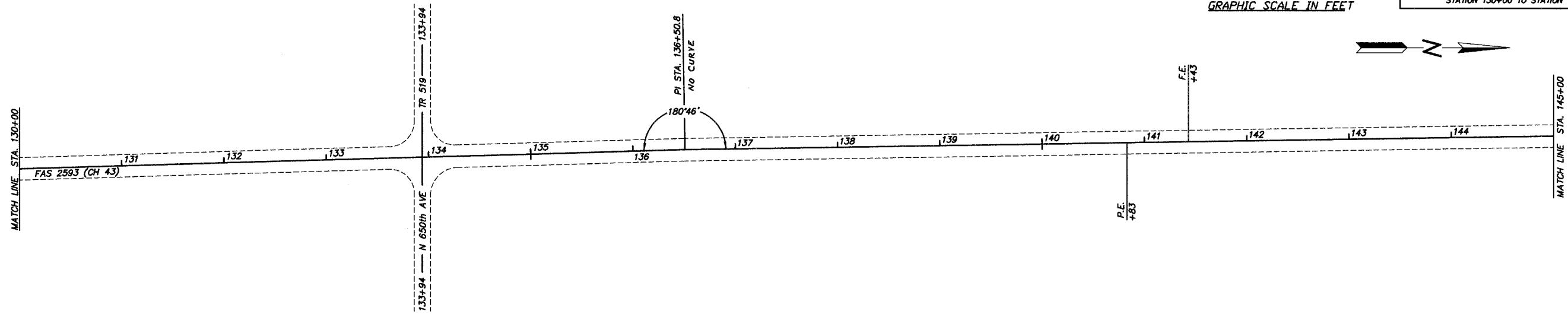
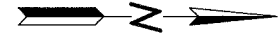
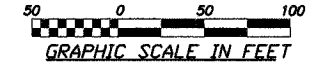
PI STA. 115+80.6  
 $\Delta=5'15''$   
 $D=0'48''$   
 $T=328.4'$   
 $R=7,161.98'$   
 $L=656.2'$   
 $E=7.50'$   
 PC STA. 112+52.2  
 PT STA. 119+08.4  
 $SE=0.025 \text{ FT./FT.}$   
 $SE \text{ ATT. } 111+52.2 - 113+02.2$   
 $118+58.4 - 120+08.4$



93396

COUNTY	ROUTE	SECTION	TOTAL SHEETS	SHEET NO.
ADAMS	FAS 2593	05-00193-00-RS	12	7

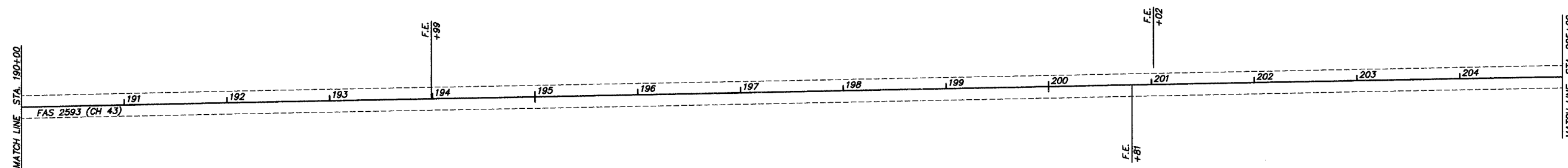
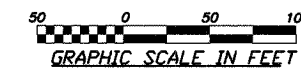
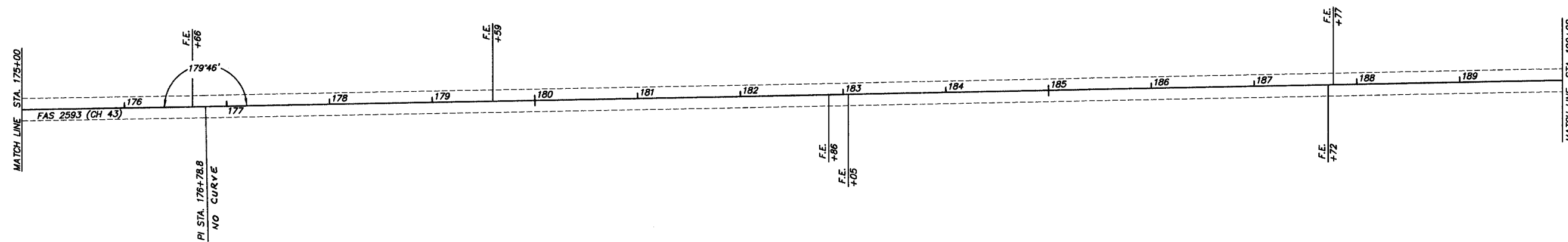
STATION 130+00 TO STATION 175+00



93396

COUNTY	ROUTE	SECTION	TOTAL SHEETS	SHEET NO.
ADAMS	FAS 2593	05-00193-00-RS	12	8

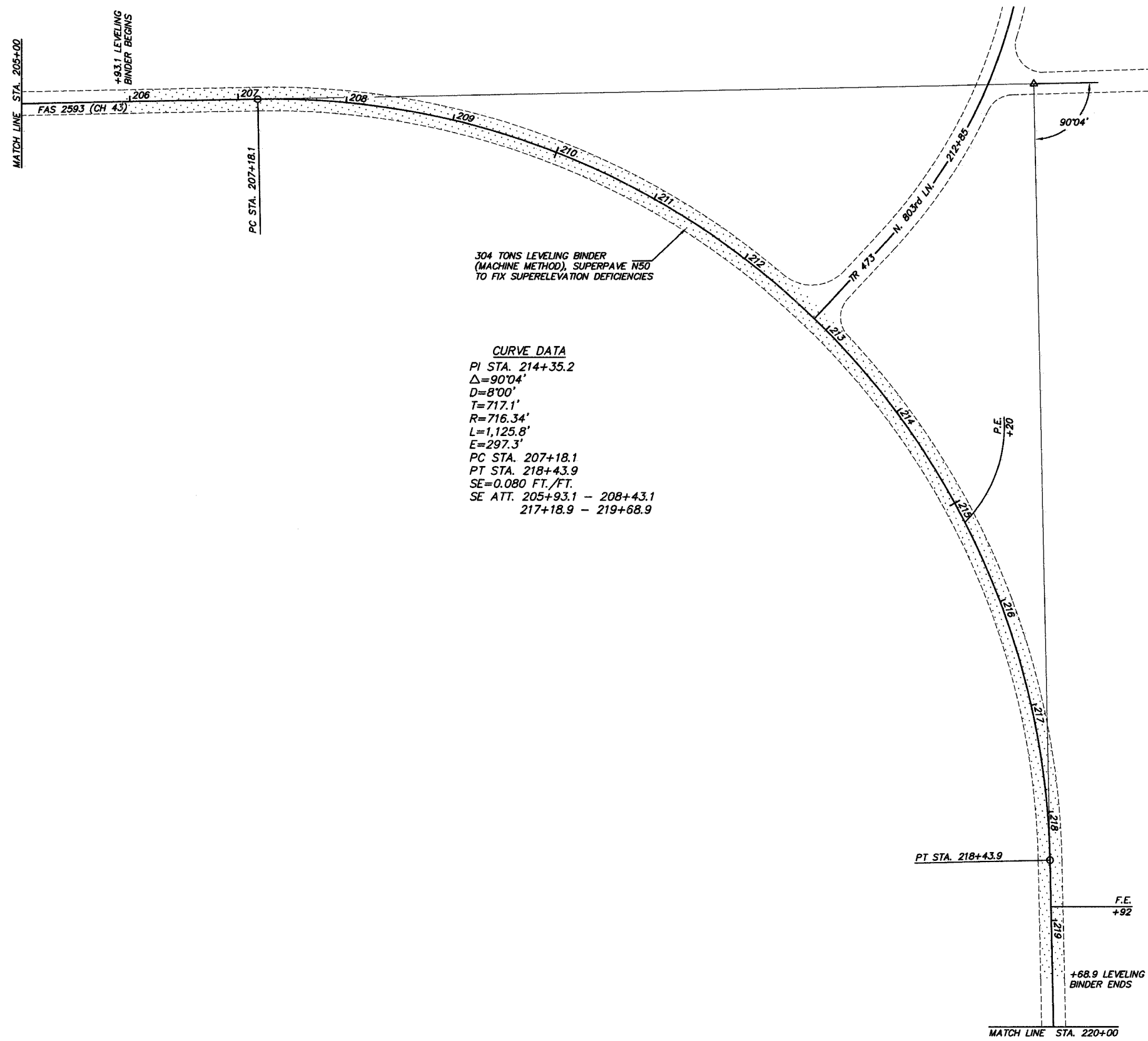
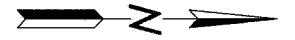
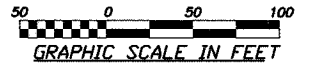
STATION 175+00 TO STATION 205+00





93396

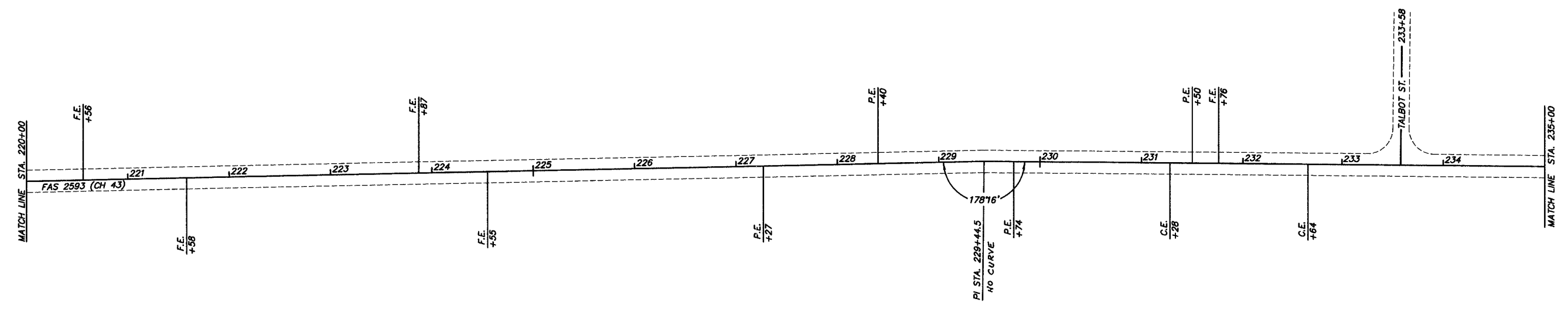
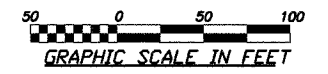
COUNTY	ROUTE	SECTION	TOTAL SHEETS	SHEET NO.
ADAMS	FAS 2593	05-00193-00-RS	12	9
STATION 205+00 TO STATION 220+00				



93396

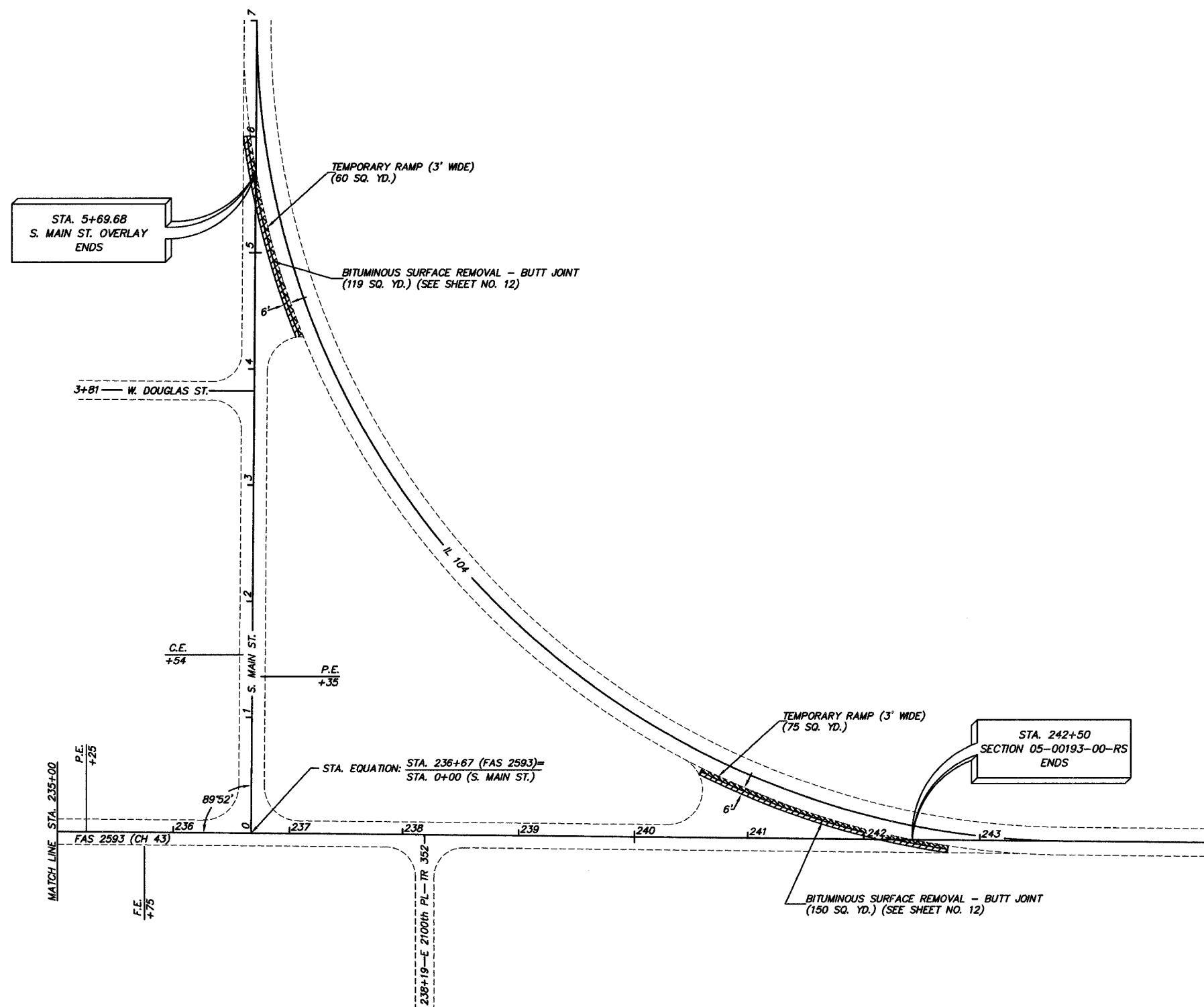
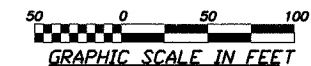
COUNTY	ROUTE	SECTION	TOTAL SHEETS	SHEET NO.
ADAMS	FAS 2593	05-00193-00-RS	12	10

STATION 220+00 TO STATION 235+00



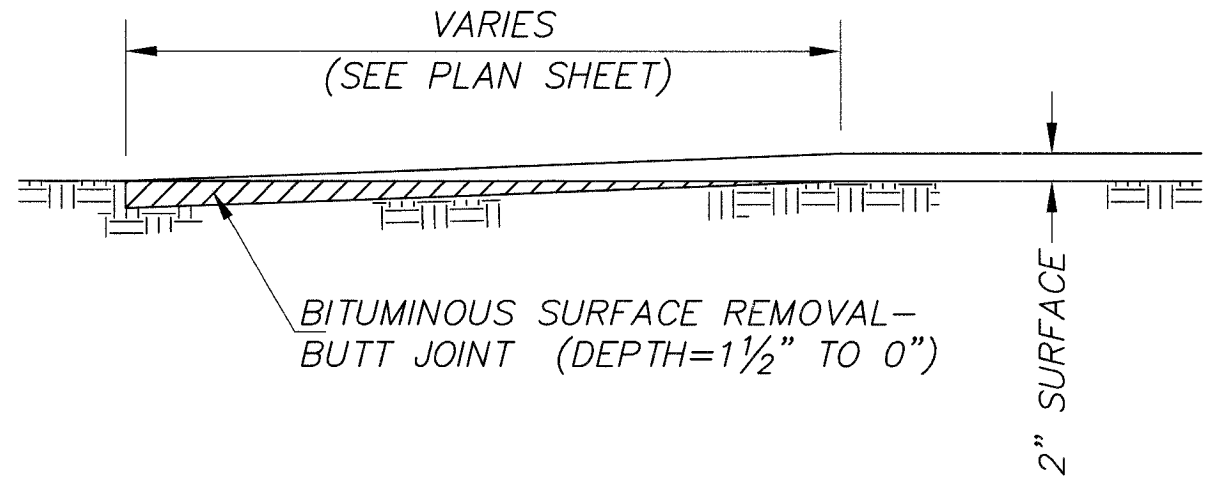
93396

COUNTY	ROUTE	SECTION	TOTAL SHEETS	SHEET NO.
ADAMS	FAS 2593	05-00193-00-RS	12	11
STATION 220+00 TO STATION 243+50				



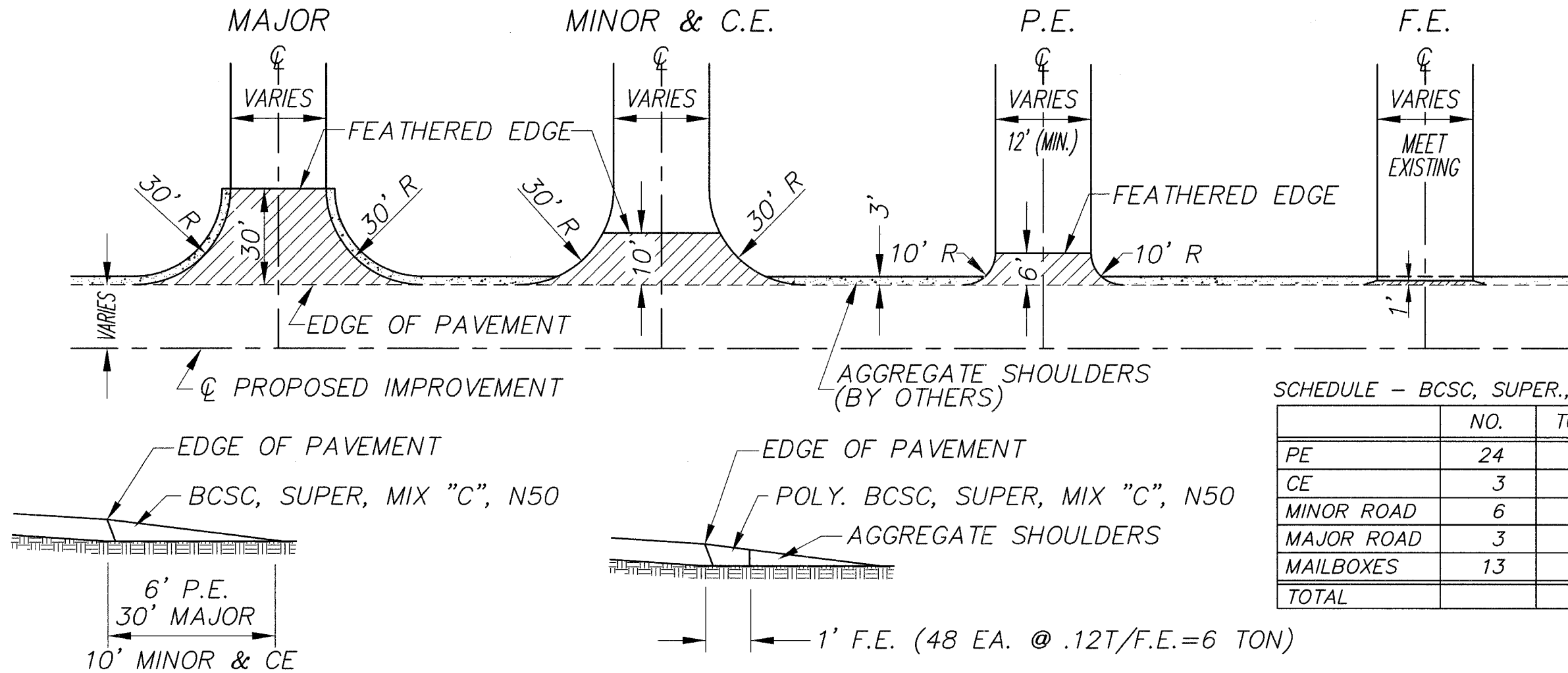
COUNTY	ROUTE	SECTION	TOTAL SHEETS	SHEET NO.
ADAMS	FAS 2593	05-00193-00-RS	12	12
BUTT JOINT DETAIL				
SIDE ROAD & ENTRANCE DETAILS				

### BUTT JOINT DETAIL



### INTERSECTION DETAILS

### ENTRANCE DETAILS



SCHEDULE - BCSC, SUPER., MIX "C" N50

	NO.	TONS/	TONS
PE	24	1.5	36
CE	3	6	18
MINOR ROAD	6	6	36
MAJOR ROAD	3	12	36
MAILBOXES	13	2.4	32
TOTAL			158