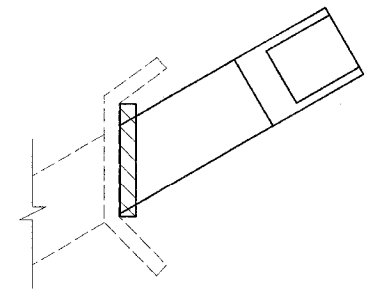


c:\projects\94652\94652.dwg 1/31/2005
 1 2 3 4 5 6 7 8 9 10 11 12 13 14 15 16 17 18 19 20 21 22 23 24 25 26 27 28 29 30 31 32 33 34 35 36 37 38 39 40 41 42 43 44 45 46 47 48 49 50 51 52 53 54 55 56 57 58 59 60 61 62 63

c:\projects\94652\94652.dwg 1/31/2005
 steffenk\ DATE

FAP NO.	SECTION	COUNTY	TOTAL SHEETS	SHEET NO.
332	1012JW,RS	WHITE/EDWARDS	198	61
FED. ROAD DIST. NO. 1		ILLINOIS	FED. AID PROJECT NO.	
CONTRACT NO. 94652				

STA 11+22
 EXISTING 3' X 3' RC BOX CULVERT - CULVERT NO. 1
 23° 30' SKEW

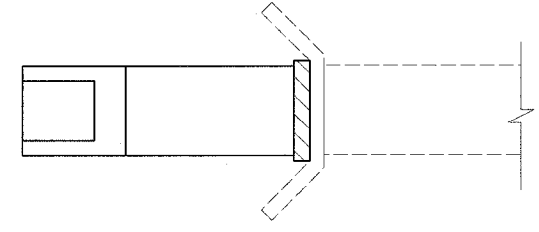


- RT
- PRECAST BOX CULVERT 3' X 3' - 58.5FT
 - BOX CULVERT END SECTION - CULVERT NO. 1 - 1.0 EA
 - CONCRETE HEADWALL REMOVAL - 0.30CU YD
 - EXPANSION BOLTS - 3/4" X 15" - 8.0 EA
 - REINFORCEMENT BARS - 44.1 LB
 - CLASS SI CONCRETE COLLAR - 0.80CU YD
 - POROUS GRANULAR BACKFILL - 8.6 CU YD
 - CHANNEL EXCAVATION - 75.0 CU YD

BOX CULVERT DESIGN CRITERIA			
CULVERT NUMBER	Fmin/Fmax (feet)	DESIGN FILL HEIGHT (feet)	AASHTO DESIGNATION
1	12.8' >= 4'	12.8'	M 259
2	12.4' >= 4'	14.9'	M 259
3	7.4' >= 4'	7.4'	M 259
4	3' <= 3.6' < 4'	3'	M 259

END SECTION SCHEDULE				
CULVERT NUMBER	SIDE	STATION	OFFSET	SIZE
1	RT	11+69.8	94.0'	3' X 3'
2	RT	16+88	91.0'	5' X 4'
2	LT	16+92	81.5'	4' X 4'
3	LT	23+92	46.0'	3' X 3'
4	RT	27+89.5	38.5'	4' X 4'
4	LT	28+08	53.5'	4' X 4'

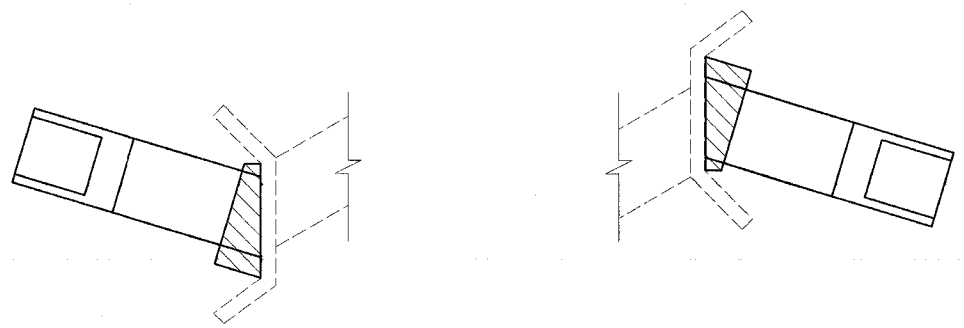
STA 23+92
 EXISTING 3' X 3' RC BOX CULVERT - CULVERT NO. 3
 0° SKEW



- LT
- PRECAST BOX CULVERT 4' X 4' - 14.0FT
 - BOX CULVERT END SECTION - CULVERT NO. 3 - 1.0 EA
 - CONCRETE HEADWALL REMOVAL - 0.30CU YD
 - EXPANSION BOLTS - 3/4 " X 15" - 8.0 EA
 - REINFORCEMENT BARS - 29.4 LB
 - CLASS SI CONCRETE COLLAR - 0.40CU YD
 - POROUS GRANULAR BACKFILL - 2.8 CU YD

DIMENSIONS SHOWN ON UTILITIES ARE
 DISTANCE FROM CENTERLINE OF
 US ROUTE 51 TO UTILITIES

STA 16+90
 EXISTING 4' X 4' RC BOX CULVERT - CULVERT NO. 2
 20° SKEW



- LT
- PRECAST BOX CULVERT 4' X 4' - 42.0FT
 - BOX CULVERT END SECTION - CULVERT NO. 2 - 1.0 EA
 - CONCRETE HEADWALL REMOVAL - 0.40CU YD
 - EXPANSION BOLTS - 3/4 " X 15" - 8.0 EA
 - REINFORCEMENT BARS - 53.4 LB
 - CLASS SI CONCRETE COLLAR - 1.90CU YD
 - POROUS GRANULAR BACKFILL - 6.5 CU YD
- RT
- PRECAST BOX CULVERT 5' X 4' - 42.0FT
 - BOX CULVERT END SECTION - CULVERT NO. 2 - 1.0 EA
 - CONCRETE HEADWALL REMOVAL - 0.40CU YD
 - EXPANSION BOLTS - 3/4 " X 15" - 8.0 EA
 - REINFORCEMENT BARS - 58.8 LB
 - CLASS SI CONCRETE COLLAR - 1.80CU YD
 - POROUS GRANULAR BACKFILL - 8.9 CU YD

STA 28+00
 EXISTING 4' X 4' RC BOX CULVERT - CULVERT NO. 4
 15° SKEW



- LT
- PRECAST BOX CULVERT 4' X 4' - 13.0FT
 - BOX CULVERT END SECTION - CULVERT NO. 4 - 1.0 EA
 - CONCRETE HEADWALL REMOVAL - 0.60CU YD
 - EXPANSION BOLTS - 3/4 " X 15" - 8.0 EA
 - REINFORCEMENT BARS - 53.4 LB
 - CLASS SI CONCRETE COLLAR - 0.80CU YD
 - POROUS GRANULAR BACKFILL - 2.4 CU YD
- RT
- PRECAST BOX CULVERT 4' X 4' - 8.5 FT
 - BOX CULVERT END SECTION - CULVERT NO. 4 - 1.0 EA
 - CONCRETE HEADWALL REMOVAL - 0.50CU YD
 - EXPANSION BOLTS - 3/4 " X 15" - 8.0 EA
 - REINFORCEMENT BARS - 53.4 LB
 - CLASS SI CONCRETE COLLAR - 1.10CU YD
 - POROUS GRANULAR BACKFILL - 4.7 CU YD
 - REMOVE EXISTING FLARED END SECTION - 1.0 EA
 - METAL END SECTION 48" - 1.0 EA

REVISIONS	
NAME	DATE

ILLINOIS DEPARTMENT OF TRANSPORTATION
**CULVERT EXTENSION
 DETAILS**
 SCALE: VERT. DATE
 HORIZ. DATE
 DRAWN BY
 CHECKED BY