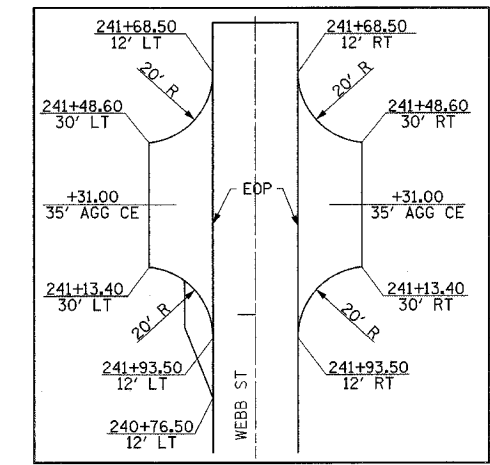
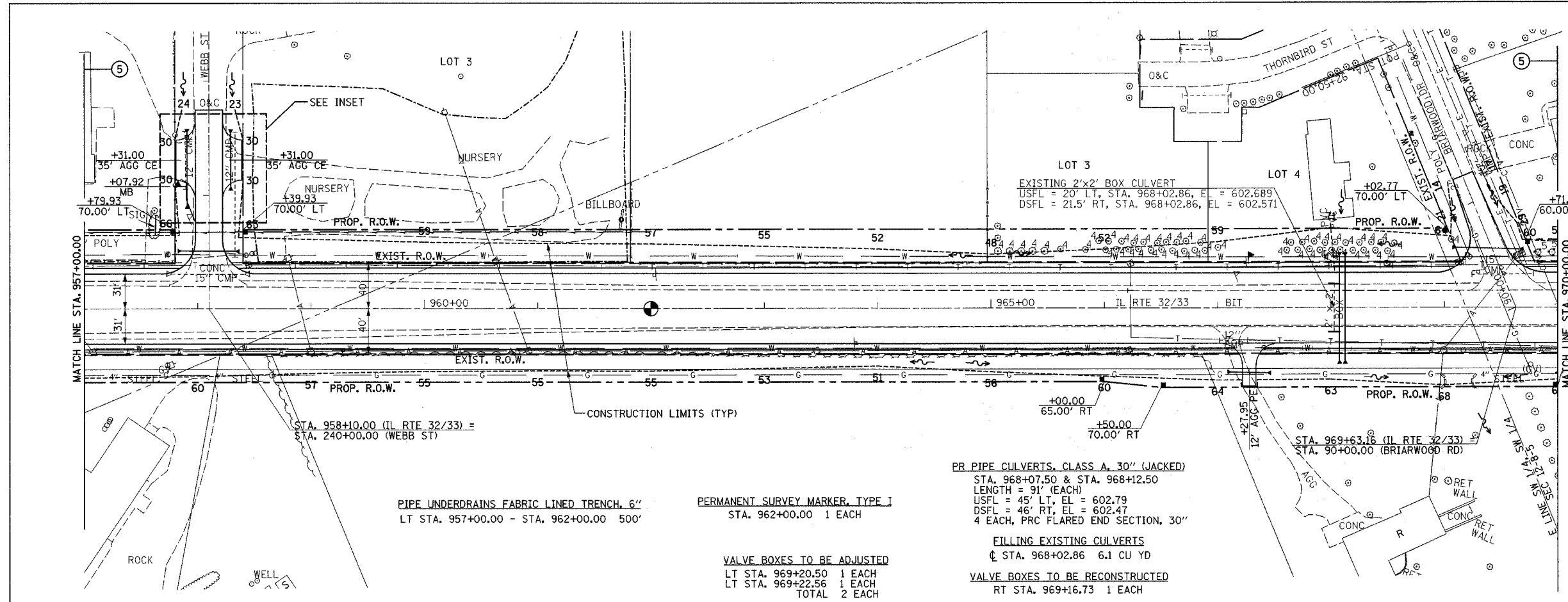


DATE: \_\_\_\_\_ BY: \_\_\_\_\_  
 DRAWN: \_\_\_\_\_ CHECKED: \_\_\_\_\_  
 NOTE BOOK NO.: \_\_\_\_\_  
 DATE: \_\_\_\_\_ BY: \_\_\_\_\_  
 DRAWN: \_\_\_\_\_ CHECKED: \_\_\_\_\_  
 NOTE BOOK NO.: \_\_\_\_\_



PIPE UNDERDRAINS FABRIC LINED TRENCH, 6"  
 LT STA. 957+00.00 - STA. 962+00.00 500'

PERMANENT SURVEY MARKER, TYPE I  
 STA. 962+00.00 1 EACH

VALVE BOXES TO BE ADJUSTED  
 LT STA. 969+20.50 1 EACH  
 LT STA. 969+22.56 1 EACH  
 TOTAL 2 EACH

PR PIPE CULVERTS, CLASS A, 30" (JACKED)  
 STA. 968+07.50 & STA. 968+12.50  
 LENGTH = 91' (EACH)  
 USFL = 45' LT, EL = 602.79  
 DSFL = 46' RT, EL = 602.47  
 4 EACH, PRC FLARED END SECTION, 30"

FILLING EXISTING CULVERTS  
 STA. 968+02.86 6.1 CU YD

VALVE BOXES TO BE RECONSTRUCTED  
 RT STA. 969+16.73 1 EACH

DATE: \_\_\_\_\_ BY: \_\_\_\_\_  
 DRAWN: \_\_\_\_\_ CHECKED: \_\_\_\_\_  
 NOTE BOOK NO.: \_\_\_\_\_  
 DATE: \_\_\_\_\_ BY: \_\_\_\_\_  
 DRAWN: \_\_\_\_\_ CHECKED: \_\_\_\_\_  
 NOTE BOOK NO.: \_\_\_\_\_

