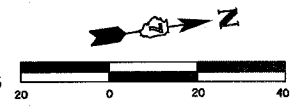
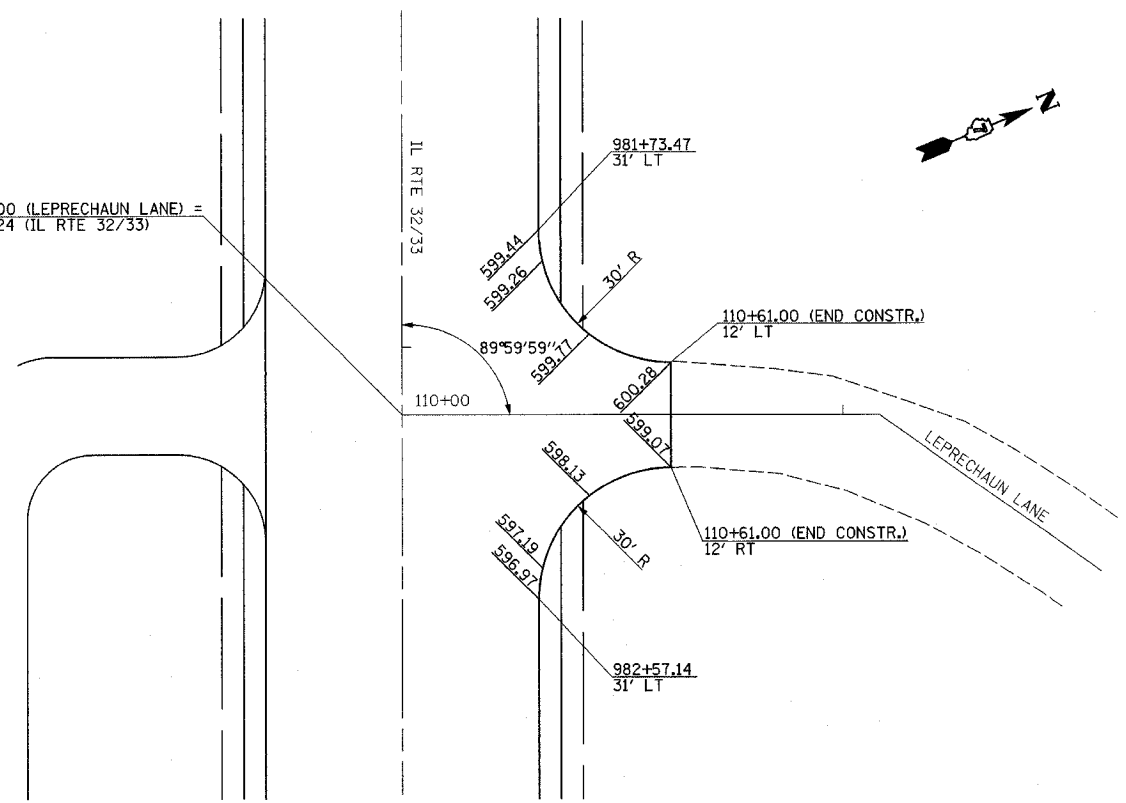


F.A.P. RTE.	SECTION	COUNTY	TOTAL SHEETS	SHEET NO.
774	.	EFFINGHAM	273	77
FED. ROAD DIST. NO. 7 ILLINOIS FED. AID PROJECT				
*107WRS-1, 107BY, 107BY-1 & 107B-2				
CONTRACT NO. 94827				

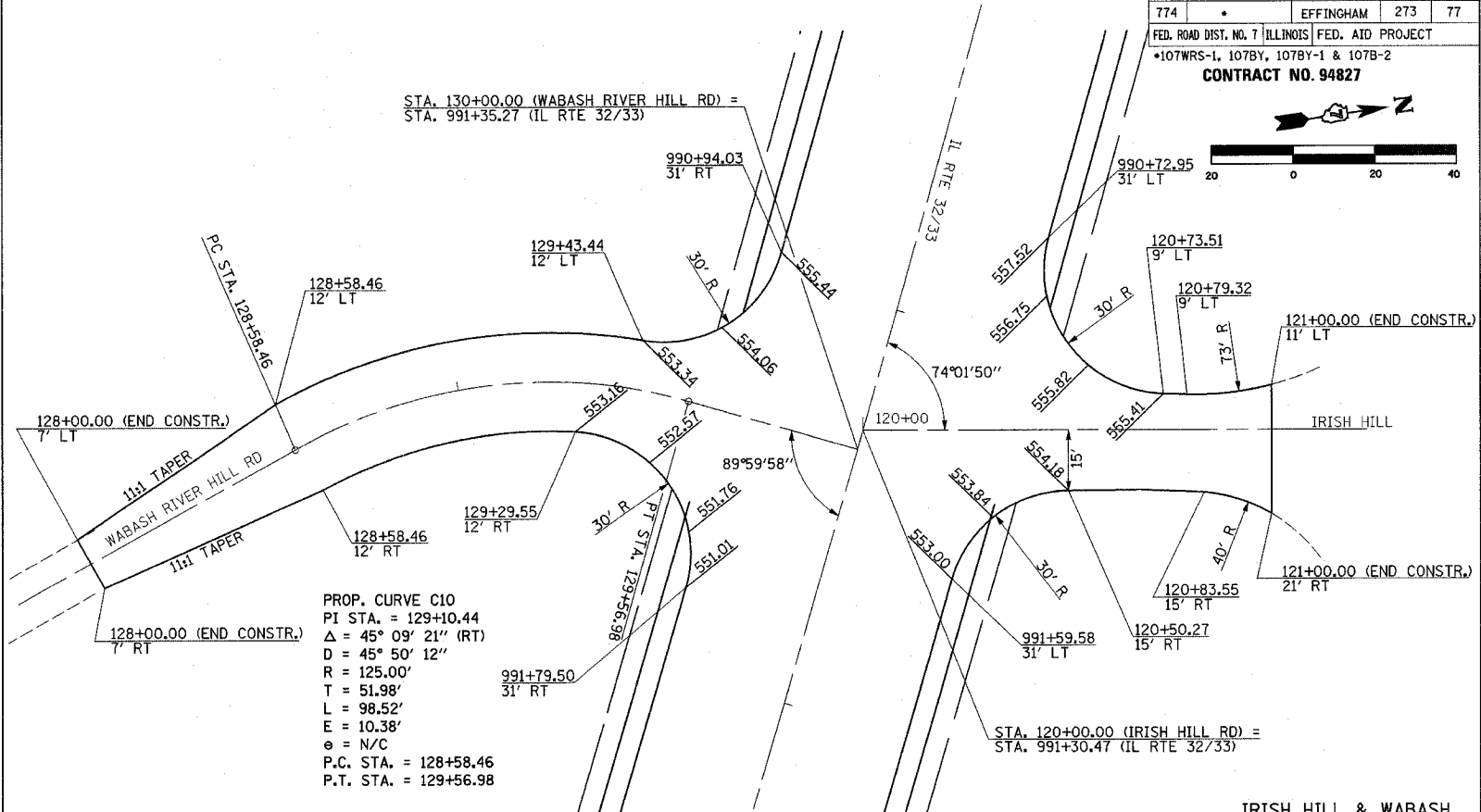


STA. 110+00.00 (LEPRECHAUN LANE) =  
STA. 982+15.24 (IL RTE 32/33)



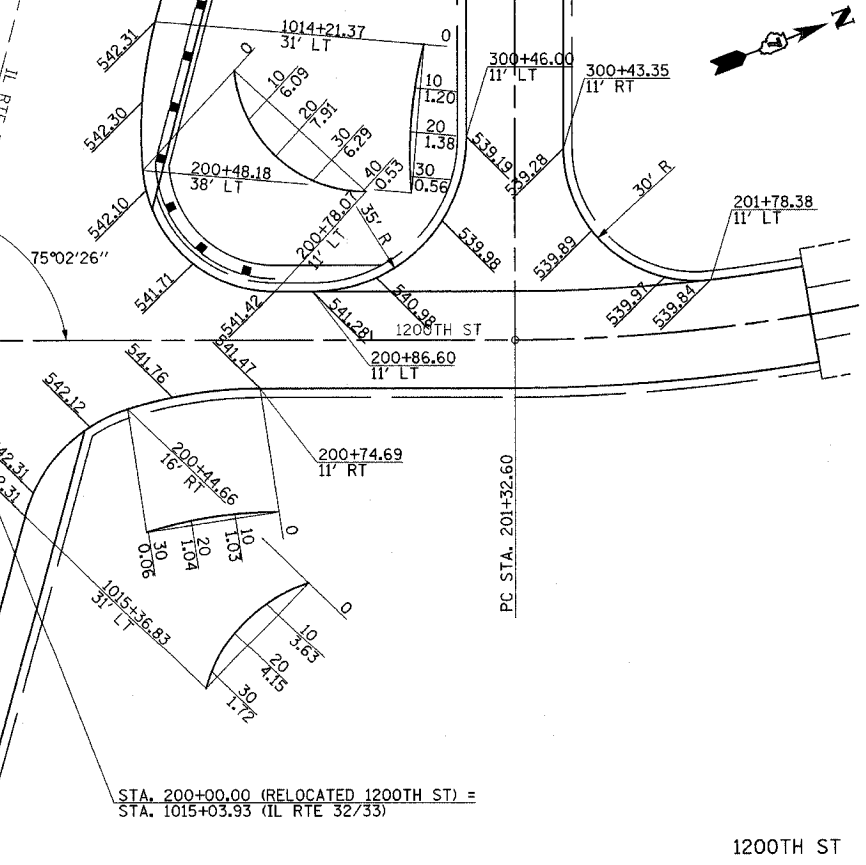
LEPRECHAUN LANE

STA. 130+00.00 (WABASH RIVER HILL RD) =  
STA. 991+35.27 (IL RTE 32/33)



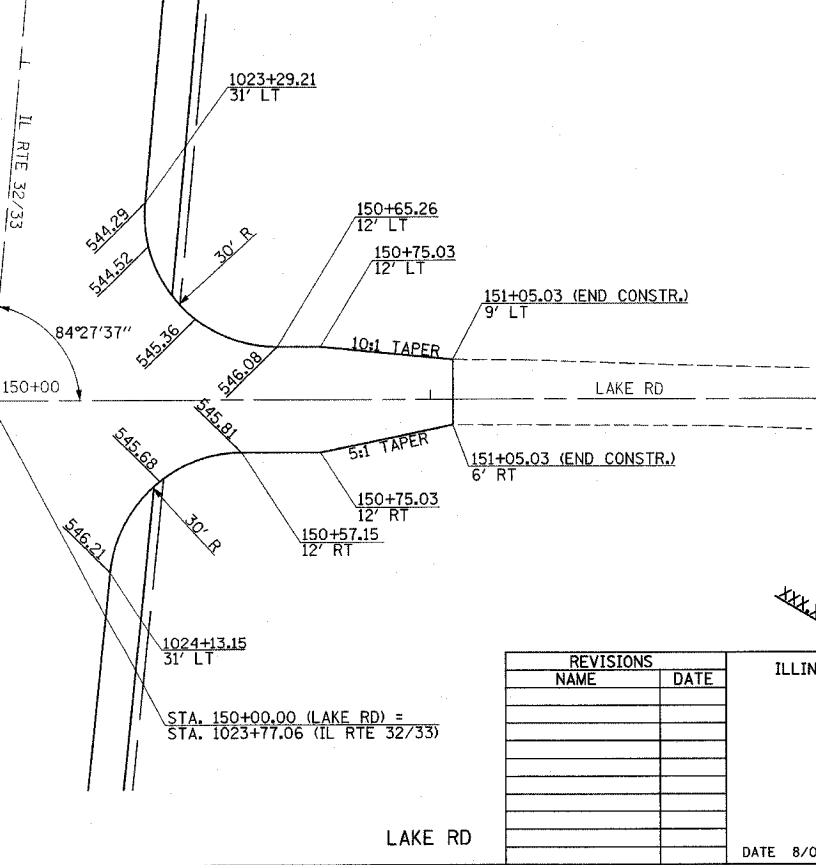
IRISH HILL & WABASH

PROP. CURVE C10  
PI STA. = 129+10.44  
Δ = 45° 09' 21" (RT)  
D = 45° 50' 12"  
R = 125.00'  
T = 51.98'  
L = 98.52'  
E = 10.38'  
e = N/C  
P.C. STA. = 128+58.46  
P.T. STA. = 129+56.98



1200TH ST

STA. 200+00.00 (RELOCATED 1200TH ST) =  
STA. 1015+03.93 (IL RTE 32/33)



LAKE RD

STA. 150+00.00 (LAKE RD) =  
STA. 1023+77.06 (IL RTE 32/33)

**LEGEND**  
XXX.XX INDICATES PROPOSED GRADE ELEVATION INTERVAL AROUND CURVES IS 20' UNLESS NOTED

REVISIONS	
NAME	DATE

ILLINOIS DEPARTMENT OF TRANSPORTATION  
**INTERSECTION GEOMETRICS**  
SHEET 3 OF 5  
DATE 8/02  
DRAWN BY MLO  
CHECKED BY SJK