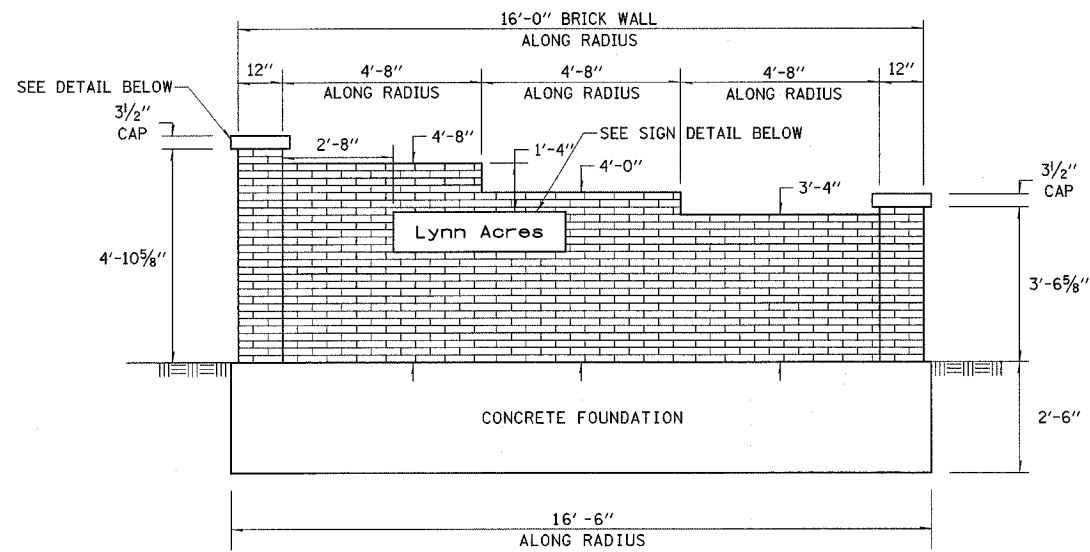
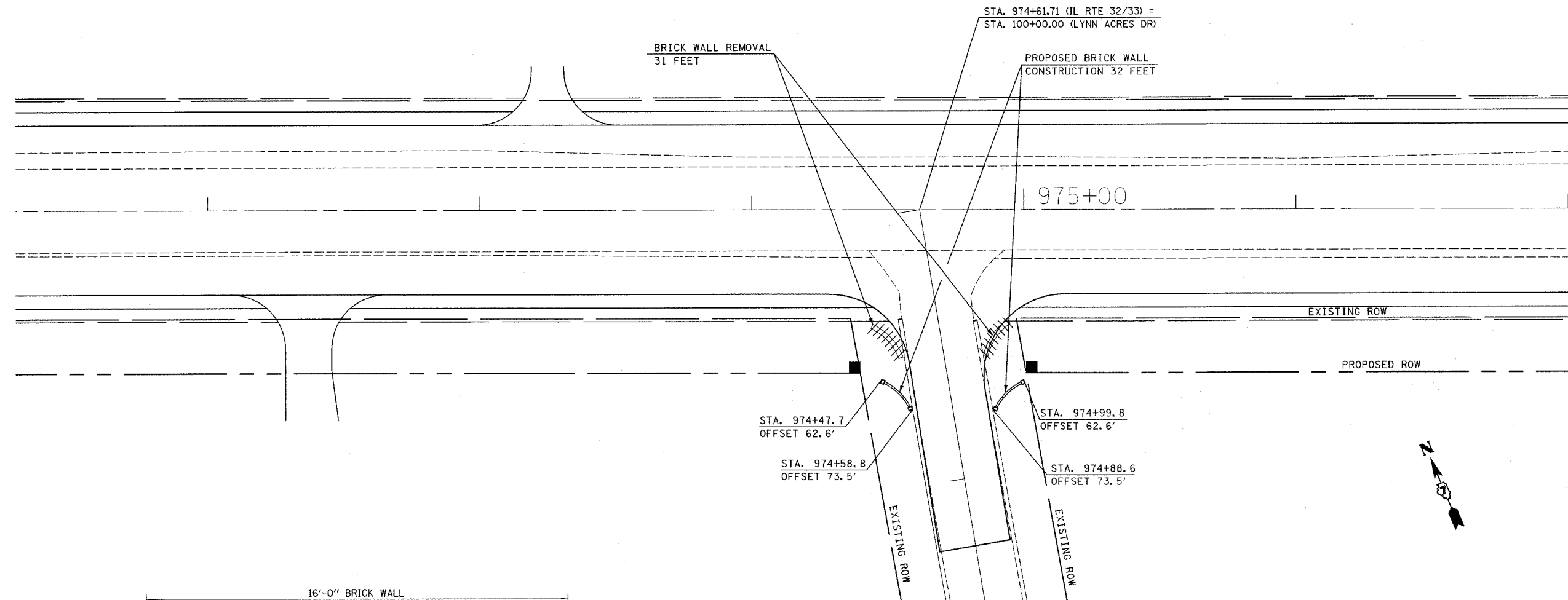
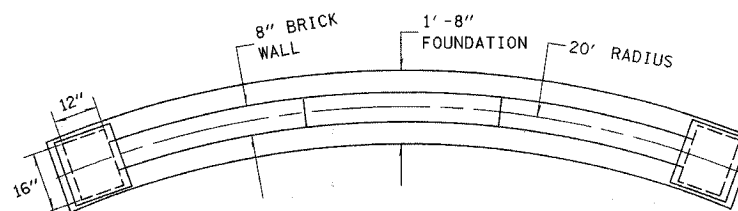


F.A.P. RTE.	SECTION	COUNTY	TOTAL SHEETS	SHEET NO.
774	*	EFFINGHAM	273	113
FED. ROAD DIST. NO.	ILLINOIS	FED. AID PROJECT		
			* 107WRS-1, 107BY, 107BY-1 & 107B-2	
CONTRACT NO. 94827				



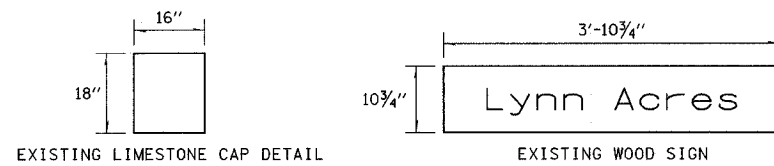
WALL ELEVATION



WALL PLAN

NOTES:

1. PRIOR TO REMOVAL OF EXISTING BRICK WALLS, REMOVE "LYNN ACRES" SIGN AND LIMESTONE COLUMN CAPS AS SHOWN ON THE PLANS AND SAVE FOR REUSE.
2. REMOVE EXISTING BRICK WALLS AND CONCRETE FOUNDATION.
3. CONSTRUCT THE PROPOSED UNREINFORCED CONCRETE FOUNDATIONS FLUSH WITH THE GROUND AT PROPOSED LOCATIONS AS SHOWN ON THE PLANS.
4. CONSTRUCT THE BRICK WALLS AS DETAILED IN THE PLANS. MATCH THE EXISTING BRICK COLOR.
5. ATTACH "LYNN ACRES" SIGN AND REPLACE THE LIMESTONE COLUMN CAPS.
6. SEE SPECIAL PROVISIONS FOR ADDITIONAL INFORMATION.



REVISIONS		ILLINOIS DEPARTMENT OF TRANSPORTATION
NAME	DATE	
		BRICK WALL DETAIL
DATE		DRAWN BY DIST. 7 CHECKED BY DIST. 7

DATE: 11/11/2008 10:54:17 AM