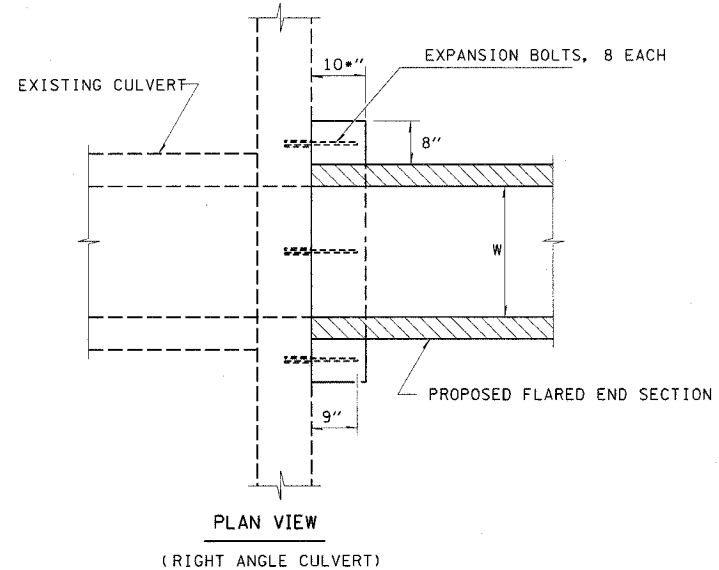


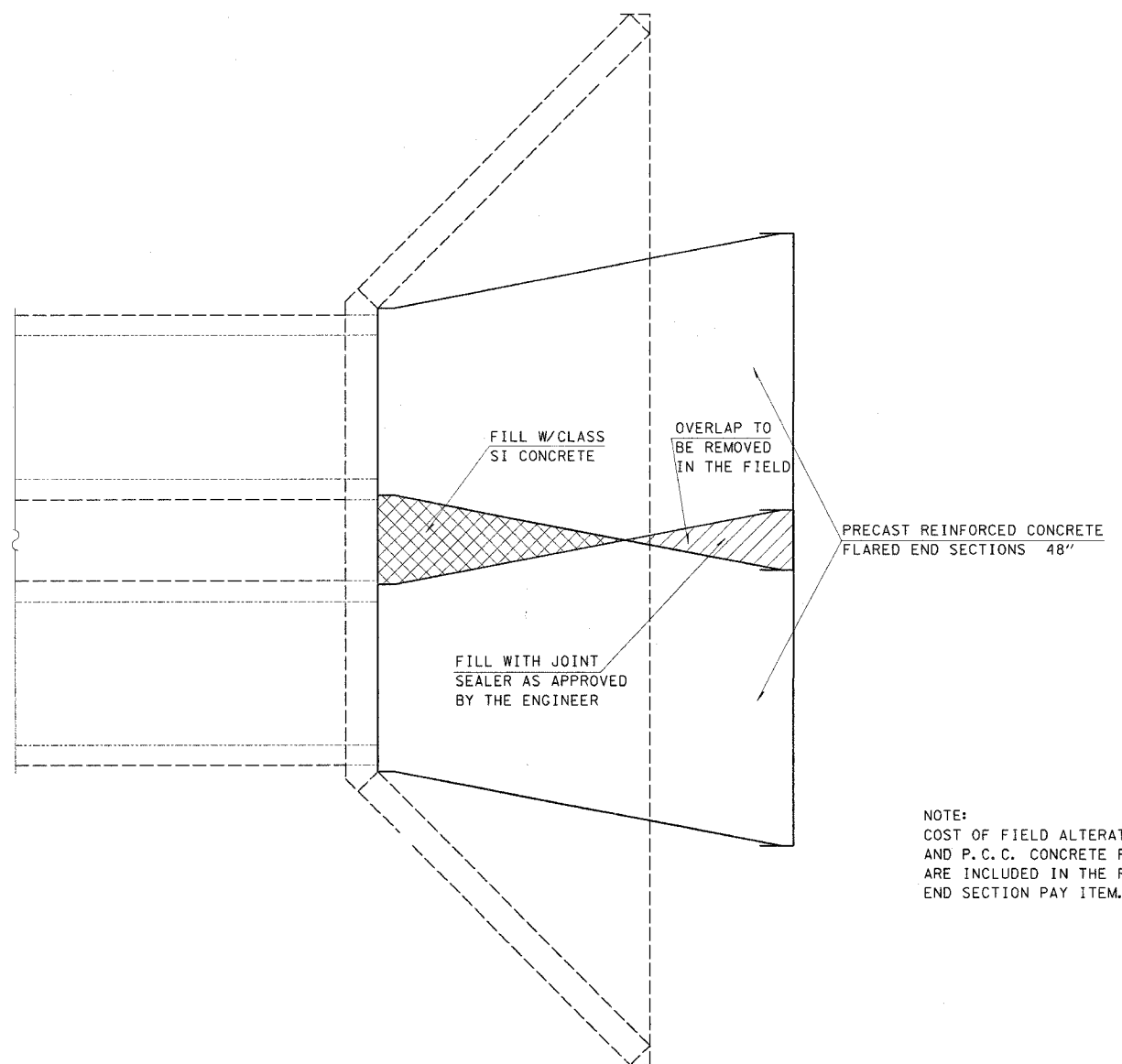
tees\eyck
4/4/2005
c:\projects\94866\d02204pa.dgn
TYP 2

FAP #/E.	SECTION	COUNTY	TOTAL SHEETS	SHEET NO.
322	26RS-2	MARION	18	5
FED. ROAD DIST. NO. 7		ILLINOIS	FED. AID PROJECT NO.	

CONTRACT NO. 94866



CONCRETE COLLAR
STA. 718+79 LT
STA. 746+94 LT
STA. 746+94 RT
STA. 784+20 LT
STA. 784+20 RT



NOTE:
COST OF FIELD ALTERATIONS AND P.C.C. CONCRETE FILLER ARE INCLUDED IN THE FLARED END SECTION PAY ITEM.

F.E.S. DETAIL
STA. 784+20 LT
STA. 784+20 RT

REVISIONS	
NAME	DATE

ILLINOIS DEPARTMENT OF TRANSPORTATION

DETAILS

SCALE: VERT.
HORIZ.
DATE

DRAWN BY
CHECKED BY