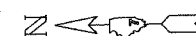


teos\ejck
 4/4/2005
 c:\projects\94866d\02204pa.dgn
 PS 2

FAP R/L	SECTION	COUNTY	TOTAL SHEETS	SHEET NO.
322	26RS-2	MARION	18	9

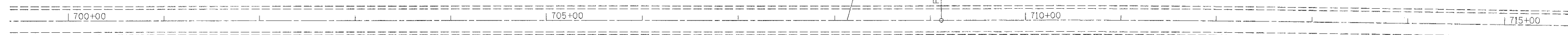
FED. ROAD DIST. NO. 1 ILLINOIS FED. AID PROJECT NO.
 CONTRACT NO. 94866



PROJECT BEGINS
 STA. 708+13.00

EXIST. CURVE C1
 PI STA. = 713+22.83
 Δ = 1° 23' 17" (RT)
 D = 0° 10' 07"
 R = 33,959.31'
 T = 411.38'
 L = 822.72'
 E = 2.49'
 e = ----
 T.R. = ----
 S.E. RUN = ----
 P.C. STA. = 709+11.45
 P.T. STA. = 717+34.17

P.C. Sta 709+11.45



REVISIONS	
NAME	DATE

ILLINOIS DEPARTMENT OF TRANSPORTATION

**STA 700 + 00
 TO
 STA 715 + 00**

SCALE: VERT. DRAWN BY
 HORIZ. CHECKED BY
 DATE