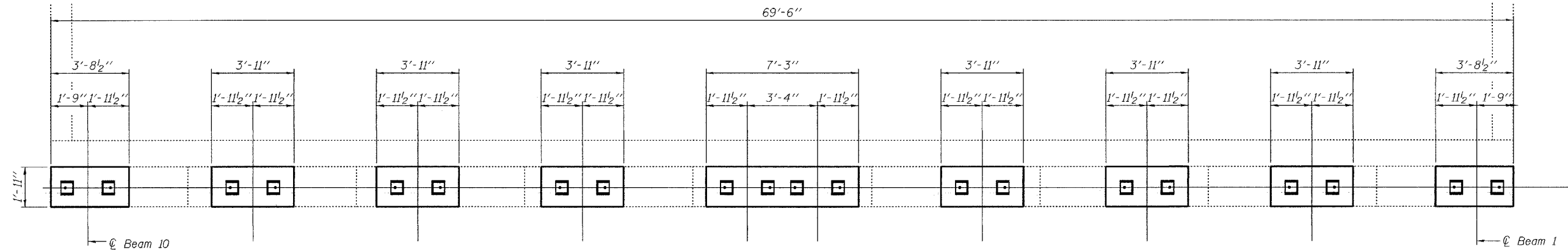


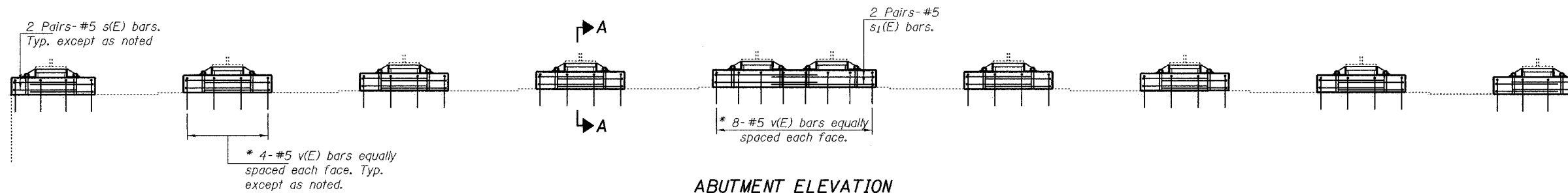
STATE OF ILLINOIS  
DEPARTMENT OF TRANSPORTATION

ROUTE NO.	SECTION	COUNTY	TOTAL SHEETS	SHEET NO.
		JEFFERSON	48	37
FED. ROAD DIST. NO. 7		ILLINOIS FED. AID PROJECT		

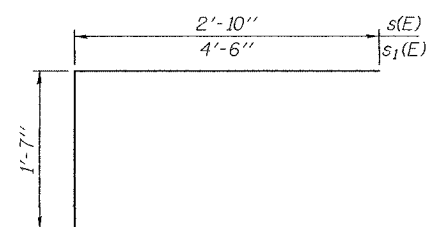
SHEET NO. 4  
5 SHEETS  
Contract No. 94905



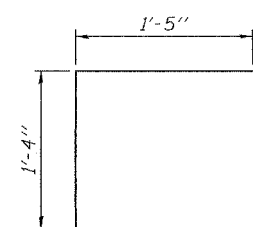
**ABUTMENT PLAN**  
South abutment, looking South  
North abutment similar by rotation.



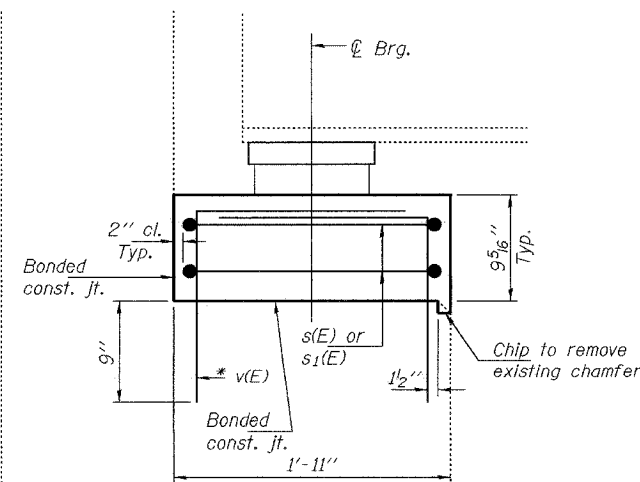
**ABUTMENT ELEVATION**



**BARS s(E) & s1(E)**



**BAR v(E)**



**SECTION A-A**

\* Epoxy grout v(E) bars in 9" min. holes according to Article 584 of the Standard Specifications.

**TWO ABUTMENTS  
BILL OF MATERIAL**

Bar	No.	Size	Length	Shape
s(E)	64	#5	7'-3"	▬
s1(E)	8	#5	10'-7"	▬
v(E)	160	#5	2'-9"	└
Concrete Structures			Cu. Yd.	4.2
Reinforcement Bars, Epoxy Coated			Lbs.	1030

Reinforcement bars designated (E) shall be epoxy coated.

**REPAIR DETAILS  
CH 9 OVER FAI 64  
JEFFERSON COUNTY  
SN 041-0069**

DESIGNED	ATH
CHECKED	VHV
DRAWN	baliva
CHECKED	ATH VHV

APRIL 13, 2005  
EXAMINED *John A. Morris*  
ENGINEER OF STRUCTURAL SERVICES  
PASSED *Ralph E. Anderson*  
ENGINEER OF BRIDGES AND STRUCTURES