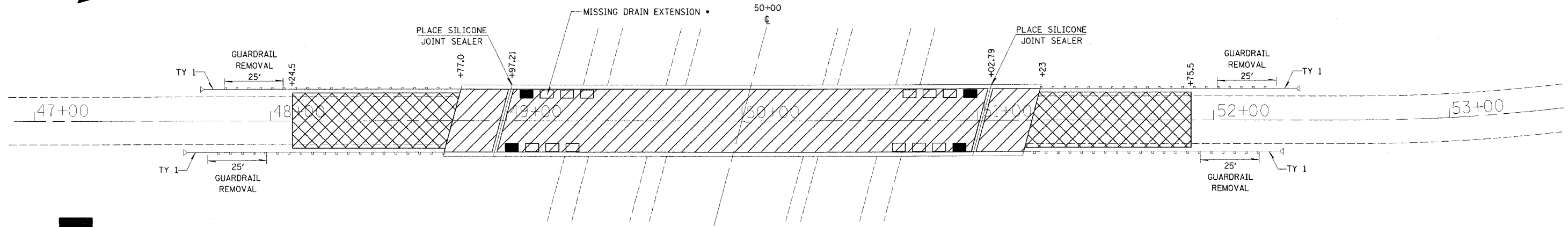


teasleyck
 teasleyck+_DATE_
 c:\projects\94905d\04201p.dgn
 BCD = 80

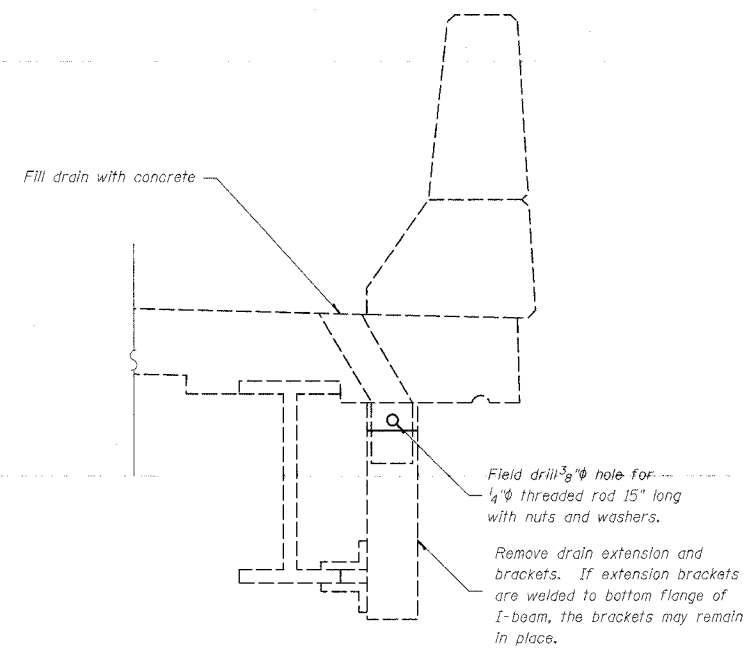
FAI R/L	SECTION	COUNTY	TOTAL SHEETS	SHEET NO.
64	(41-7)RS-1	JEFFERSON	40	42

FED. ROAD DIST. NO. 7 ILLINOIS FED. AID PROJECT NO.
 CONTRACT NO. 94941

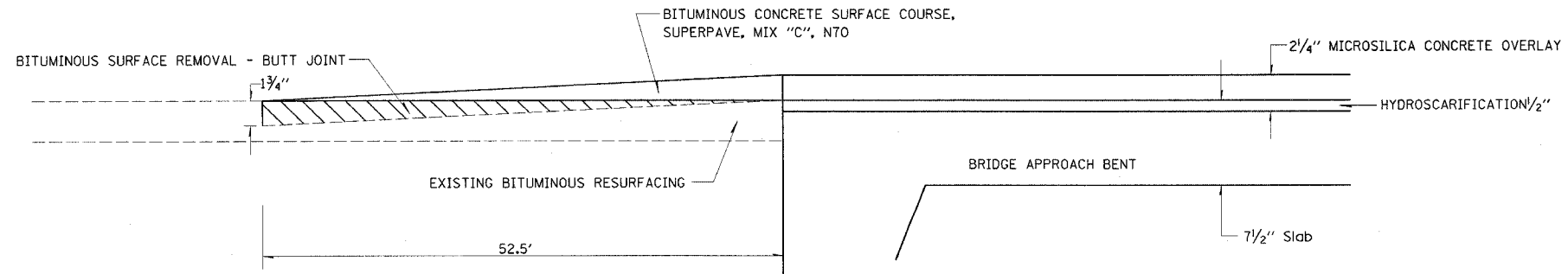


- PLUG EXISTING FLOOR DRAINS - 4 EACH
- BRIDGE DECK MICROSILICA CONCRETE OVERLAY 2 1/4" & BRIDGE DECK HYDRO-SCARIFICATION 1/2"
- BITUMINOUS RESURFACING

• NOTE: REPLACE DRAIN EXTENSION WITH EXTENSION FROM PLUGGED DRAIN. ALL WORK AND FASTENING HARDWARE REQUIRED WILL BE INCLUDED IN THE UNIT COST FOR PLUG EXISTING FLOOR DRAINS.



PLUG EXISTING DECK DRAIN
 (QUANTITY = 4 EACH)
 SEE LOCATIONS ABOVE



BITUMINOUS APPROACH TAPER DETAIL

REVISIONS	
NAME	DATE

ILLINOIS DEPARTMENT OF TRANSPORTATION

**BRIDGE CONSTRUCTION
 DETAIL**

SN #041-0080

SCALE: VERT. _____
 HORIZ. _____
 DATE _____

DRAWN BY _____
 CHECKED BY _____