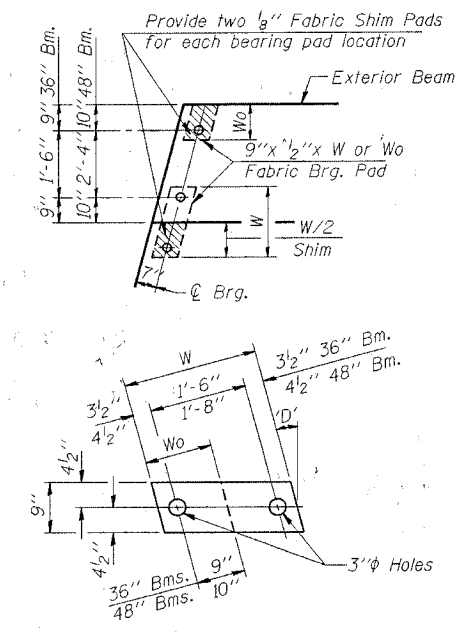
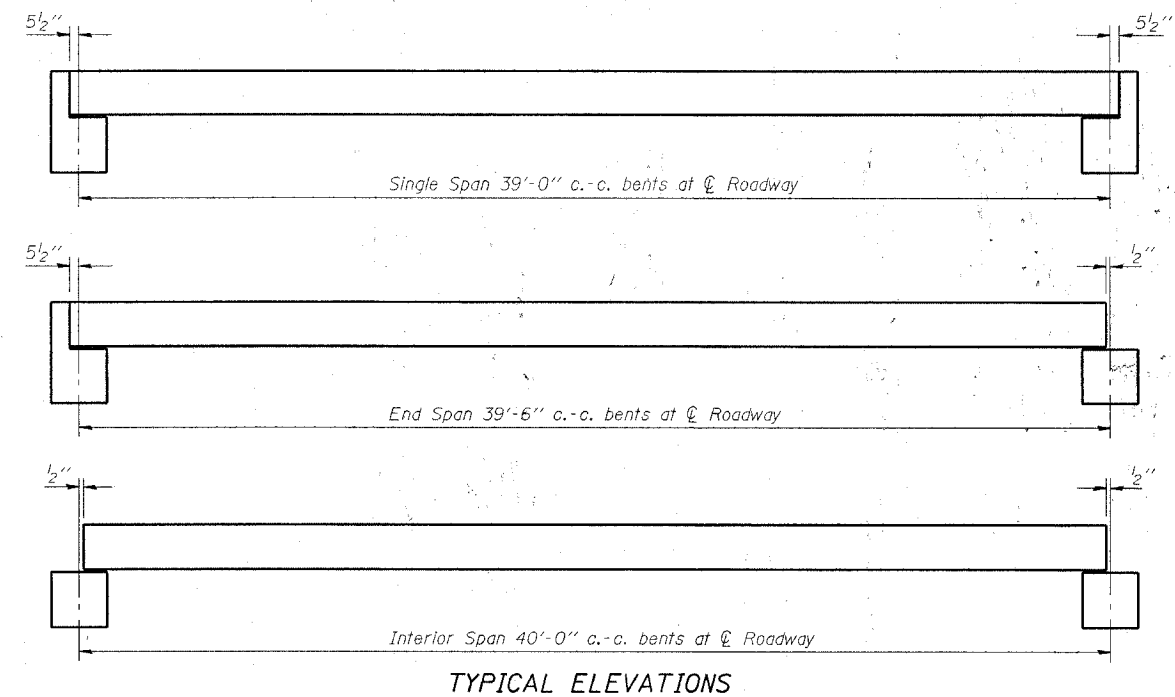
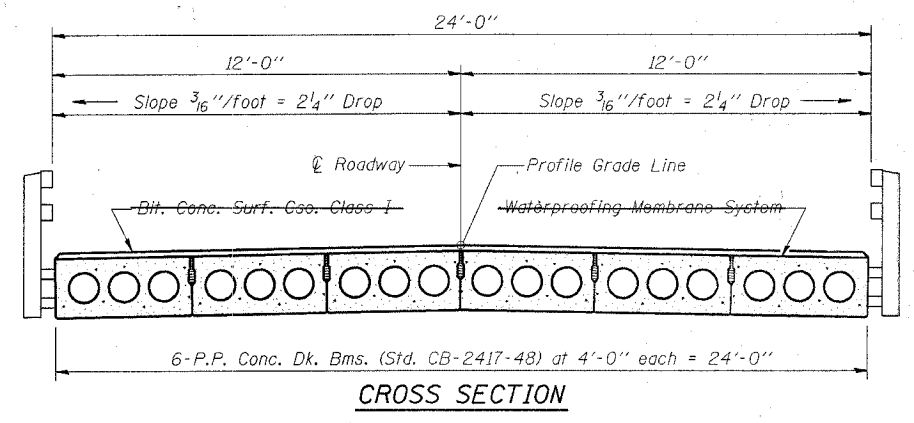
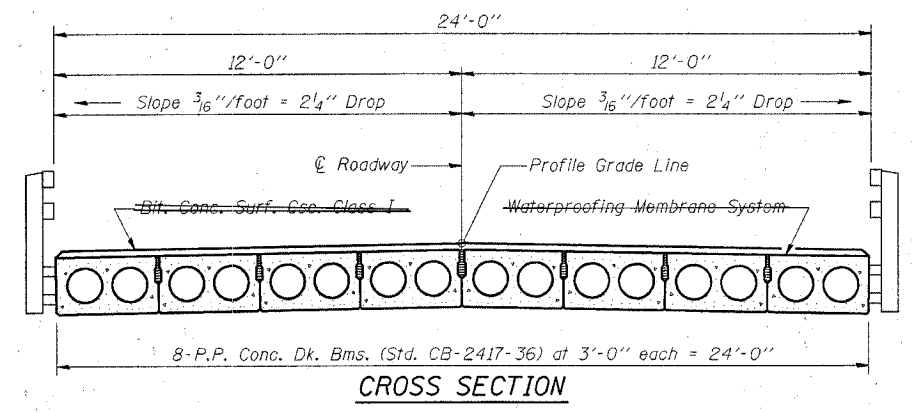


ATE.	SECTION	COUNTY	TOTAL SHEETS	SHEET NO.
	97-09110-00-BR	WAYNE	14	8
FED. ROAD DIST. NO. 1		ILLINOIS	FED. AID PROJECT NO.	
CONTRACT # 97300				



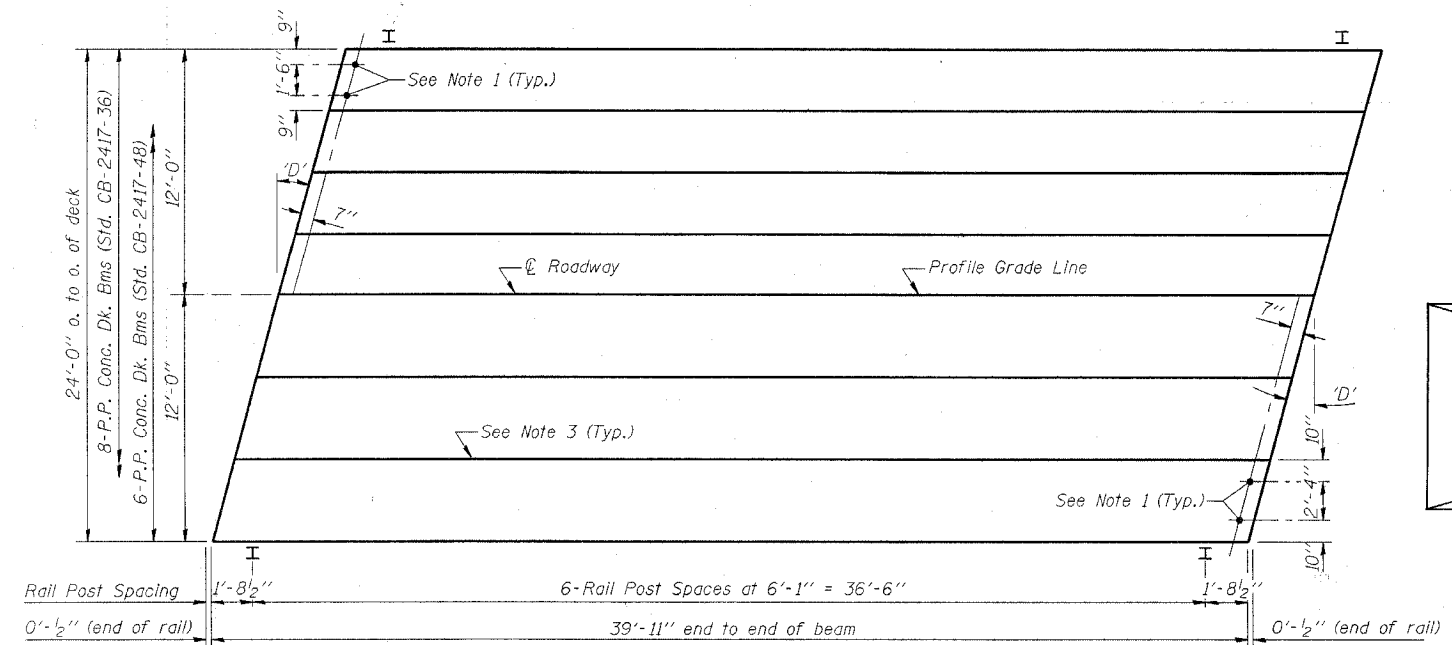
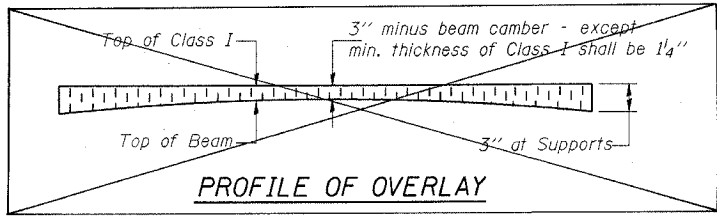
Beam	W	Wo
36"	2'-1"	1'-0 1/2"
48"	2'-5"	1'-2 1/2"

1/2" FABRIC BRG. PAD DETAILS

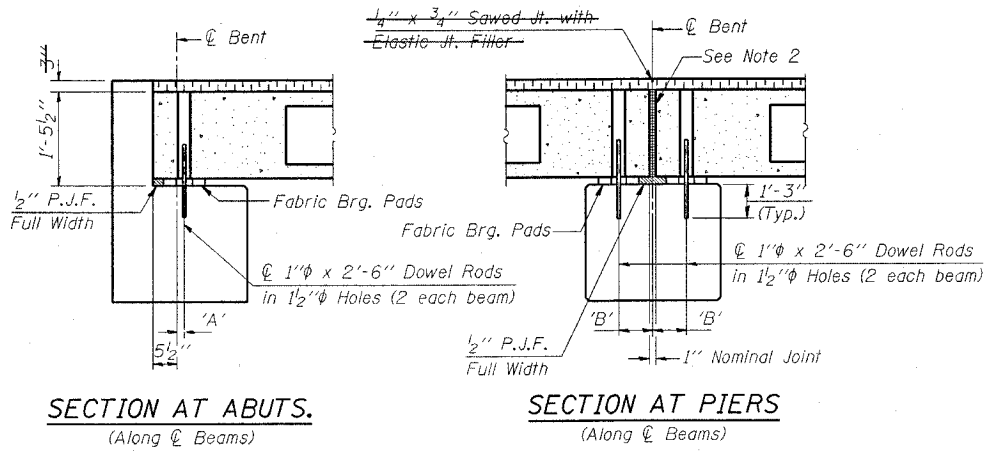


DIMENSIONS 'A' AND 'B'

'D'	5°	10°	15°	20°	25°	30°
A	1 1/2"	1 5/8"	1 3/4"	1 7/8"	2 1/8"	2 5/8"
B	7 1/2"	7 5/8"	7 3/4"	8"	8 1/4"	8 5/8"



- NOTES**
- After beams have been erected, holes shall be drilled into substructure and anchor dowels placed. Dowel holes shall be filled with non-shrink grout to top of beam and allowed to cure min. 24 hrs. prior to grouting the shear keys.
 - Nominal 1" joint at \O Pier shall be filled with non-shrink grout.
 - Longitudinal keys shall be grouted with non-shrink grout.



QUANTITIES FOR ONE SPAN

P.P. Conc. Dk. Bm. 17" Dp.	960 Sq. Ft.
Steel Railing	80 Ft.
Bit. Conc. Surf. Cso. Class I	13.0 Tons
Waterproofing Membrane System	106.7 Sq. Yds.

P.P.C. DECK BEAM SUPERSTRUCTURE			
24' RDWY.	17" BMS.	40' SPAN	LEFT
STANDARD CS-2417-40L			

Illinois Department of Transportation

PASSED NOVEMBER 1, 1995

Prof. J. Kasper
Engineer of Bridge Design

APPROVED NOVEMBER 1, 1995

Ralph E. Anderson
Engineer of Bridges and Structures

18-H 02155