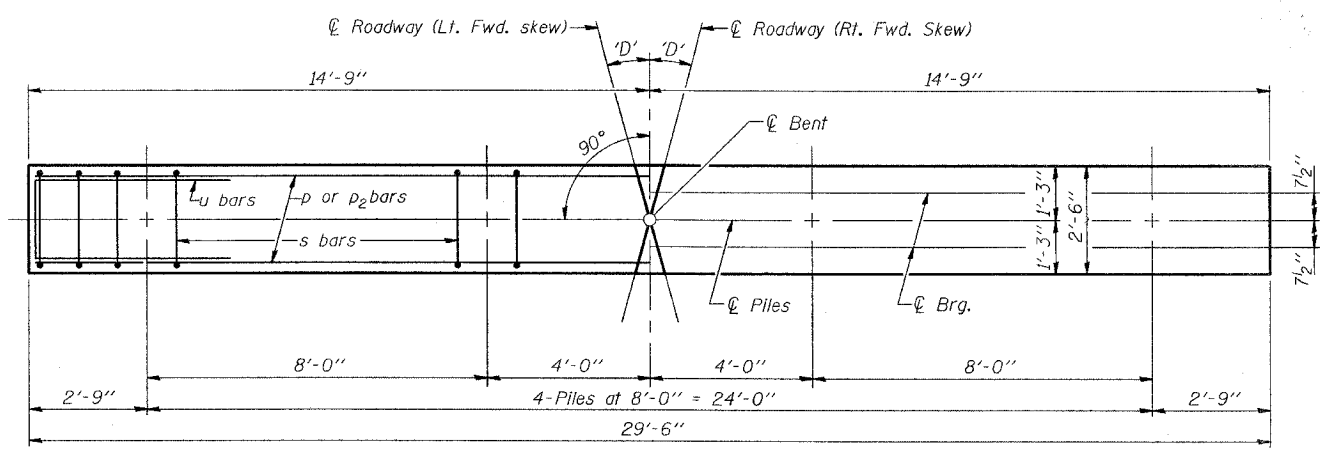
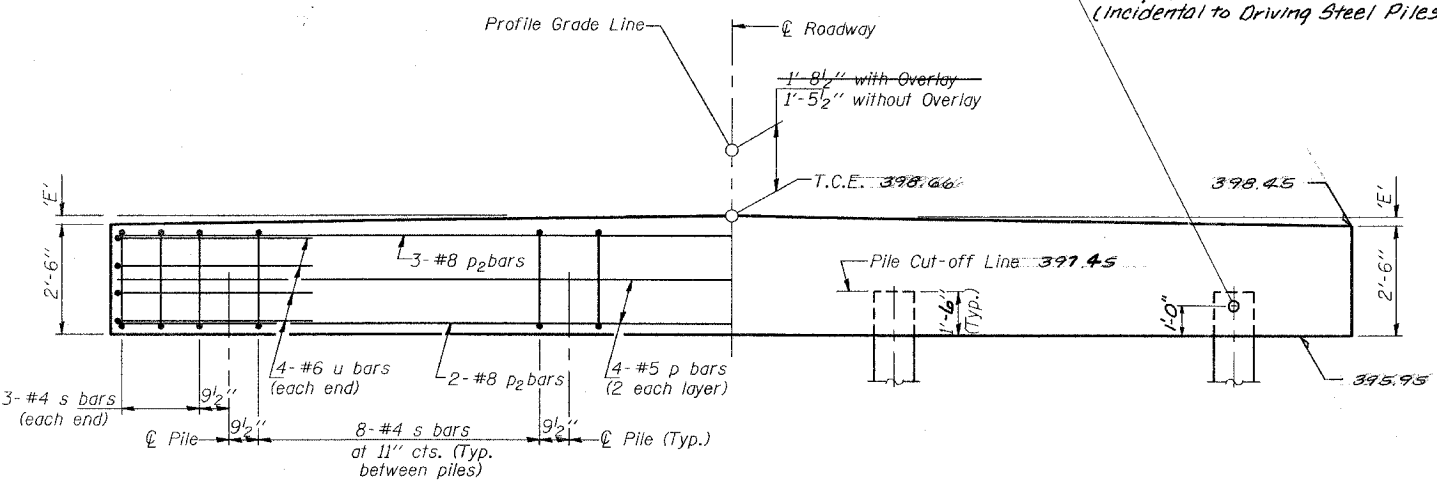


SECTION	97-09110-00-BR	TOTAL SHEETS	14	SHEET NO.	12
COUNTY	WAYNE	ROAD DIST.	GROVER	STA.	TO STA.
CONTRACT # 95388					



PLAN
('D' = Designated Skew Angle)



ELEVATION

DIMENSION 'E'

GRADE	'D'=25°		'D'=30°	
	UPGRADE END	DOWNGRADE END	UPGRADE END	DOWNGRADE END
0%	2 1/2"	2 1/2"	2 3/8"	2 3/8"
Over 0% to 1%	2 1/8"	2 7/8"	2"	2 7/8"
Over 1% to 2%	1 3/8"	3 5/8"	1"	3 3/4"
Over 2% to 3%	5/8"	4 3/8"	1/8"	4 5/8"
Over 3% to 4%	0"	5 1/2"		

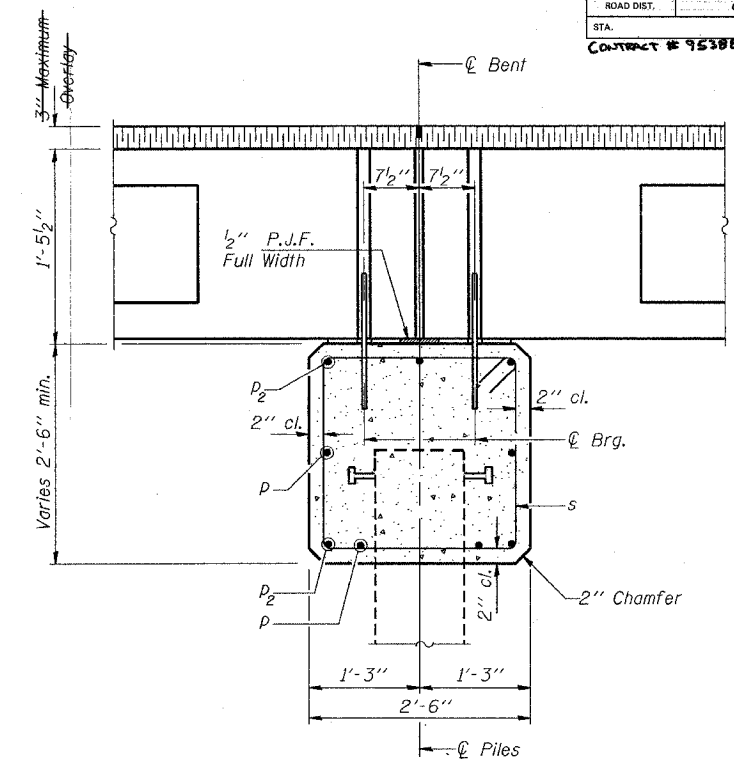
MAXIMUM PILE LOADS

SPAN	TONS
25'	33
30'	37
35'	41
40'	44

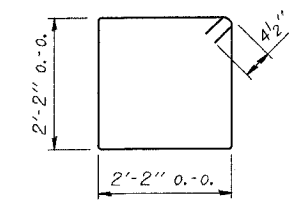
Longer of Either Span Supported by Pier.

DESIGN STRESSES

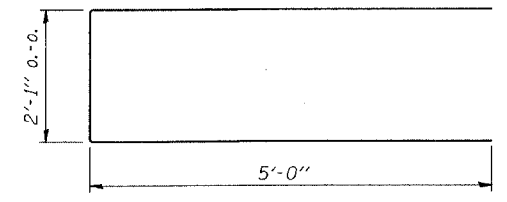
f'c = 3,500 psi
fy = 60,000 psi



SECTION THRU PIER
(At Right Angles)



Bar s



Bar u

BILL OF MATERIAL FOR ONE PIER

Bar	No.	Size	Length	Shape
p	4	#5	29'-2"	—
p2	5	#8	29'-2"	—
s	30	#4	9'-5"	□
u	8	#6	12'-1"	—
Concrete Structures			7.1	Cu. Yds.
Reinforcement Bars			850	Lbs.

NOTE

Reinforcement bars shall conform to A.A.S.H.T.O. M-31, M-42 or M-53, Grade 60.

Illinois Department of Transportation

PASSED November 1, 1995
Gregory J. Kasper
Engineer of Bridge Design

APPROVED November 1, 1995
Ralph E. Anderson
Engineer of Bridges and Structures

ISSUED 11-1-95

P.P.C. DECK BEAMS
PILE BENT PIER

24' RDWY. | 17" BMS. | 'D'=25° OR 30°

STANDARD CP-2417-30

Wed, Feb 5 08:03:50 1997 C:\PI\01\value\N7060401\caf_pay_rusr\proj\loc2\brstdoc\empier2.prf