

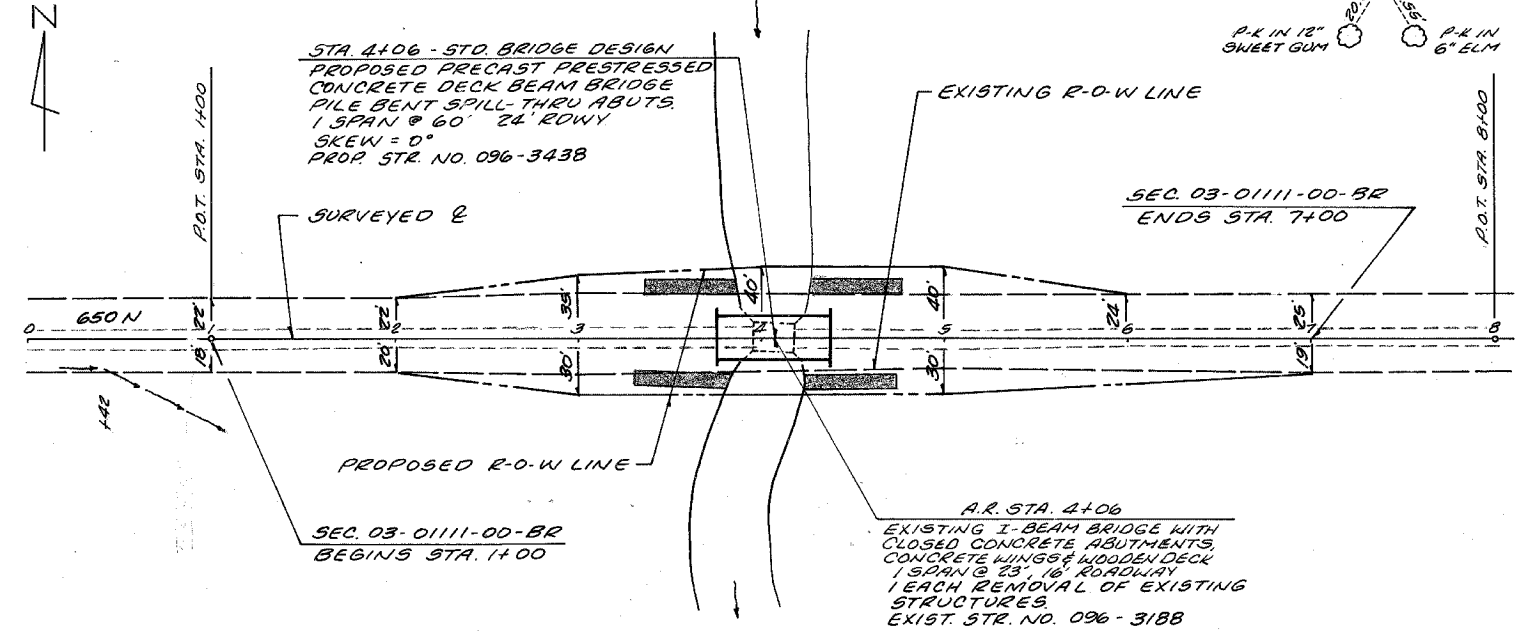
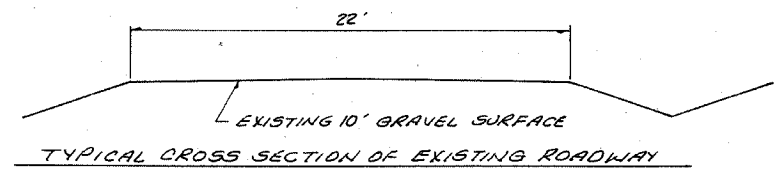
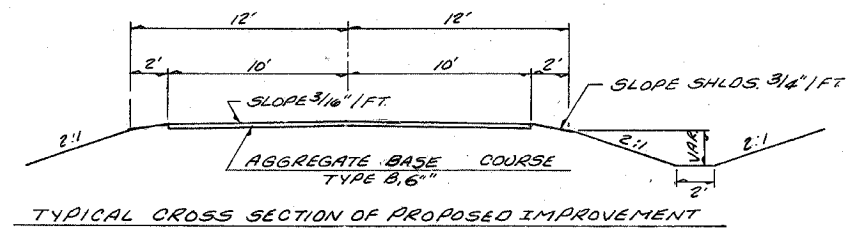
F.A.S. ROUTE NO.	SECTION	COUNTY	TOTAL SHEETS	SHEET
03-0111-00-BR	WAYNE	17	2	
STA. 0+00	TO STA. 8+00			
FED. ROAD DIST. NO.	ILLINOIS	PROJECT		

ELDON LONG
PARCEL NO. 2

FARM LAND DEVELOPMENT
PARCEL NO. 1

P.O.T. STA. 8+00
SURE 7 I.P.
P.K. IN 12" SWEET GUM
P.K. IN 6" ELM

P.O.T. STA. 1+00
SURE 7 I.P.
P.K. IN 15" SYCAMORE
40'00" CTR. DEAD END SIGN POST



SEC. 03-0111-00-BR
ENDS STA. 7+00

STA. 1+06 - STD. BRIDGE DESIGN
PROPOSED PRECAST PRESTRESSED
CONCRETE DECK BEAM BRIDGE
PILE BENT SPILL-THRU ABUTS
1 SPAN @ 60' 24' RDWY
SKEW = 0°
PROP. STR. NO. 096-3438

A.R. STA. 4+06
EXISTING I-BEAM BRIDGE WITH
CLOSED CONCRETE ABUTMENTS,
CONCRETE WINGS & WOODEN DECK
1 SPAN @ 23' 16" ROADWAY
1 EACH REMOVAL OF EXISTING
STRUCTURES
EXIST. STR. NO. 096-3188

ELDON LONG
PARCEL NO. 2

DWIGHT LEGG
PARCEL NO. 3

EARTHWORK SCHEDULE

EARTH EXCAVATION	=	346 CU. YD.
EARTH EXCAVATION ADJUSTED 25%	=	260 CU. YD.
CHANNEL EXCAVATION	=	187 CU. YD.
CHANNEL EXCAVATION ADJUSTED 25%	=	140 CU. YD.
EMBANKMENT	=	820 CU. YD.
FURNISHED EXCAVATION	=	420 CU. YD.

B.M. #1 ELEV. 392.09
NEW IN 15" SYCAMORE
21' RT. STA. 0+89

TREE REMOVAL, ACRES
RT. STA. 2+0 - 7+0 = 0.3 ACRES
LT. STA. 4+26 - 6+0 = 0.1 ACRES
TOTAL = 0.4 ACRES

CONSTRUCT TRANSITION
FROM EXIST. ROWY TO PROP. 24' ROWY.
STA. 1+00 TO STA. 1+50
STA. 6+50 TO STA. 7+00
QUANTITIES INCLUDED IN THOSE LISTED.

B.M. #2 ELEV. 392.76
NEW IN 12" SWEET GUM
16' RT. STA. 7+89

SEEDING, CLASS 2 (SPECIAL)
STA. 1+00 - 7+00 = 0.4 ACRES

STONE RIPRAP DITCH
RT. STA. 3+30 - 3+80 = 15 TON
LT. STA. 3+35 - 3+85 = 15 "
RT. STA. 4+22 - 4+72 = 15 "
LT. STA. 4+27 - 4+77 = 15 "
TOTAL = 60 TON

PERIMETER EROSION BARRIER
12 FOOT @ EACH CORNER OF
BRIDGE @ TDE OF CHANNEL
SLOPE = 56 FOOT

TEMPORARY DITCH CHECKS
LT. & RT. STA. 3+50 = 2 EACH
LT. & RT. STA. 4+50 = 2 EACH
TOTAL = 4 EACH

UTILITIES : NONE

