

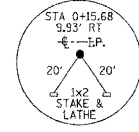
GENERAL NOTES:

THIS SECTION SHALL BE CONSTRUCTED IN ACCORDANCE WITH THE PLANS, SPECIAL PROVISIONS AND "STANDARD SPECIFICATIONS FOR ROAD AND BRIDGE CONSTRUCTION", ADOPTED JANUARY 1, 2002.

THE WORK INVOLVED ON THIS SECTION CONSISTS OF THE REMOVAL OF THE EXISTING STRUCTURE, THE CONSTRUCTION OF A 60 FOOT LONG SINGLE SPAN PRECAST, PRESTRESSED CONCRETE DECK BEAM BRIDGE, EARTH APPROACHES, AGGREGATE SURFACE COURSE AND OTHER MISCELLANEOUS ITEMS NECESSARY TO COMPLETE THIS SECTION.

ALL ELEVATIONS ARE BASED ON U.S.G.S. MEAN SEA LEVEL DATUM.

IT SHALL BE THE CONTRACTOR'S RESPONSIBILITY TO CONTACT ALL THE UTILITIES, AFFECTING THE PROJECT, PRIOR TO CONSTRUCTION.



NOTE: CONSTRUCT TRANSITIONS:
STA 1+65 TO STA 2+15
STA 7+95 TO STA 8+45
ALL QUANTITIES ARE INCLUDED IN THE PROPOSAL.

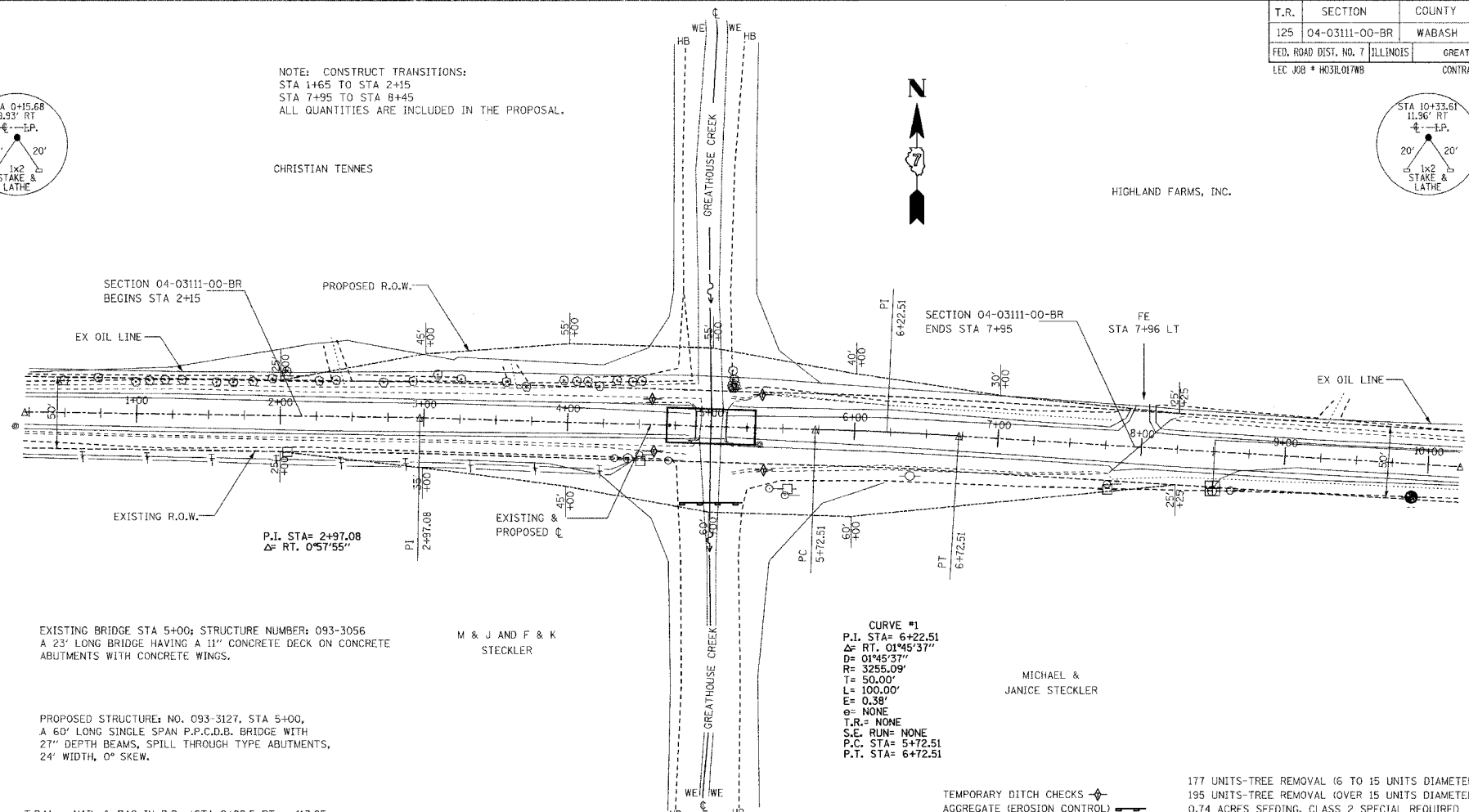
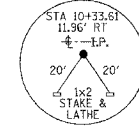
T.R.	SECTION	COUNTY	TOTAL SHEETS	SHEET NO.
125	04-03111-00-BR	WABASH	13	2

323 W. 3RD. ST.
P.O. BOX 160
MT. CARMEL, IL
62863

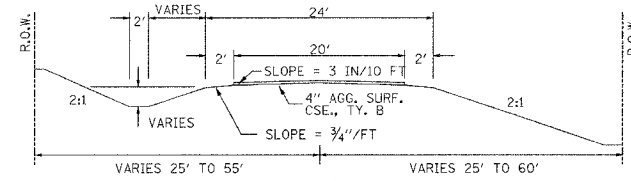
PHONE: (618)-262-8651
FAX: (618)-263-3327

405 W. STATE ST.
PRINCETON, IN
47670

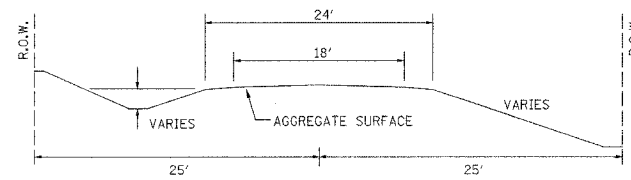
PHONE: (812)-386-7611
FAX: (812)-385-2812



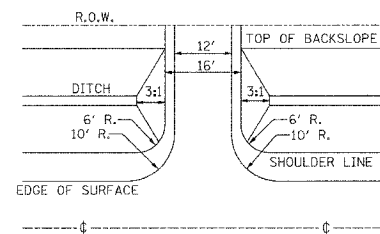
TYPICAL CROSS SECTION PROPOSED



TYPICAL CROSS SECTION EXISTING



FIELD ENTRANCE DETAIL



UTILITIES:

J.U.L.I.E. 1-800-892-0123

VERIZON
225 E. CHESTNUT
OLNEY, IL 62450
618-395-6181

MT. CARMEL PUBLIC UTILITY
316 MARKET STREET
MT. CARMEL, IL 62863
618-262-5151

COUNTRY MARK COOP
812-838-8500

NOTE: CONSTRUCT SPECIAL DITCH

STA 2+50 TO STA 4+69.25 LT & RT
STA 5+30.75 TO STA 7+50 LT & RT

NOTE: CONSTRUCT STONE RIPRAP DITCH

STA 4+60 TO STA 4+70 LT & RT (0.48 TON/LIN FT)
STA 5+31 TO STA 5+41 LT & RT (0.48 TON/LIN FT)
19 TON STONE RIPRAP DITCH ALLOWED IN PROPOSAL.

SEE SHEET NO. 13 FOR STONE RIPRAP DITCH DETAIL.

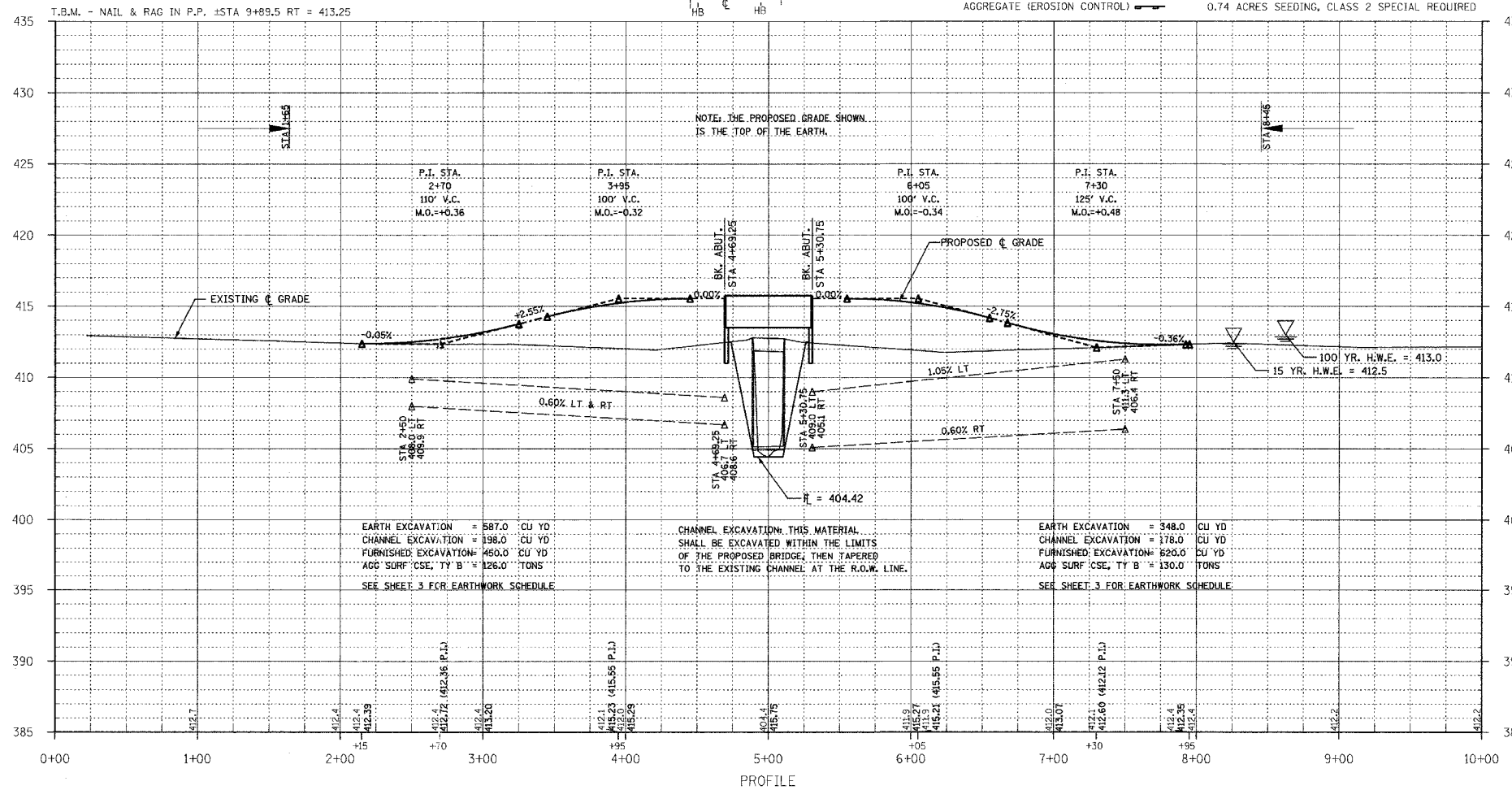
EXISTING BRIDGE STA 5+00; STRUCTURE NUMBER: 093-3056
A 23' LONG BRIDGE HAVING A 11" CONCRETE DECK ON CONCRETE ABUTMENTS WITH CONCRETE WINGS.

M & J AND F & K
STECKLER

PROPOSED STRUCTURE: NO. 093-3127, STA 5+00,
A 60' LONG SINGLE SPAN P.P.C.D.B. BRIDGE WITH
27" DEPTH BEAMS, SPILL THROUGH TYPE ABUTMENTS,
24' WIDTH, 0° SKEW.

CURVE #1
P.I. STA= 6+22.51
A= RT. 01'45"37"
D= 01'45"37"
R= 3255.09'
T= 50.00'
L= 100.00'
E= 0.38'
e= NONE
T.R.= NONE
S.E. RUN= NONE
P.C. STA= 5+72.51
P.T. STA= 6+72.51

MICHAEL &
JANICE STECKLER



EARTH EXCAVATION = 587.0 CU YD
CHANNEL EXCAVATION = 198.0 CU YD
FURNISHED EXCAVATION = 450.0 CU YD
AGG SURF 'CSE, TY B' = 126.0 TONS
SEE SHEET 3 FOR EARTHWORK SCHEDULE

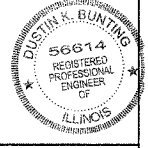
CHANNEL EXCAVATION THIS MATERIAL
SHALL BE EXCAVATED WITHIN THE LIMITS
OF THE PROPOSED BRIDGE, THEN TAPERED
TO THE EXISTING CHANNEL AT THE R.O.W. LINE.

EARTH EXCAVATION = 348.0 CU YD
CHANNEL EXCAVATION = 178.0 CU YD
FURNISHED EXCAVATION = 620.0 CU YD
AGG SURF 'CSE, TY B' = 130.0 TONS
SEE SHEET 3 FOR EARTHWORK SCHEDULE

177 UNITS-TREE REMOVAL (6 TO 15 UNITS DIAMETER)
195 UNITS-TREE REMOVAL (OVER 15 UNITS DIAMETER)
0.74 ACRES SEEDING, CLASS 2 SPECIAL REQUIRED

PROFESSIONAL
DESIGN FIRM
LAND SURVEY &
PROFESSIONAL
ENGINEERING
CORPORATION

184-000887
(62-432435)(35-002769)



DUSTIN K. BUNTING

NAME

SIGNATURE

DATE 02-04-05

11-30-05

EXPIRES

TOWNSHIP ROUTE 125
GREATHOUSE CREEK
WABASH COUNTY, ILLINOIS

SHEET TITLE:

PLAN & PROFILE

SCALE: VARIES

BY: EKB

DATE: 08/20/04

REV:

2 OF 13

SHEETS

SHEET NO.

2