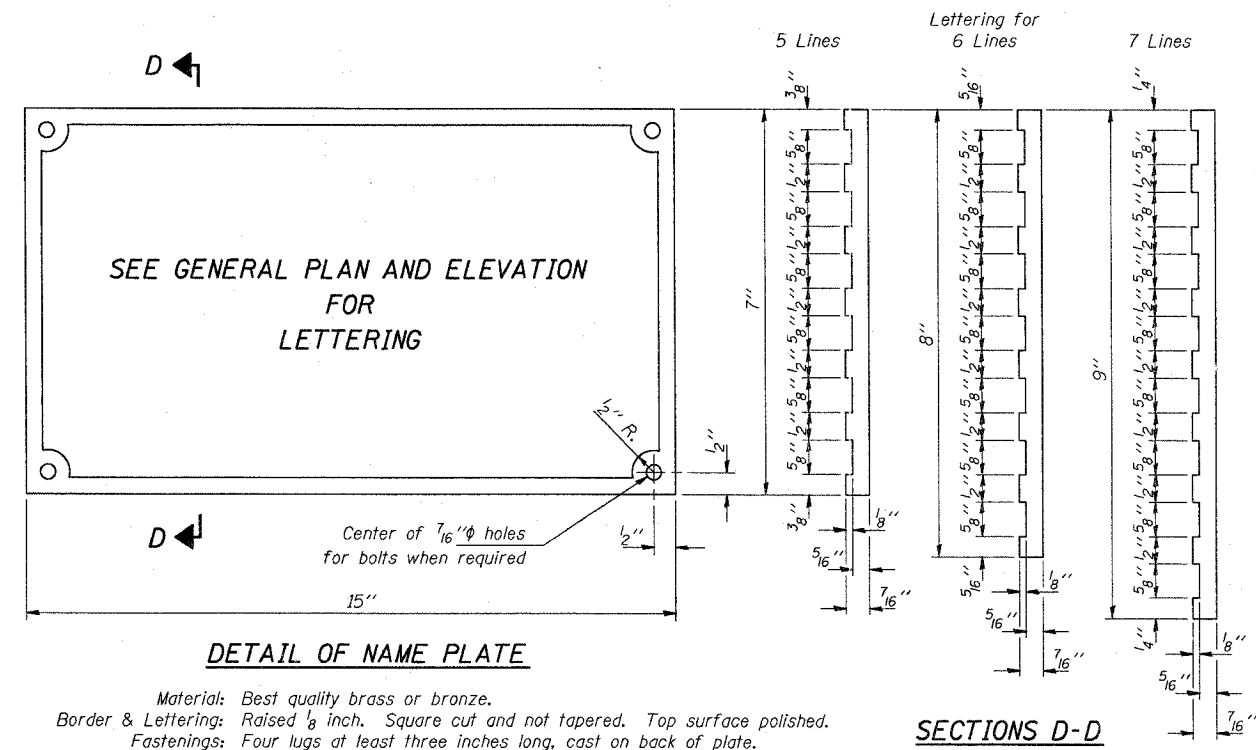


95A19

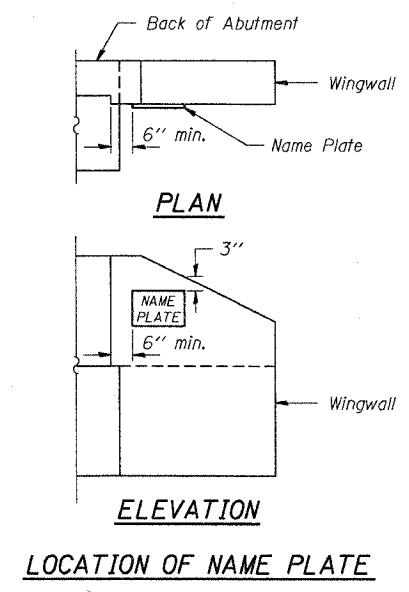


SEE GENERAL PLAN AND ELEVATION  
 FOR  
 LETTERING

**DETAIL OF NAME PLATE**

Material: Best quality brass or bronze.  
 Border & Lettering: Raised  $\frac{1}{8}$  inch. Square cut and not tapered. Top surface polished.  
 Fastenings: Four lugs at least three inches long, cast on back of plate.

**SECTIONS D-D**



**LOCATION OF NAME PLATE**

Jul 1 15:15:19 1996 c:\p105\queue\queue3\ac\_fay\_usr\project\br-stdppe\engr-a1.prf

Illinois Department of Transportation	
PASSED November 1, 1995 <i>Greg J. Kasper</i> Engineer of Bridge Design	
APPROVED November 1, 1995 <i>Ralph E. Anderson</i> Engineer of Bridges and Structures	
56-H-1 (REV. 5/81)	

<b>NAME PLATE</b>
<b>STANDARD CN</b>