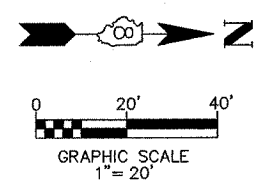
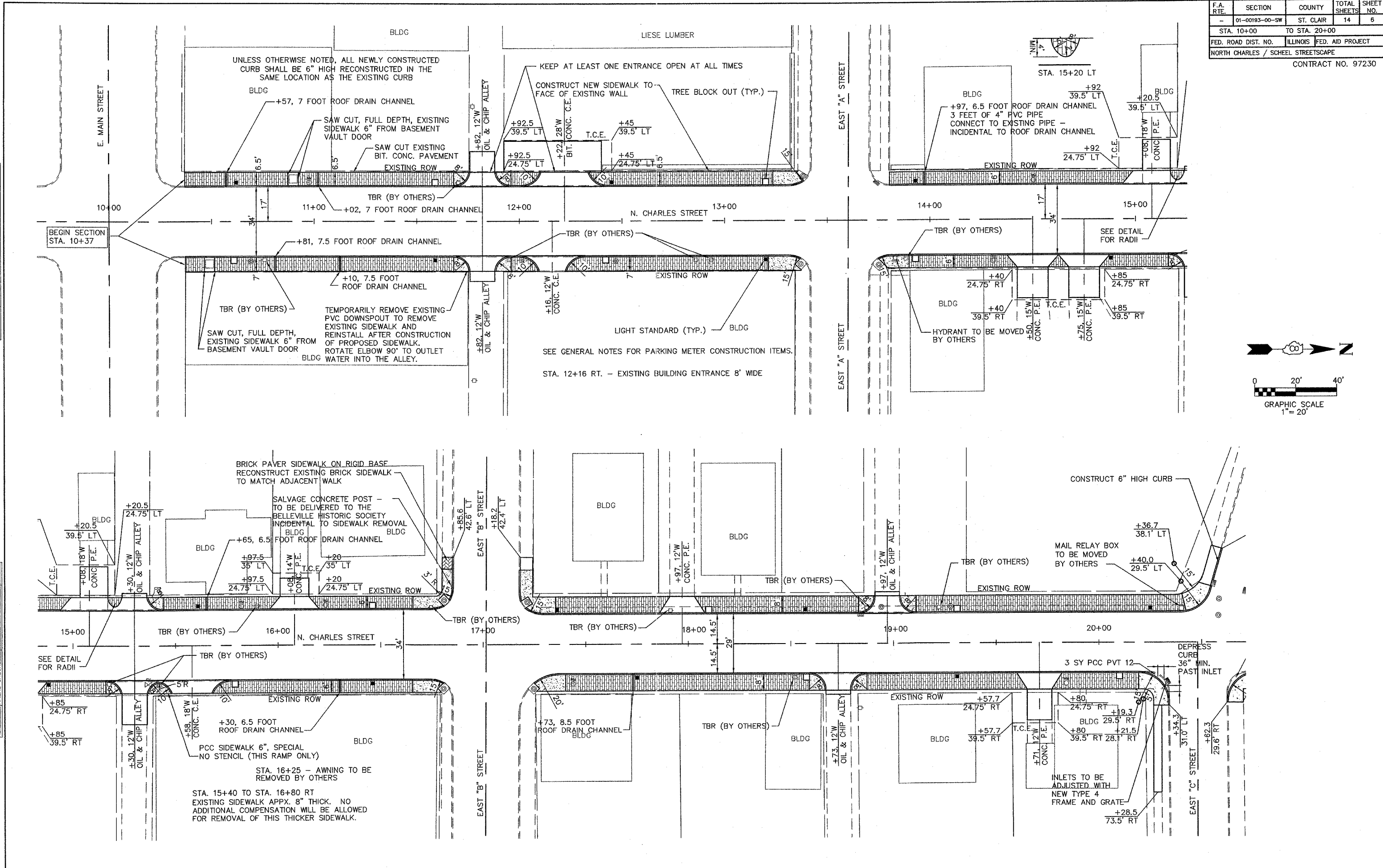


F.A. RTE.	SECTION	COUNTY	TOTAL SHEETS	SHEET NO.
-	01-00193-00-SW	ST. CLAIR	14	6
STA. 10+00		TO STA. 20+00		
FED. ROAD DIST. NO.		ILLINOIS FED. AID PROJECT		
NORTH CHARLES / SCHEEL STREETScape		CONTRACT NO. 97230		

BY	DATE
FINAL SURVEY PLOTTED	
NOTE BOOK TEMPLATE	
AREAS CHECKED	
NO.	

BY	DATE
ORIGINAL SURVEY PLOTTED	
NOTE BOOK TEMPLATE	
AREAS CHECKED	
NO.	



STA. 16+25 - AWNING TO BE REMOVED BY OTHERS

STA. 15+40 TO STA. 16+80 RT EXISTING SIDEWALK APPX. 8" THICK. NO ADDITIONAL COMPENSATION WILL BE ALLOWED FOR REMOVAL OF THIS THICKER SIDEWALK.

SEE GENERAL NOTES FOR PARKING METER CONSTRUCTION ITEMS.

STA. 12+16 RT. - EXISTING BUILDING ENTRANCE 8' WIDE

SEE DETAIL FOR RADII

DEPRESS CURE 36" MIN. PAST INLET

3 SY PCC PVT 12"

INLETS TO BE ADJUSTED WITH NEW TYPE 4 FRAME AND GRATE