

CONTRACT NO. 97245

- BICYCLE ROUTE
- SIDEWALK REMOVAL (SEE CURB & GUTTER / SIDEWALK SCHEDULE)
- DRIVEWAY PAVEMENT REMOVAL (SEE DRIVEWAY SCHEDULE)



THOUVENOT, WADE & MOERCHEN, INC.
ENGINEERS • SURVEYORS • PLANNERS



CORPORATE OFFICE

4940 OLD COLLINGSVILLE RD.
SWANSEA, ILLINOIS 62226
TEL (618) 624-4488
FAX (618) 624-6688
corp@twm-inc.com

WATERLOO OFFICE

118 EAST THIRD STREET
WATERLOO, ILLINOIS 62298
TEL (618) 939-5050
FAX (618) 939-3938
waterloo@twm-inc.com

ST. LOUIS OFFICE

1001 CRAIG ROAD, SUITE 260
ST. LOUIS, MISSOURI 63146
TEL (314) 236-5052
FAX (314) 872-2194
stlouis@twm-inc.com

PROFESSIONAL REGISTRATIONS

ILLINOIS PROFESSIONAL DESIGN FIRM	LICENSE NO.
PROFESSIONAL ENGINEERING CORP.	14-001220
PROFESSIONAL STRUCTURAL ENGR. CORP.	62-005370
ILLINOIS PROF. LAND SURVEYING CORP.	81-005202
ILLINOIS PROF. LAND SURVEYING CORP.	04-000029

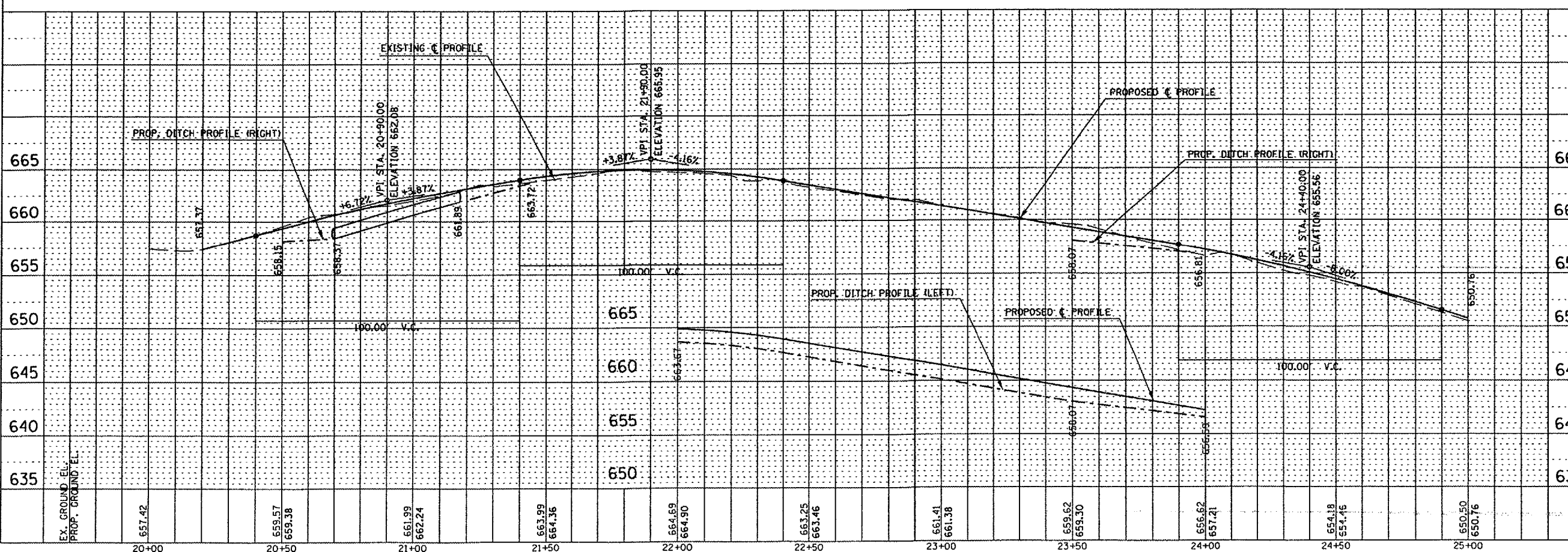
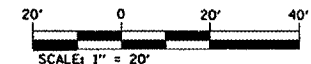
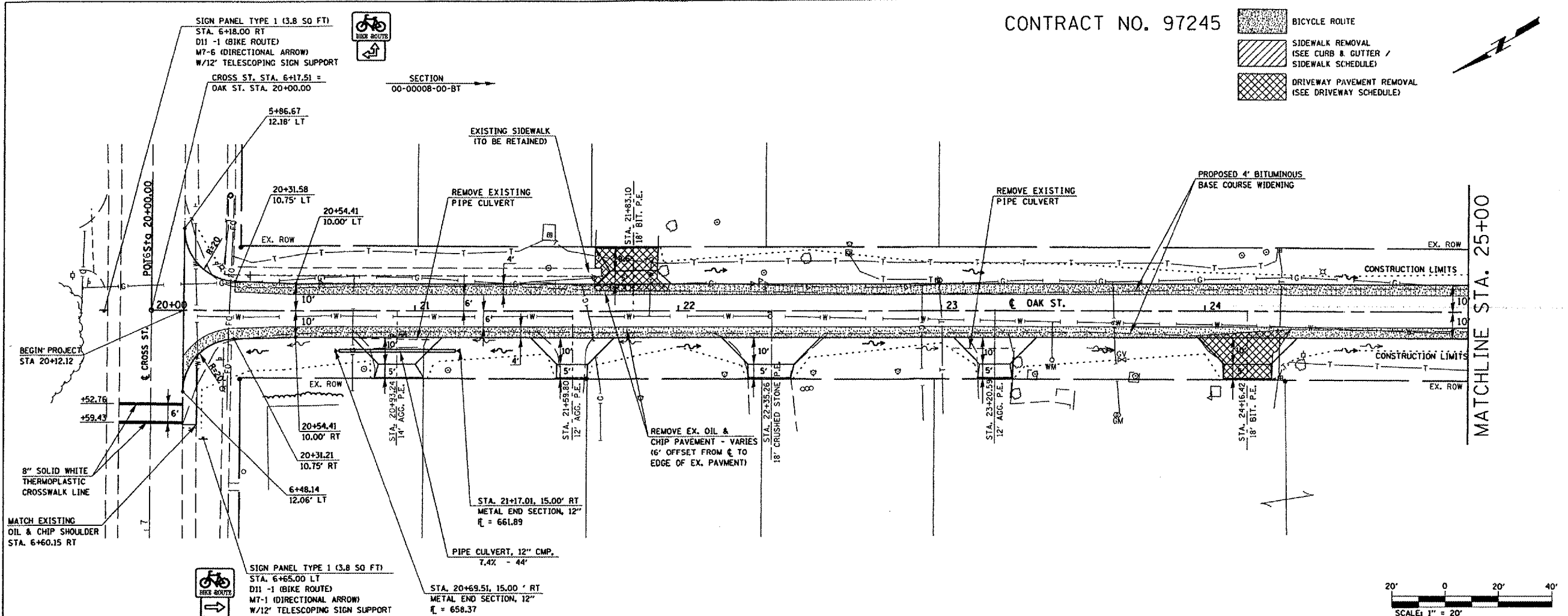
MISSOURI PROFESSIONAL ENGR. CORP. NC 000528
MISSOURI LAND SURVEYING CORP. NC 000346

SEAL

Renewed Date: _____
Signature Date: _____
STATEMENT OF RESPONSIBILITY
I hereby certify that the documents herein to be authenticated by my seal is restricted to this sheet, and I hereby disclaim any responsibility for all other drawings, specifications, estimates, reports or other documents or instruments relating to or intended to be utilized for any other part of the architectural, engineering or survey project.

DATE	
BY	
PLAN	
REVISED	
NOTES	
NO. 1	
NO. 2	
NO. 3	
NO. 4	
NO. 5	
NO. 6	
NO. 7	
NO. 8	
NO. 9	
NO. 10	

DATE	
BY	
PROFILE	
REVISED	
NOTES	
NO. 1	
NO. 2	
NO. 3	
NO. 4	
NO. 5	
NO. 6	
NO. 7	
NO. 8	
NO. 9	
NO. 10	



PLAN AND PROFILE SHEETS
OAK ST.
BIKE TRAIL
VILLAGE OF SHILOH
ST. CLAIR COUNTY, ILLINOIS

REV.	DATE	DESCRIPTION
△	/ /	
△	/ /	

DRAWN BY:	SGR	SHEET
DESIGNED BY:		9
CHECKED BY:		
CONTRACT NUMBER:		
PROJECT NUMBER:	99151	

- ISSUED FOR REVIEW
- ISSUED FOR BIDDING
- ISSUED FOR CONSTR.
- RECORD DRAWING