

CONTRACT NO. 97245

THOUVENOT, WADE & MOERCHEN, INC.
ENGINEERS ♦ SURVEYORS ♦ PLANNERS



CORPORATE OFFICE
4940 OLD COLLINSVILLE RD.
SWANSEA, ILLINOIS 62226
TEL (618) 624-4488
FAX (618) 624-6688
corp@twm-inc.com

WATERLOO OFFICE
118 EAST THIRD STREET
WATERLOO, ILLINOIS 62298
TEL (618) 939-5050
FAX (618) 939-3938
waterloo@twm-inc.com

ST. LOUIS OFFICE
1001 CRAIG ROAD, SUITE 260
ST. LOUIS, MISSOURI 63146
TEL (314) 236-5052
FAX (314) 872-2194
stlouis@twm-inc.com

PROFESSIONAL REGISTRATIONS

ILLINOIS PROFESSIONAL DESIGN FIRM	184-001220
PROFESSIONAL ENGINEERING CORP.	62-035370
PROFESSIONAL STRUCTURAL ENGR. CORP.	81-000202
ILLINOIS PROF. LAND SURVEYING CORP.	048-000029
MISSOURI PROFESSIONAL ENGR. CORP.	MC 001528
MISSOURI LAND SURVEYING CORP.	MC 000346

REVISIONS

Signature Date:

STATEMENT OF RESPONSIBILITY
I hereby certify that the document herein to be authorized by my seal is restricted to this sheet, and I hereby disclaim any responsibility for all other drawings, specifications, estimates, reports or other documents or instruments relating to or intended to be utilized for any other part of the architectural, engineering or survey project.

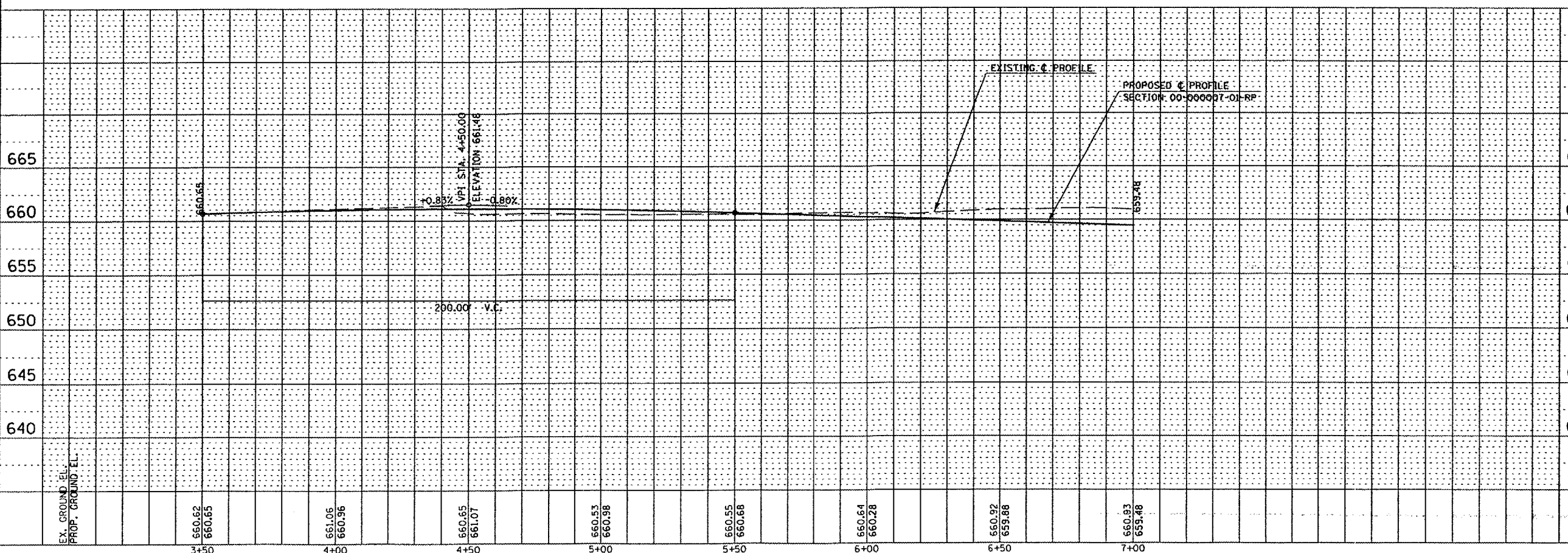
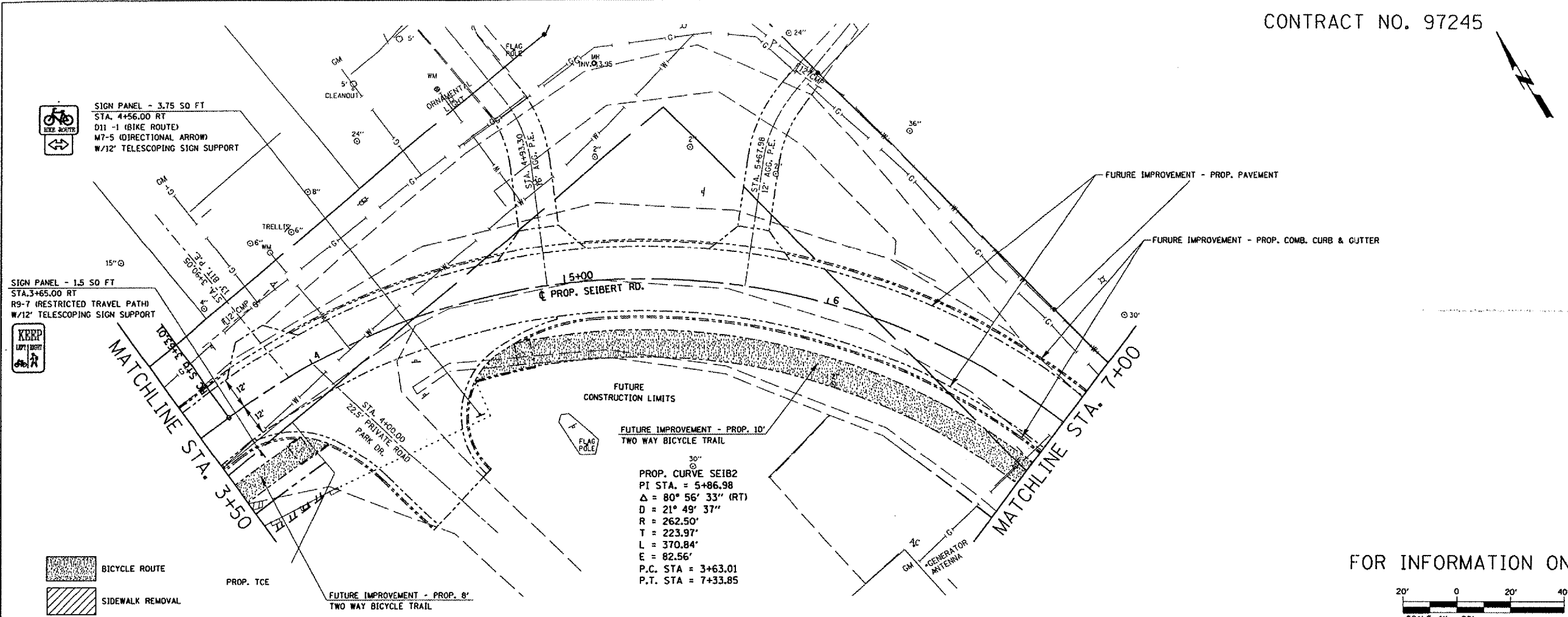
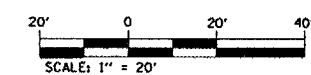
PLAN AND PROFILE SHEETS
SEIBERT RD.

BIKE TRAIL
VILLAGE OF SHILOH
ST. CLAIR COUNTY, ILLINOIS

REV.	DATE	DESCRIPTION
△	/ /	
△	/ /	

DRAWN BY:	SGR	SHEET
DESIGNED BY:		14
CHECKED BY:		
CONTRACT NUMBER		
PROJECT NUMBER	99781	
<input checked="" type="checkbox"/> ISSUED FOR REVIEW <input type="checkbox"/> ISSUED FOR BIDDING <input type="checkbox"/> ISSUED FOR CONSTR. <input type="checkbox"/> RECORD DRAWING		OF 37 SHEETS

FOR INFORMATION ONLY



PLAN

NO.	DATE	BY

REVISIONS

NO.	DATE	BY	DESCRIPTION

PROFILE

NO.	DATE	BY

REVISIONS

NO.	DATE	BY	DESCRIPTION

FILES

NO.	DATE

SIGN PANEL - 3.75 SO FT
STA. 4+56.00 RT
D11 -1 (BIKE ROUTE)
W7-5 (DIRECTIONAL ARROW)
W/12" TELESCOPING SIGN SUPPORT

SIGN PANEL - 1.5 SO FT
STA. 3+65.00 RT
R9-7 (RESTRICTED TRAVEL PATH)
W/12" TELESCOPING SIGN SUPPORT

BICYCLE ROUTE

SIDWALK REMOVAL