

CONTRACT NO. 97245

**THOUVENOT,  
WADE &  
MOERCHEN, INC.**  
ENGINEERS • SURVEYORS • PLANNERS



**CORPORATE OFFICE**

4940 OLD COLLINSVILLE RD.  
SWANSEA, ILLINOIS 62226  
TEL (618) 624-4488  
FAX (618) 624-6688  
corp@twm-inc.com

**WATERLOO OFFICE**

118 EAST THIRD STREET  
WATERLOO, ILLINOIS 62298  
TEL (618) 939-5050  
FAX (618) 939-3938  
waterlooftwm-inc.com

**ST. LOUIS OFFICE**

1001 CRAIG ROAD, SUITE 260  
ST. LOUIS, MISSOURI 63146  
TEL (314) 236-5052  
FAX (314) 872-2194  
stlouis@twm-inc.com

PROFESSIONAL REGISTRATIONS	LICENSE NO.
ILLINOIS PROFESSIONAL DESIGN FIRM	184-09230
PROFESSIONAL ENGINEERING CORP.	62-05379
PROFESSIONAL STRUCTURAL ENGR. CORP.	RI-065202
ILLINOIS PROF. LAND SURVEYING CORP.	048-000029
MISSOURI PROFESSIONAL ENGR. CORP.	MC 000328
MISSOURI LAND SURVEYING CORP.	MC 000346

SEAL

Renewed Date:  
Signature Date:

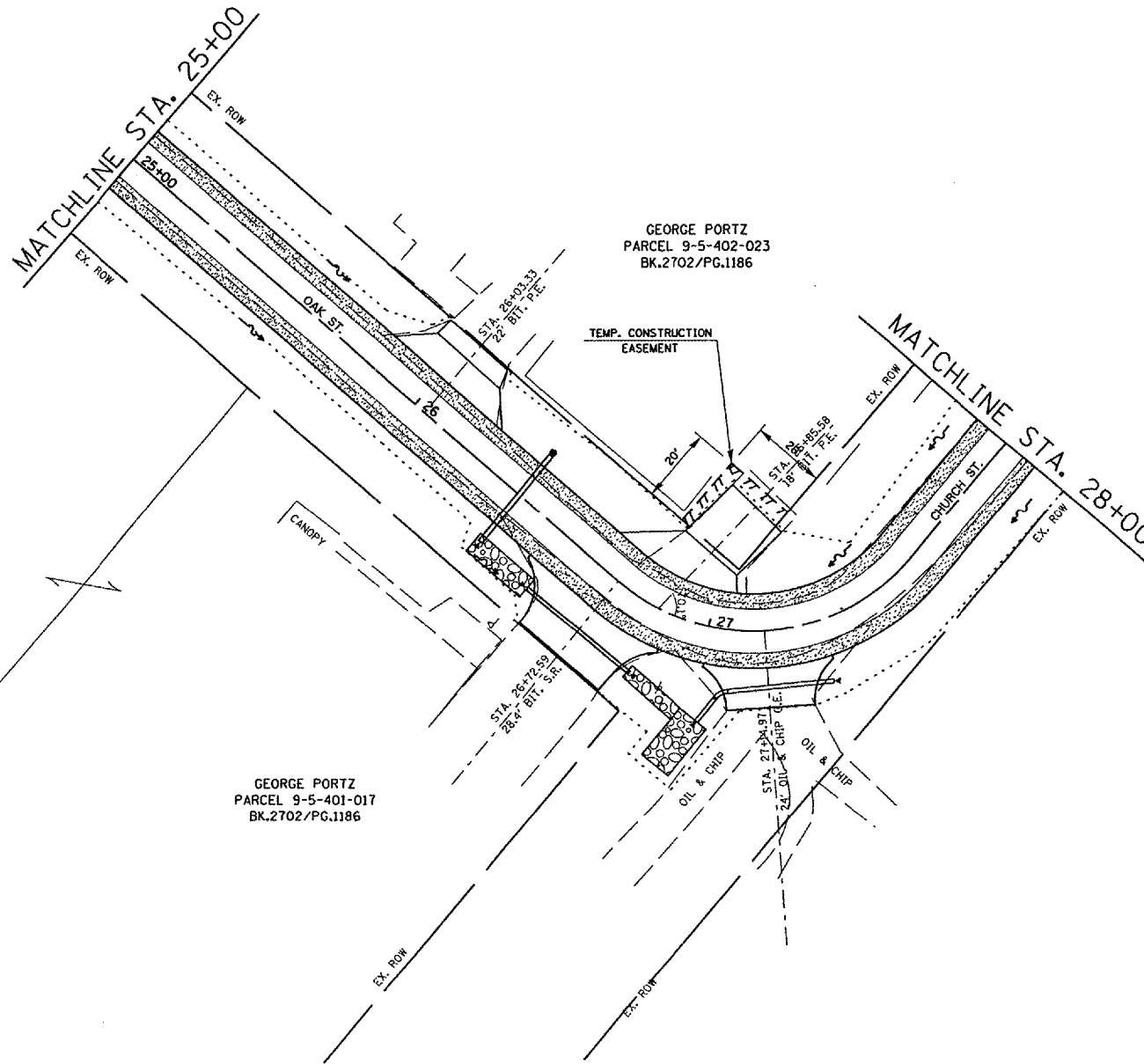
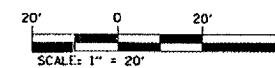
**STATEMENT OF RESPONSIBILITY**  
I hereby confirm that the document herein to be authorized by my seal is restricted to this project, and I hereby assume any responsibility for all other drawings, specifications, estimates, reports or other documents or instruments relating to or intended to be utilized for any other part of the architectural, engineering or survey project.

TITLE:  
**RIGHT-OF-WAY SHEETS  
(OAK/CHURCH ST.)**

PROJECT:  
**BIKE TRAIL  
VILLAGE OF SHILOH  
ST. CLAIR COUNTY, ILLINOIS**

REV.	DATE	DESCRIPTION
△	///	
△	///	

DRAWN BY:	SGK	SHEET
DESIGNED BY:		20
CHECKED BY:		
CONTRACT NUMBER:		
PROJECT NUMBER:	9974	
<input checked="" type="checkbox"/> ISSUED FOR REVIEW <input type="checkbox"/> ISSUED FOR BIDDING <input type="checkbox"/> ISSUED FOR CONSTRUCTION <input type="checkbox"/> RECORD DRAWING		OF 31 SHEETS



PLAN  
REVISED  
NOTED  
NO. 1  
DATE

PROFILE  
REVISED  
NOTED  
NO. 1  
DATE

#FILES  
#DATES

DATE  
BY  
DATE  
BY