

ROUTE NO	SECTION	COUNTY	TOTAL SHEETS	SHEET NO.
FAS 856 C.H. 1	02-00041 -01-RS	MONROE	27	8

FEDERAL AID PROJECT
CONTRACT NO. 97248

WM. H. JR. & EDNA M. MUELLER TRUST

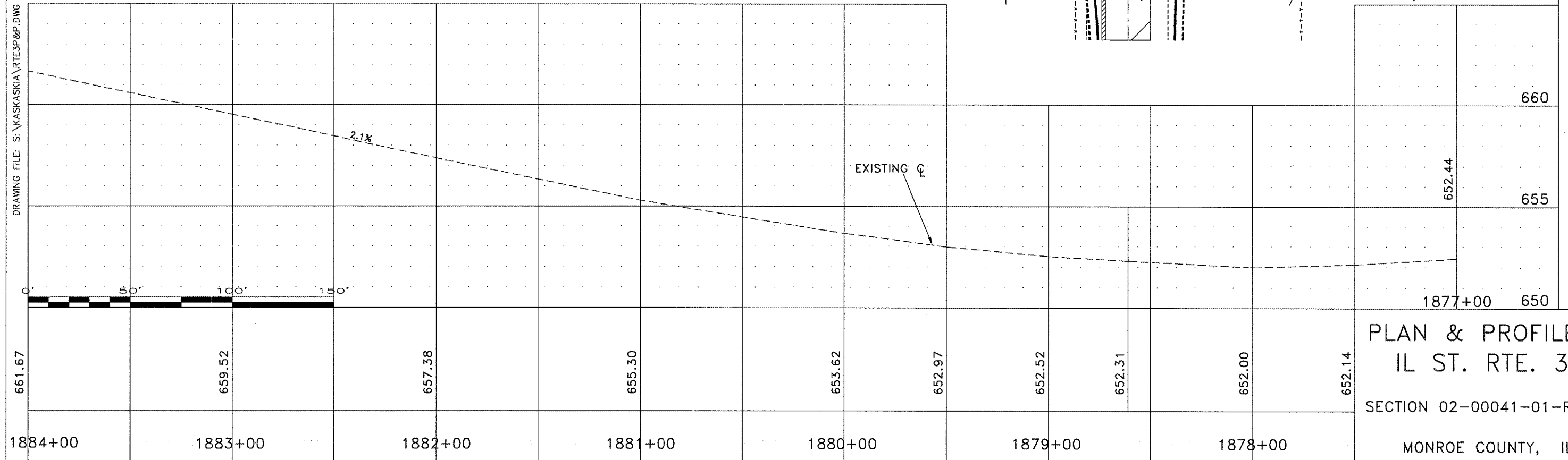
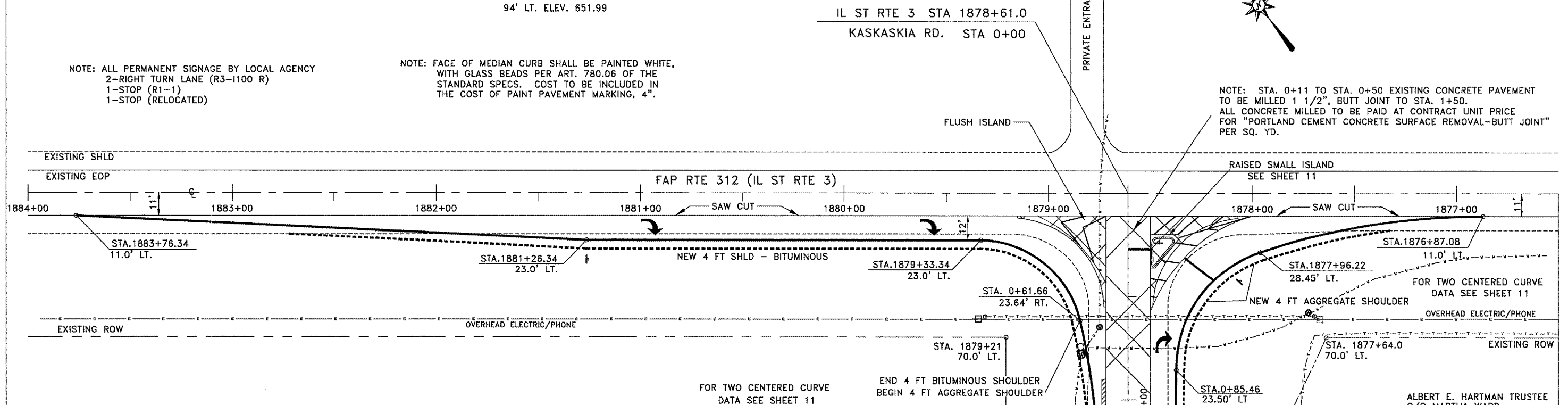
NOTE: CONTRACTOR TO SAW CUT THE LENGTH OF RTE. 3.
APPROX. 690 FT. COST INCLUDED IN UNIT PRICE FOR
BITUMINOUS SHOULDER REMOVAL.

LOCAL BENCHMARK: RR SPIKE IN POWER POLE STA. 0+61
94' LT. ELEV. 651.99

NOTE: ALL PERMANENT SIGNAGE BY LOCAL AGENCY
2-RIGHT TURN LANE (R3-1100 R)
1-STOP (R1-1)
1-STOP (RELOCATED)

NOTE: FACE OF MEDIAN CURB SHALL BE PAINTED WHITE,
WITH GLASS BEADS PER ART. 780.06 OF THE
STANDARD SPECS. COST TO BE INCLUDED IN
THE COST OF PAINT PAVEMENT MARKING, 4".

NOTE: STA. 0+11 TO STA. 0+50 EXISTING CONCRETE PAVEMENT
TO BE MILLED 1 1/2", BUTT JOINT TO STA. 1+50.
ALL CONCRETE MILLED TO BE PAID AT CONTRACT UNIT PRICE
FOR "PORTLAND CEMENT CONCRETE SURFACE REMOVAL-BUTT JOINT"
PER SQ. YD.



ALBERT E. HARTMAN TRUSTEE
C/O MARTHA WARD

1877+00 650

PLAN & PROFILE
IL ST. RTE. 3
SECTION 02-00041-01-RS
MONROE COUNTY, IL

DRAWING FILE: S:\KASKASKIA\RT3P&P.DWG